

4550 Kearny Villa Rd

San Diego CA 92123

FOR SALE

DANIEL FEFFERMAN
BROKER, FOUNDER
DRE 02026109
(619) 733-9038

DANIEL@DEFINESDRE.COM
WWW.DEFINE-SANDIEGO.COM



LANDMARK CENTRE

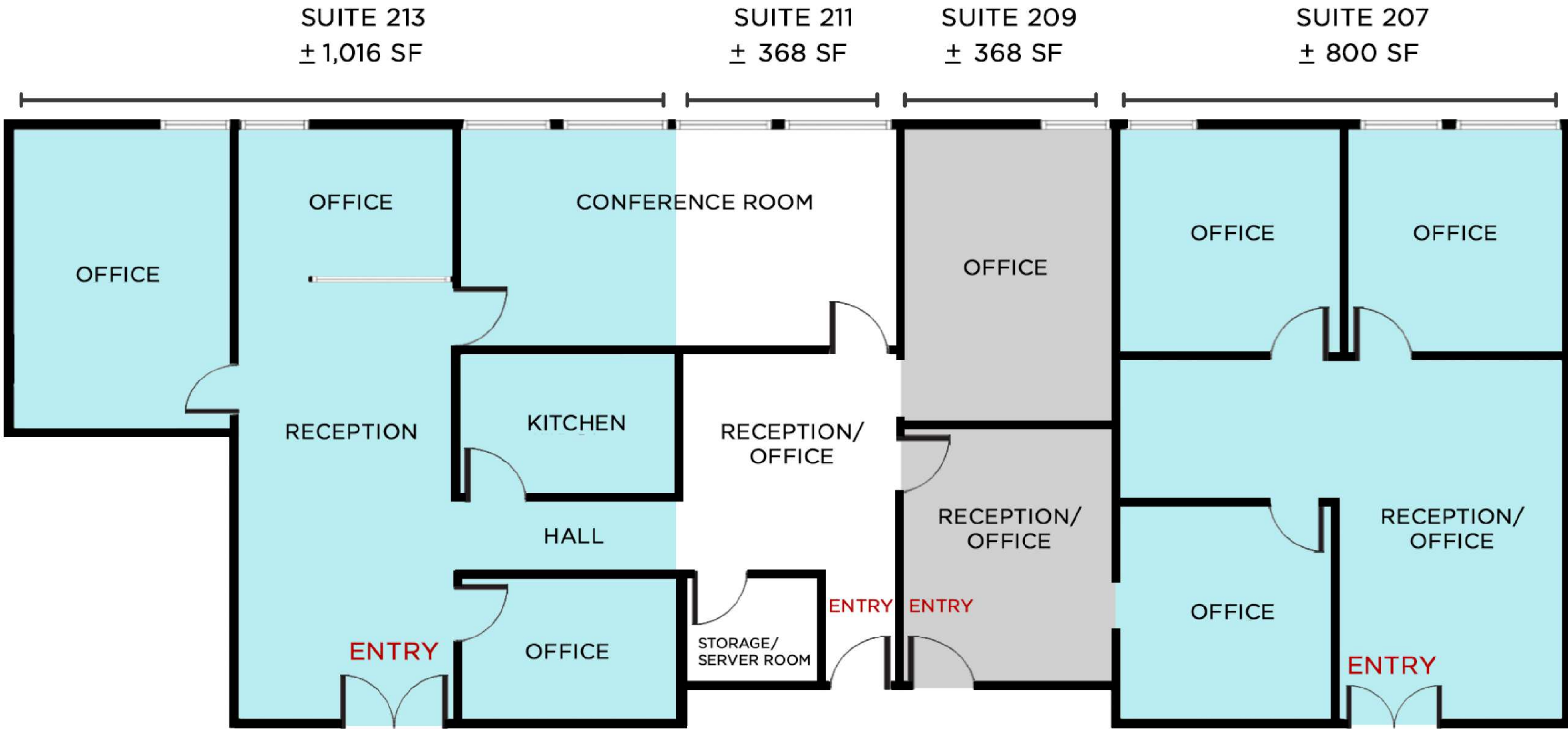
Offered for sale is this 2,552 sq ft office condo in the heart of growing Kearny Mesa. Featuring 4 distinct units, this opportunity caters to owner-users, savvy investors, or a blend of both; perfect for those seeking to establish or expand their business footprint. Versatile layout offers flexibility for customization or lease opportunities and the ability to utilize SBA financing. Ideal location with growth potential. Landmark Centre features two buildings totaling approximately 32,000 on just over 2 acres with ample parking.

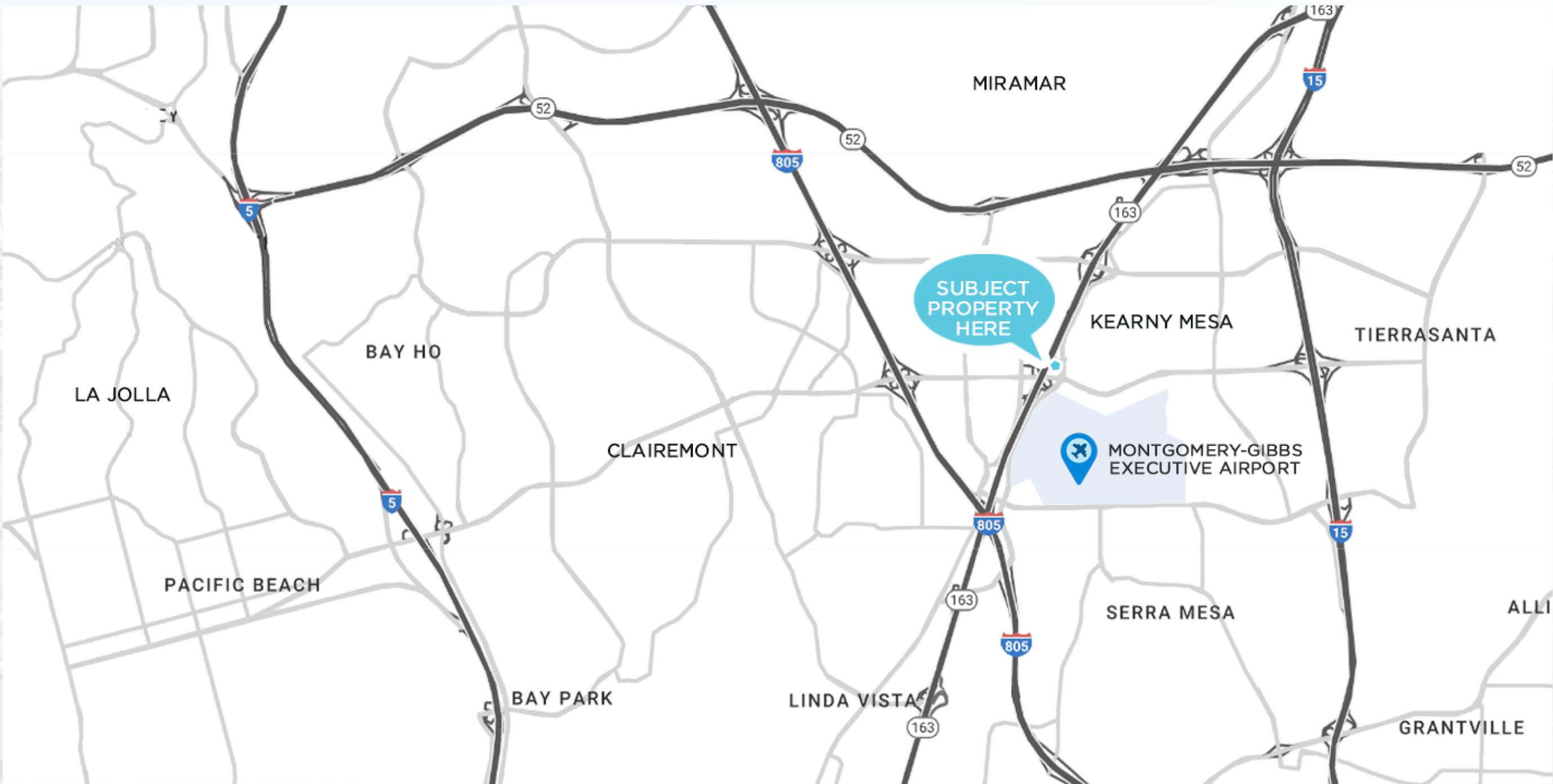




PROPERTY HIGHLIGHTS

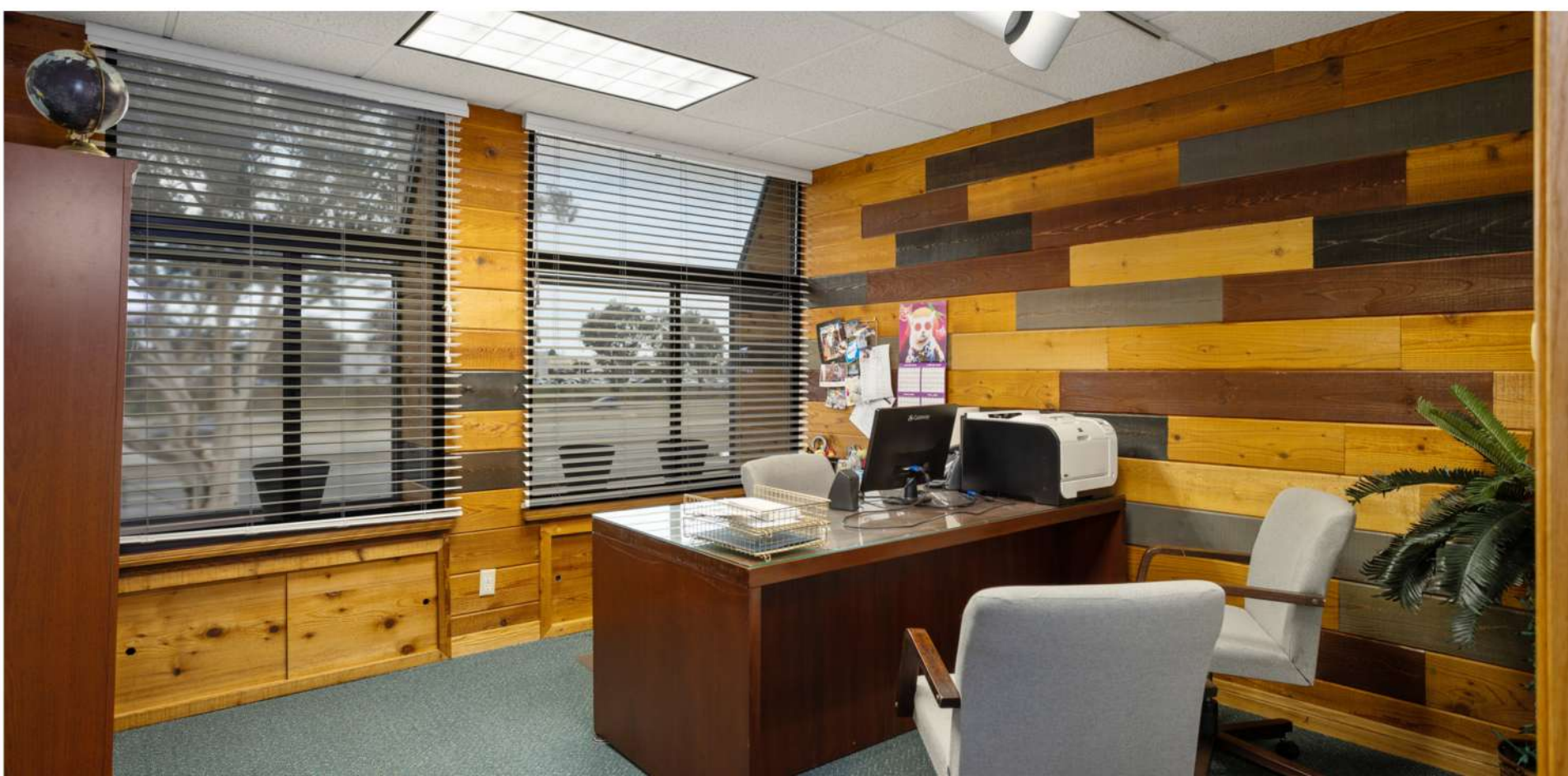
- ▶ Approximately 2,552 SF
- ▶ Units include: 207, 209, 211, 213
- ▶ Updated common areas including restrooms
- ▶ Second floor units
- ▶ Available fully furnished
- ▶ Upgraded HVAC
- ▶ Signage options
- ▶ Zoning allows for offices and medical uses
- ▶ Central location in Kearny Mesa close to retail shopping, restaurants and other amenities
- ▶ Quick access to Highways 163, 15 & 805 freeways













Contact

DANIEL FEFFERMAN
Broker, Founder



DEFINE
REAL ESTATE



Address

4950 Waring Rd STE 5, San Diego, CA 92120



Phone Number

(619) 733-9038



Email

Daniel@DefineSDRE@gmail.com



Website

www.Define-SanDiego.com



License

DRE 02026109

