



OFFICE/FLEX SPACE | **FOR SALE**

364 CROMPTON STREET | CHARLOTTE

Rare flex condo available in close proximity to I-77 and I-485, right off the heavily trafficked Westinghouse Blvd.

EVAN HODGES
c 704 572 0145
ehodges@mecacommercial.com





PROPERTY INFORMATION

SF

3,780 SF*

FEATURES

- Two-story flex condo unit
- Dock high loading in door in rear
- Private offices and conference room on both floors
- Bathrooms and kitchenette area on both floors
- Floorplan allows for single or multi-tenant occupancy
- Tenant in place until end of August

LIST PRICE

\$534,900



EVAN HODGES

c 704 572 0145

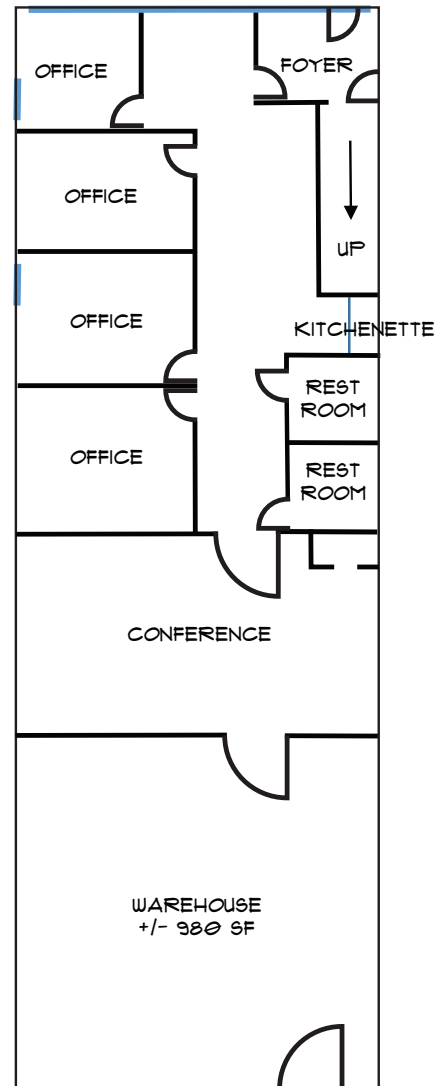
ehodges@mecacommercial.com

MECA Commercial Real Estate
2216 Monument Street
Charlotte, NC 28208
704 971 2000

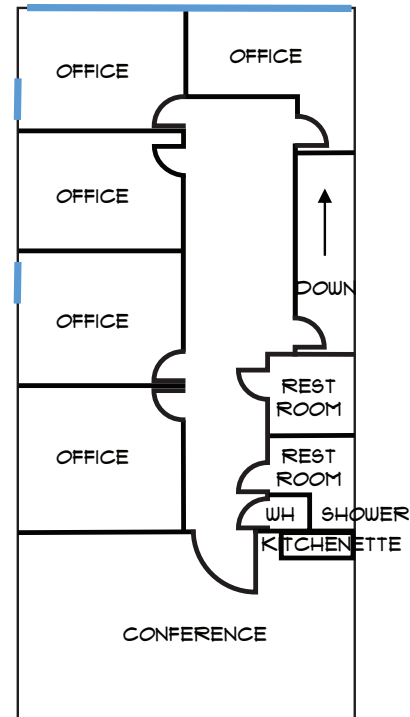


MECA
COMMERCIAL REAL ESTATE

FIRST FLOOR
2,380± SF



SECOND FLOOR
1,400 SF



EVAN HODGES

c 704 572 0145

ehodges@mecacommercial.com

MECA Commercial Real Estate

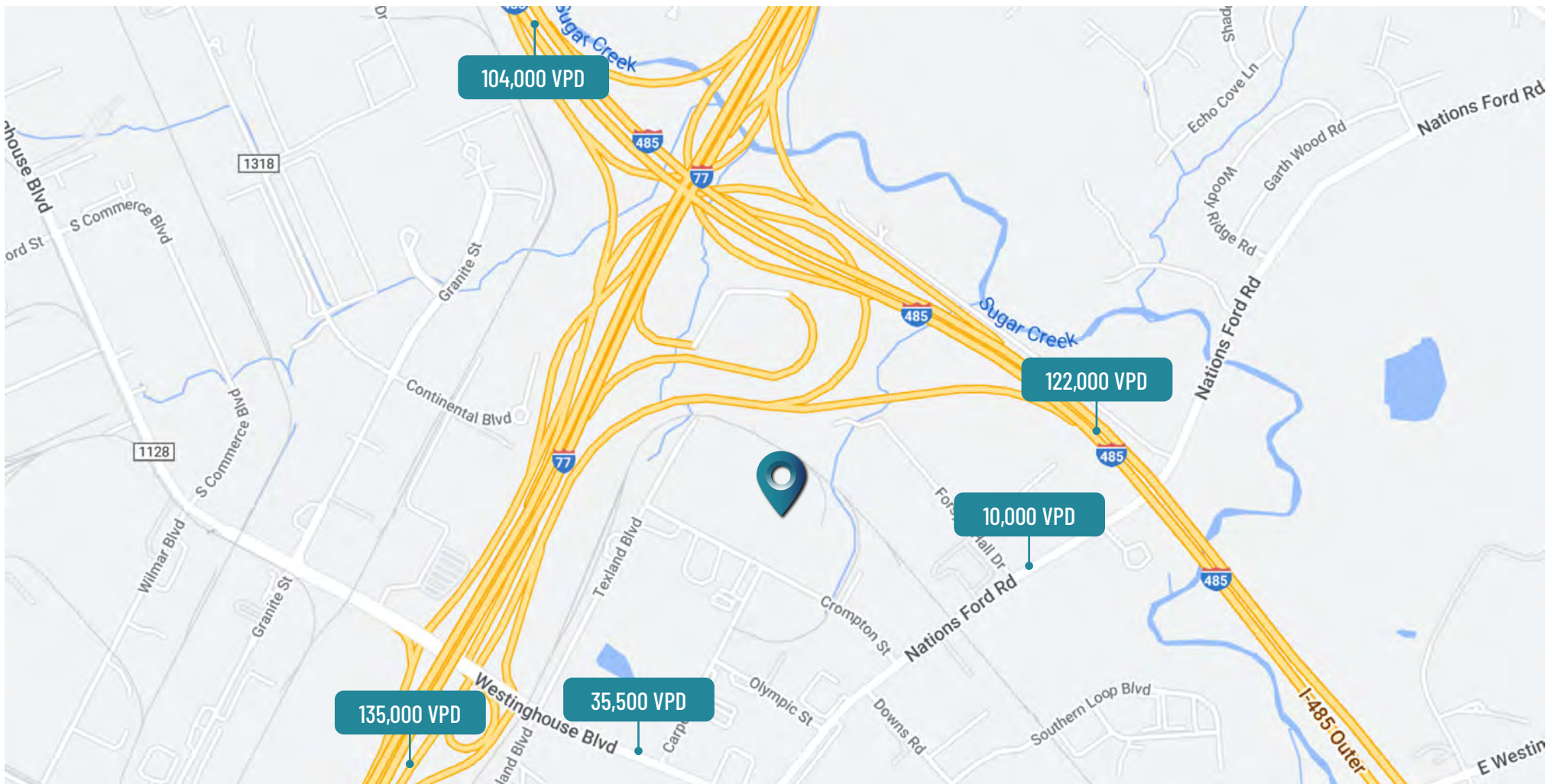
2216 Monument Street

Charlotte, NC 28208

704 971 2000



MECA
COMMERCIAL REAL ESTATE



EVAN HODGES

c 704 572 0145

ehodges@mecacommercial.com

MECA Commercial Real Estate

2216 Monument Street

Charlotte, NC 28208

704 971 2000



MECA
COMMERCIAL REAL ESTATE

mecacommercial.com

© 2024 Metro Realty, LLC. All rights reserved. Metro Realty, LLC fully supports the principles of the Fair Housing Act and the Equal Opportunity Act.

*The land acreage and/or building square footage was obtained from the County's Geographical Information System or other electronic resources. For exact square footage and/or acreage, we recommend that prior to purchase, a prospective Buyer/Tenant obtain a boundary survey or have the building measured professionally.