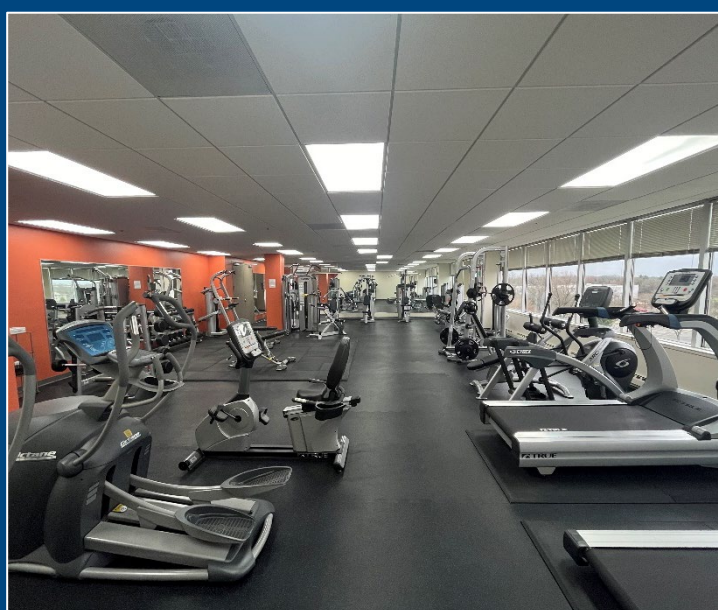
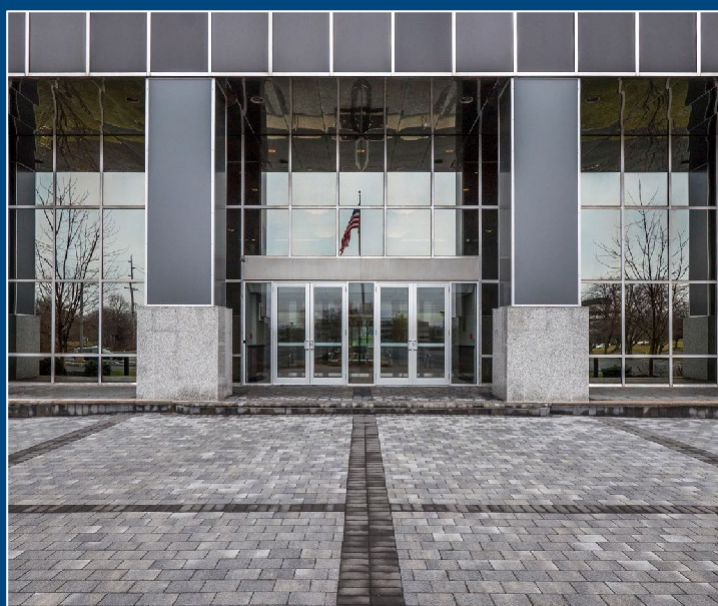


TOWER 270



270 Davidson Avenue

PROPERTY FEATURES

- › New fitness center, conference center, and café
- › Newly renovated lobby and common areas
- › Capital projects completed: New roof, parking lot, fire alarm system, new front and rear entrance, and elevators
- › On-site property management
- › Executive covered parking
- › 4-way interchange on route 287 at Exit 10,
- › Route 18, 22 and 27 nearby
- › Convenient to restaurants, hotels (Double Tree, Courtyard by Marriott & Holiday Inn
- › Parking: 713 free surface spaces are available, 58 free covered spaces, ratio 4.00/1,000 SF

BUILDING FEATURES

Total Square Feet: 229,306 SF – Eight Stories

Premises:	Entire 2nd Floor:	27,343 SF
	Partial 3rd Floor:	12,079 SF Divisible
	Entire 4th Floor:	30,997 SF
	Partial 5th Floor:	4,608 SF
	Partial 6th Floor:	3,721 SF
	Partial 7th Floor:	14,972 SF Divisible

CONTACT US

MICHAEL TESSER
Real Estate Salesperson
+1 973 299 3004
michael.tesser@colliers.com

COLLIERS INTERNATIONAL NJ LLC
20 Waterview Boulevard
Suite 310
Parsippany, NJ 07054
www.colliers.com

Colliers

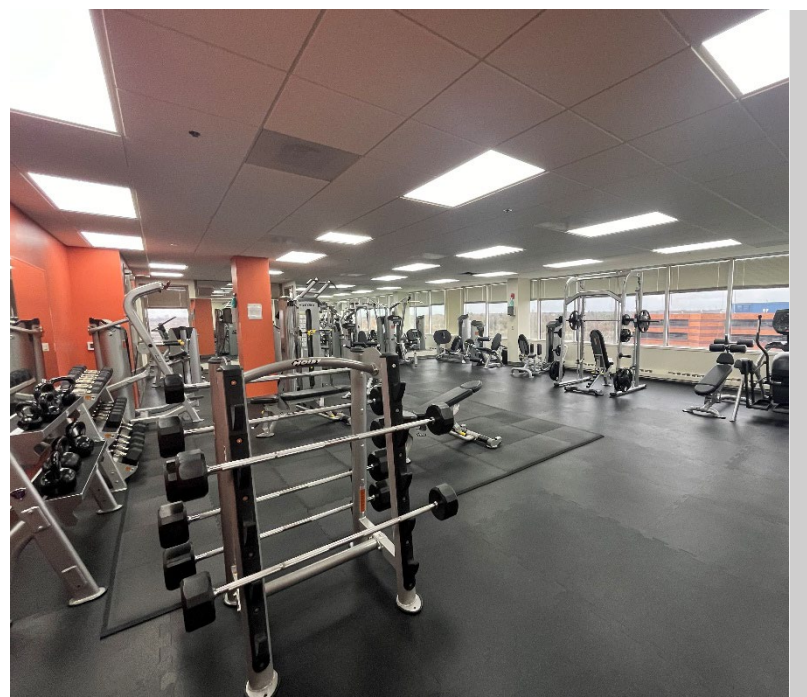
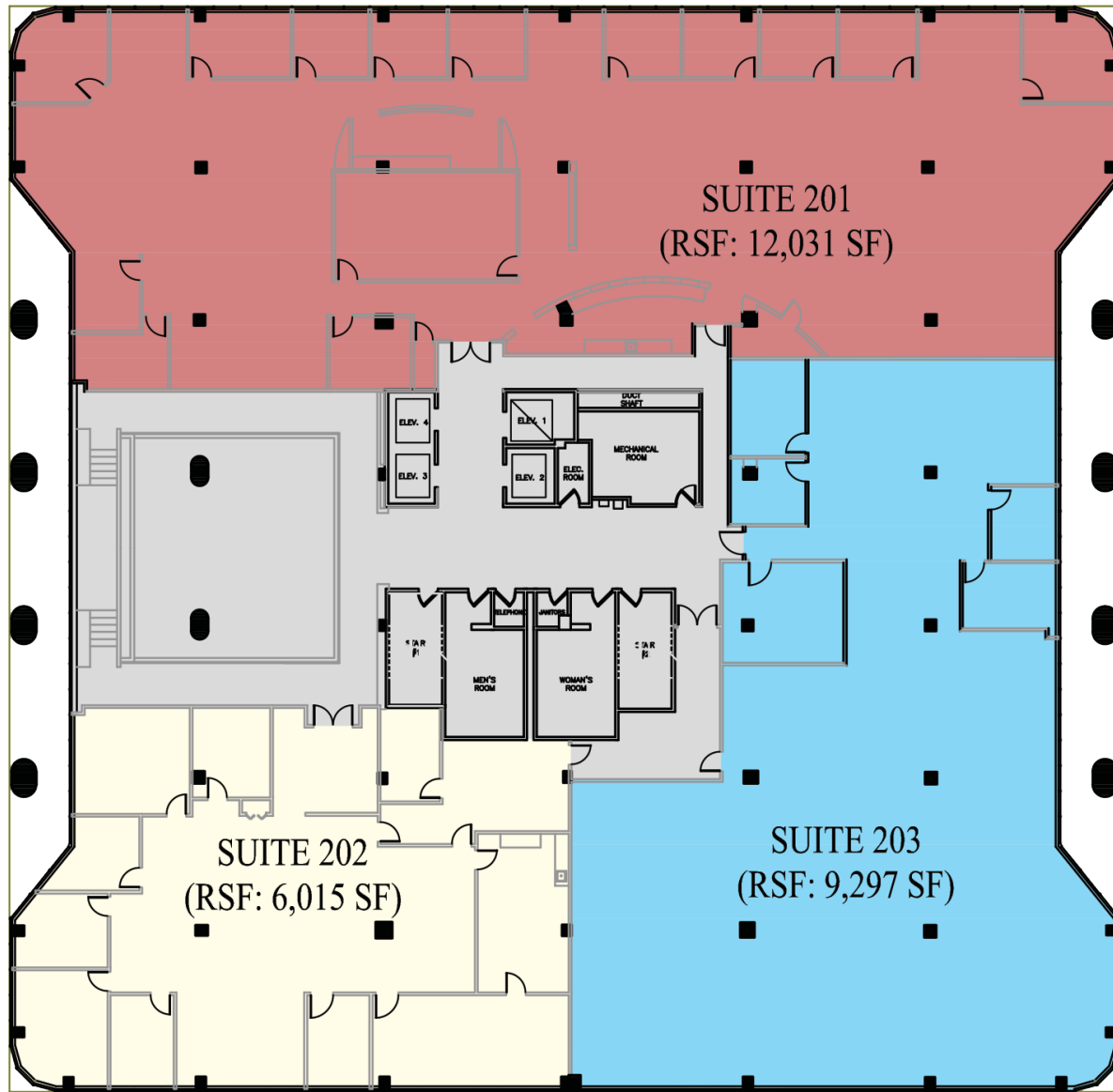


TOWER 270

Colliers

270 Davidson Avenue, Somerset, NJ

2ND FLOOR – 27,343 RSF AVAILABLE



CONTACT US

MICHAEL TESSER

Real Estate Salesperson

+1 973 299 3004

michael.tesser@colliers.com

COLLIERS INTERNATIONAL NJ LLC

20 Waterview Boulevard

Suite 310

Parsippany, NJ 07054

www.colliers.com

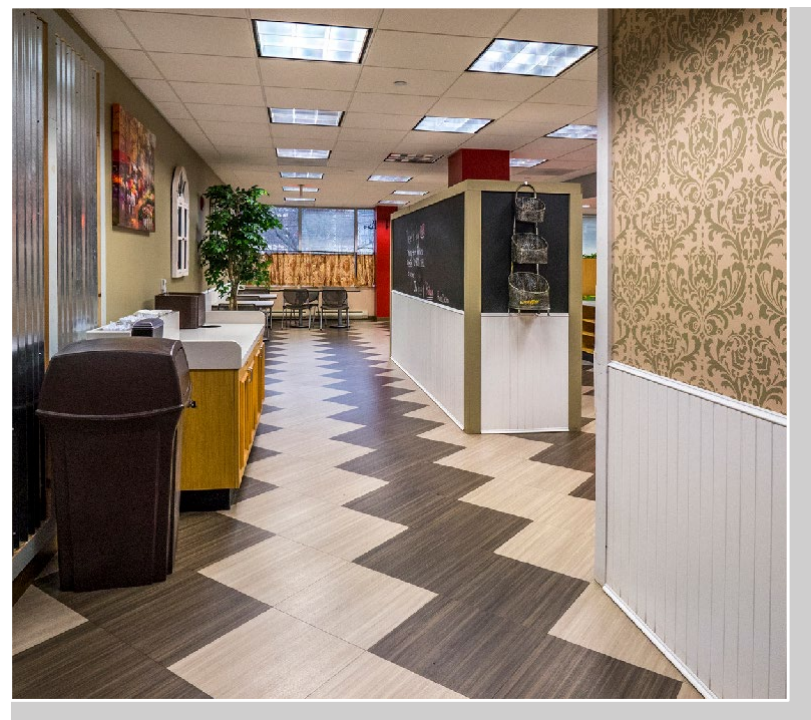


TOWER 270

Colliers

270 Davidson Avenue, Somerset, NJ

3RD FLOOR – 12,079 RSF AVAILABLE



CONTACT US

MICHAEL TESSER

Real Estate Salesperson

+1 973 299 3004

michael.tesser@colliers.com

COLLIERS INTERNATIONAL NJ LLC

20 Waterview Boulevard

Suite 310

Parsippany, NJ 07054

www.colliers.com

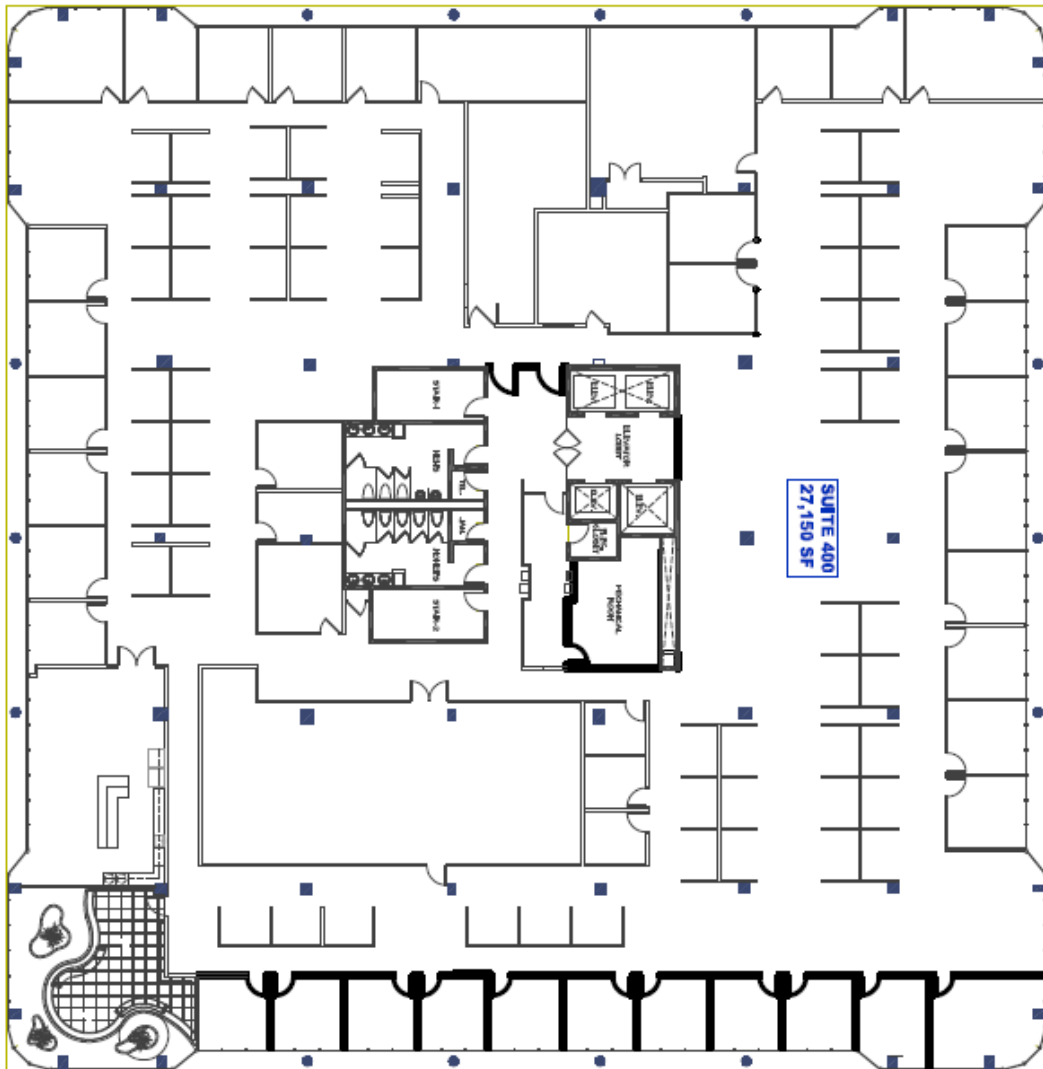


TOWER 270

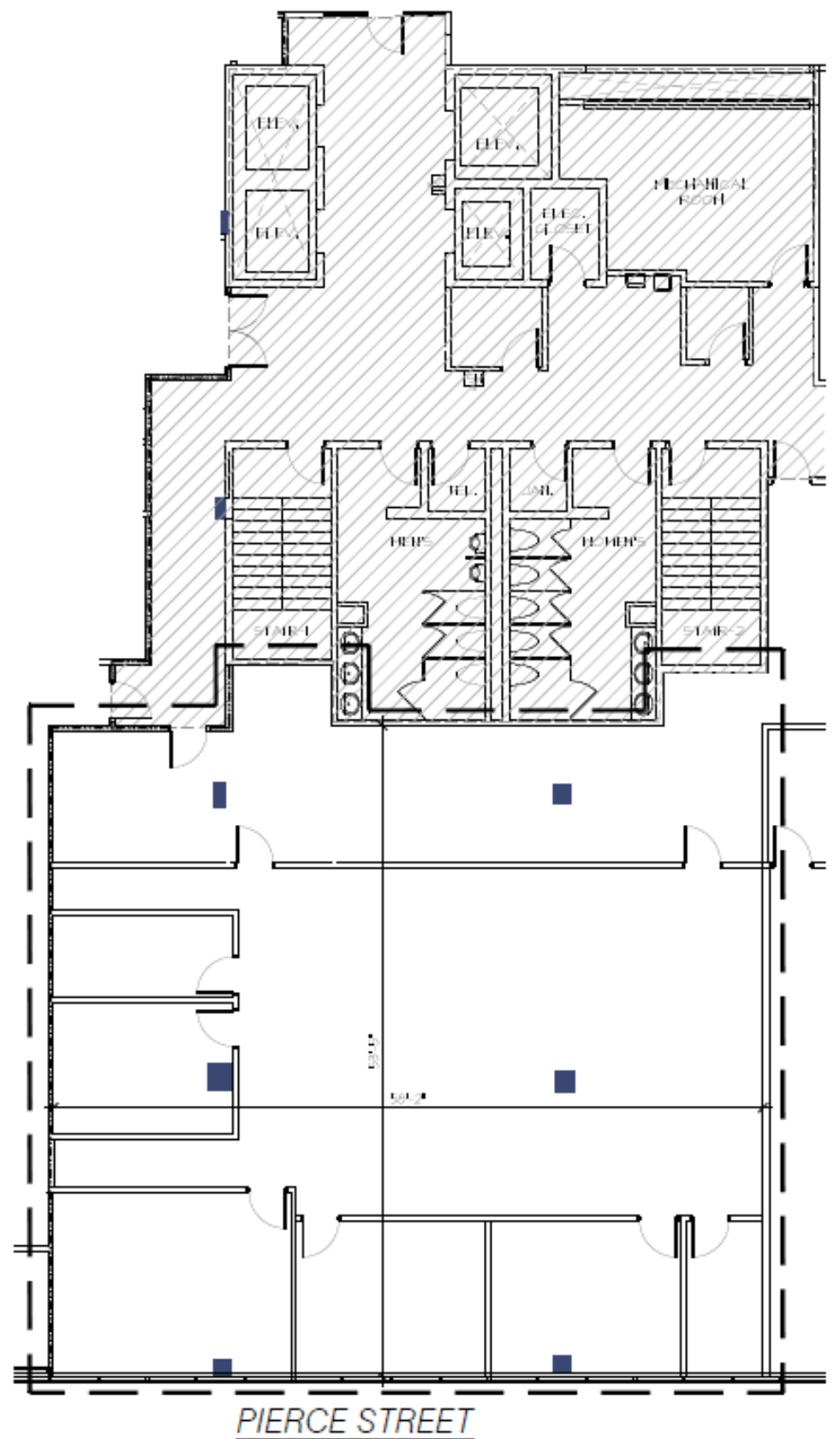
Colliers

270 Davidson Avenue, Somerset, NJ

4TH FLOOR – 30,997 RSF AVAILABLE



6TH FLOOR – 3,721 RSF AVAILABLE



5TH FLOOR – 4,608 RSF AVAILABLE



CONTACT US

MICHAEL TESSER

Real Estate Salesperson

+1 973 299 3004

michael.tesser@colliers.com

COLLIERS INTERNATIONAL NJ LLC

20 Waterview Boulevard

Suite 310

Parsippany, NJ 07054

www.colliers.com

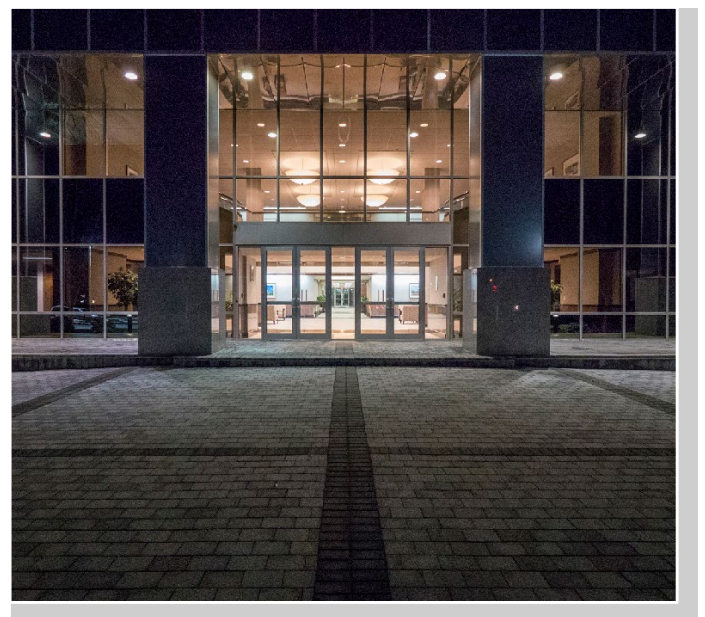
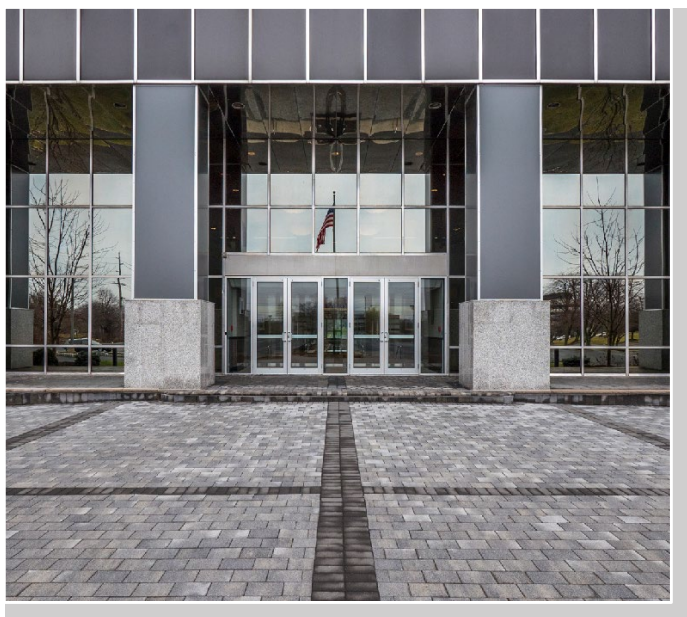


TOWER 270

Colliers

270 Davidson Avenue, Somerset, NJ

7TH FLOOR – 14,972 RSF AVAILABLE (DIVISIBLE)



CONTACT US

MICHAEL TESSER

Real Estate Salesperson

+1 973 299 3004

michael.tesser@colliers.com

COLLIERS INTERNATIONAL NJ LLC

20 Waterview Boulevard

Suite 310

Parsippany, NJ 07054

www.colliers.com