

Multi-Tenant Industrial Building for Sale

10323-10327 FLANDERS STREET NE | BLAINE, MN

11,026 Sq. Ft. Building

I-1 Light Industrial Zoning

Central Blaine Location



Cetra Partners

4455 White Bear Parkway, Suite 600
White Bear Lake, MN 55110

Dan Friedner | Principal
M: 612-599-7864
E: dan@cetrapartners.com

Jay Chmielecki | Principal
M: 612-275-3772
E: jay@cetrapartners.com

Patrick Cullen | Principal
M: 651-308-4271
E: patrick@cetrapartners.com

Property Overview

LOCATION

10323-10327 Flanders Street NE | Blaine, MN

ANOKA COUNTY PID

22-31-23-42-0004

BUILDING SIZE

Approx. 4,160 Sq. Ft. - Office

Approx. 6,866 Sq. Ft. - Warehouse

Approx. 11,026 Sq. Ft. - Total

LOT SIZE

1.14 Acres

YEAR BUILT

2000

LOADING

Four (4) Drive-In Doors

One (1) Dock Door

ZONING

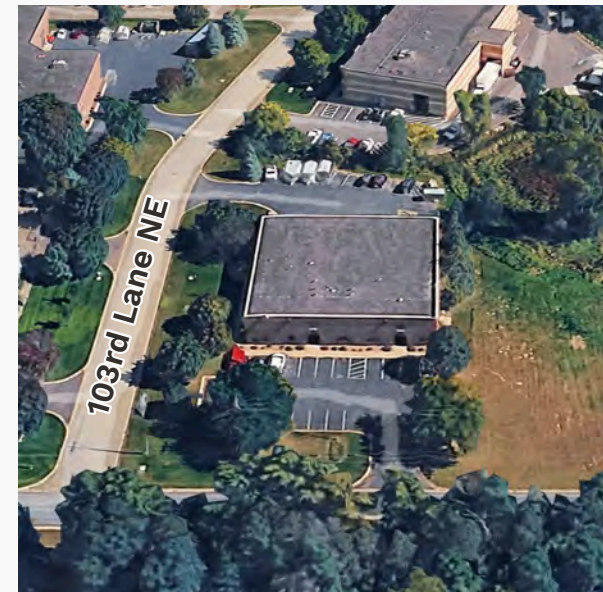
I-1 Light Industrial

2025 EST. RE TAXES

\$48,313.28

SALE PRICE

\$1,475,000 or \$133.77 Per Sq. Ft.

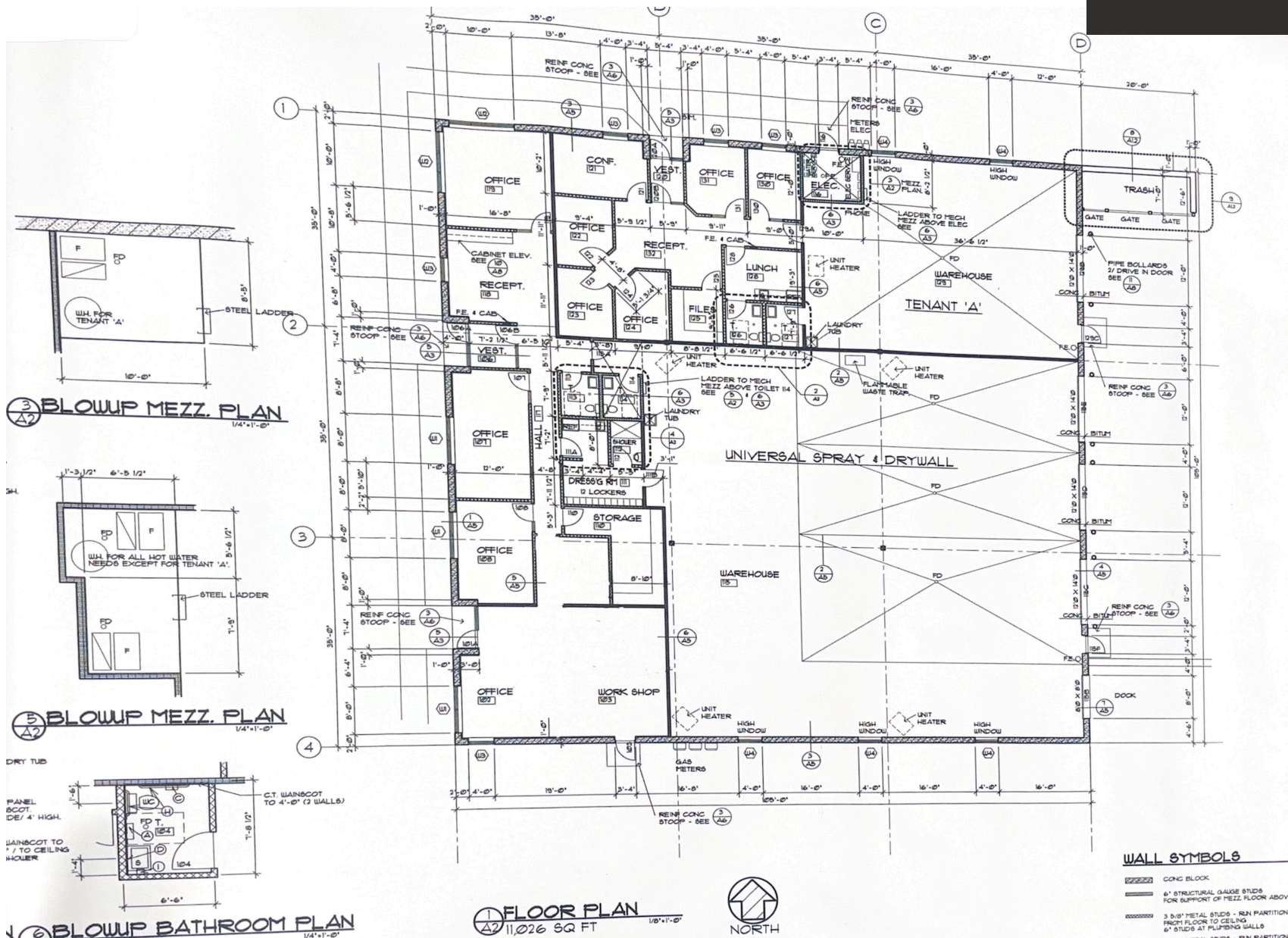


Multi-Tenant Building: Demised and separately metered into a 3,000 Sq. Ft. space and a 8,026 Sq. Ft. space.

Multi-Tenant Industrial Building for Sale

10323-10327 FLANDERS STREET NE | BLAINE, MN

Floor Plan -
11,026 Sq. Ft. Building



Multi-Tenant Industrial Building for Sale

10323-10327 FLANDERS STREET NE | BLAINE, MN

Street Map View -
11,026 SF Available



Multi-Tenant Industrial Building for Sale

10323-10327 FLANDERS STREET NE | BLAINE, MN

Aerial Map View -
11,026 SF Available

