



8255 W Sunset Blvd

WEST HOLLYWOOD, CA

CBRE

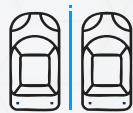
SPACE HIGHLIGHTS



SQ.FT.
10,000 SF



RATE
\$5.50 MG



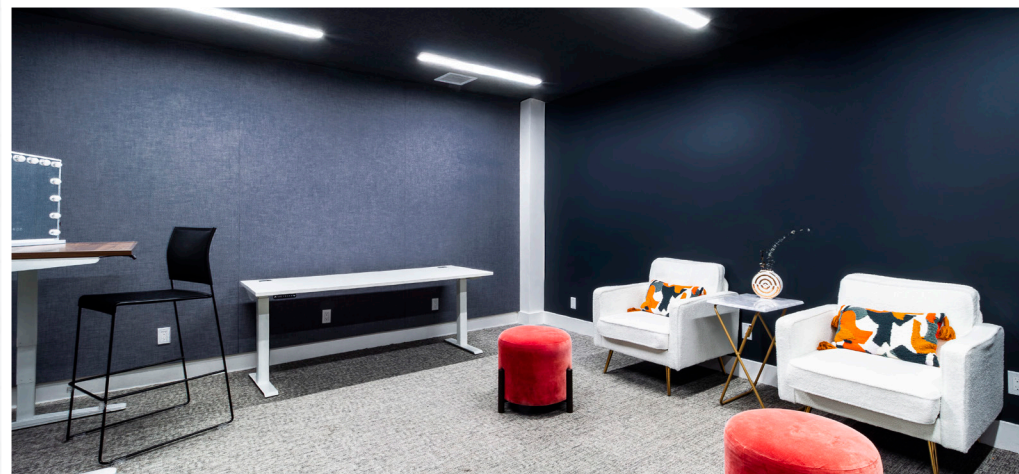
PARKING
Ten (10) parking stalls
behind the building at
\$250 / stall



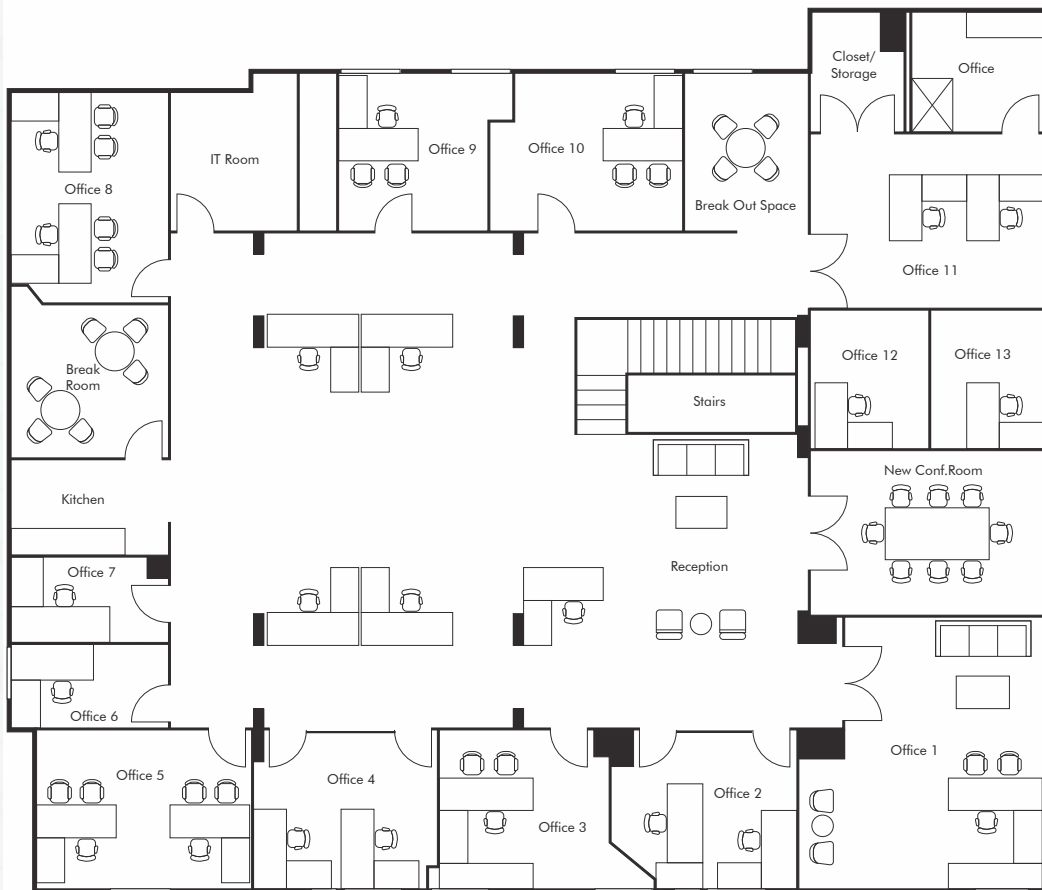
8255

W SUNSET BLVD

GROUND FLOOR



8255
W SUNSET BLVD
SECOND FLOOR



8255 West Sunset Blvd
WEST HOLLYWOOD, CA

BLAKE FOL

+1 310 550 2683
blake.fol@cbre.com
Lic. 02013968

DAVID FREITAG

+1 310 550 2690
david.freitag@cbre.com
Lic. 01908952

ROCKY BINSWANGER

+1 213 613 3056
rocky.binswanger@cbre.com
Lic. 01807626

KAYLA RIX

+1 310 228 2113
kayla.rix@cbre.com
Lic. 02193097

CBRE