

# 1663

## Mission Street

San Francisco CA 94103

TCN  
WORLDWIDE  
REAL ESTATE SERVICES

# For Lease

**Craig Hansson**  
craig@starboardcre.com  
415.710.7768

**Hans Hansson**  
hans@starboardcre.com  
415.517.2589



**STARBOARD CRE**  
LOCAL • INDEPENDENT • ENTREPRENEURIAL

# BUILDING SUMMARY

**Address:** 1663 Mission Street

**Property Type:** Creative Office

**Lease Type:** Industrial Gross

**Term:** 3 to 5 years

**Rate:** Ask Agent

## 1663 Mission St.

1

**Suite 603**  
±2,970 SF  
6th Floor

2

**Suite 504**  
±1,280 SF  
5th Floor

3

**Plum street mezzanine**  
±2,500 SF



# Highlights



## Location & Accessibility

Near SoMa, easy 101 access, close to amenities.



## Parking

Opposite a well-lit parking facility.



## View

Excellent window line on both sides.



## Transportation

Immediate access to all forms of transportation.



## Office Layout

High ceilings, natural light, mixed spaces.



## Building Features

Updated lobby, modern elevators, renovated spaces.



## Security

Security guard on site for enhanced safety.



# Suite 603

---

- **Suite:** 603
- **Rentable SF:** ± 2,970 SF
- **Lease Type:** Industrial Gross
- **Term:** 3 to 5 years

## Highlights

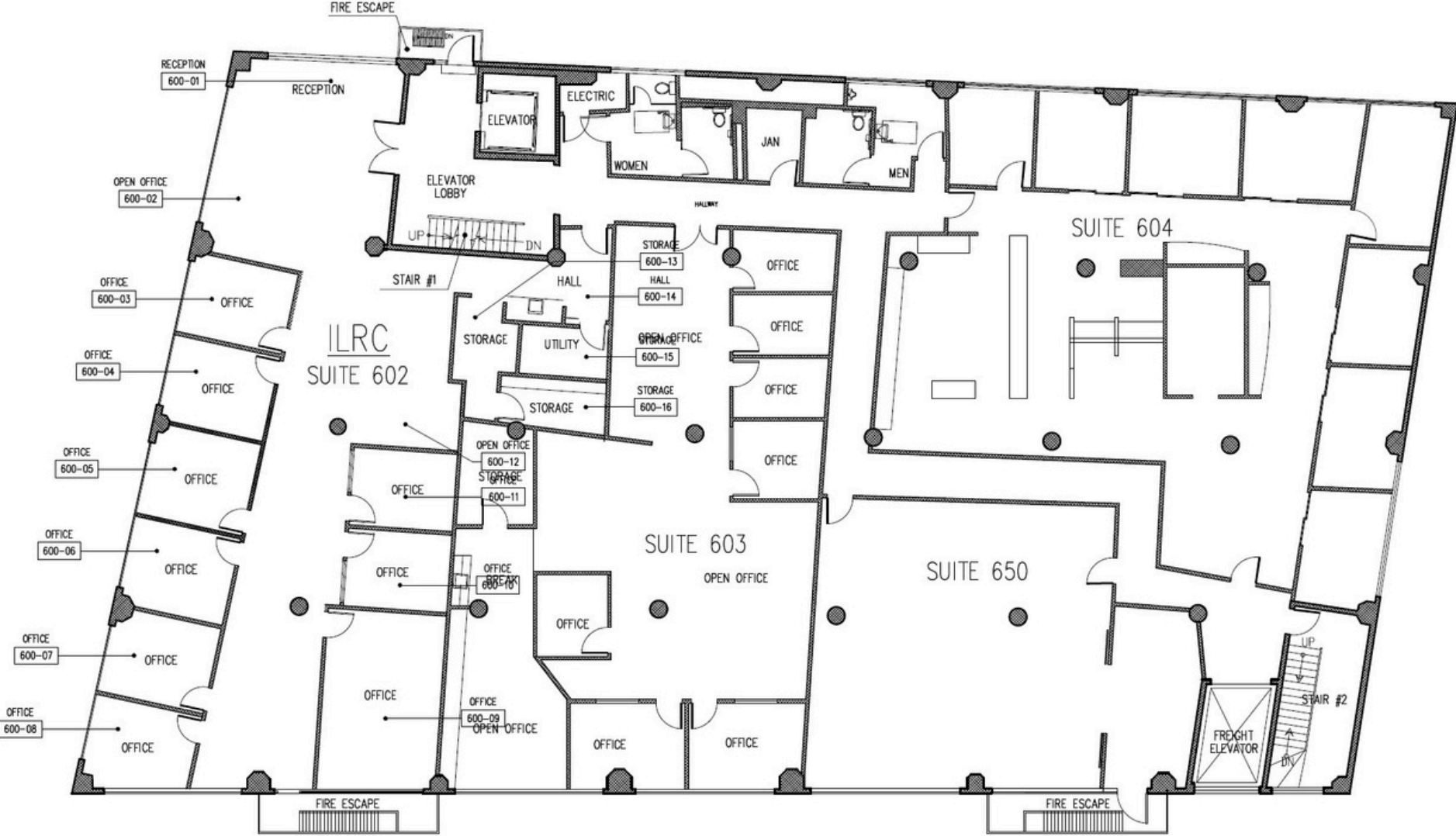
- 4 Private Offices
- Open Area
- Kitchen



# Suite 603 | Images



# 6th Floor | Floor Plan



# Suite 504

---

- **Suite: 504**
- **Rentable SF:** ± 1,280 SF
- **Lease Type:** Industrial Gross
- **Term:** 3 to 5 years

## Highlights

- Two large offices
- One conference room
- Storage room
- Rest open plan
- Excellent Views



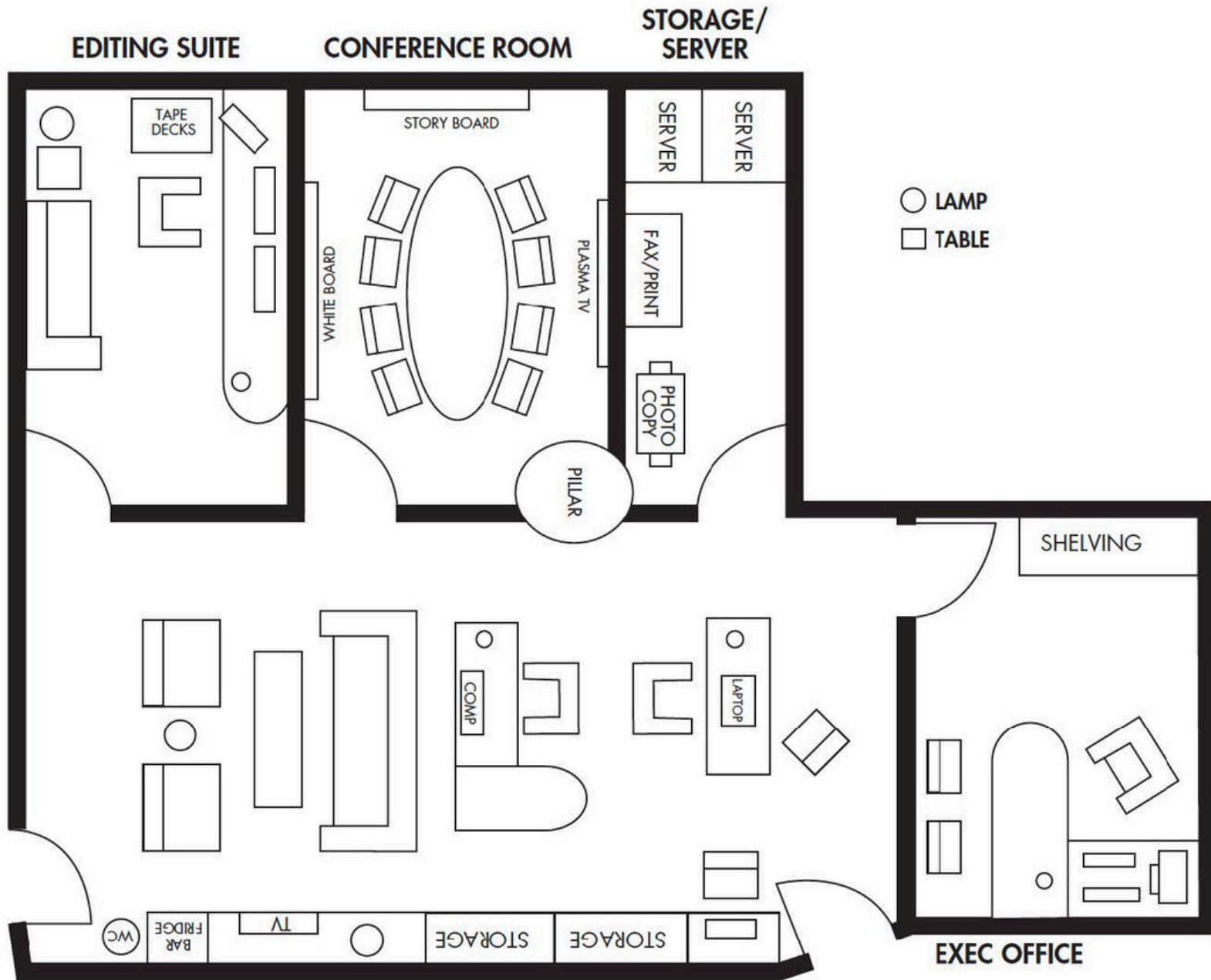
Images enhanced with AI

# Suite 504 | Images

---



# Suite 504 | Floor Plan



# Plum street mezzanine

---

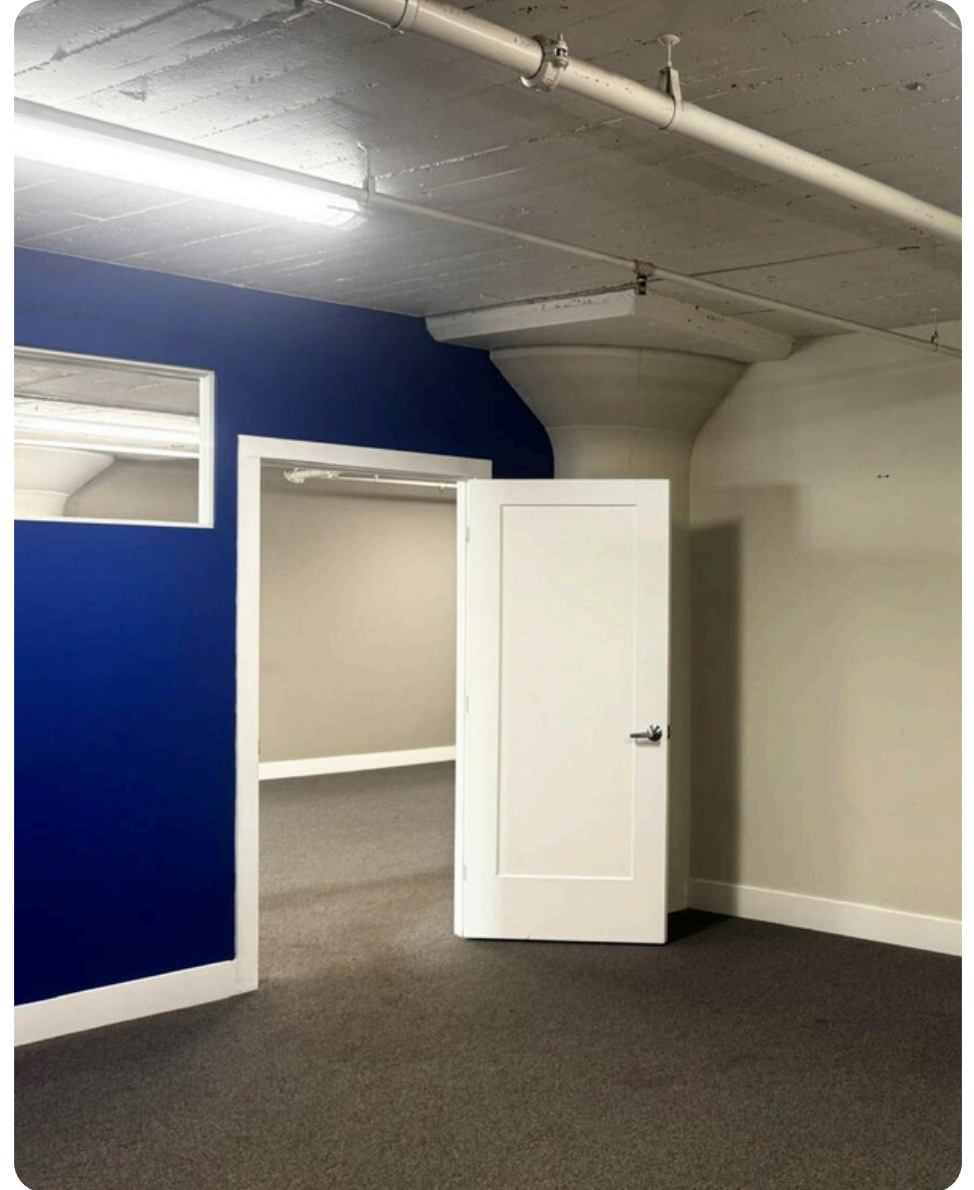
- **Suite:** Plum street mezzanine
- **Rentable SF:** ± 2,500 SF
- **Price:** From \$30 sf/yr

## Highlights

- Full floor
- Elevator access



# Plum street mezzanine | Images



# Team

---



## Craig Hansson

Vice President  
craig@starboardcre.com  
CELL: 415.710.7768  
CA DRE #01841643

Call

View Profile



## Hans Hansson

President / Broker of Record  
hans@starboardcre.com  
CELL: 415.517.2589  
CA DRE # 00872902

Call

View Profile





**STARBOARD CRE**  
LOCAL • INDEPENDENT • ENTREPRENEURIAL

STARBOARDCRE.COM  
OFC. PHONE 415.765.6900  
49 POWELL STREET, SAN FRANCISCO, CA 94102



## Unique Vision

We see what others miss

## Local Market Leader

No one knows Northern  
California like we do

## Full-Service Firm

We do it all

Locally based, and technology-forward, our brokers are highly qualified experts backed by a full-service, in-house support team who understand the intricacies of San Francisco real estate. Starboard CRE brings decades of brokerage experience representing over 600 million square feet of space with an aggregate lease value of over 10 billion and investments sold over 3 billion.

**CA DRE# 01103056**

