



# 5+ ACRES • HUNTSVILLE BROWNSFERRY RD

MADISON, ALABAMA

## SALE

5+ acres  
Huntsville Brownsferry Road  
Madison, AL 35756

## COMMENTS

- Located in Limestone County
- All utilities available at site
- No zoning restrictions (county)
- Convenient to I-65, I-565 & Hwy 72; I-65 provides direct access to Brownsferry Road via Exit 347
- Divisible into half acre lots
- Situated at the NW intersection of Gray Rd & Huntsville Brownsferry Rd, just east of Mooresville Rd
- Lots are part of Brentwood Village subdivision

## PRICING

\$85,000 per half acre lot

## EXCLUSIVE AGENTS

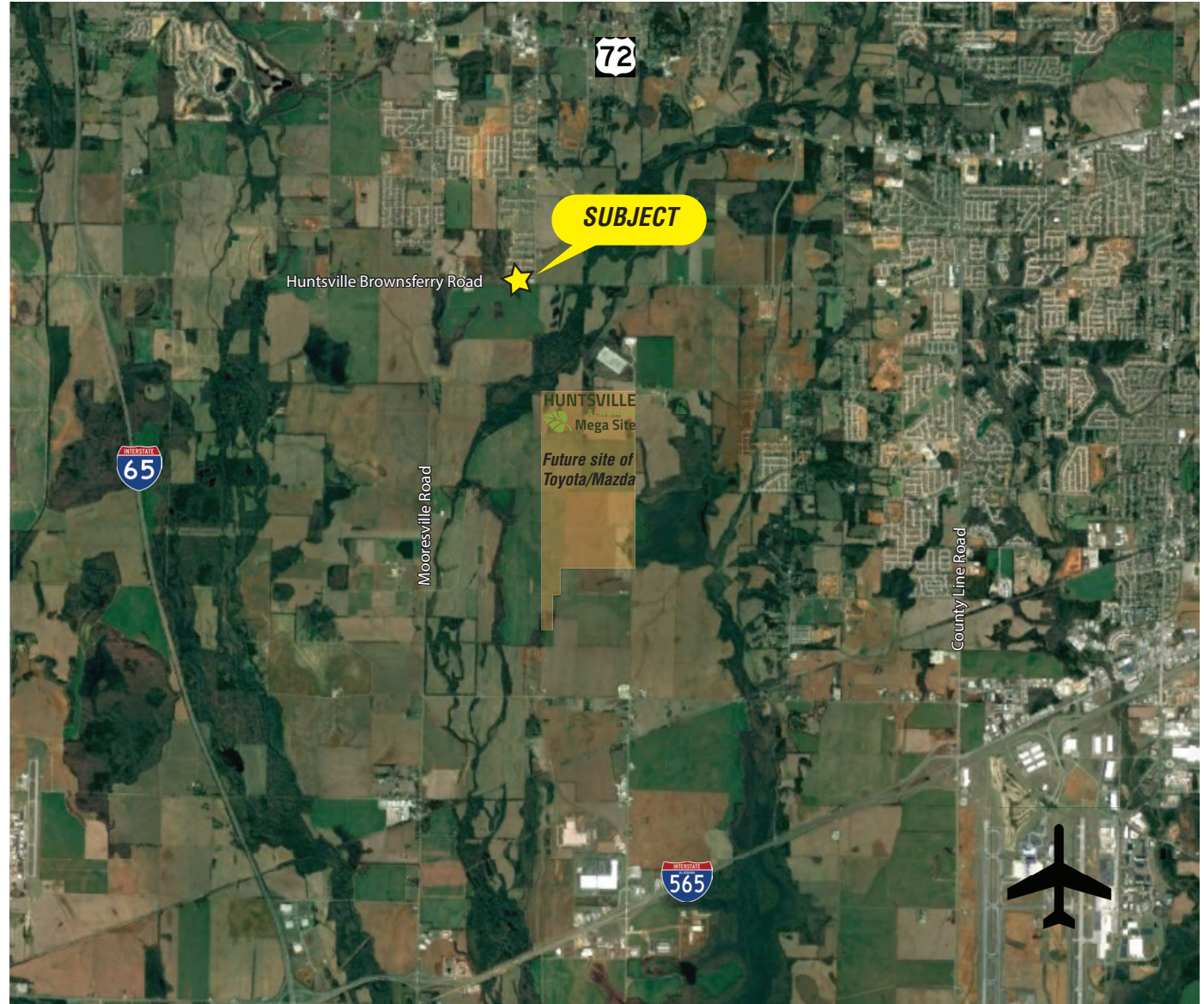
*Bart Smith, CCIM, SIOR*

[barts@grahamcompany.com](mailto:barts@grahamcompany.com)

*Tyler Fanning*

[tylerf@grahamcompany.com](mailto:tylerf@grahamcompany.com)

256.382.9010



1500 Perimeter Parkway  
Suite 150  
Huntsville, AL 35806

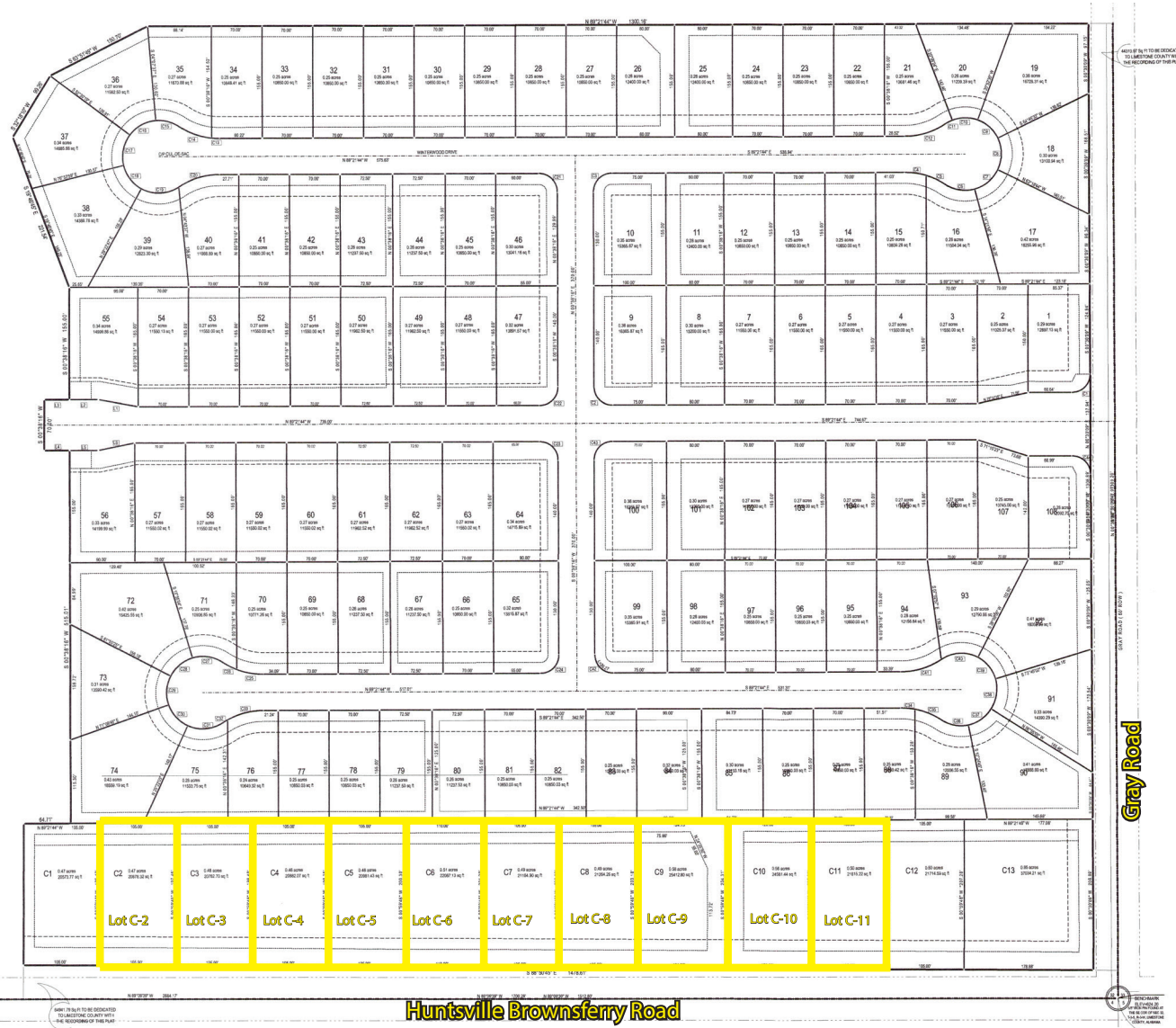
TEL 256.382.9010  
FAX 256.382.9011  
[grahamcompany.com](http://grahamcompany.com)

Information deemed reliable, but not guaranteed.



# 5+ ACRES • HUNTSVILLE BROWNSFERRY RD

## MADISON, ALABAMA



1500 Perimeter Parkway  
Suite 150  
Huntsville, AL 35806

TEL 256.382.9010  
FAX 256.382.9011  
grahamcompany.com

Information deemed reliable, but not guaranteed.