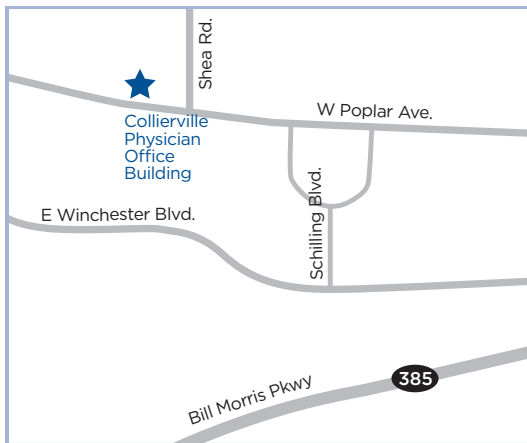




Where
I can build my office the
way I want it.



Collierville Physician Office Building

1458 West Poplar Avenue

- Class A medical office building
- On the campus of Baptist Memorial Hospital - Collierville
- 58,000 square feet built in 2004
- Generous tenant improvement allowance to design and build your own clinical space
- Abundant surface parking
- 10,500 square feet of contiguous space available
- Quiet and serene office park
- Located on Poplar Avenue with easy access and high visibility



Carma C. Jude

901.747.0300

cjude@healthcarerealty.com

Liza Wohrman

901.747.0300

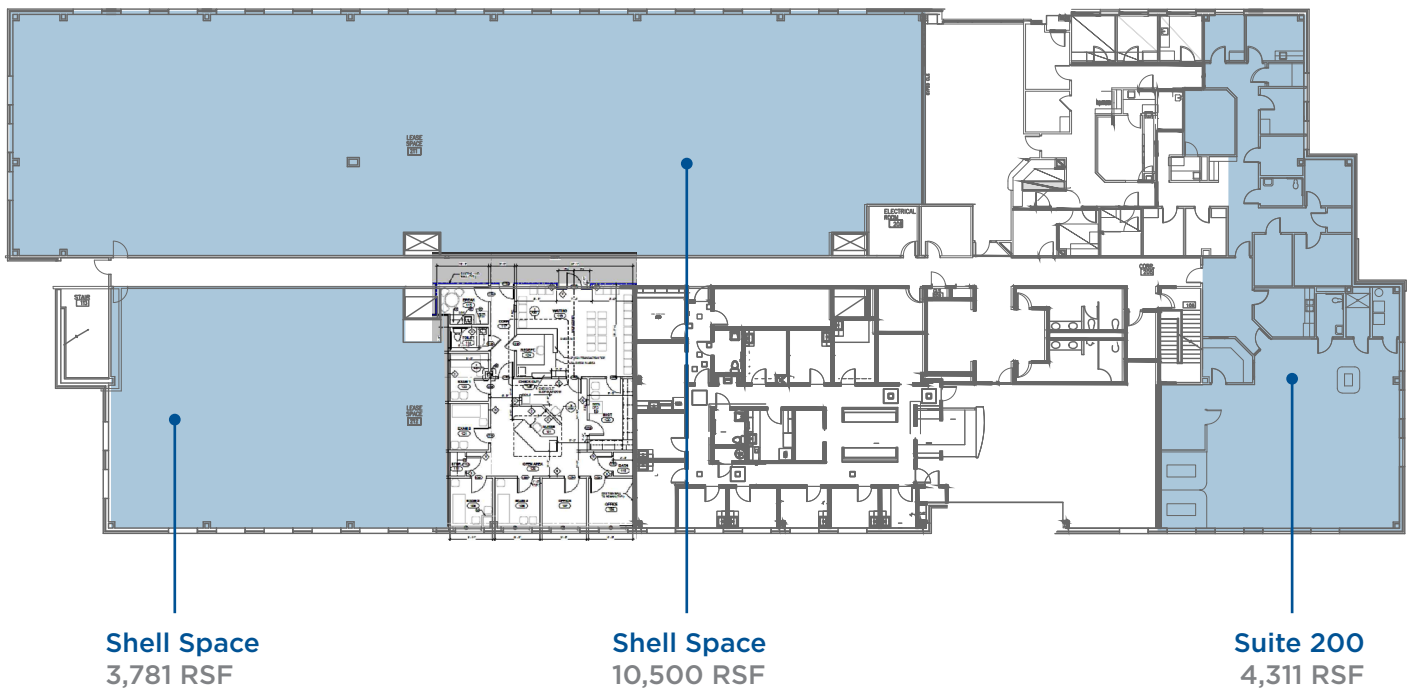
lwohrman@healthcarerealty.com

Collierville Physician Office Building

1458 West Poplar Avenue

Information contained herein does not constitute a legal offer or acceptance and shall not be legally binding, but shall serve as the basis for negotiation and execution of a mutually acceptable Lease Agreement.

FLOOR 2



Carma C. Jude
901.747.0300
cjude@healthcarerealty.com

Liza Wohrman
901.747.0300
lwohrman@healthcarerealty.com