

CREATIVE OFFICE SPACE FOR LEASE

209 FAYETTEVILLE ST
RALEIGH, NC 27601



Premium executive office suites up to 25,594 SF total. An iconic Downtown Raleigh location with many walkable amenities.



CALL OUR OFFICE
(919) 821-7880

BRAXTON ANTHONY, SIOR
banthony@richcommercialrealty.com

BO HARGROVE, SIOR
bhargrove@richcommercialrealty.com

PROPERTY DETAILS

209 FAYETTEVILLE ST
RALEIGH, NC 27601

SPACE OVERVIEW

- Suites ranging from 135 SF to 25,594 SF
- Flexible Lease terms available
- Exterior signage opportunities ranging from parapet, projecting and placard

BUILDING AMENITIES

- 2 shared conference rooms
- 1 shared training room with kitchenette with sink
- 1 shared collaboration space
- FF&E available
- Building secured by a ButterflyMX video intercom system

Fayetteville Street is located in the heart of Downtown Raleigh. Iconic and historic, this urban center is home to numerous Class A office spaces, residential condos, restaurants, and retail.

[Click here to see a full list of nearby amenities in Fayetteville Street District.](#)

The 209 Fayetteville St building was built in 1925, and renovated most recently in 2015 and 2021.



CALL OUR OFFICE
(919) 821-7880

BRAXTON ANTHONY, SIOR
banthony@richcommercialrealty.com

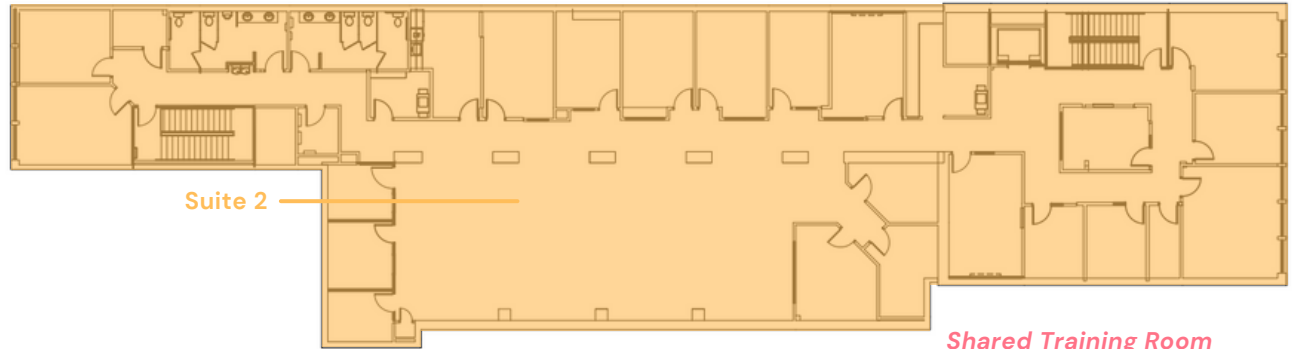
BO HARGROVE, SIOR
bhargrove@richcommercialrealty.com



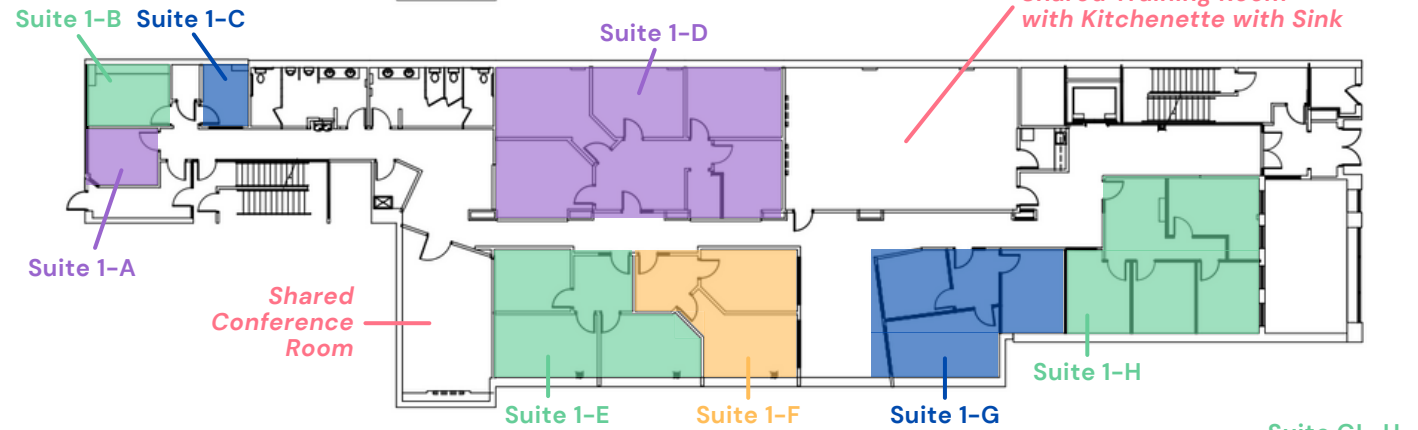
PROPERTY FLOORPLAN

209 FAYETTEVILLE ST
RALEIGH, NC 27601

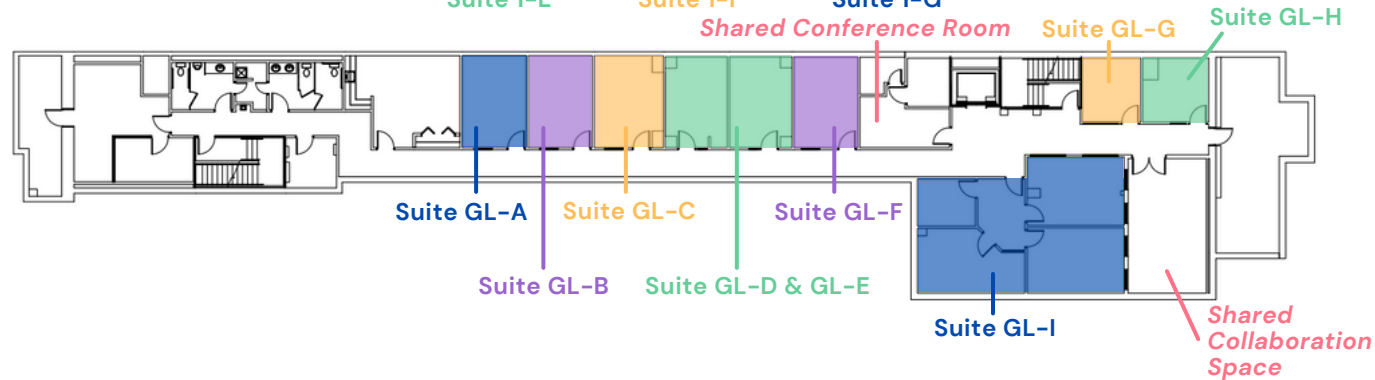
SECOND FLOOR



FIRST FLOOR



GROUND LEVEL



Note: all floorplans are approximate

CALL OUR OFFICE
(919) 821-7880

BRAXTON ANTHONY, SIOR
banthony@richcommercialrealty.com

BO HARGROVE, SIOR
bhargrove@richcommercialrealty.com



RENTAL RATES

209 FAYETTEVILLE ST
RALEIGH, NC 27601

SECOND FLOOR

Suite 2 **\$22.50/SF Full Service**
(10,887 RSF)

FIRST FLOOR

Suite 1-A **\$800 per month**
(Executive Suite)

Suite 1-B **\$800 per month**
(Executive Suite)

Suite 1-C **\$400 per month**
(Executive Suite)

Suite 1-D **\$3,320 per month**
(1,992 RSF)

Suite 1-E **\$1,700 per month**
(1,019 RSF)

Suite 1-H **\$2,400 per month**
(1,284 RSF)

GROUND LEVEL

Suite GL-A **\$600 per month**
(Executive Suite)

Suite GL-B **\$600 per month**
(Executive Suite)

Suite GL-C **\$600 per month**
(Executive Suite)

Suite GL-D & GL-E **\$1,200 per month**
(Combined Executive Suite)

Suite GL-F **\$600 per month**
(Executive Suite)

Suite GL-G **\$400 per month**
(Executive Suite)

Suite GL-H **\$400 per month**
(Executive Suite)

Suite GL-I **\$2,400 per month**
(1,731 RSF)

CALL OUR OFFICE
(919) 821-7880

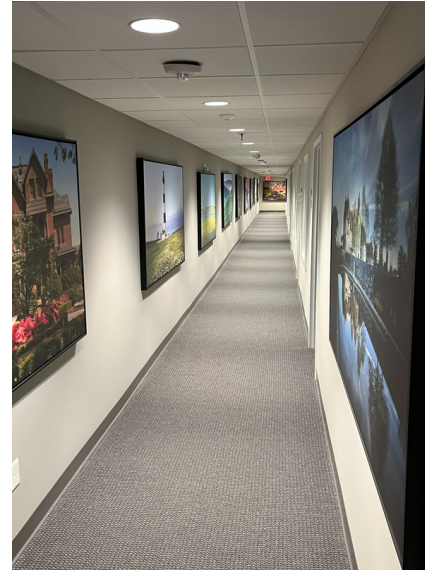
BRAXTON ANTHONY, SIOR
banthony@richcommercialrealty.com

BO HARGROVE, SIOR
bhargrove@richcommercialrealty.com



INTERIOR PHOTOS

209 FAYETTEVILLE ST
RALEIGH, NC 27601



CALL OUR OFFICE
(919) 821-7880

BRAXTON ANTHONY, SIOR
banthony@richcommercialrealty.com

BO HARGROVE, SIOR
bhargrove@richcommercialrealty.com





BRAXTON ANTHONY, SIOR

Principal
(919) 896-2145 Cell
banthony@richcommercialrealty.com



BO HARGROVE, SIOR

Principal
(919) 605-3889 Cell
bhargrove@richcommercialrealty.com



CALL OUR OFFICE

(919) 821-7880



VISIT OUR WEBSITE

www.richcommercialrealty.com



FOLLOW RCR ON INSTAGRAM

www.instagram.com/richcommercialrealty



OFFICE ADDRESS

Rich Commercial Realty
3840 Ed Drive, Suite 108
Raleigh, NC 27612