



25 INDUSTRIAL ACRE DEVELOP. OPP. OFF HWY 63

Elder Ferry Rd, Moss Point, MS 39563

TIM CARLSON • PRINCIPAL

OFFICE: 228.276.2700

MOBILE: 228.547.0707

tcarlson@southeastcre.com

MONTE LUFFEY • PRINCIPAL

OFFICE: 228.276.2700

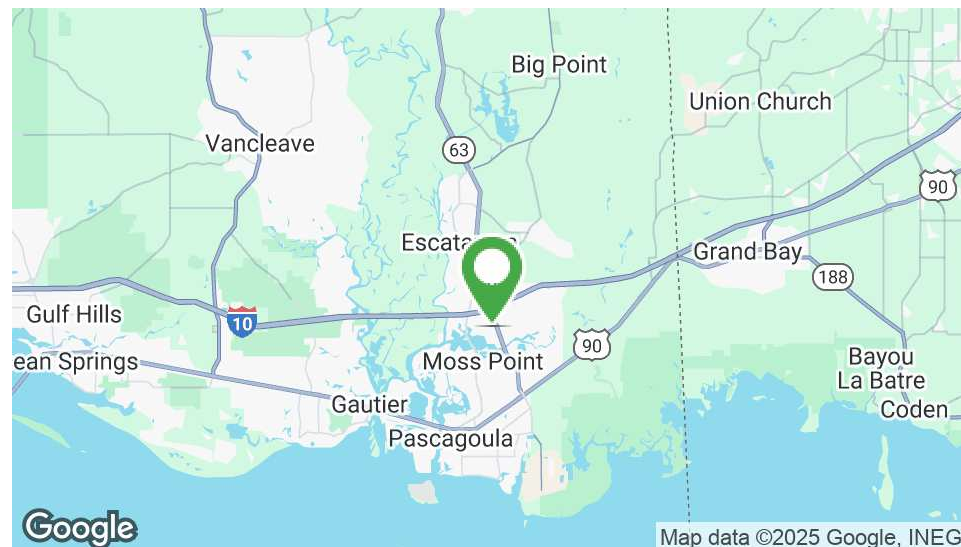
MOBILE: 228.547.1953

mluffey@southeastcre.com



PROPERTY DESCRIPTION

Southeast Commercial is pleased to offer 25 industrial acres located off of Highway 63 in Moss Point, MS. Situated on Elder Ferry Road, this I-H Heavy Industrial District Zoned property offers easy access to Interstate 10 and Highway 63. Ample space for manufacturing, distribution, and room for expansion. This site is 6-7 miles north of Chevron Oil Refinery and Ingalls Shipbuilding, two of the largest industries on the MS Gulf Coast. Trent Lott International Airport and Northrop Grumman Corporation are ~4 miles to the north. Various other industrial businesses are in close proximity to the site.



PROPERTY HIGHLIGHTS

- Zoned I-H Heavy Industrial District
- Easy access to major transportation routes
- Close proximity to shipping and logistics hubs
- Potential for manufacturing or distribution facilities
- Room for expansion and future growth

OFFERING SUMMARY

| | |
|-------------|-------------|
| Sale Price: | \$6,000,000 |
| Lot Size: | 25 Acres |

LAND FOR SALE

PROPERTY SUMMARY





25 INDUSTRIAL ACRE DEVELOP. OPP. OFF HWY 63

Elder Ferry Rd, Moss Point, MS 39563

TIM CARLSON • PRINCIPAL

OFFICE: 228.276.2700

MOBILE: 228.547.0707

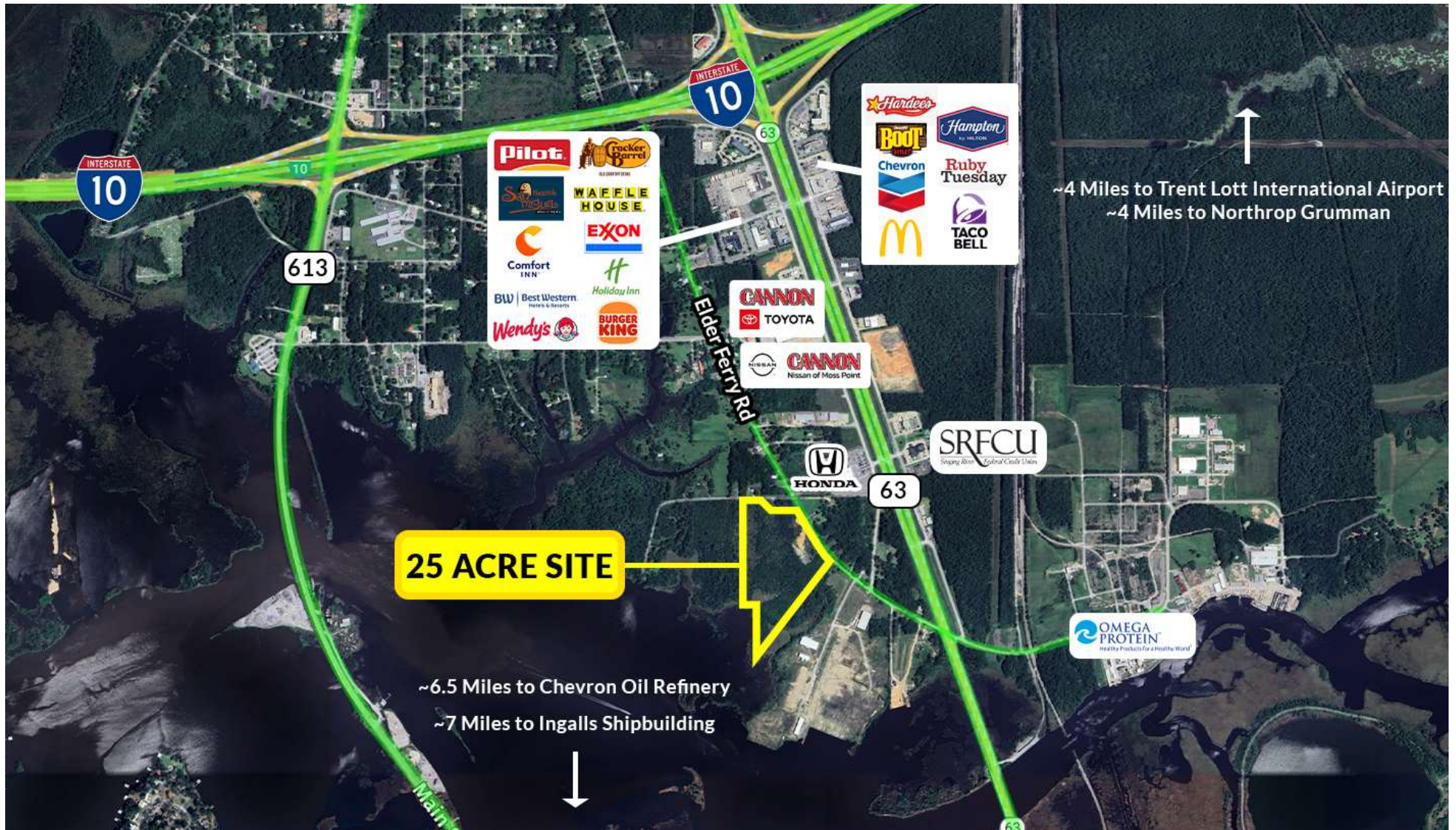
tcarlson@southeastcre.com

MONTE LUFFEY • PRINCIPAL

OFFICE: 228.276.2700

MOBILE: 228.547.1953

mluffey@southeastcre.com



LAND FOR SALE

AERIAL

