

# SUBLEASE

# MID COUNTIES

MANUFACTURING / WAREHOUSE

## 8312 & 8339 ALLPORT AVE

SANTA FE SPRINGS, CA 90670



### FEATURES:

- Two (2) Industrial Buildings | Available Together or Separately
- Sublease through December 31, 2026 | Longer Term Possible
- 8339 Allport - Turnkey Cosmetic Manufacturing Facility
- Approximately 17k SF with Fenced Yard
- Distributed Heavy Power, Water Filtration System, Compressor, Solar Power
- 8312 Allport Ave - New Construction (2018)
- Approximately 10k SF with -2,500 SF Two (2) Story Office
- Incredible 27' Clear Height | All Racking Can Stay
- Strong Credit Sublessor

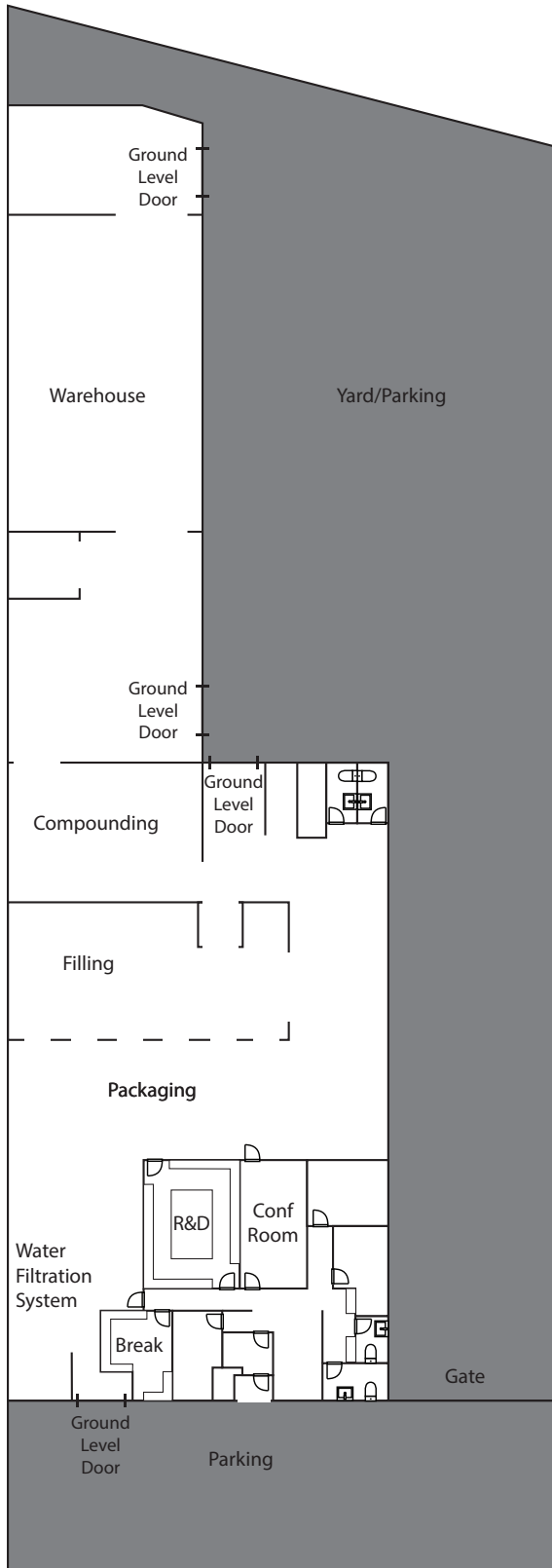
### EXCLUSIVELY LISTED BY:

**TYLER PORTMAN**  
562.762.3152  
tyler@gmpropertiesinc.com

**MATT WAGNER, CCIM**  
562.762.3140  
matt@gmpropertiesinc.com

**GM**  
PROPERTIES

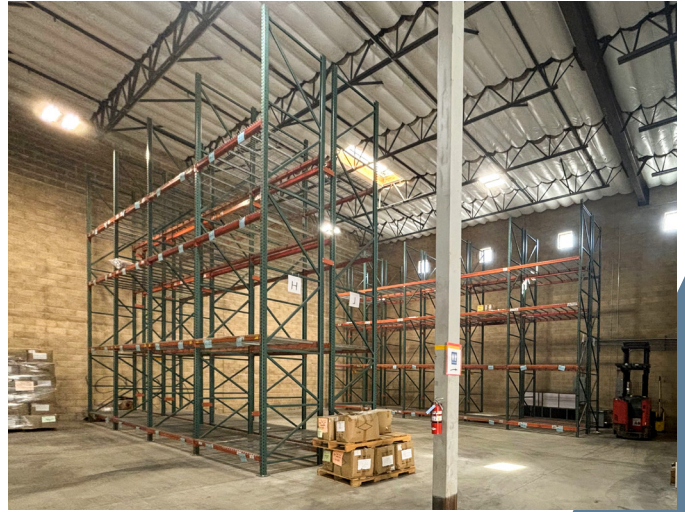
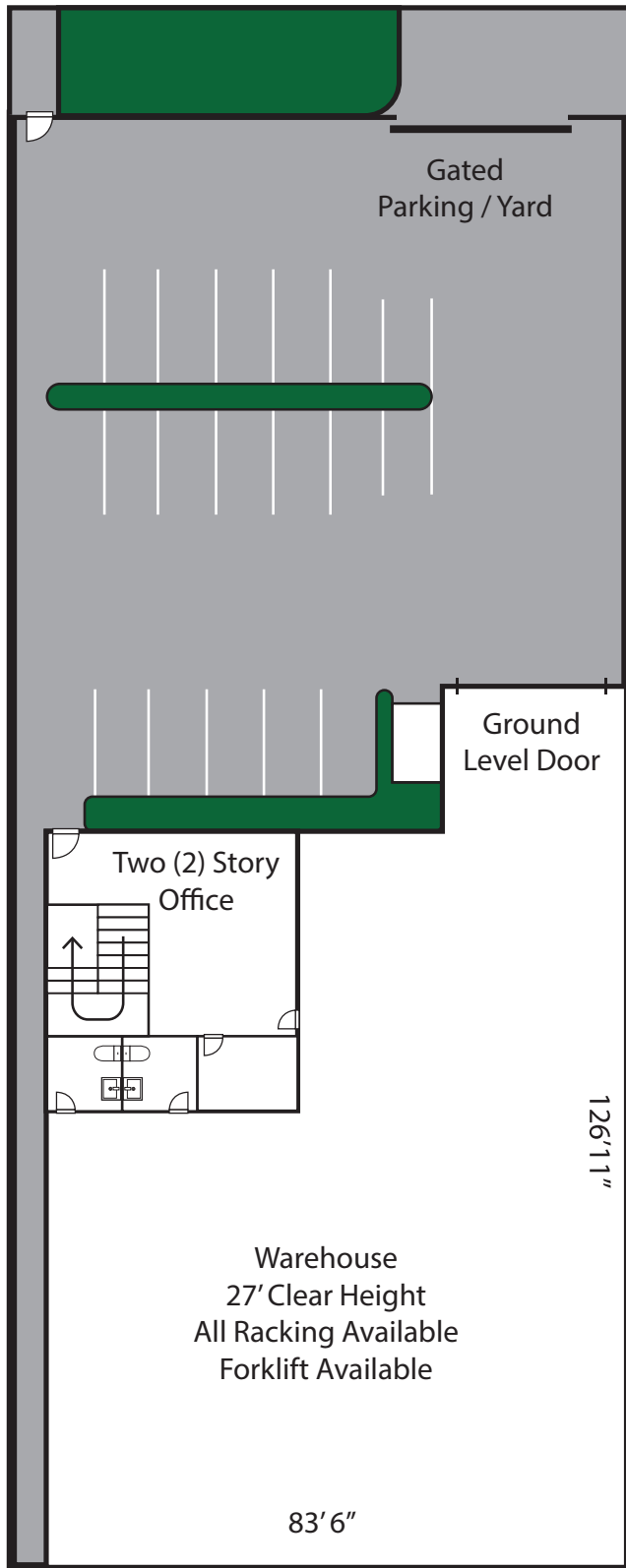
# 8339 ALLPORT AVE - 17K SF



No warranty, expressed or implied, is made as to the accuracy of the information contained herein. This information is subject to errors, omissions, change of price, sale, lease or other conditions, withdrawal without notice, and is subject to any special listing conditions imposed by our principals. Cooperating brokers, Prospective Buyers or Tenants and other parties who receive this document should not rely on it, but should use it as a starting point of analysis, and should independently confirm the accuracy of the information contained herein through a due diligence of the books, records, files and documents that constitute reliable sources of the information described herein.



# 8312 ALLPORT AVE – 10K SF



No warranty, expressed or implied, is made as to the accuracy of the information contained herein. This information is subject to errors, omissions, change of price, sale, lease or other conditions, withdrawal without notice, and is subject to any special listing conditions imposed by our principals. Cooperating brokers, Prospective Buyers or Tenants and other parties who receive this document should not rely on it, but should use it as a starting point of analysis, and should independently confirm the accuracy of the information contained herein through a due diligence of the books, records, files and documents that constitute reliable sources of the information described herein.