

650

CASTRO STREET

MOUNTAIN VIEW CITY CENTER



DISCOVER WHAT'S POSSIBLE | ±89,831 SQUARE FEET CLASS A+ OFFICE SPACE | DIVISIBLE DOWN TO ±12,150 SQUARE FEET

650 WELCOME

Located on Castro Street in the heart of Mountain View's pedestrian-oriented downtown and its plethora of amenities including: dining options from an array of cultures, specialty shops, bookstores, coffeehouses and the Mountain View Center for Performing Arts.

650 Castro is walking distance from the Caltrain station's bullet stop at Downtown Mountain View Station, an intermodal transit station that serves as a stop for CalTrain (local and Baby Bullet Service), VTA light rail and numerous bus lines.

The property enjoys convenient access to Highways 101, 237, 85 and 280.

650

CASTRO STREET

MOUNTAIN VIEW CITY CENTER

HIGHLIGHTS

Within walking distance of Downtown, Mountain View. City Center is miles ahead of other office buildings in this market when it comes to features and perks. Boasting plentiful parking for both tenants and guests, and planned renovations to include a new lobby design and a fitness center, this property has a full slate of amenities both on site and close by.



±89,831 SF
of Class A office
space on 3 floors.



Outdoor patio space
on every level.



On-site retail
includes a dry cleaner and a
UPS Store.



Expansive floor
plates allow for
growth.



Nearby Eagle Park
has a swimming
pool, green space,
kids' area and an
off-leash dog run.



Courtyard with
Starbucks for
collaborative
coffee breaks.



On-site eateries
include Le Boulanger,
1 Oz Coffee and
Mediterranean Grill
House.



Proximity to both
Caltrain and Light
Rail.

BIG IDEAS NEED BIG SPACES | ±89,831 SQUARE FEET CLASS A+ OFFICE SPACE | DIVISIBLE DOWN TO ±12,150 SQUARE FEET

650

CASTRO STREET

MOUNTAIN VIEW CITY CENTER

FOURTH FLOOR ±28,482 SF

THIRD FLOOR ±30,218 SF

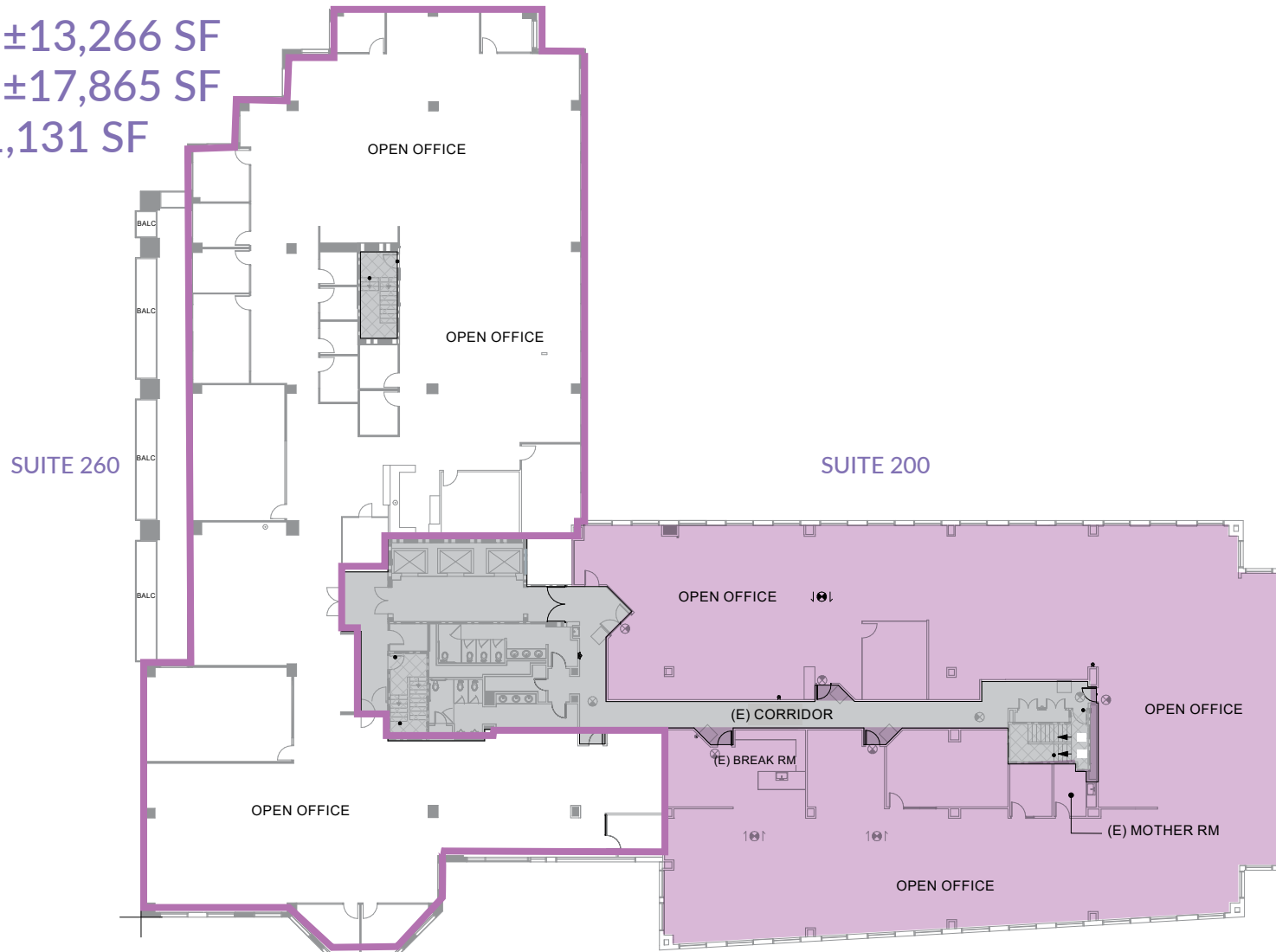
SECOND FLOOR ±31,131 SF

3 FLOORS OF CLASS A+ OFFICE SPACE



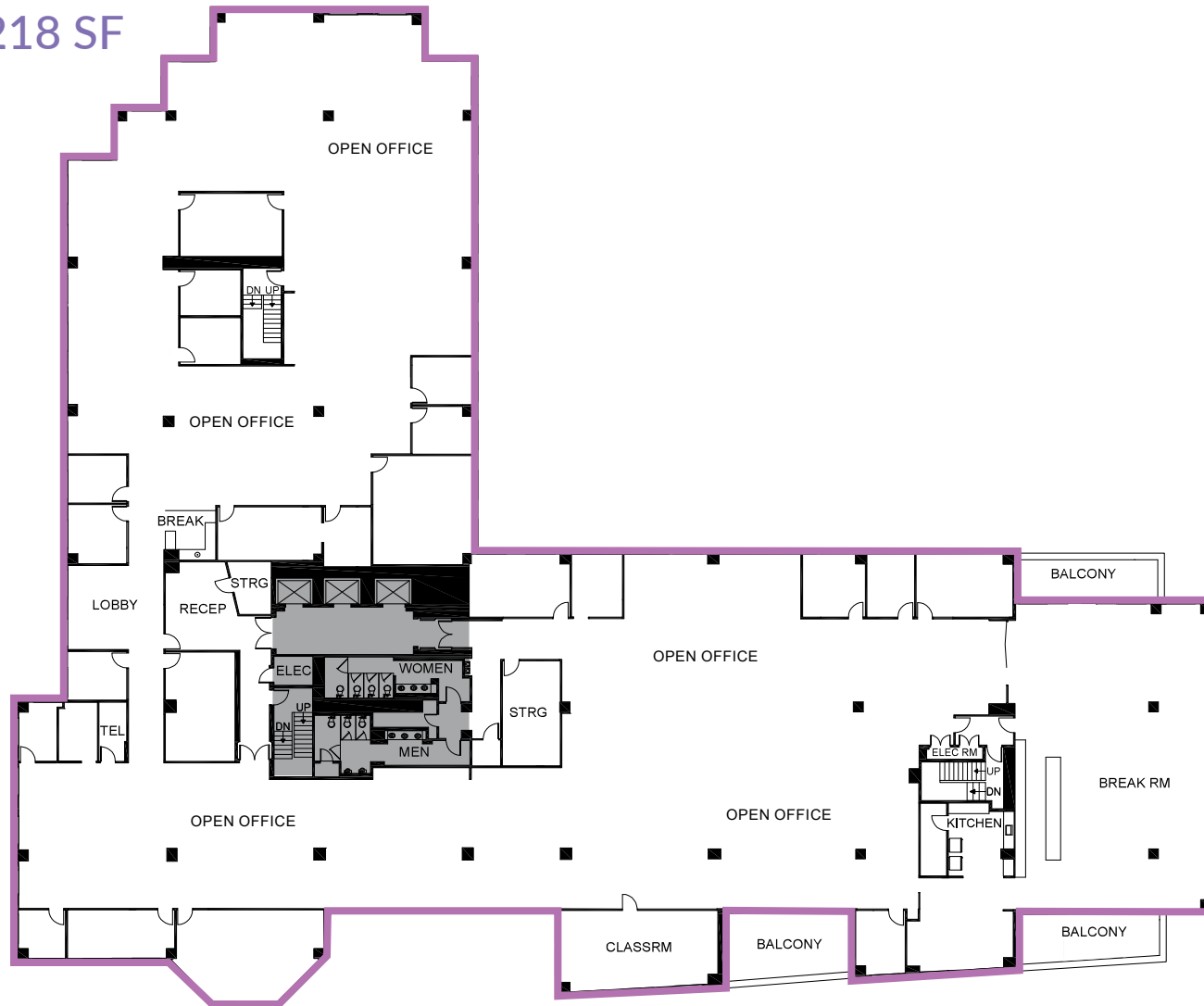
SECOND FLOOR

SUITE 200: ±13,266 SF
SUITE 260: ±17,865 SF
TOTAL: ±31,131 SF



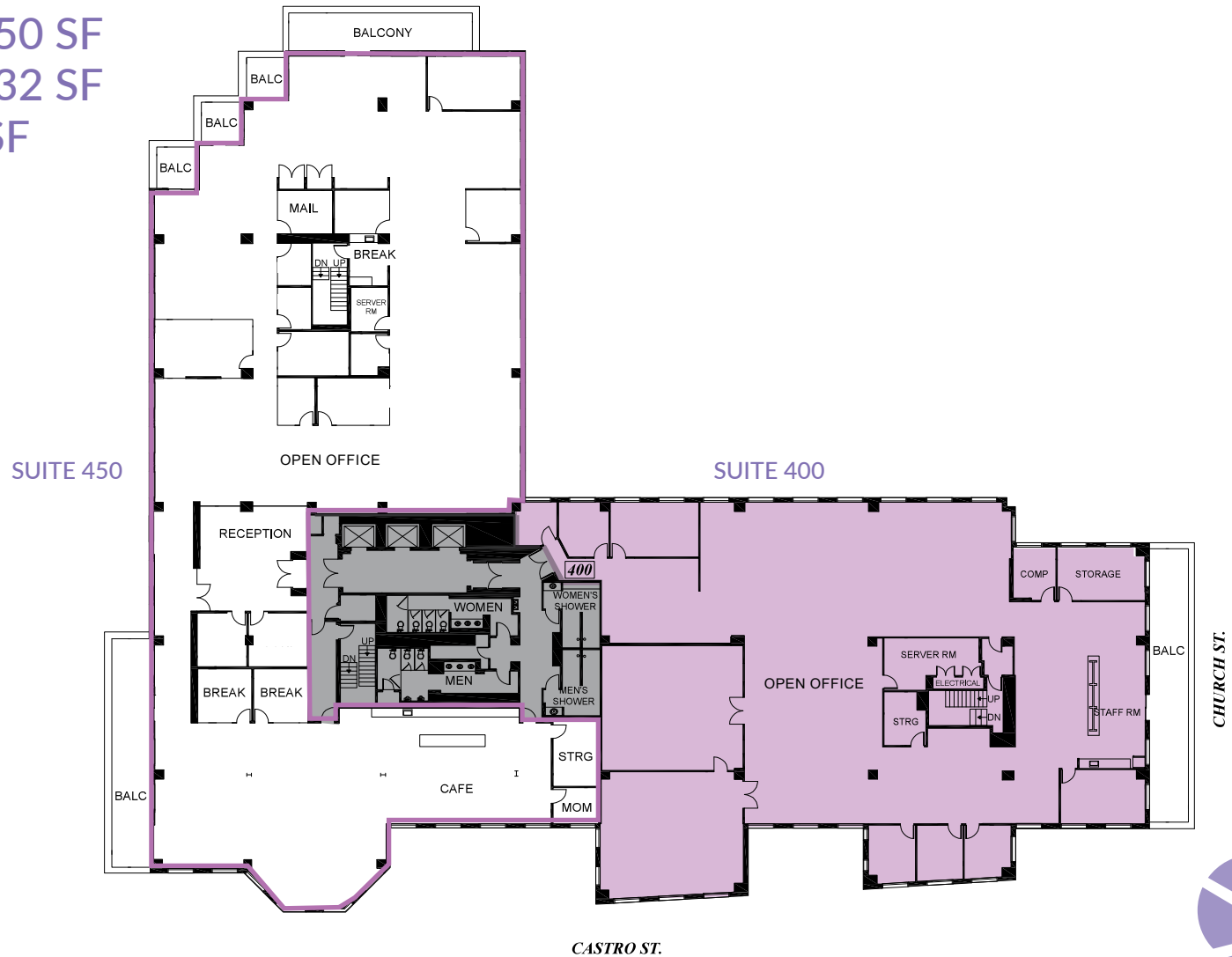
THIRD FLOOR

SUITE 300: ± 30,218 SF



FOURTH FLOOR

SUITE 400: ±12,150 SF
SUITE 450: ±16,332 SF
TOTAL: ±28,482 SF





650
CASTRO STREET
MOUNTAIN VIEW CITY CENTER



650

CASTRO STREET

MOUNTAIN VIEW CITY CENTER



WORKOUT ON SITE

EAGLE PARK

Named after the mascot of the high school that once stood here, Eagle Park is like a big, amenity-filled backyard for tenants of 650 Castro. Located just steps from the building, the Park has a number of amenities for visitors.



A large, lush green field is ideal for an impromptu soccer game, an after-work yoga session or just a nice, sunny walk at lunchtime.



Large trees provide a shade canopy, and a variety of seating offers plenty of space to relax, read a book or just watch the world go by



With the restaurant options available at 650 Castro, it's easy to grab some take-out and head to the park, where picnic tables provide the perfect spot for an al fresco meal.



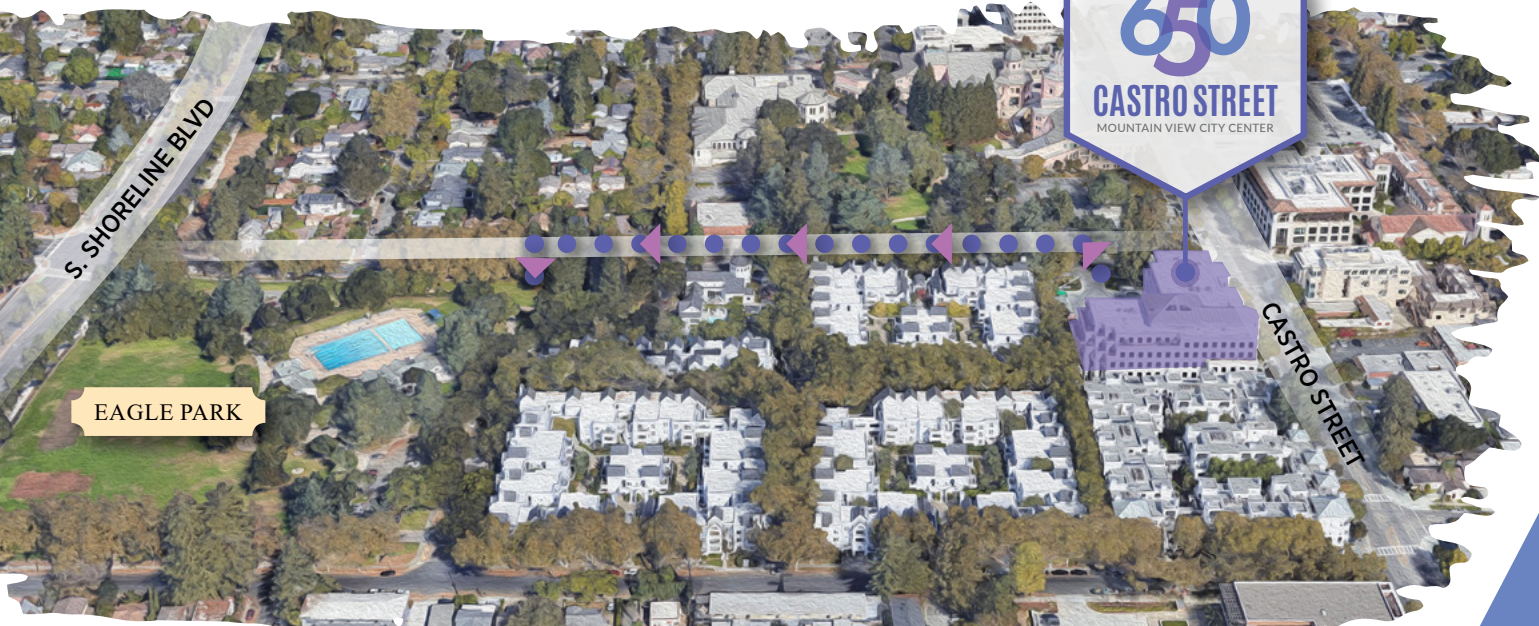
A play area with slides, seesaws and swings is a perfect place for kids to expend some energy.



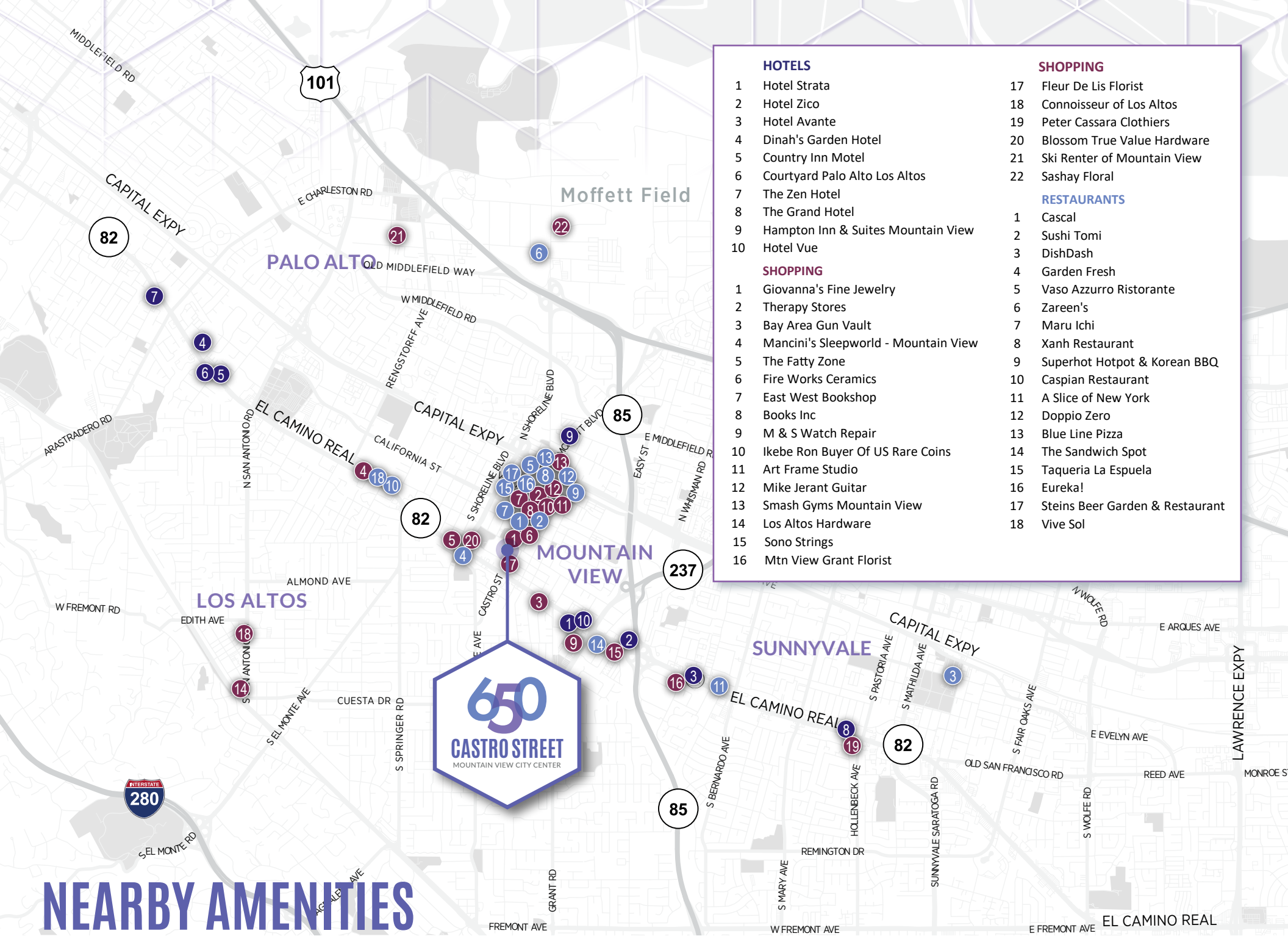
A leash-free dog area let's Fido run around with some canine buddies.



There's an Olympic-size swimming pool where a program offers lap swim appointments and drop-in availability. A small changing area is on site.



AN EXPANSIVE
GREEN SPACE JUST
ONE BLOCK AWAY



HOTELS

- 1 Hotel Strata
- 2 Hotel Zico
- 3 Hotel Avante
- 4 Dinah's Garden Hotel
- 5 Country Inn Motel
- 6 Courtyard Palo Alto Los Altos
- 7 The Zen Hotel
- 8 The Grand Hotel
- 9 Hampton Inn & Suites Mountain View
- 10 Hotel Vue

SHOPPING

- 1 Giovanna's Fine Jewelry
- 2 Therapy Stores
- 3 Bay Area Gun Vault
- 4 Mancini's Sleepworld - Mountain View
- 5 The Fatty Zone
- 6 Fire Works Ceramics
- 7 East West Bookshop
- 8 Books Inc
- 9 M & S Watch Repair
- 10 Ikebe Ron Buyer Of US Rare Coins
- 11 Art Frame Studio
- 12 Mike Jerant Guitar
- 13 Smash Gyms Mountain View
- 14 Los Altos Hardware
- 15 Sono Strings
- 16 Mtn View Grant Florist

SHOPPING

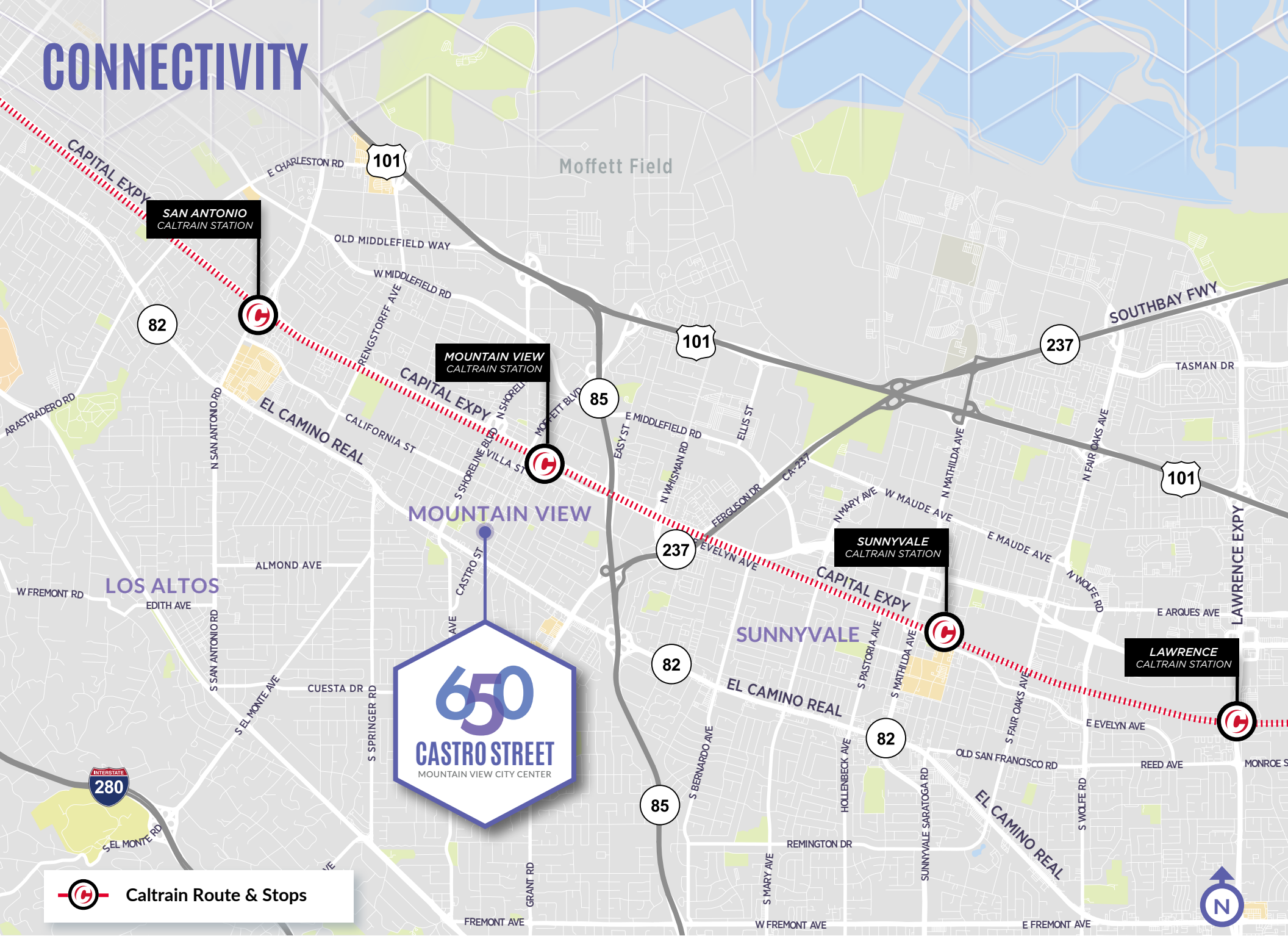
- 17 Fleur De Lis Florist
- 18 Connoisseur of Los Altos
- 19 Peter Cassara Clothiers
- 20 Blossom True Value Hardware
- 21 Ski Renter of Mountain View
- 22 Sashay Floral

RESTAURANTS

- 1 Cascal
- 2 Sushi Tomi
- 3 DishDash
- 4 Garden Fresh
- 5 Vaso Azzurro Ristorante
- 6 Zareen's
- 7 Maru Ichi
- 8 Xanh Restaurant
- 9 Superhot Hotpot & Korean BBQ
- 10 Caspian Restaurant
- 11 A Slice of New York
- 12 Doppio Zero
- 13 Blue Line Pizza
- 14 The Sandwich Spot
- 15 Taqueria La Espuela
- 16 Eureka!
- 17 Steins Beer Garden & Restaurant
- 18 Vive Sol

NEARBY AMENITIES

CONNECTIVITY



SAN ANTONIO
CALTRAIN STATION

MOUNTAIN VIEW
CALTRAIN STATION

SUNNYVALE
CALTRAIN STATION

LAWRENCE
CALTRAIN STATION

650
CASTRO STREET
MOUNTAIN VIEW CITY CENTER

 **Caltrain Route & Stops**



650

CASTRO STREET

MOUNTAIN VIEW CITY CENTER



For More Information, Please Contact:

DAVID HIEBERT | Vice Chairman | +1 650 320 0250 | david.hiebert@cushwake.com | LIC #01189320

DAN PERSYN | Executive Managing Director | +1 650 320 0255 | dan.persyn@cushwake.com | LIC #01184798

RON MILLER | Director | +1 650 320 0207 | ron.miller@cushwake.com | LIC #01811036

SOFIA LUNDELL | Associate | +1 650 320 0220 | sofia.lundell@cushwake.com | LIC #02201946



©2023 Cushman & Wakefield. All rights reserved. The information contained in this communication is strictly confidential. This information has been obtained from sources believed to be reliable but has not been verified. NO WARRANTY OR REPRESENTATION, EXPRESS OR IMPLIED, IS MADE AS TO THE CONDITION OF THE PROPERTY (OR PROPERTIES) REFERENCED HEREIN OR AS TO THE ACCURACY OR COMPLETENESS OF THE INFORMATION CONTAINED HEREIN, AND SAME IS SUBMITTED SUBJECT TO ERRORS, OMISSIONS, CHANGE OF PRICE, RENTAL OR OTHER CONDITIONS, WITHDRAWAL WITHOUT NOTICE, AND TO ANY SPECIAL LISTING CONDITIONS IMPOSED BY THE PROPERTY OWNER(S). ANY PROJECTIONS, OPINIONS OR ESTIMATES ARE SUBJECT TO UNCERTAINTY AND DO NOT SIGNIFY CURRENT OR FUTURE PROPERTY PERFORMANCE. COE-PM-WEST- 04/17/23