

1095 SE Bishop Blvd, Pullman



Property Description

For sale in Pullman, Washington - 8,000 SF building perfect for an expanding office/retail user or Investor. The footprint Includes a brand-new dental office, (4,940 SF) renovated in 2019 with \$2 million in improvements. There's an additional 3,125 square feet still available in shell condition, ready for customization. This could be great for a larger tenant or a second business.

New 4x8 digital reader board will help bring your business alive!

The property is on a busy road, sharing access with a major anchor in the Pullman market. All of this is set on 1.34 acres and available for a purchase price of \$3 million. Don't miss this opportunity to invest in a versatile space with a lot of potential in a growing Market.

Contact Listing Brokers for more detail showing access.

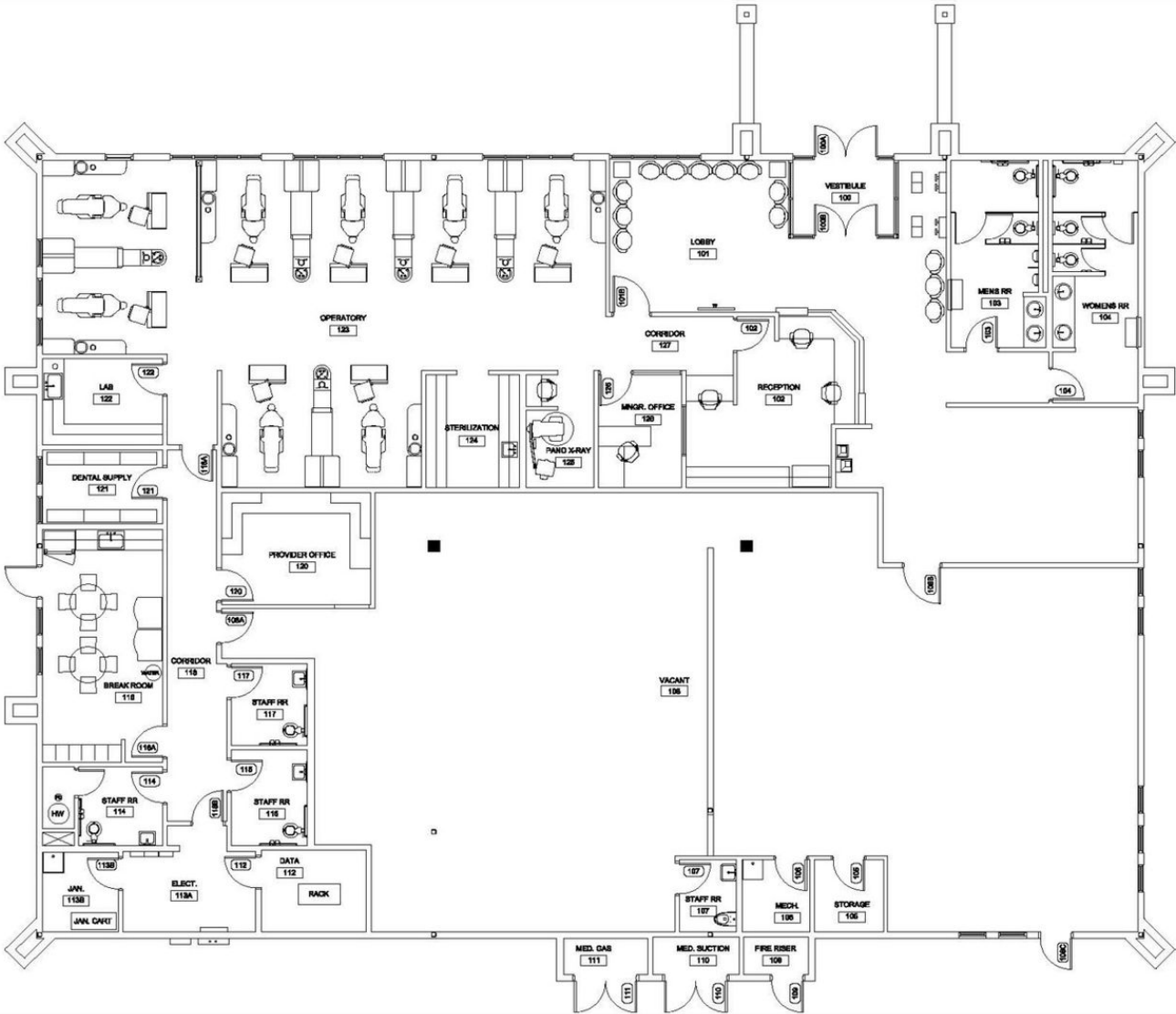
Offering Summary

Sale Price:	\$3,000,000
Number of Units:	1
Lot Size:	1.39 Acres
Building Size:	8,065 SF

Additional Photos



Floor Plans



**Yakima Valley
Farm Workers Clinic**
130 - Pullman, Unify Family Dental
1095 SE Bishop Blvd, Pullman, WA 99163

8065 SF Total
4,940 SF Finished

Floor Plan
Drawing Not To Scale

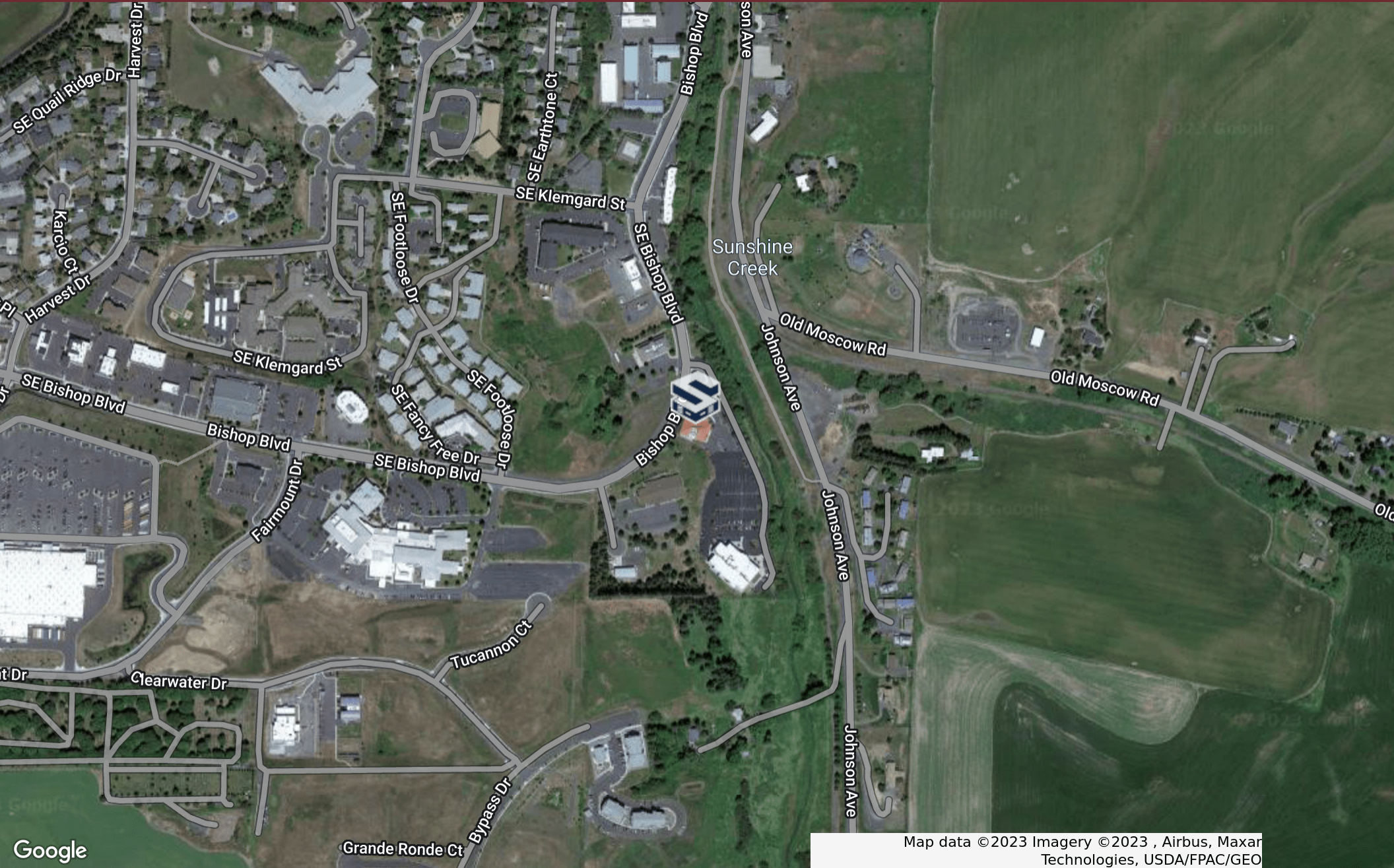
Updated: 9/16/2019



Derrick Stricker CCIM SIOR 509.430.8533

strickerCRE.com

Location Map



Map data ©2023 Imagery ©2023 , Airbus, Maxar Technologies, USDA/FPAC/GEO