



Property Description

West End is a newly renovated, expansive storefront located in the heart of Downtown Napa on 1st Street—a prime, high foot-traffic area surrounded by an exciting mix of world-class restaurants, tasting rooms, and luxury hotels. This unparalleled location offers exposure and convenience, making it a great setting for retail or office use.

- Prime location: Positioned in the vibrant downtown area, your business will be steps away from First Street Napa, Archer Hotel, boutique retail shops, and premium dining options.

- High Visibility & Foot Traffic: Proximity to major attractions such as Blue Note Napa, Uptown Theatre, and Oxbow Public Market, this storefront offers an incredible opportunity to capture both local and tourist traffic.

- Business-Friendly Environment: Located near Napa City Hall, Fire Department, Napa Chamber of Commerce and Planning Department.

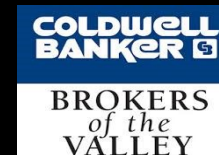
- Parking: Public parking structure is directly behind the building for ease of access.

Don't miss out on this incredible opportunity to establish your business in one of Napa's most preferred locations.

Offering Summary

Suite 100 - Available SF:	± 3,305.70 SF
Suite 100 - Sublease Rate:	\$4.64/SF/month (NNN)
Suite 160 - Available SF:	± 2,409.45 SF
Suite 160 - Sublease Rate:	\$3.50 SF/month (NNN)
Building Size:	± 25,000 SF

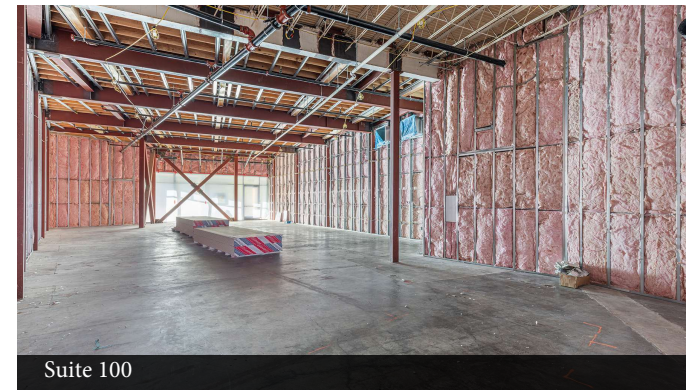
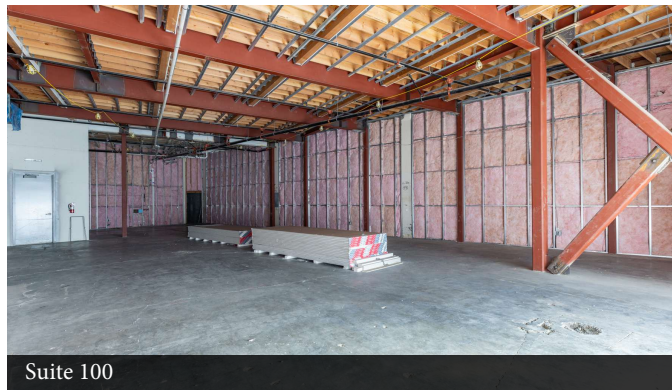
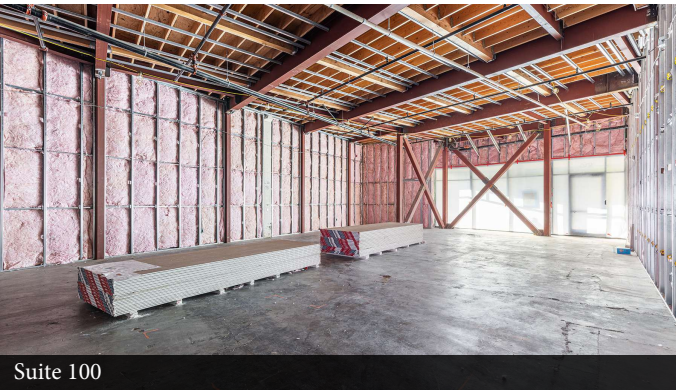
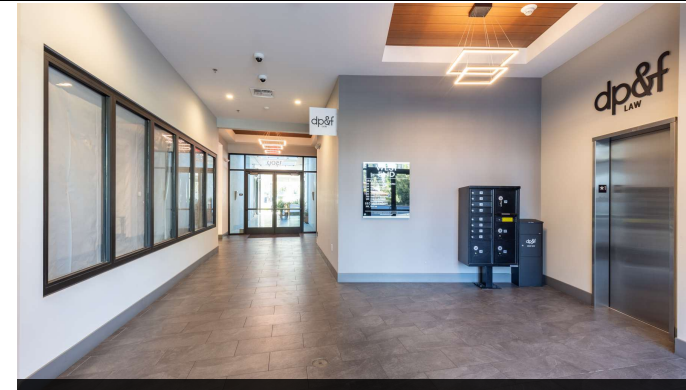
Michael Holcomb
 CalDRE #01458995
 707.294.2944
 mholcomb@wrealestate.net



Jeff Feeny
 CalDRE #01329335
 707.580.5678
 jfeeny@cbnapavalley.com

Additional Photos

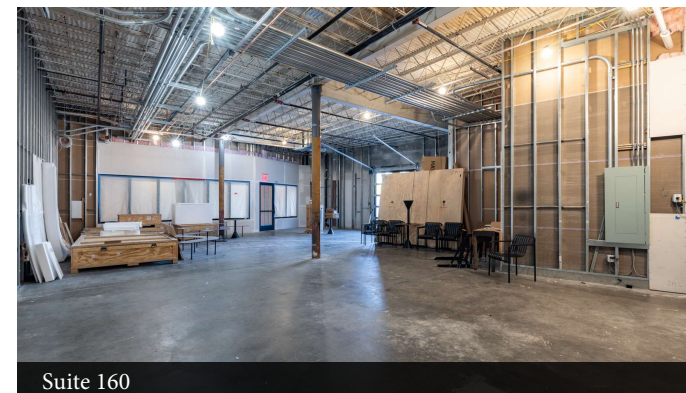
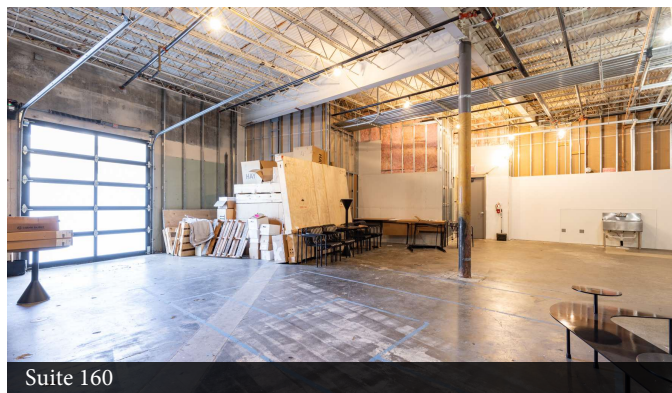
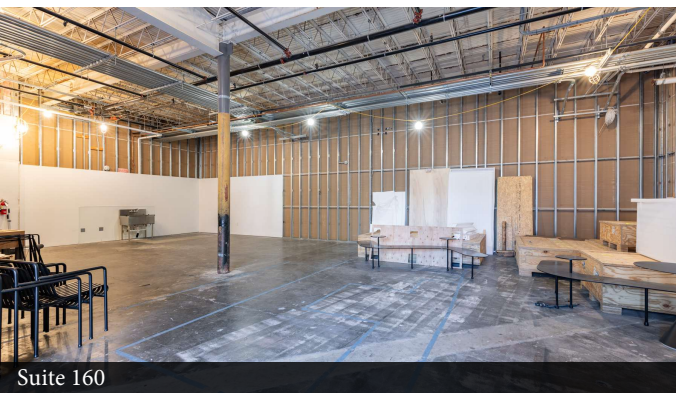
West End | 1500 First Street, Napa, CA 94559



Suite 100

Suite 100

Suite 100

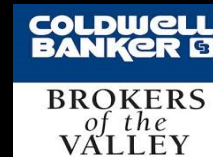


Suite 160

Suite 160

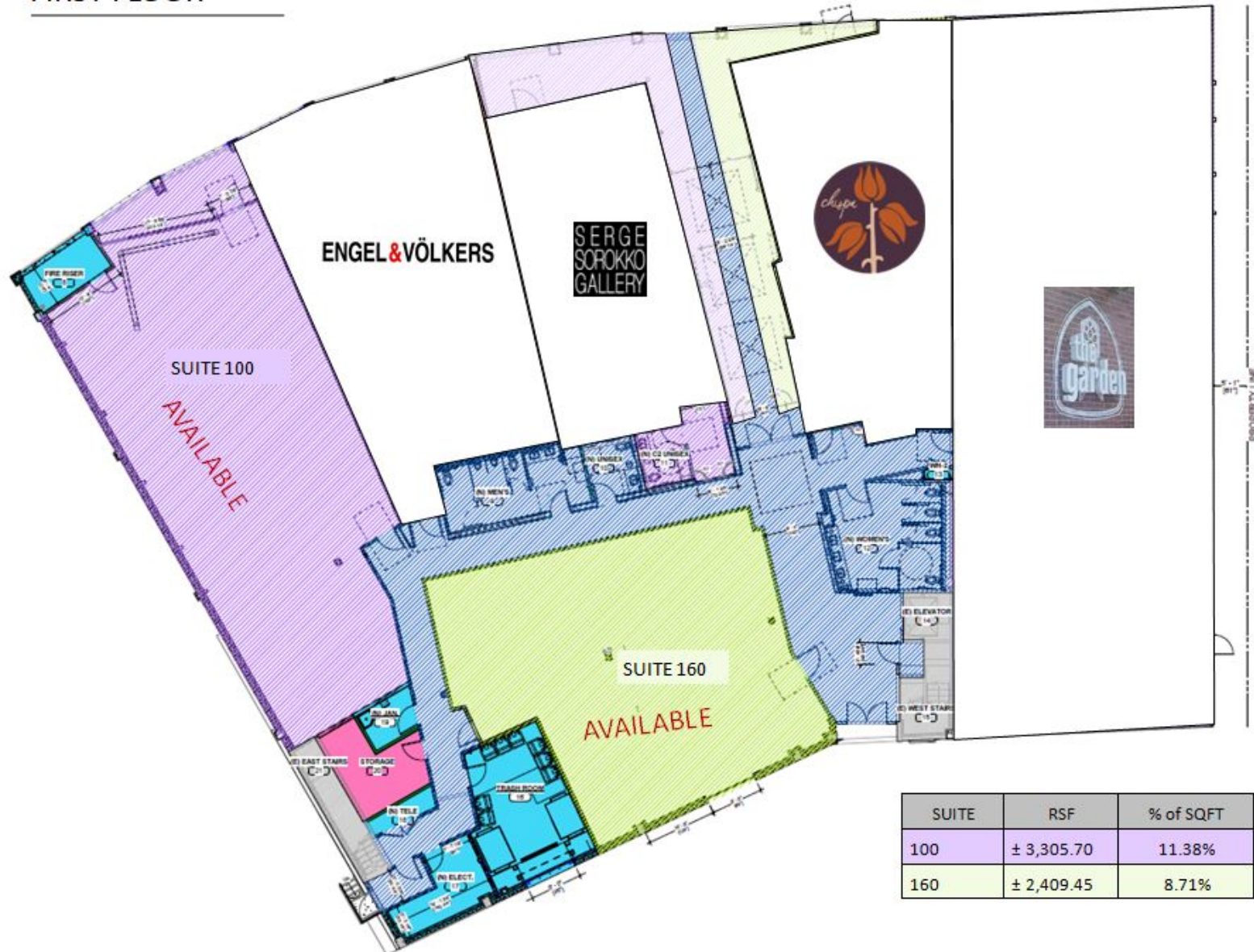
Suite 160

Michael Holcomb
CalDRE #01458995
707.294.2944
mholcomb@wrealestate.net



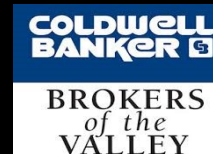
Jeff Feeney
CalDRE #01329335
707.580.5678
jfeeney@cbnapavalley.com

FIRST FLOOR

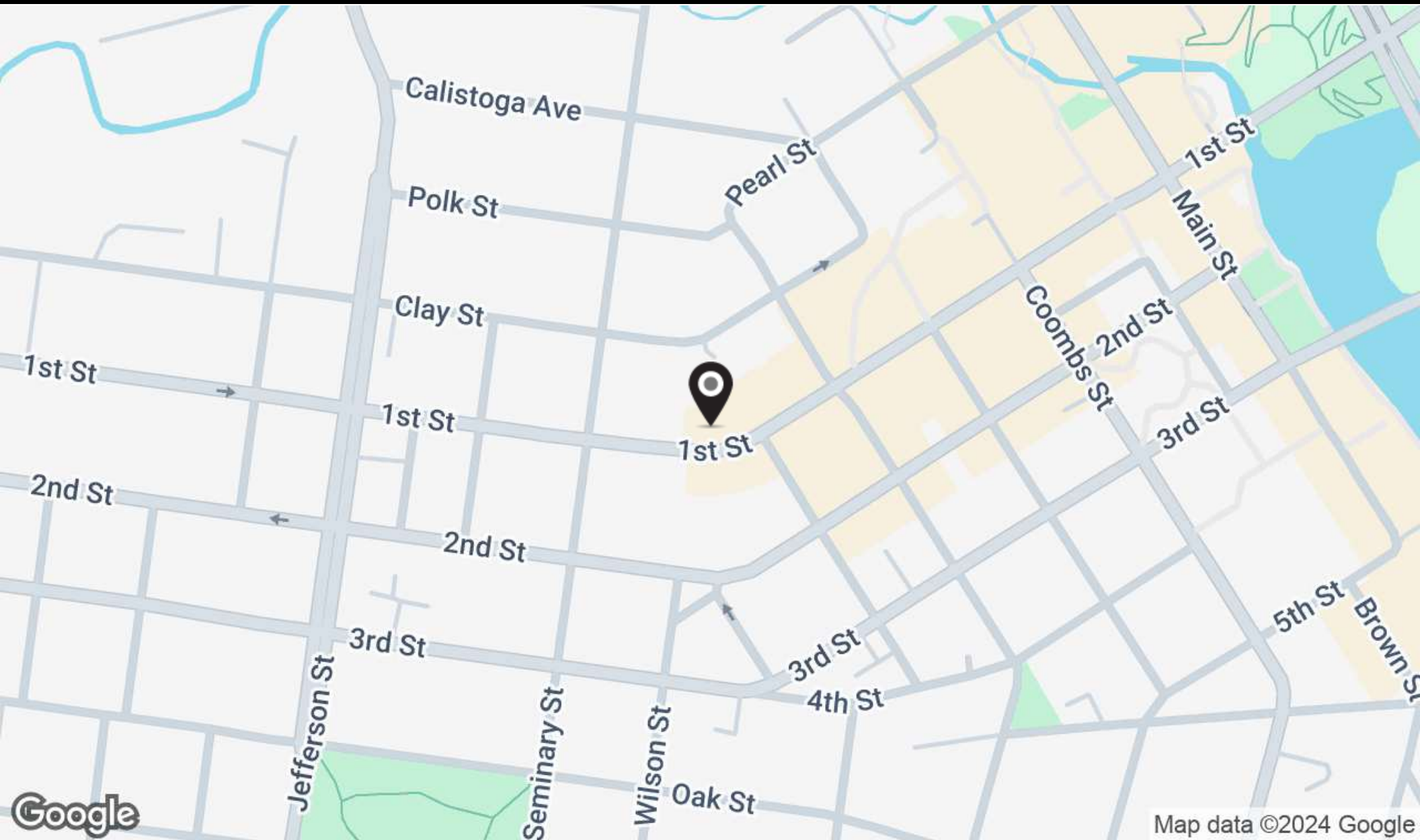




Michael Holcomb
CalDRE #01458995
707.294.2944
mholcomb@wrealestate.net



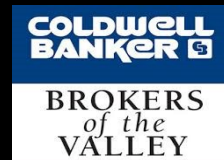
Jeff Feeny
CalDRE #01329335
707.580.5678
jfeeny@cbnapavalley.com



Google

Map data ©2024 Google

Michael Holcomb
CalDRE #01458995
707.294.2944
mholcomb@wrealestate.net



Jeff Feeney
CalDRE #01329335
707.580.5678
jfeeney@cbnapavalley.com