

RECEIVED  
 MAR 10 2000  
 TAHOE REGIONAL  
 PLANNING AGENCY

**LAND COVERAGE CALCULATIONS**

PARCELS	CLASS 1	CLASS 5	TOTAL
APN: 093-041-005 (SNYDER) LOT AREA: (LOT 19A) ALLOWABLE BASE COVERAGE: EXISTING COVERAGE:	21,163 SF	0 SF	21,163 SF
HARD: T.A.R.T. BUILDING, STAIRS LUMBER BUILDING A.C. DRIVE, CONCRETE PORCH SUB-TOTAL	3,733 SF 4,425 SF 5,450 SF 13,608 SF	0 SF 0 SF 0 SF 0 SF	3,733 SF 4,425 SF 5,450 SF 13,608 SF
SOFT: DIRT DRIVEWAY	3,730 SF	0 SF	3,730 SF
TOTAL EXISTING COVERAGE:	17,338 SF	0 SF	17,338 SF
APN: 093-041-004 (SNYDER) LOT AREA: (LOTS 15A & 16A) ALLOWABLE BASE COVERAGE: EXISTING COVERAGE:	18,850 SF	0 SF	18,850 SF
HARD: LUMBER SHED A.C. DRIVEWAY SUB-TOTAL	418 SF 1,082 SF 5,038 SF	0 SF 0 SF 0 SF	418 SF 1,082 SF 5,038 SF
SOFT: DIRT DRIVEWAY/PARKING	3,395 SF	0 SF	3,395 SF
TOTAL EXISTING COVERAGE:	8,433 SF	0 SF	8,433 SF
APN: 093-041-006 (FINGER) LOT AREA: (LOTS 17A & 18A) ALLOWABLE BASE COVERAGE: EXISTING COVERAGE:	0 SF	7,429 SF	7,429 SF
HARD: STORE #1 STORE SHED #1 STORE #2 (BEAUTY SHOP) STORE SHED #2 A.C. DRIVEWAY SUB-TOTAL	0 SF 0 SF 0 SF 0 SF 0 SF 0 SF	1,082 SF 74 SF 1,049 SF 200 SF 132 SF 2,517 SF	1,082 SF 74 SF 1,049 SF 200 SF 132 SF 2,517 SF
SOFT: DIRT DRIVEWAY/PARKING	0 SF	1,192 SF	1,192 SF
TOTAL EXISTING COVERAGE:	0 SF	3,709 SF	3,709 SF

PARCELS	CLASS 1	CLASS 5	TOTAL
APN: 093-051-004 (SNYDER) LOT AREA: (LOT 16A) ALLOWABLE BASE COVERAGE: EXISTING COVERAGE:	843 SF	14,390 SF	15,033 SF
HARD: SHED #1 (ON SITE) SHED #2 SHED #3 SUB-TOTAL	0 SF 0 SF 0 SF 0 SF	71 SF 199 SF 86 SF 356 SF	71 SF 199 SF 86 SF 356 SF
SOFT: FEED BIN CORRAL LUMBER SHED (REMOVED) DIRT PARKING DIRT DRIVEWAYS SUB-TOTAL	0 SF 0 SF 0 SF 0 SF 843 SF 843 SF	88 SF 786 SF 128 SF 1,224 SF 3,889 SF 6,117 SF	88 SF 786 SF 128 SF 1,224 SF 3,889 SF 6,117 SF
TOTAL EXISTING COVERAGE:	843 SF	6,453 SF	7,296 SF
APN: 093-051-011 (WILSON) LOT AREA: (LOT 8A) ALLOWABLE BASE COVERAGE: EXISTING COVERAGE:	0 SF	11,438 SF	11,438 SF
HARD: CABINET SHOP PAINT SHOP STORAGE SHED DIRT DRIVEWAY SUB-TOTAL	0 SF 0 SF 0 SF 0 SF 0 SF	3,733 SF 284 SF 510 SF 8,064 SF 9,772 SF	2,934 SF 284 SF 510 SF 8,064 SF 9,772 SF
SOFT: DIRT DRIVEWAY	0 SF	250 SF	250 SF
TOTAL EXISTING COVERAGE:	0 SF	10,022 SF	10,022 SF

ROAD EASEMENTS	CLASS 1	CLASS 5	TOTAL
ASPEN STREET (1/2 R.O.W.) LOT AREA: ALLOWABLE BASE COVERAGE: EXISTING COVERAGE:	5,098 SF	4,658 SF	9,756 SF
HARD: AC DRIVEWAY LPG TANKS SUB-TOTAL	519 SF 35 SF 554 SF	0 SF 0 SF 0 SF	519 SF 35 SF 554 SF
SOFT: CORRALS DIRT DRIVE/PARKING LUMBER SHED (REMOVED) SUB-TOTAL	0 SF 282 SF 0 SF 282 SF	812 SF 143 SF 251 SF 1,206 SF	812 SF 425 SF 251 SF 1,488 SF
TOTAL EXISTING COVERAGE:	636 SF	1,208 SF	2,042 SF
HILLCREST AVE (R.O.W.) LOT AREA: ALLOWABLE BASE COVERAGE: EXISTING COVERAGE:	4,020 SF	4,020 SF	8,040 SF
HARD: SHED AC DRIVE SUB-TOTAL	0 SF 0 SF 0 SF	1,496 SF 1,496 SF 1,507 SF	1,496 SF 1,496 SF 1,607 SF
SOFT: DIRT DRIVE/PARKING	1,548 SF	1,700 SF	3,248 SF
TOTAL EXISTING COVERAGE:	1,548 SF	3,207 SF	4,755 SF

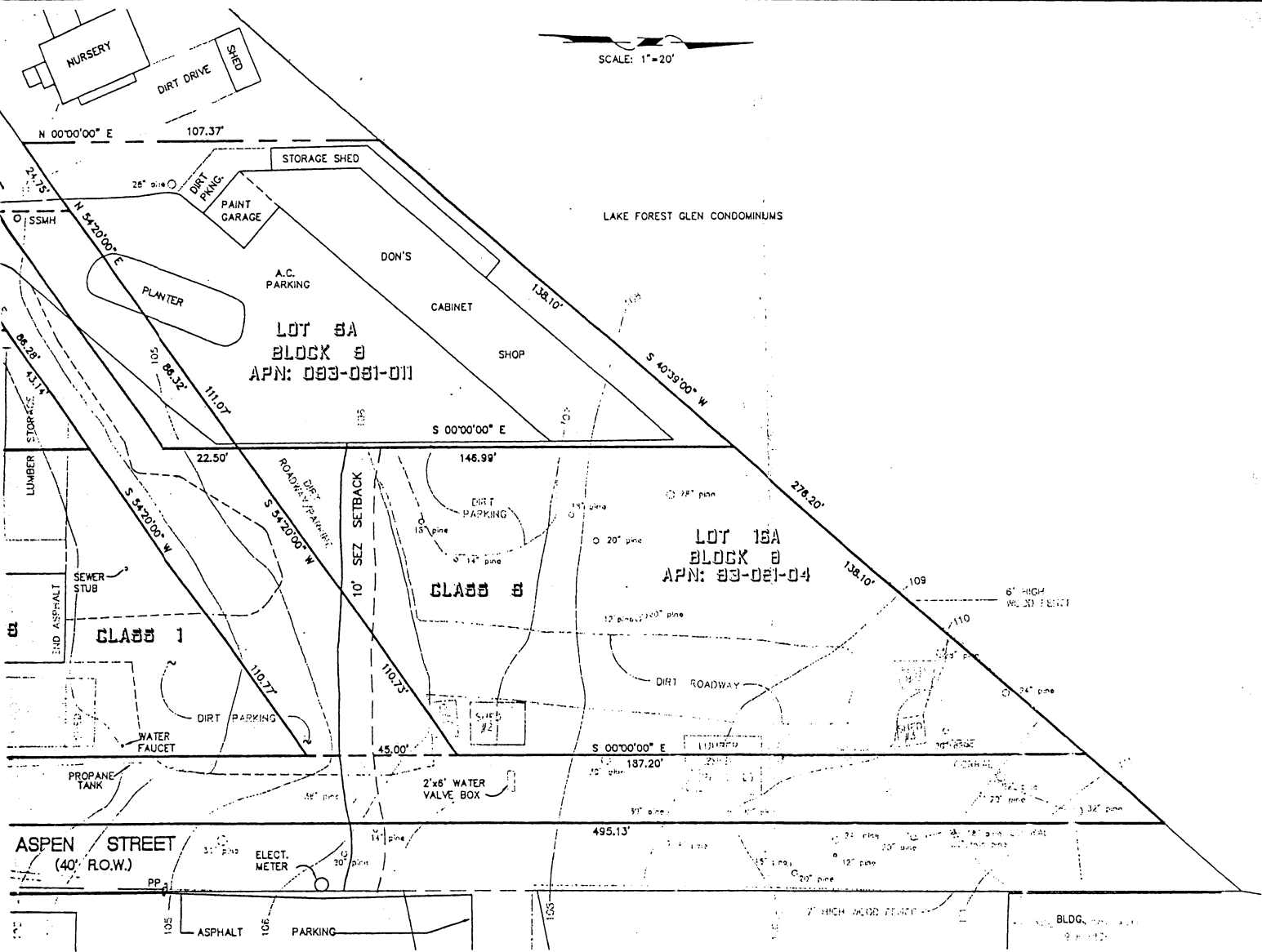
TOTAL PROJECT AREA = 79,461 SF  
 TOTAL ALLOWABLE COVERAGE = 10,853 SF  
 TOTAL EXISTING COVERAGE = 52,313 SF

DRAWN BY: FRANKIE DESIGN BY: JSB  
 CHECKED BY: JSB/MLB DWG: 735014A.DWG

REVISION	DATE	DESCRIPTION	APPROVED	DATE

**VAIL** ENGINEERS, PLANNERS, SURVEYORS  
 ENGINEERING CORPORATION  
 SACRAMENTO  
 918 528 3323  
 395 NORTH LAKE BLVD. TAHOE CITY, CA 96143

SCALE: 1"=20'



	CLASS 1	CLASS 5	TOTAL
AGE	5,098 SF 51 SF	4,658 SF 1,165 SF	9,756 SF 1,216 SF
AGE	519 SF 35 SF	0 SF 0 SF	519 SF 35 SF
AGE	554 SF 0 SF	0 SF 812 SF	554 SF 812 SF
AGE	282 SF 0 SF	143 SF 251 SF	425 SF 251 SF
AGE	262 SF 836 SF	1,208 SF 1,208 SF	1,488 SF 2,042 SF
AGE	3,184 SF 31 SF	4,020 SF 1,006 SF	7,204 SF 1,036 SF
AGE	0 SF 0 SF 0 SF	17 SF 1,498 SF 1,507 SF	11 SF 1,498 SF 1,507 SF
AGE	1,546 SF	1,700 SF	3,246 SF
AGE	1,546 SF	3,207 SF	4,753 SF

820  
120  
72  
952

116  
116  
116

**LEGEND**

- (FND.) 3/4" IRON PIPE, UNLESS OTHERWISE INDICATED
- (T) EXISTING TREE
- (R) RECORD INFORMATION AS PER D MAPS 32
- (C) CALCULATED

• 78,461 SF  
DRAGE = 10,863 SF  
AGE = 62,313 SF

STEPHANIE SNYDER

**VAIL ENGINEERS, PLANNERS, SURVEYORS**  
PUBLIC FINANCE  
SACRAMENTO 916 328 3323  
TAHOE CITY 916 583 3417  
395 NORTH LAKE BLVD. TAHOE CITY, CA 96145

APN's: 093-051-004, 011: 093-041-004, 005, 006 LAKE FOREST  
**TOPOGRAPHIC SURVEY**  
T.A.R.T. FACILITY  
PLACER COUNTY CALIFORNIA

DATE: SEPT. 1995  
SCALE: 1" = 20'

SHEET 2 OF 6  
D. NO. 7350.14A