

FOR SUBLEASE

3150 W LINCOLN AVE, SUITE 124
ANAHEIM, CA 92801

3150 W LINCOLN AVE, SUITE 124

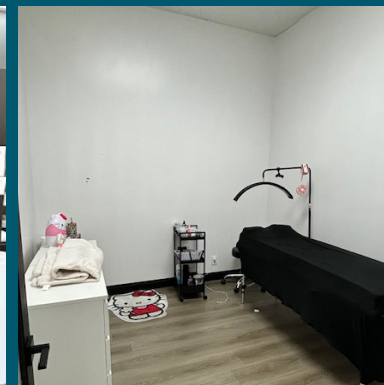
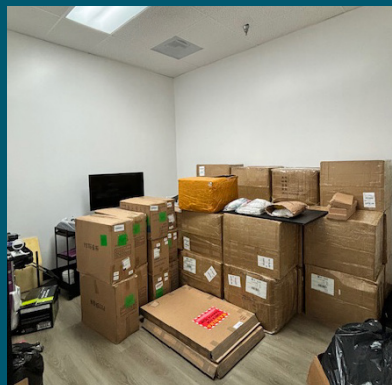
*±2,400 SF Retail Space Located in
Anaheim West Plaza*

Join Anaheim West Plaza tenants:
Subway, YourDentist, Mon Amour Banquet,
Aqua-Tots Swim School, and Panaderia

McDonalds and Del Taco across the street

Access from W Lincoln Ave and S Western Ave

Close to Cypress College, Knott's Berry Farm,
Beach Blvd, schools, neighborhoods, and parks



JIMMY KIM

949.557.5037 | jimmy.kim@kidder.com

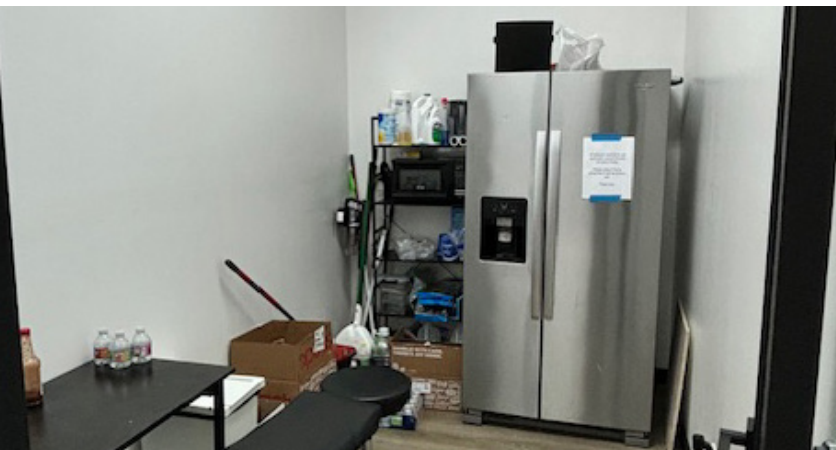
LIC N° 01992028

KIDDER.COM

This information supplied herein is from sources we deem reliable. It is provided without any representation, warranty, or guarantee, expressed or implied as to its accuracy. Prospective Buyer or Tenant should conduct an independent investigation and verification of all matters deemed to be material, including, but not limited to, statements of income and expenses. Consult your attorney, accountant, or other professional advisor. All Kidder Mathews designs are the sole property of Kidder Mathews. Branded materials and layouts are not authorized for use by any other firm or person.



FOR SUBLEASE | 3150 W LINCOLN AVE, SUITE 124, ANAHEIM, CA 92801

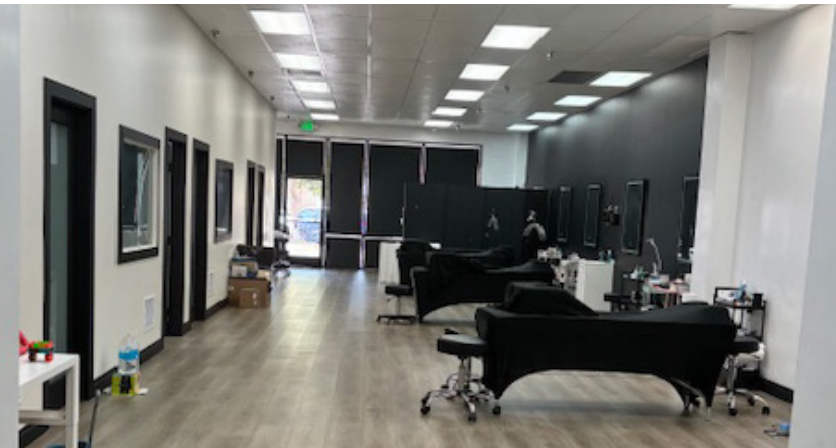


JIMMY KIM
Senior Vice President
949.557.5037
jimmy.kim@kidder.com
LIC N° 01992028

KIDDER.COM

This information supplied herein is from sources we deem reliable. It is provided without any representation, warranty, or guarantee, expressed or implied as to its accuracy. Prospective Buyer or Tenant should conduct an independent investigation and verification of all matters deemed to be material, including, but not limited to, statements of income and expenses. Consult your attorney, accountant, or other professional advisor.





JIMMY KIM
Senior Vice President
949.557.5037
jimmy.kim@kidder.com
LIC N° 01992028

KIDDER.COM

This information supplied herein is from sources we deem reliable. It is provided without any representation, warranty, or guarantee, expressed or implied as to its accuracy. Prospective Buyer or Tenant should conduct an independent investigation and verification of all matters deemed to be material, including, but not limited to, statements of income and expenses. Consult your attorney, accountant, or other professional advisor.



DEMOGRAPHICS

POPULATION

	1 Mile	3 Miles	5 Miles
2024 ESTIMATED	37,472	263,407	653,210
2029 PROJECTED	35,710	256,306	637,024
2020 CENSUS	38,160	268,735	668,276
PROJECTED GROWTH 2024 - 2029	-0.9%	-0.5%	-0.5%

MEDIAN AGE & GENDER

	1 Mile	3 Miles	5 Miles
MEDIAN AGE	37.9	37.2	38.3
% FEMALE	49.9%	50.4%	50.5%
% MALE	50.1%	49.6%	49.5%

HOUSEHOLDS

	1 Mile	3 Miles	5 Miles
2024 ESTIMATED	11,809	80,152	202,152
2028 PROJECTED	11,353	78,888	199,387
2020 CENSUS	11,932	80,362	202,687
PROJECTED GROWTH 2024 - 2029	-0.8%	-0.3%	-0.3%
OWNER-OCCUPIED	38.4%	49.7%	52.9%
RENTER-OCCUPIED	61.6%	50.3%	47.1%

INCOME

	1 Mile	3 Miles	5 Miles
2024 AVERAGE HH INCOME	\$105,175	\$126,427	\$129,947
2029 PROJECTED AVG HH INCOME	\$110,377	\$133,321	\$136,294
ANNUAL CHANGE 2024 - 2029	1.0%	1.1%	1.0%

EMPLOYMENT

	1 Mile	3 Miles	5 Miles
TOTAL BUSINESSES	774	9,037	24,662
TOTAL EMPLOYEES	5,449	85,715	225,204
WHITE COLLAR WORKERS	9,989	76,495	196,299
BLUE COLLAR WORKERS	7,658	55,402	130,902

EDUCATION

	1 Mile	3 Miles	5 Miles
SOME HIGH SCHOOL	8.7%	8.3%	7.7%
HIGH SCHOOL GRADUATE	25.6%	23.0%	21.9%
SOME COLLEGE	21.1%	20.2%	19.2%
ASSOCIATE DEGREE ONLY	7.2%	7.3%	7.7%
BACHELOR DEGREE ONLY	19.9%	21.5%	22.5%
GRADUATE DEGREE	6.5%	8.7%	10.3%

Data Source: Regis Online, ©2024, Sites USA, Chandler, Arizona, 480-491-1112 Demographic Source: Applied Geographic Solutions 5/2024, TIGER Geography - RFULL9

KIDDER.COM

This information supplied herein is from sources we deem reliable. It is provided without any representation, warranty, or guarantee, expressed or implied as to its accuracy. Prospective Buyer or Tenant should conduct an independent investigation and verification of all matters deemed to be material, including, but not limited to, statements of income and expenses. Consult your attorney, accountant, or other professional advisor.

