

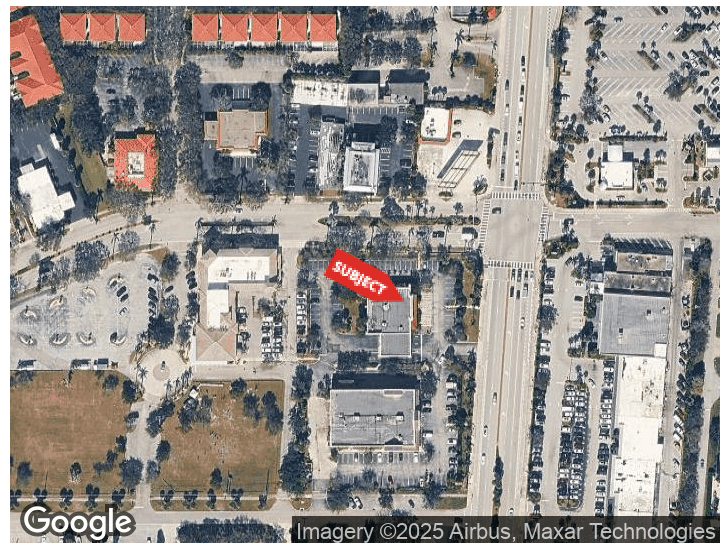


FREESTANDING COMMERCIAL BUILDING

150 TEQUESTA DRIVE
JUPITER, FLORIDA 33469

PROPERTY HIGHLIGHTS

- 6,100 SF freestanding retail/office building
- Delivered 100% vacant - ideal for owner-user or redevelopment
- Premier corner at US Highway 1 & Tequesta Drive
- Exceptional visibility, signage, and traffic counts
- Flexible layout suitable for retail, office, medical, or mixed use
- Ample on-site parking and easy access
- Located in a high-demand, supply-constrained Jupiter market



DEMOGRAPHICS 0.25 MILES 0.5 MILES 1 MILE

Total Households	308	1,467	4,445
Total Population	414	2,208	6,814
Average HH Income	\$57,714	\$70,020	\$80,215

For More Information

TYLER SLUMAN

Commercial Specialist

941 840 3954

tyler@americanpropertygroup.com

JUPITER, FL 33469



OFFERING SUMMARY

Sale Price:	\$5,900,000
Building Size:	6,100 SF
Lot Size:	1.4 Acres
Price / SF:	\$967.21
Year Built:	2004
Zoning:	MU

PROPERTY OVERVIEW

American Property Group of Sarasota Inc. presents 150 Tequesta Drive, Jupiter, FL

Property Type: Retail/Office Building

Building Size: 6,100 SF

Located at the highly visible intersection of US Highway 1 and Tequesta Drive, this premier former Bank of America building offers exceptional visibility, frontage, and long-term value in one of Jupiter's most sought-after commercial corridors.

The freestanding 6,100 SF retail/office building will be delivered fully vacant, making it an ideal opportunity for an owner-user, single-tenant re-use, multi-tenant configuration, or redevelopment. With strong traffic counts, excellent accessibility, and a prominent corner presence, this property offers rare flexibility in a supply-constrained coastal market.

TYLER SLUMAN

Commercial Specialist
941.840.3954
tyler@americanpropertygroup.com

**AMERICAN
PROPERTY GROUP**
OF SARASOTA, INC.

150 Tequesta Drive

JUPITER, FL 33469



Potential Concept



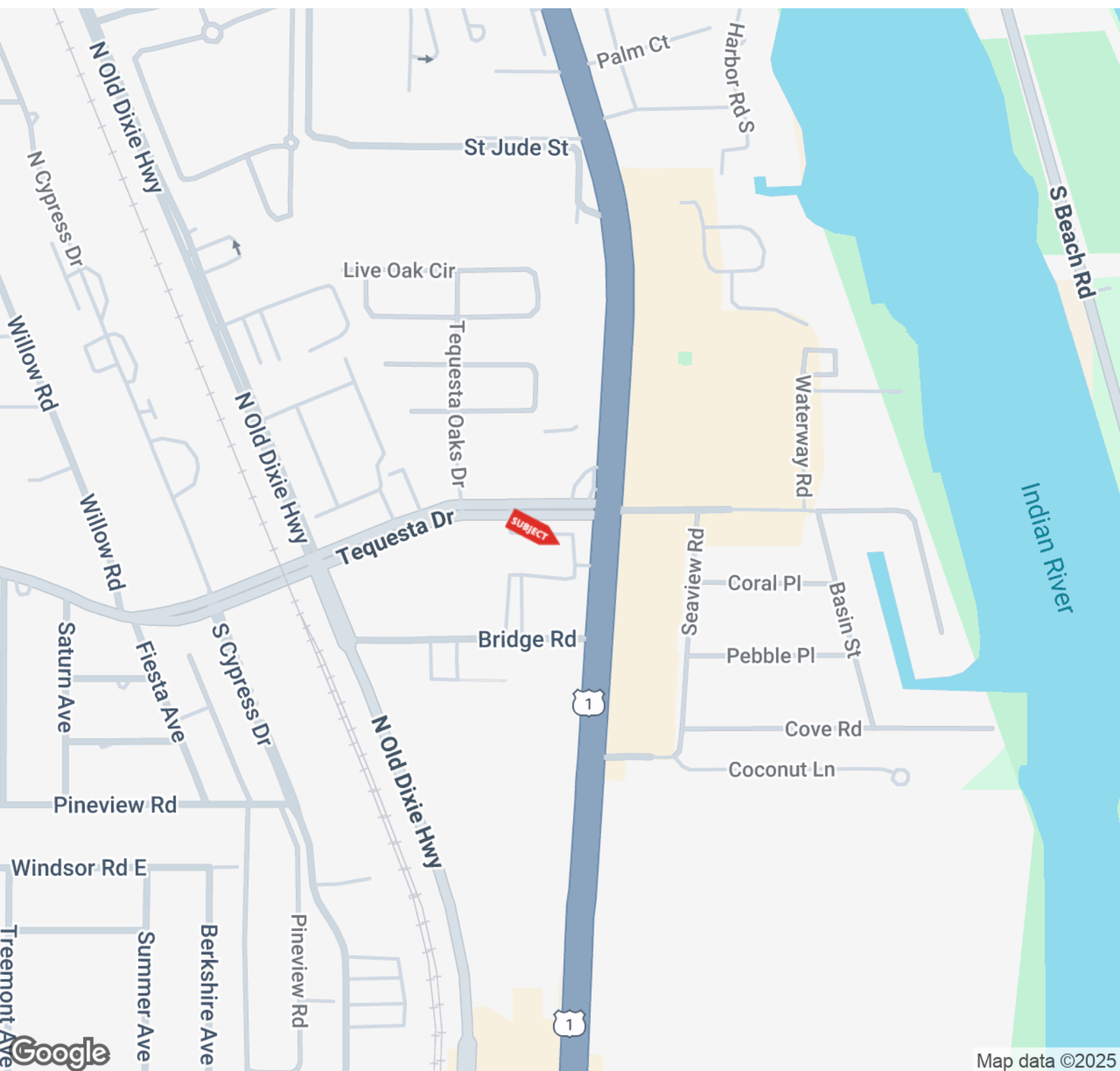
TYLER SLUMAN

Commercial Specialist
941.840.3954
tyler@americanpropertygroup.com

**AMERICAN
PROPERTY GROUP**
OF SARASOTA, INC.

150 Tequesta Drive

JUPITER, FL 33469

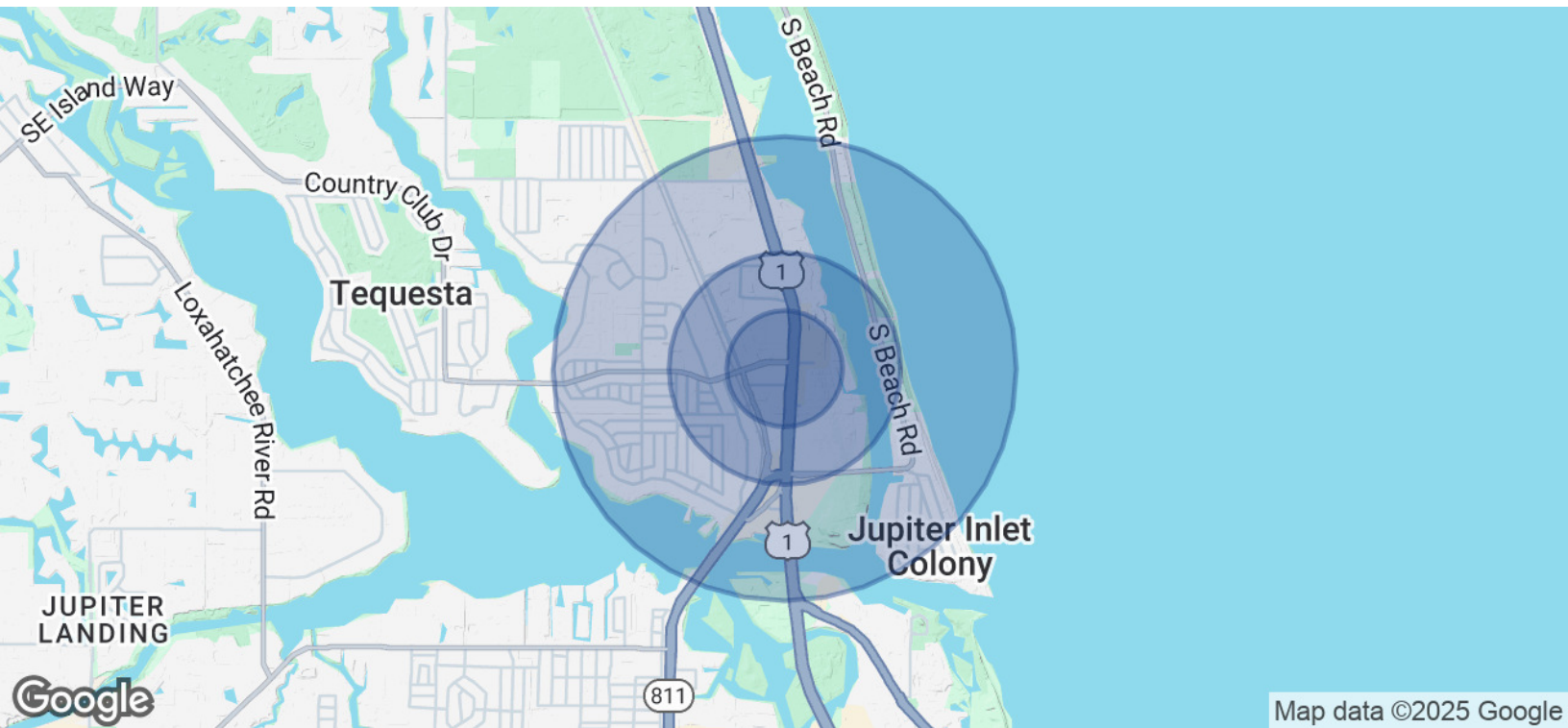


TYLER SLUMAN

Commercial Specialist
941.840.3954
tyler@americanpropertygroup.com

**AMERICAN
PROPERTY GROUP**
OF SARASOTA, INC.

JUPITER, FL 33469



POPULATION	0.25 MILES	0.5 MILES	1 MILE
Total Population	414	2,208	6,814
Average Age	56.7	59.0	59.0
Average Age (Male)	59.1	59.9	59.3
Average Age (Female)	53.9	58.4	59.0

HOUSEHOLDS & INCOME	0.25 MILES	0.5 MILES	1 MILE
Total Households	308	1,467	4,445
# of Persons per HH	1.3	1.5	1.5
Average HH Income	\$57,714	\$70,020	\$80,215
Average House Value	\$464,722	\$512,049	\$594,088

2020 American Community Survey (ACS)

TYLER SLUMAN
Commercial Specialist
941.840.3954
tyler@americanpropertygroup.com

**AMERICAN
PROPERTY GROUP**
OF SARASOTA, INC.