

22480 KELLY ROAD
EASTPOINTE, MICHIGAN

OFFICE FOR SALE
5,676 Square Foot Building



**SIGNATURE
ASSOCIATES**
KNOW SIGNATURE | KNOW RESULTS

KEY LOCATION



PROPERTY FEATURES

- 5,676 square foot building for sale
- Spaces available for owner/user
- Visible and convenient office/medical building
- Close to 9 Mile and I-94 expressway
- Ample parking
- Flexible MU-1 zoning allows for office, medical and retail uses
- Sale Price: \$625,000 (\$110.11/sq. ft.)



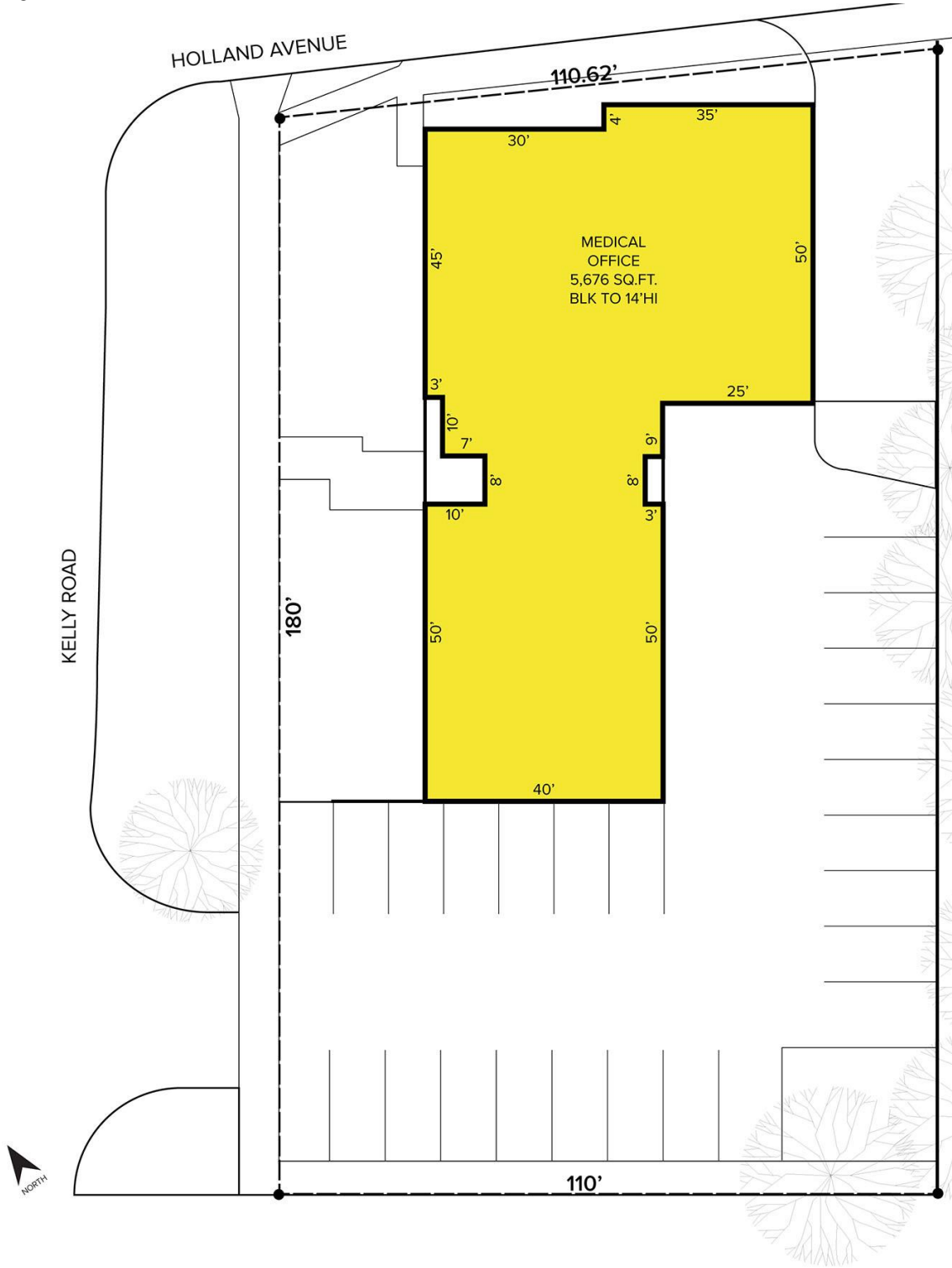
For more information, please contact:

CHRIS SECANTINE
(248) 799 3174
csecontine@signatureassociates.com

MARVIN PETROUS
(248) 359 0647
mpetrous@signatureassociates.com

SIGNATURE ASSOCIATES
One Towne Square, Suite 1200
Southfield, MI 48076
www.signatureassociates.com

Site Plan



For more information, please contact:

CHRIS SECANTINE
(248) 799 3174
csecontine@signatureassociates.com

MARVIN PETROUS
(248) 359 0647
mpetrous@signatureassociates.com

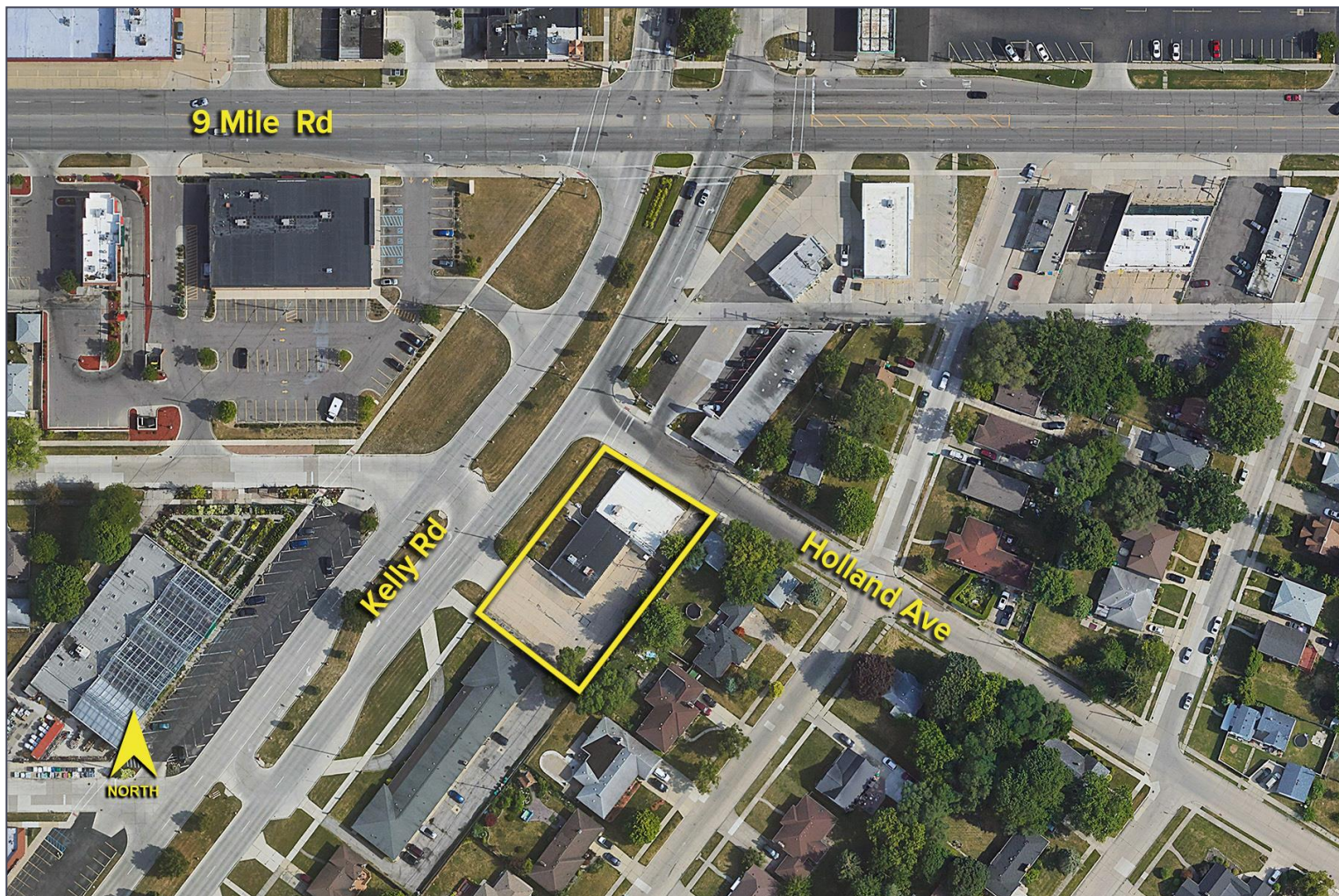
SIGNATURE ASSOCIATES
One Towne Square, Suite 1200
Southfield, MI 48076
www.signatureassociates.com

22480 Kelly Road – Eastpointe, Michigan

Office For Sale

5,676
Square Foot
BUILDING

Aerial



For more information, please contact:

CHRIS SECONTINE
(248) 799 3174
csecontine@signatureassociates.com

MARVIN PETROUS
(248) 359 0647
mpetrous@signatureassociates.com

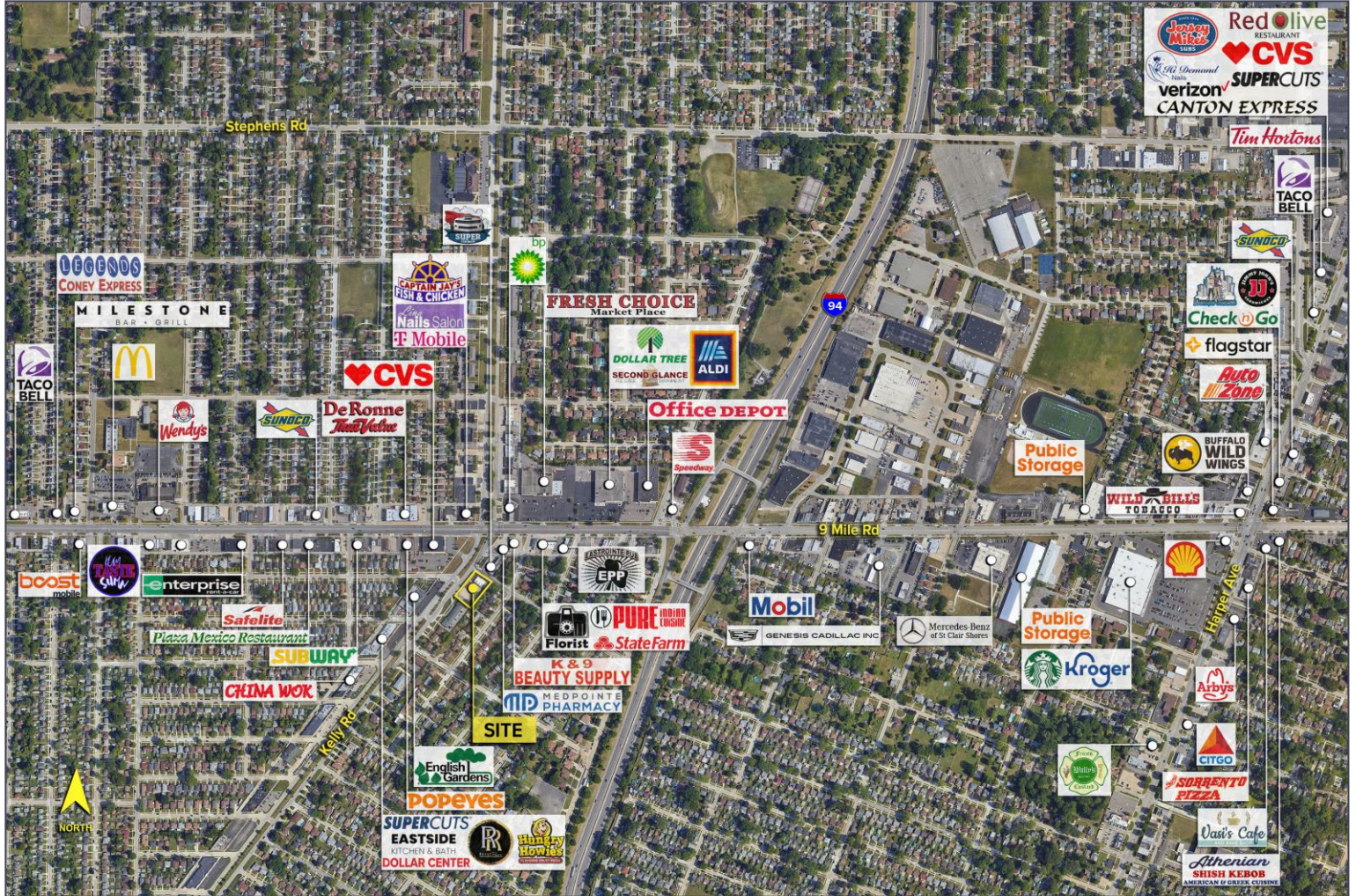
SIGNATURE ASSOCIATES
One Towne Square, Suite 1200
Southfield, MI 48076
www.signatureassociates.com

22480 Kelly Road – Eastpointe, Michigan

Office For Sale

5,676
Square Foot
BUILDING

Surrounding Businesses



For more information, please contact:

CHRIS SECONTINE
(248) 799 3174
csecontine@signatureassociates.com

MARVIN PETROUS
(248) 359 0647
mpetrous@signatureassociates.com

SIGNATURE ASSOCIATES
One Towne Square, Suite 1200
Southfield, MI 48076
www.signatureassociates.com