

FOR LEASE

EXCESS OFFICE SPACE

627 E MAIN ST SE
CALEDONIA, MICHIGAN 49316



PROPERTY OVERVIEW

- + Available Spaces:
 - 1st Floor: 4,000 SF
 - 2nd Floor: 4,035 SF
- + Executive Suites Available
- + Year Built: 1976
- + Zoning: Commercial



CONTACT US

NATE SCHERPENISSE

Vice President
+1 616 581 2434
nate.scherpenisse@cbre.com

www.cbre.us/grandrapids

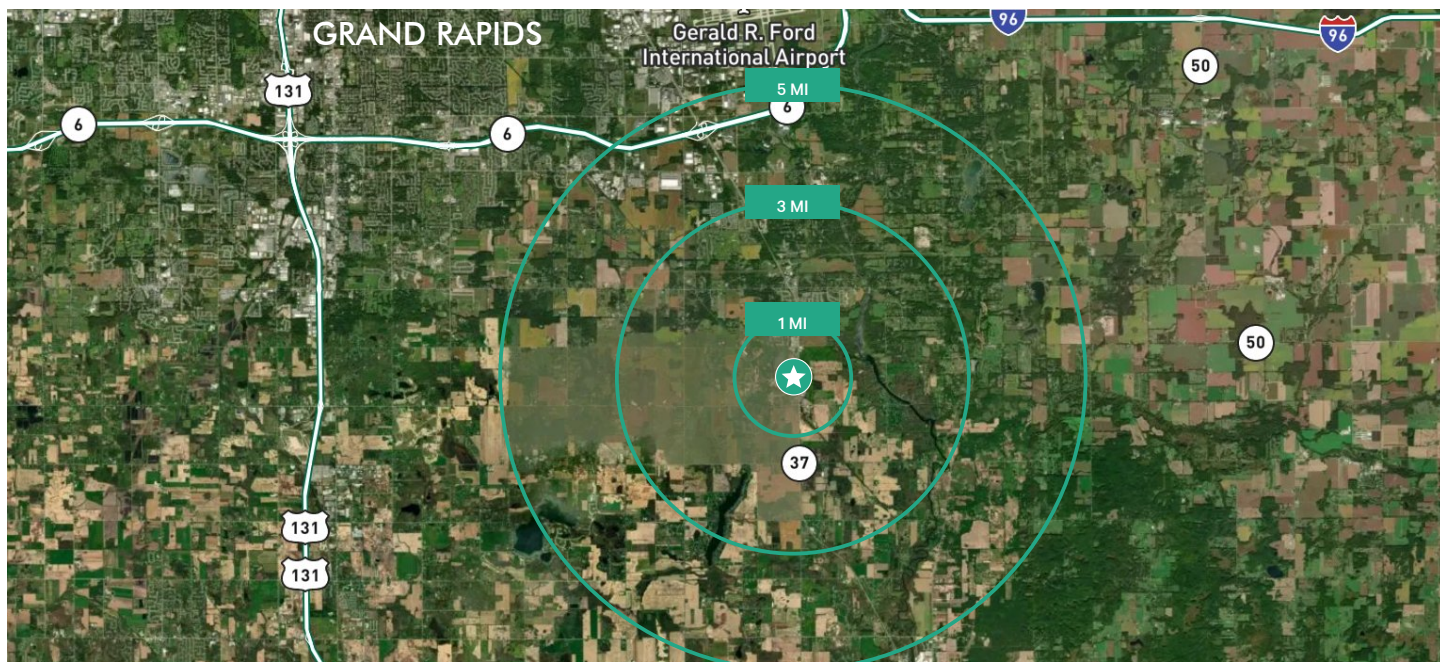
CBRE

FOR LEASE OFFICE SUITES

627 E MAIN ST SE
CALEDONIA, MICHIGAN 49316



AERIAL MAP



PROPERTY HIGHLIGHTS

- + Nicely finished office space with perimeter private offices and open office area
- + Access: Ingress and egress from both E Main St SE & Emmons St SE
- + Visibility: Easily visible from E Main St SE & Emmons St SE

2021 DEMOGRAPHICS

	1 Mile	3 Miles	5 Miles
Total Population	2,715	10,816	24,101
Daytime Population	2,974	8,849	22,782
Avg HH Income	\$103,191	\$124,081	\$124,081
Median HH Income	\$89,230	\$102,085	\$101,045
Median Home Value	\$268,568	\$315,994	\$311,159

© 2021 CBRE, Inc. All rights reserved. This information has been obtained from sources believed reliable, but has not been verified for accuracy or completeness. You should conduct a careful, independent investigation of the property and verify all information. Any reliance on this information is solely at your own risk. CBRE and the CBRE logo are service marks of CBRE, Inc. All other marks displayed on this document are the property of their respective owners, and the use of such logos does not imply any affiliation with or endorsement of CBRE. Photos herein are the property of their respective owners. Use of these images without the express written consent of the owner is prohibited.

www.cbre.us/grandrapids

CBRE

FOR LEASE
OFFICE SUITES

627 E MAIN ST SE
CALEDONIA, MICHIGAN 49316



PROPERTY PHOTOS



FOR LEASE OFFICE SUITES

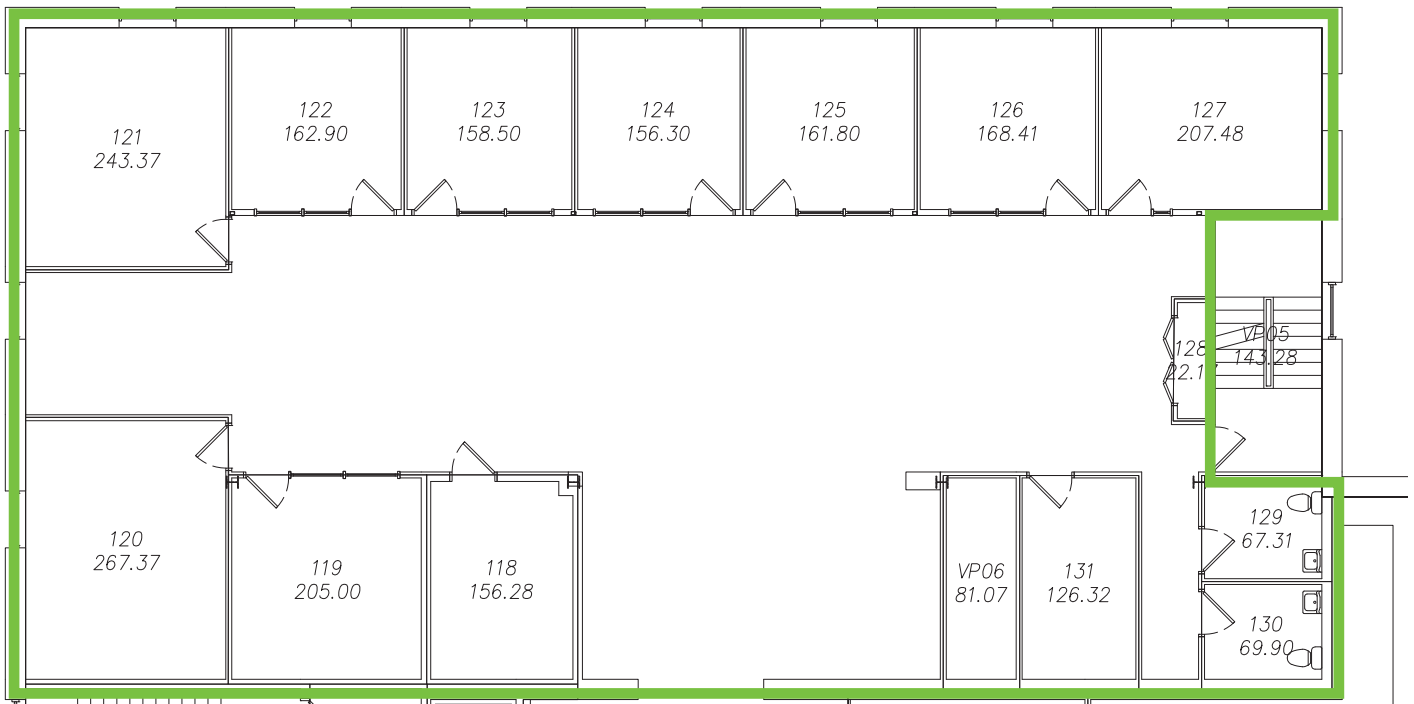
627 E MAIN ST SE
CALEDONIA, MICHIGAN 49316



OFFICE SUITES

FLOOR 1

- + 4,000 SF
- + \$15.00/SF Modified Gross with Tenant paying increases over base year



FOR LEASE OFFICE SUITES

627 E MAIN ST SE
CALEDONIA, MICHIGAN 49316



EXECUTIVE SUITES

FLOOR 2

- + 4,035 SF
- + \$15.00/SF Modified Gross with Tenant paying increases over base year
- + Individual Executive Suites available:
- + Lease structure is Modified Gross with Tenant paying increases over base year

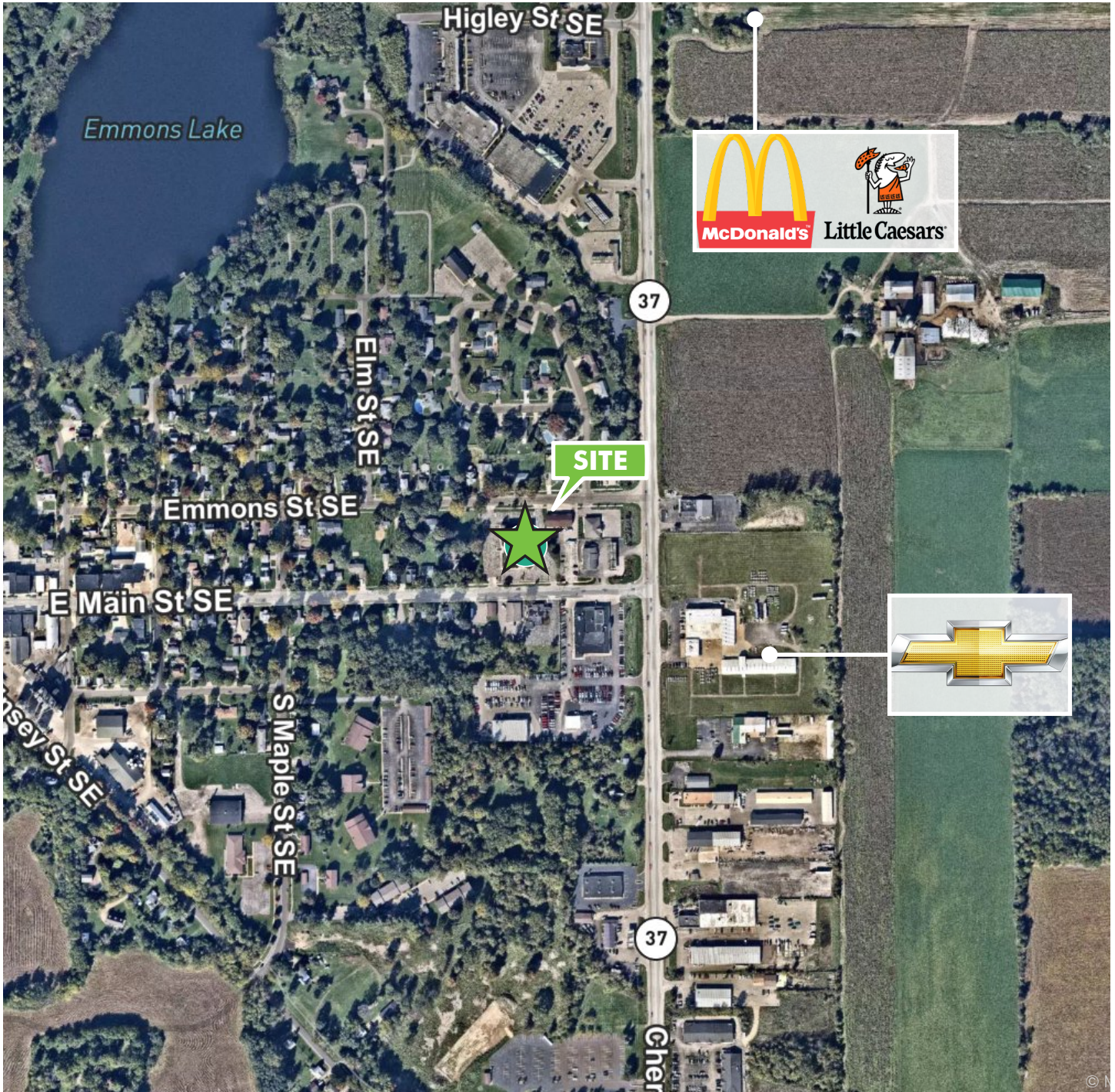


FOR LEASE
OFFICE SUITES

627 E MAIN ST SE
CALEDONIA, MICHIGAN 49316



TRADE AREA MAP



www.cbre.us/grandrapids

CBRE