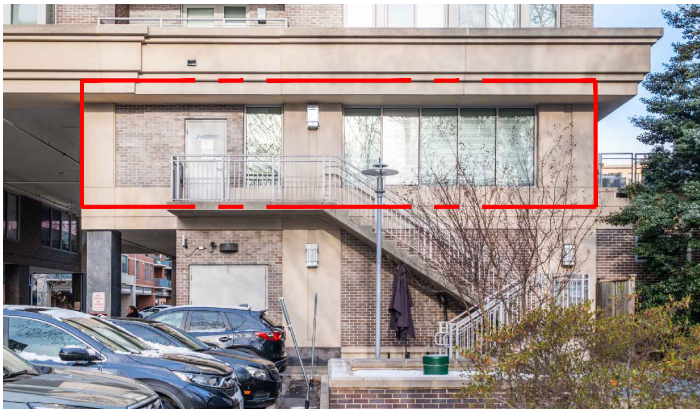


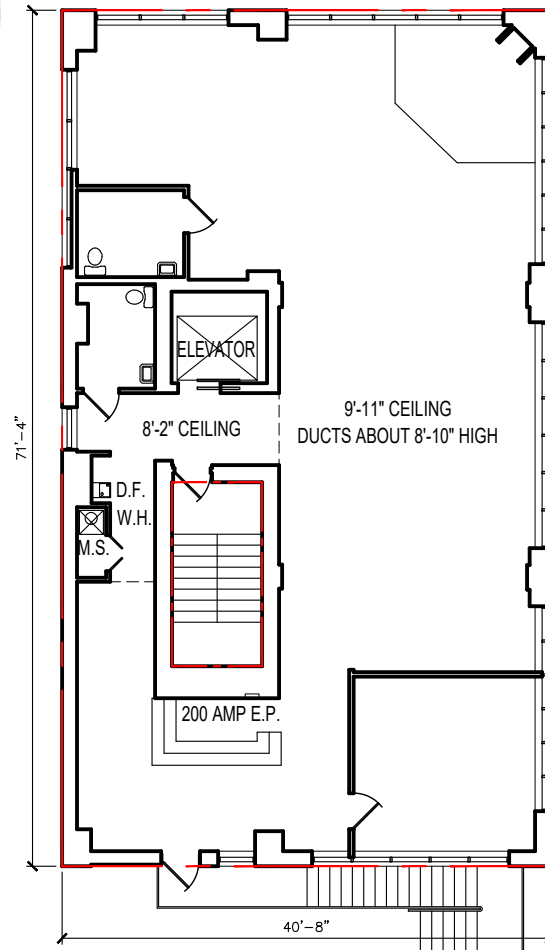
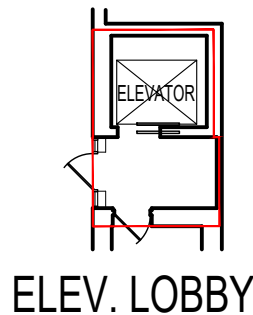
WEST PHOTO



SOUTH PHOTO



INTERIOR PHOTO



## FLOOR PLAN

SCALE:  $\frac{1}{16}" = 1'-0"$

513 W. BROAD ST.  
SUITE 230  
FALLS CHURCH, VA 22046

2nd FLOOR TENANT AREA  
INCLUDING PRIVATE ELEVATOR,  
BUT EXCLUDING SHARED STAIRS  
= 2,901 S.F.

1ST FLOOR LOBBY AND ELEVATOR  
= 169 S.F.

TOTAL BOMA AREA = 3,070 S.F.

For additional information,  
please contact:  
Treena Rinaldi  
703-927-3863  
treenarinaldi@aol.com  
or  
Mosi Shah  
703-217-6519  
msi76@aol.com

712 W. Broad St.  
Falls Church, VA 22046  
703-532-7704

**Korte**  
REALTY

DISCLAIMER: THIS INFORMATION HAS BEEN SECURED FROM SOURCES BELIEVED TO RELIABLE, BUT WE MAKE NO REPRESENTATIONS OR WARRANTIES, EXPRESSED OR IMPLIED AS TO THE ACCURACY OF THE INFORMATION. REFERENCES TO SQUARE FOOTAGE OR AGE ARE APPROXIMATE. BUYER MUST VERIFY THE INFORMATION AND ASSUMES ALL RISK FOR ANY INACCURACIES. ANY PROJECTIONS, OPINIONS, ASSUMPTIONS OR ESTIMATES USED HEREIN ARE FOR EXAMPLE PURPOSES AND DO NOT REPRESENT THE FUTURE OR PRESENT USE OF THE PROPERTY.