

SPACE FOR LEASE

# 685 STATE AVE/PA ROUTE 68

BEAVER (VANPORT TWP), PA 15009

## 2,400 SF AVAILABLE CLEAN SHOP/GARAGE SPACE

LOCATED ACROSS THE OHIO RIVER FROM THE  
SHELL PETROCHEMICAL PLANT



SHELL  
PETROCHEMICAL PLANT

2,400 SF FREESTANDING  
GARAGE/SHOP SPACE



### FOR MORE INFORMATION:

RICH GASPERINI  
rgasperini@genforrealestate.com  
D 412.564.0752 | C 412.651.6888

CONNOR JANGRO  
cjangro@genforrealestate.com  
D 412.564.0776 | C 412.805.7064

**GENFOR**  
REAL ESTATE

SPACE FOR LEASE

# 685 STATE AVE/PA ROUTE 68

## AVAILABLE SPACE SPECS

EXCELLENT ACCESS TO I-376 & SHELL CRACKER PLANT

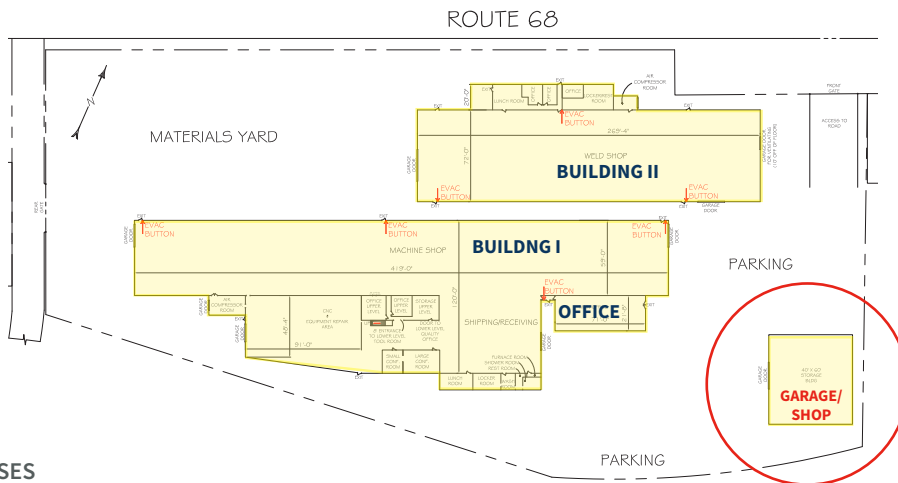
### FREESTANDING GARAGE/SHOP SPACE

BUILDING SF	2,400 SF Freestanding Building
BUILDING DIMENSIONS	60' x 40' Fully Functional, Free Span Space
POWER	400 AMP, Single-Phase; Separately Metered
LIGHTING	New LED Lighting
CLEAR HEIGHT	14'
LOADING	One (1) 12' x 12' Grade Level Door
FLOOR	New Floor
ZONING	I-Industrial
LOCATION	Located on Route 68 directly across the Ohio River from the Shell Petrochemical Plant in Vanport Township, Beaver County, Pennsylvania
HIGHWAY ACCESS	Immediate access to I-376 via Exit 38: PA 68 – Beaver, Midland

CLEAN, FREE SPAN SPACE



GRADE LEVEL, DRIVE-IN ACCESS



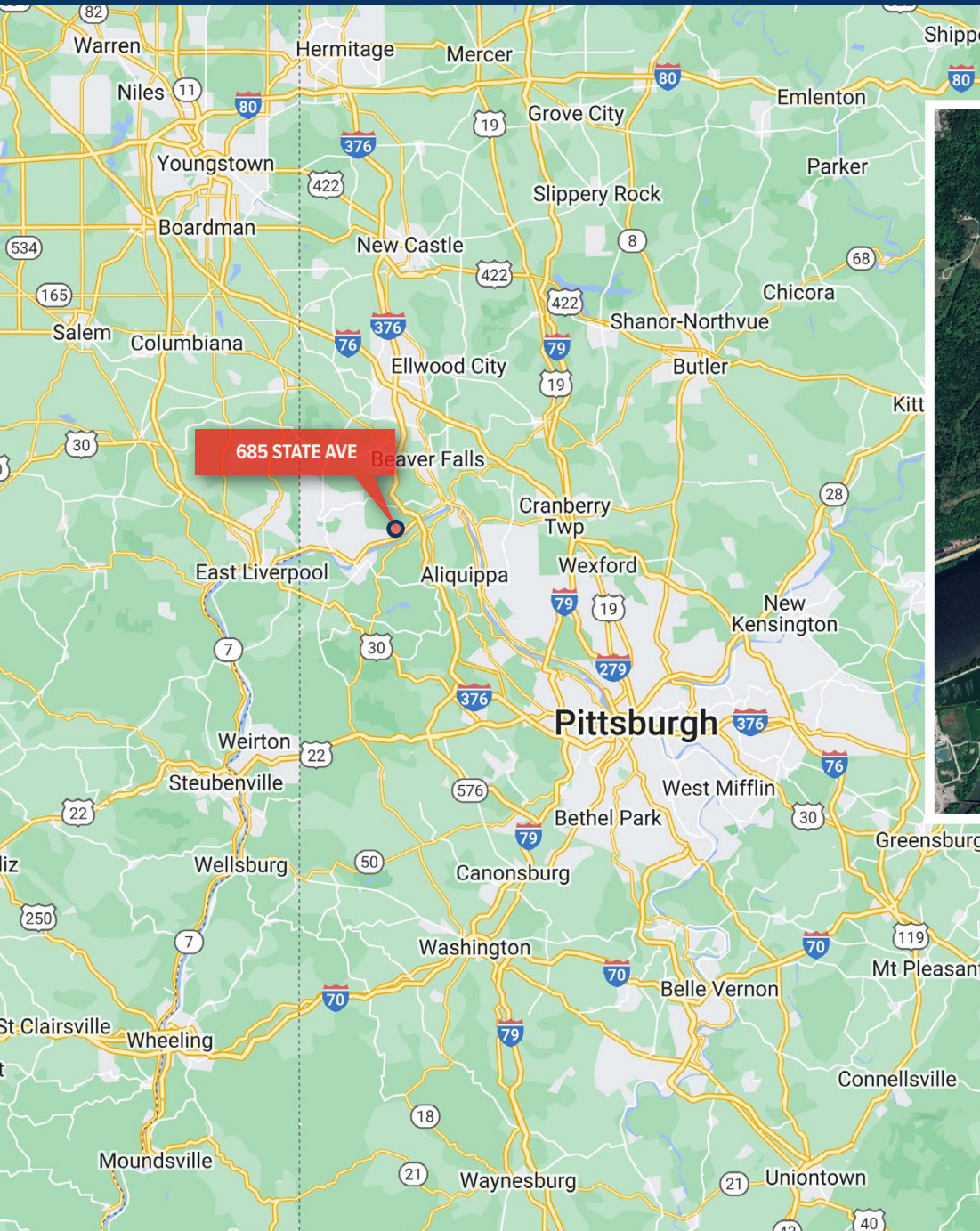
- PREMISES
- Building II
- Building I
- Office
- Garage/Shop - Available for Lease

SPACE FOR LEASE

# 685 STATE AVE/PA ROUTE 68

## LOCATION

EXCELLENT ACCESS TO I-376



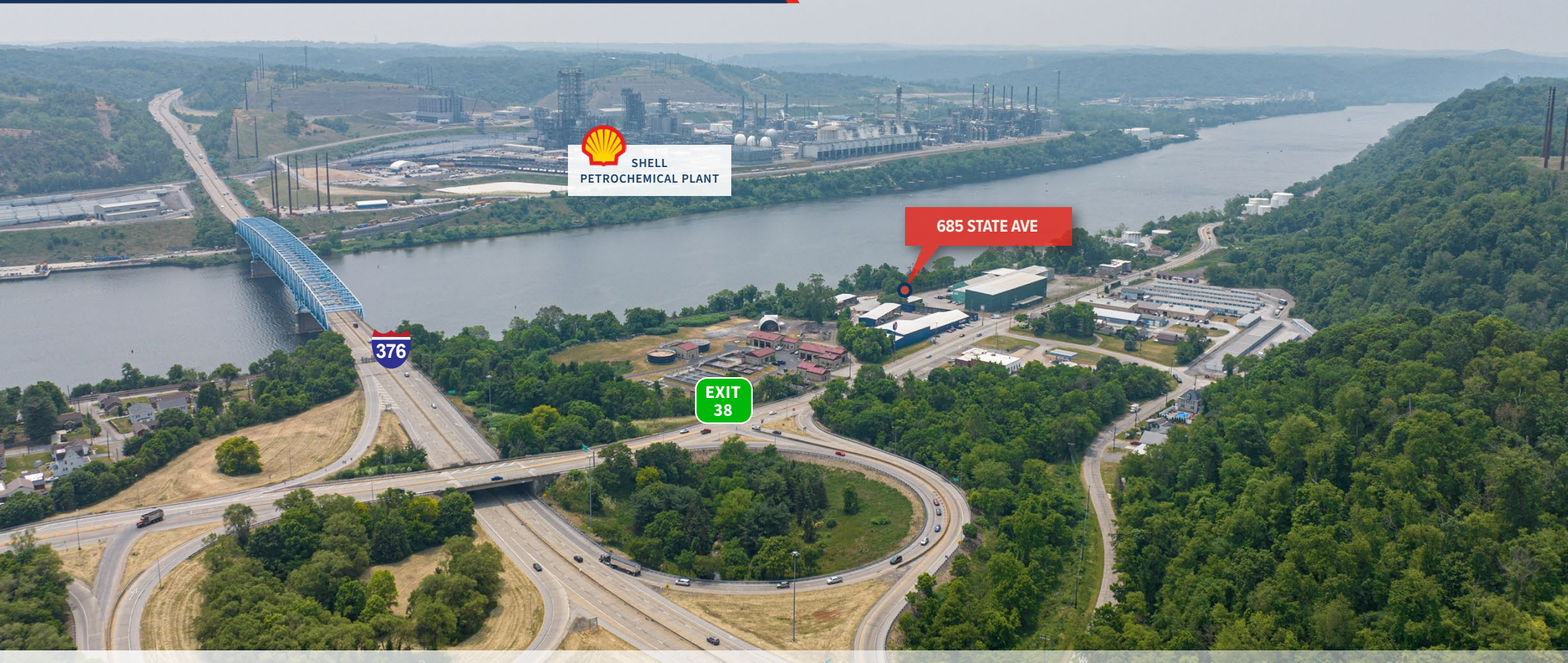
## LOCATION

I-376 (Beaver Valley Expressway)	Immediate access to I-376 via Exit 38: PA 68/Midland/Beaver
Shell Petrochemical Plant	Located directly across the Ohio River 6 minutes / 3 miles
I-76/PA Turnpike (Exit 26: Beaver Valley)	25 minutes / 18 miles
Pittsburgh International Airport	20 minutes / 15 miles
Downtown Pittsburgh	30 minutes / 21.7 miles

SPACE FOR LEASE

# 685 STATE AVE/PA ROUTE 68

BEAVER, PA 15009 | VANPORT TWP, BEAVER COUNTY



Please contact the leasing team for more information:

RICH GASPERINI  
rgasperini@genforrealestate.com  
D 412.564.0752 | C 412.651.6888

BRENDAN NOONE  
C 724.967.3574

CONNOR JANGRO  
cjangro@genforrealestate.com  
D 412.564.0776 | C 412.805.7064

GENFOR REAL ESTATE  
One Altoona Place, Suite 2A  
Pittsburgh, PA 15228  
Office: 412.564.0750  
www.genforrealestate.com

All information contained herein has been obtained from sources deemed reliable and Genfor, LLC does not doubt its accuracy; however, Genfor, LLC makes no guarantee, representation or warranty of any kind or nature, either express or limited, with respect to the accuracy or completeness of all or any portion of the information contained herein. Terms of availability of this property are subject to change and this property may be withdrawn without notice.

**GENFOR**  
REAL ESTATE