

# Medical Office Space Available

**Virtua Health & Wellness Center – Washington Township**  
239 Hurffville-Crosskeys Road, Sewell, NJ



**AVAILABLE SUITES RANGING FROM 1,100 – 10,000 SF**

## Property Highlights

- Class-A outpatient medical facility
- Comprised of various clinical uses including an ambulatory surgery center, urgent care, imaging, cancer center, and a variety of specialties
- Suites ranging from 1,100 – 10,000 SF
- Well capitalized ownership offering an above market tenant improvement allowance



For more information, please contact:

**Dan Moller**  
dmoller@geisrealty.com  
215.701.0722

**Tom Hummel**  
thummel@geisrealty.com  
215.568.2505

Owned &  
Managed By: **welltower**<sup>®</sup>

No warranty or representation, express or implied, is made as to the accuracy of the information contained herein, and the same is submitted subject to errors, omissions, change of price, rental or other conditions, prior sale, lease or financing, or withdrawal without notice, and of any special listing conditions imposed by our principals no warranties or representations are made as to the condition of the property or any hazards contained therein are any to be implied.

# Virtua Health & Wellness Center – Washington Township

239 Hurffville-Crosskeys Road, Sewell, NJ

## AVAILABLE SPACES

### First Floor

SUITE	SIZE	DESCRIPTION
Suite 105	4,431 SF	2nd generation space
Suite 115	1,963 SF	Retail or Class room space
Suite 120	2,010 SF	Former Child Care Space
Suite 150	5,084 SF	Fully customizable space. Currently in shell condition. With small retail pharmacy space

### Second Floor

SUITE	SIZE	DESCRIPTION
Suite 220	4,864 SF	Former Cardiac Rehab space
Suite 230	10,247 SF	Fully customizable space. Currently in shell condition.
Suite 235	2,031 SF	Former conference center
Suite 240	2,599 SF	Ready to go medical space
Suite 250	7,271 SF	Recently updated clinical space.
Suite 255	1,163 SF	Fully customizable space. Currently in shell condition.
Suite 270	3,887 SF	Fully customizable space. Currently in shell condition.



For more information, please contact:

**Dan Moller**

dmoller@geisrealty.com  
215.701.0722

**Tom Hummel**

thummel@geisrealty.com  
215.568.2505

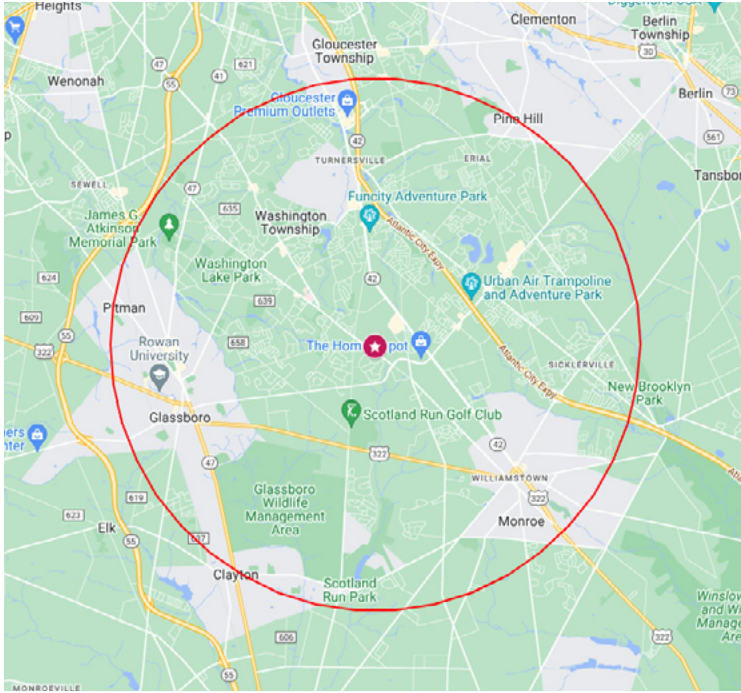
Owned &  
Managed By: The Welltower logo consists of the word 'welltower' in a blue, lowercase, sans-serif font. The 'w' is significantly larger and more prominent than the other letters.

# Virtua Health & Wellness Center – Washington Township

239 Hurffville-Crosskeys Road, Sewell, NJ

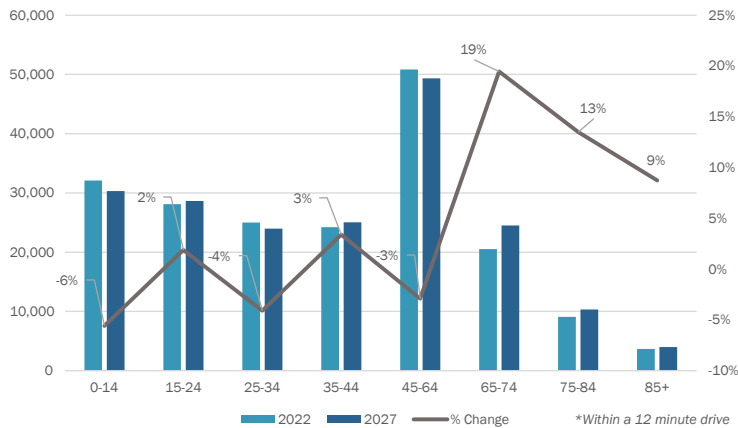
## Health Care Market Analysis

Welltower analyzed the market within a 5 mile radius of the property as shown on the map below.



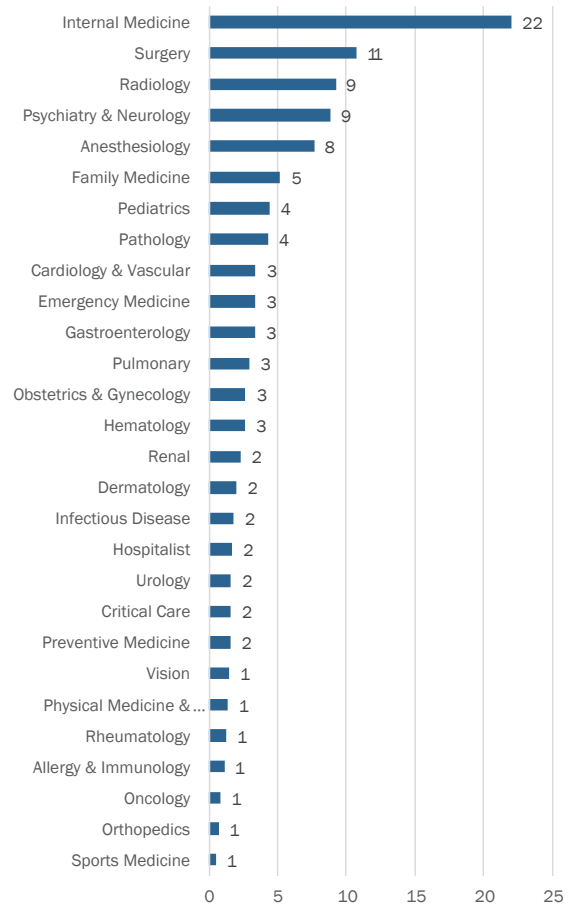
## Projected Population Shift

With the 45-64 age cohort representing the largest percentage of the total population (20%), the need for clinical services in this market will increase in future years.



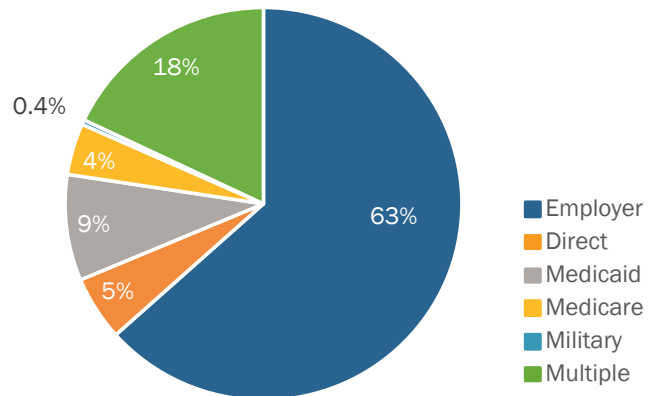
## Physician Need by Specialty

The graph below highlights the number of full-time physicians (FTE) for each specialty in need.



Source: Revista

## Payor Mix



For more information, please contact:

**Dan Moller**

dmoller@geisrealty.com  
215.701.0722

**Tom Hummel**

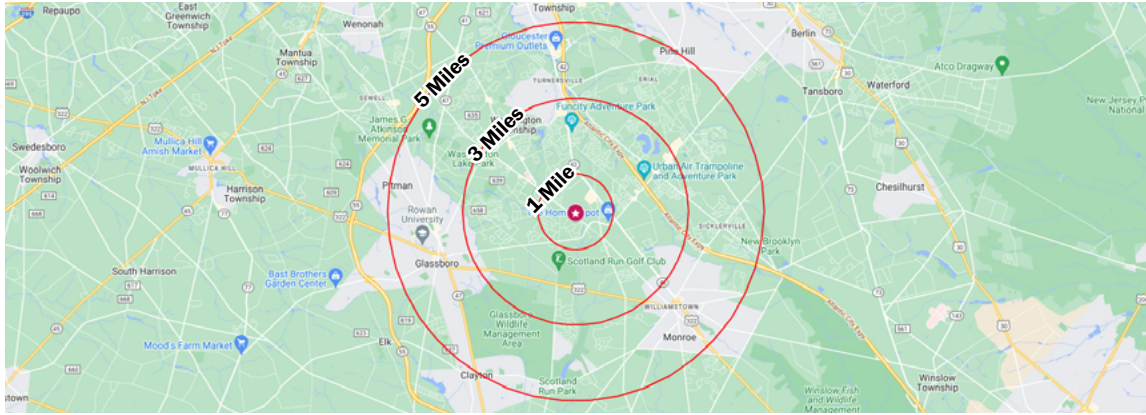
thummel@geisrealty.com  
215.568.2505

Owned & Managed By: **welltower**



# Virtua Health & Wellness Center – Washington Township

239 Hurffville-Crosskeys Road, Sewell, NJ



<b>POPULATION</b>	<b>1 MILE</b>	<b>3 MILES</b>	<b>5 MILES</b>
Total population	5,236	56,286	150,762
Median age	41.4	40.3	39.1
Median age (Male)	41.2	38.3	37.5
Median age (Female)	41.4	40.9	40.4
<b>HOUSEHOLDS &amp; INCOME</b>	<b>1 MILE</b>	<b>3 MILES</b>	<b>5 MILES</b>
Total households	2,007	21,264	56,901
# of persons per HH	2.6	2.6	2.6
Average HH income	\$120,420	\$105,463	\$98,560
Average house value	\$284,310	\$236,217	\$219,789
<b>ETHNICITY (%)</b>	<b>1 MILE</b>	<b>3 MILES</b>	<b>5 MILES</b>
Hispanic	6.1%	7.6%	8.1%
<b>RACE (%)</b>	<b>1 MILE</b>	<b>3 MILES</b>	<b>5 MILES</b>
White	84.5%	77.5%	72.0%
Black	10.1%	14.8%	18.3%
Asian	1.9%	2.5%	3.3%
Hawaiian	0.0%	0.0%	0.0%
American Indian	0.1%	0.3%	0.2%
Other	0.8%	1.5%	2.0%

\* Demographic data derived from 2020 ACS - US Census



For more information, please contact:

**Dan Moller**  
dmoller@geisrealty.com  
215.701.0722

**Tom Hummel**  
thummel@geisrealty.com  
215.568.2505



# Virtua Health & Wellness Center – Washington Township

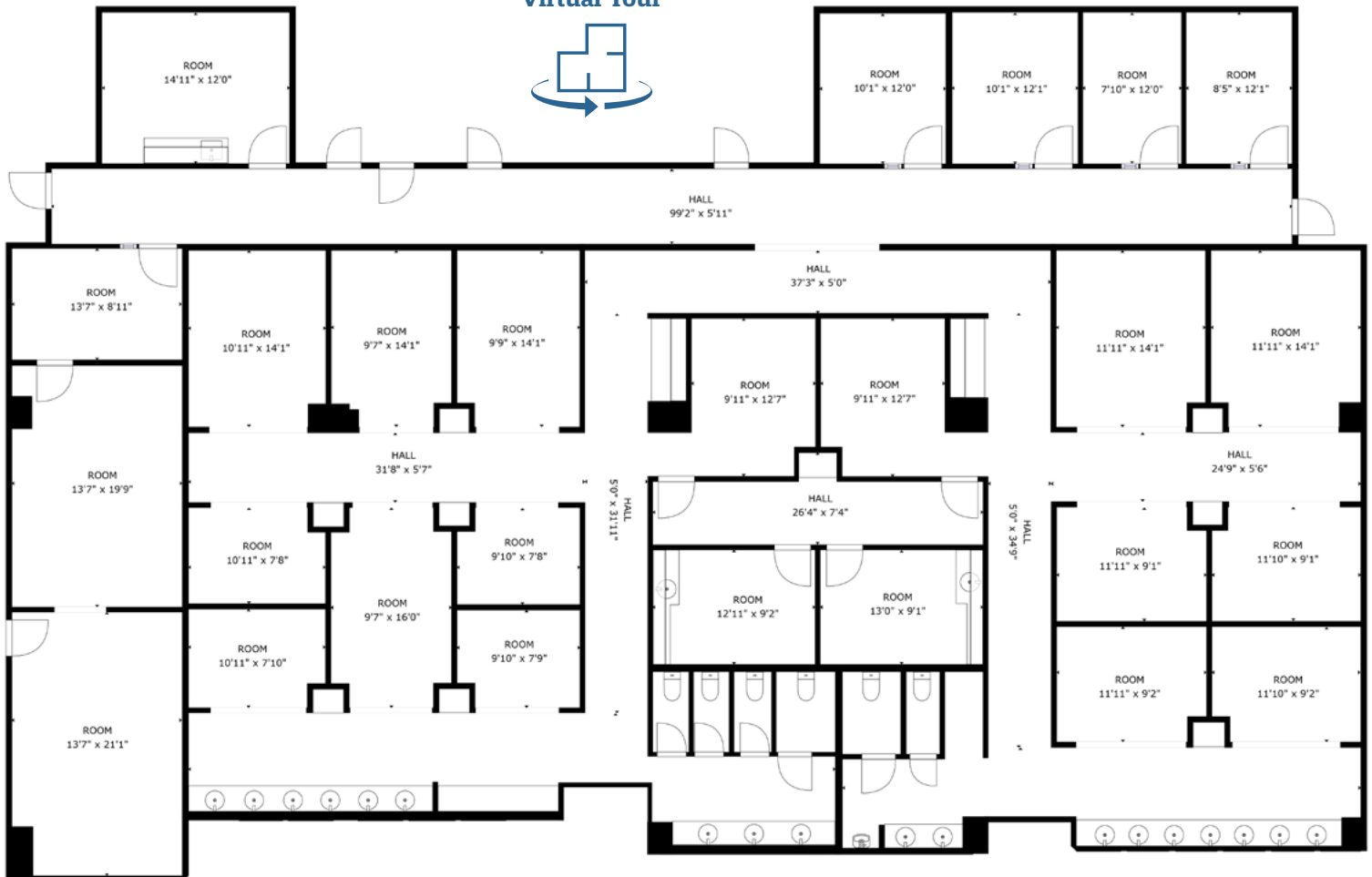
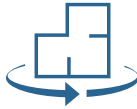
239 Hurffville-Crosskeys Road, Sewell, NJ

## AVAILABLE SPACES

### First Floor

SUITE	SIZE	DESCRIPTION
Suite 105	4,431 SF	2nd generation space

Virtual Tour



For more information, please contact:

**Dan Moller**  
dmoller@geisrealty.com  
215.701.0722

**Tom Hummel**  
thummel@geisrealty.com  
215.568.2505

Owned &  
Managed By: **welltower**

No warranty or representation, express or implied, is made as to the accuracy of the information contained herein, and the same is submitted subject to errors, omissions, change of price, rental or other conditions, prior sale, lease or financing, or withdrawal without notice, and of any special listing conditions imposed by our principals no warranties or representations are made as to the condition of the property or any hazards contained therein are any to be implied.

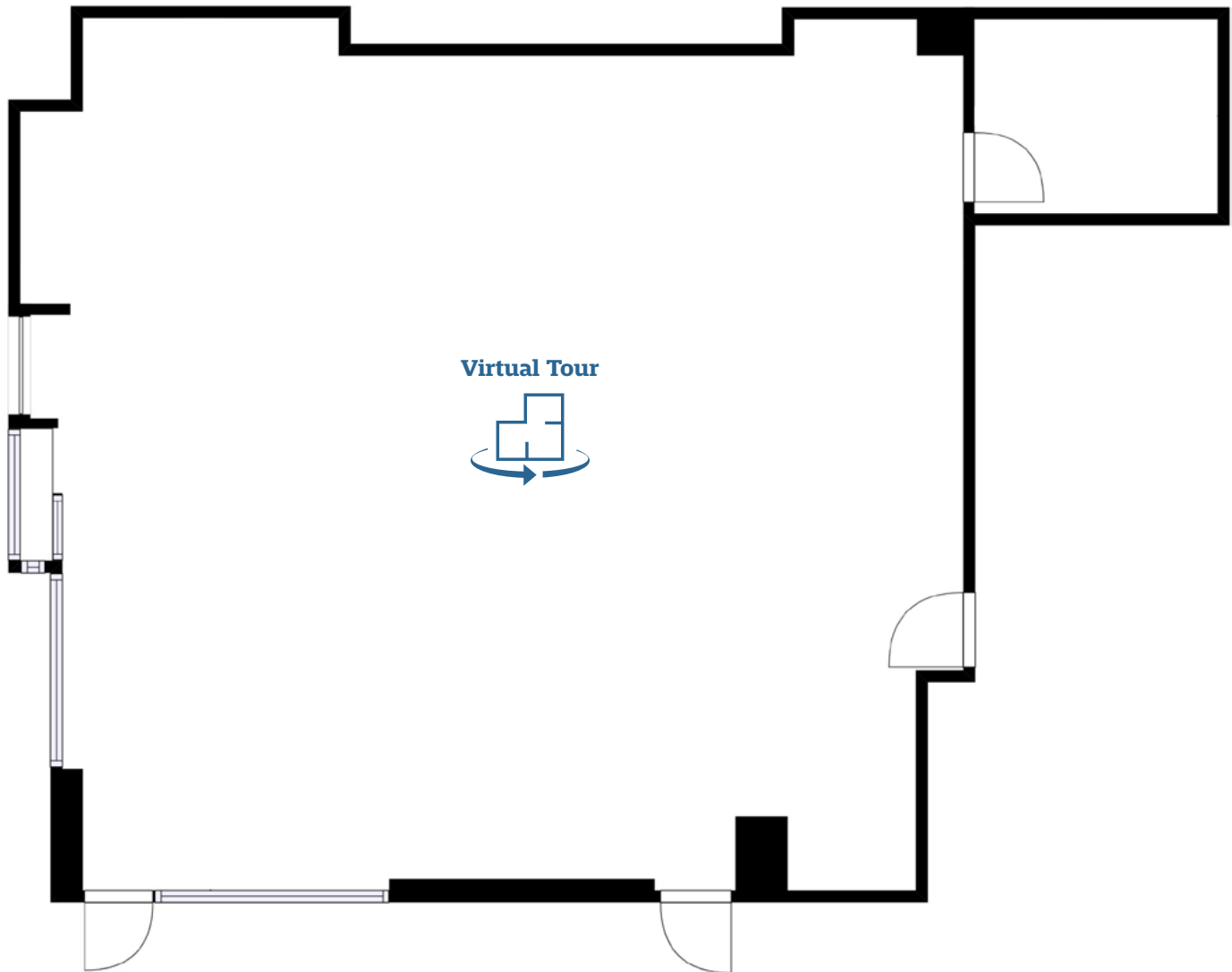
# Virtua Health & Wellness Center – Washington Township

239 Hurffville-Crosskeys Road, Sewell, NJ

## AVAILABLE SPACES

### First Floor

SUITE	SIZE	DESCRIPTION
Suite 115	1,963 SF	Fitness class space



For more information, please contact:

**Dan Moller**

dmoller@geisrealty.com  
215.701.0722

**Tom Hummel**

thummel@geisrealty.com  
215.568.2505

Owned &  
Managed By: **welltower**<sup>®</sup>

No warranty or representation, express or implied, is made as to the accuracy of the information contained herein, and the same is submitted subject to errors, omissions, change of price, rental or other conditions, prior sale, lease or financing, or withdrawal without notice, and of any special listing conditions imposed by our principals no warranties or representations are made as to the condition of the property or any hazards contained therein are any to be implied.

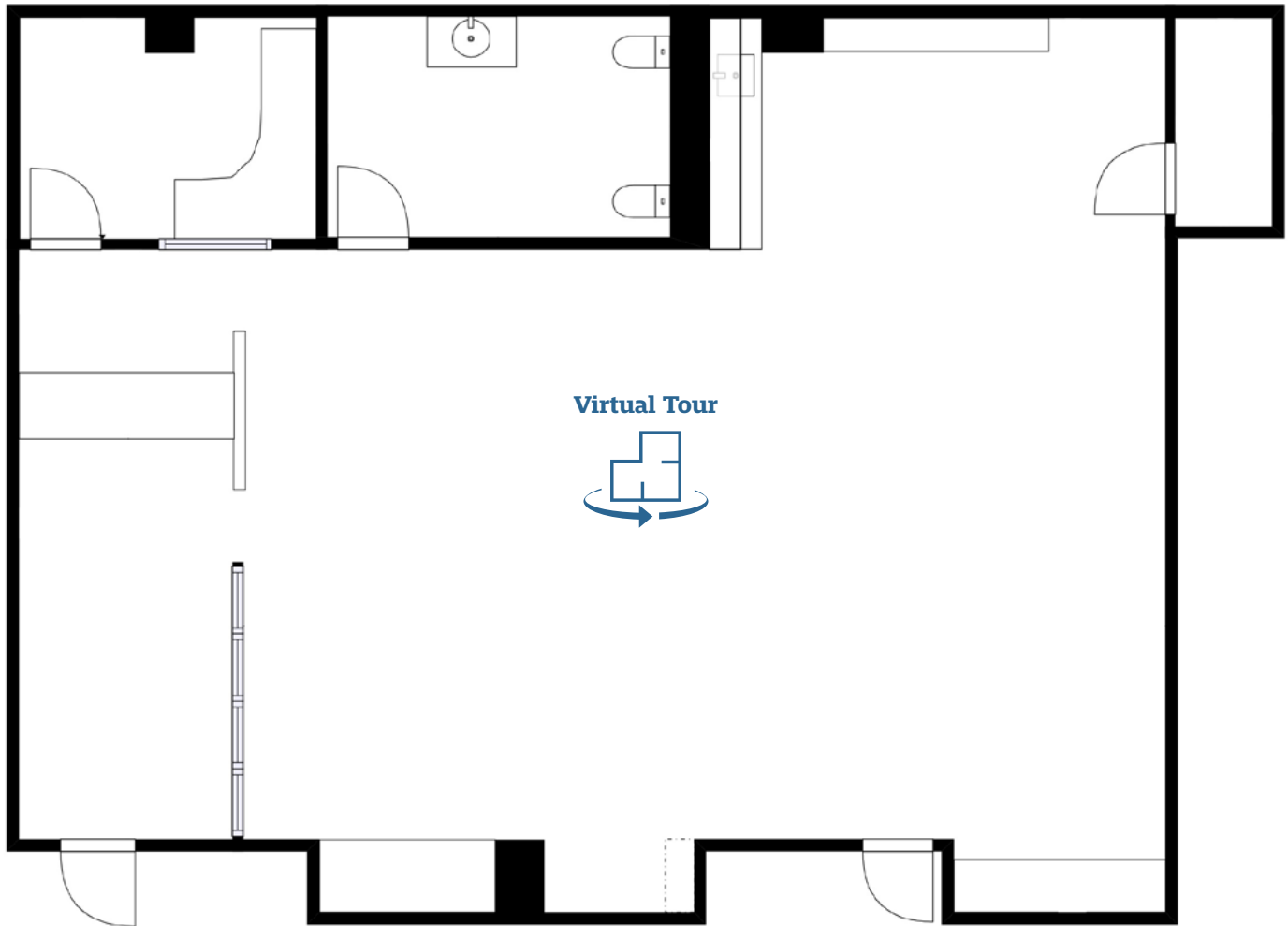
# Virtua Health & Wellness Center – Washington Township

239 Hurffville-Crosskeys Road, Sewell, NJ

## AVAILABLE SPACES

### First Floor

SUITE	SIZE	DESCRIPTION
Suite 120	2,010 SF	Former Child Care Space



For more information, please contact:

**Dan Moller**

dmoller@geisrealty.com  
215.701.0722

**Tom Hummel**

thummel@geisrealty.com  
215.568.2505

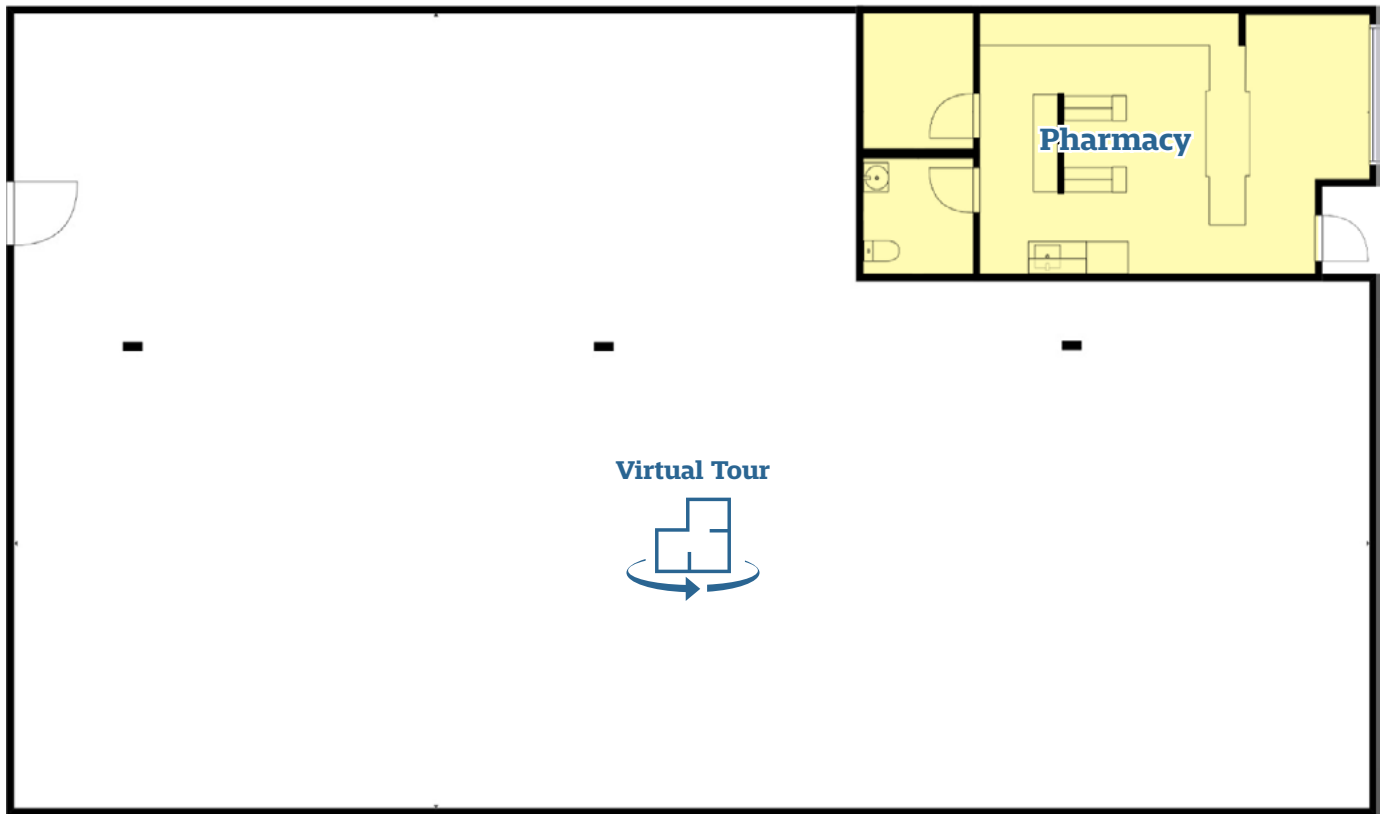
Owned &  
Managed By: **welltower**<sup>®</sup>

No warranty or representation, express or implied, is made as to the accuracy of the information contained herein, and the same is submitted subject to errors, omissions, change of price, rental or other conditions, prior sale, lease or financing, or withdrawal without notice, and of any special listing conditions imposed by our principals no warranties or representations are made as to the condition of the property or any hazards contained therein are any to be implied.

## AVAILABLE SPACES

### First Floor

SUITE	SIZE	DESCRIPTION
Suite 150	5,084 SF	Fully customizable space. Currently in shell condition. With small retail pharmacy space





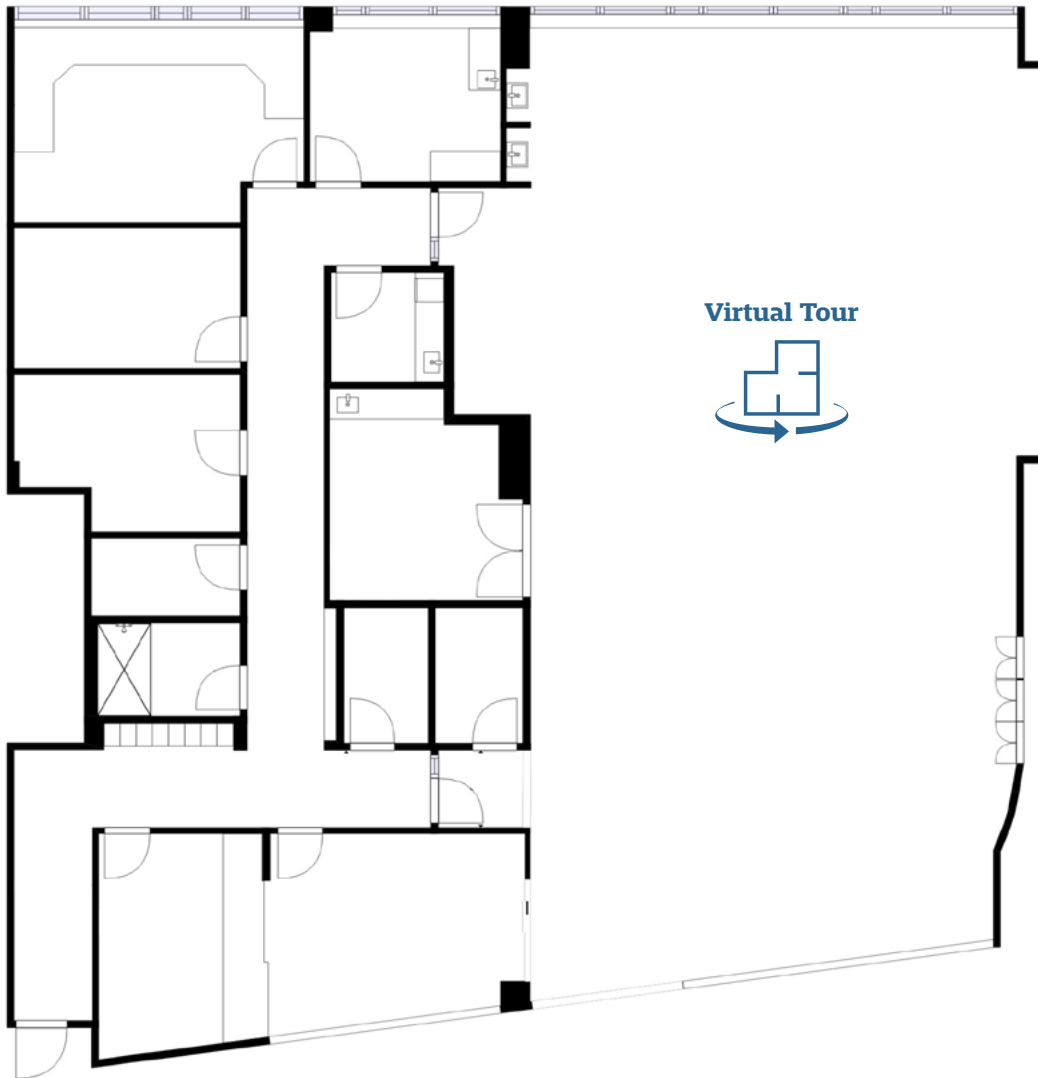
# Virtua Health & Wellness Center – Washington Township

239 Hurffville-Crosskeys Road, Sewell, NJ

## AVAILABLE SPACES

### Second Floor

SUITE	SIZE	DESCRIPTION
Suite 220	4,864 SF	Former Cardiac Rehab space



For more information, please contact:

**Dan Moller**

dmoller@geisrealty.com  
215.701.0722

**Tom Hummel**

thummel@geisrealty.com  
215.568.2505

Owned &  
Managed By: **welltower**<sup>®</sup>

No warranty or representation, express or implied, is made as to the accuracy of the information contained herein, and the same is submitted subject to errors, omissions, change of price, rental or other conditions, prior sale, lease or financing, or withdrawal without notice, and of any special listing conditions imposed by our principals no warranties or representations are made as to the condition of the property or any hazards contained therein are any to be implied.

# Virtua Health & Wellness Center – Washington Township

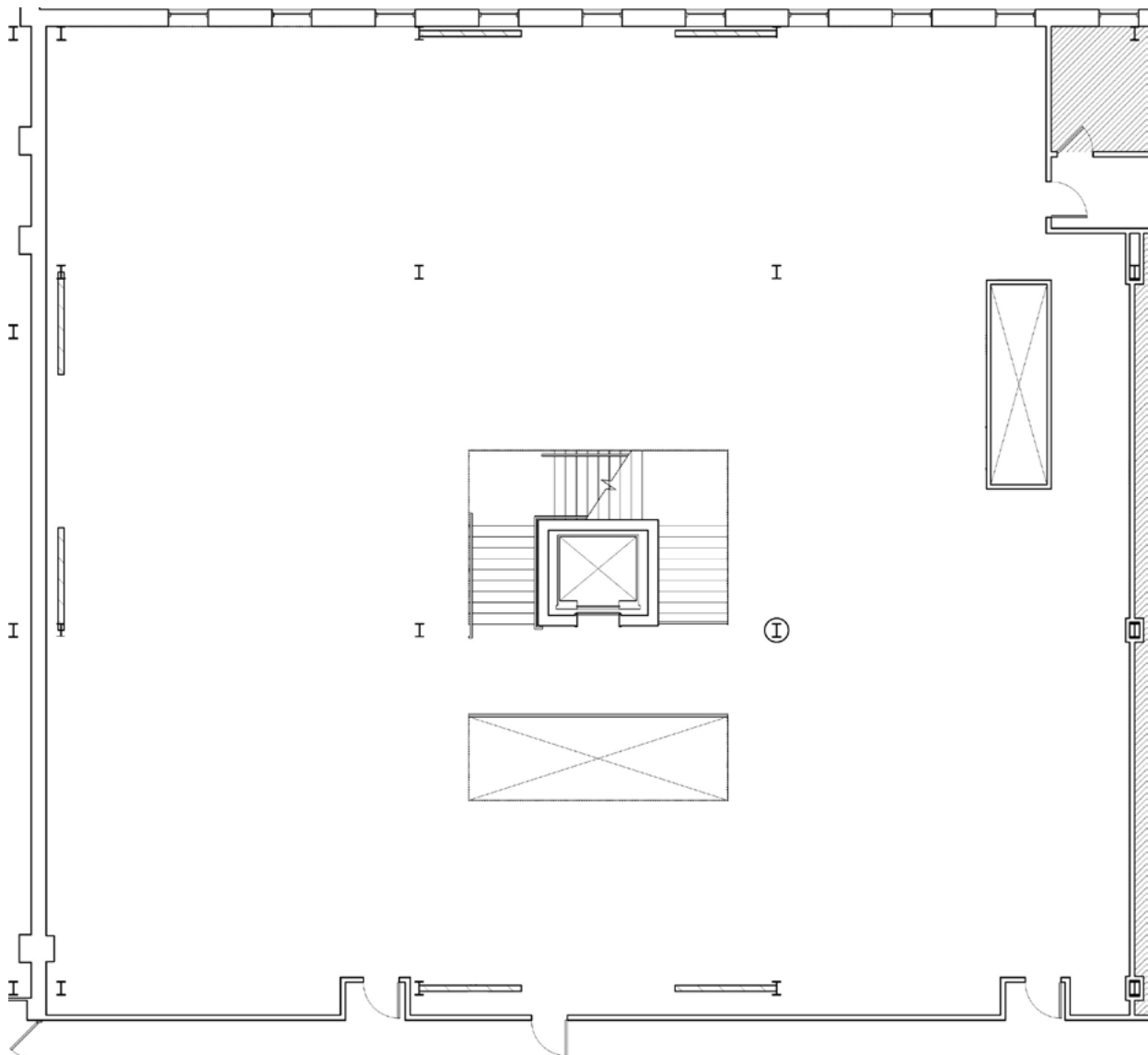
239 Hurffville-Crosskeys Road, Sewell, NJ

## AVAILABLE SPACES

### Second Floor

SUITE	SIZE	DESCRIPTION
-------	------	-------------

Suite 230	10,247 SF	Fully customizable space. Currently in shell condition.
-----------	-----------	---



For more information, please contact:

**Dan Moller**

dmoller@geisrealty.com  
215.701.0722

**Tom Hummel**

thummel@geisrealty.com  
215.568.2505

Owned &  
Managed By: **welltower**<sup>®</sup>

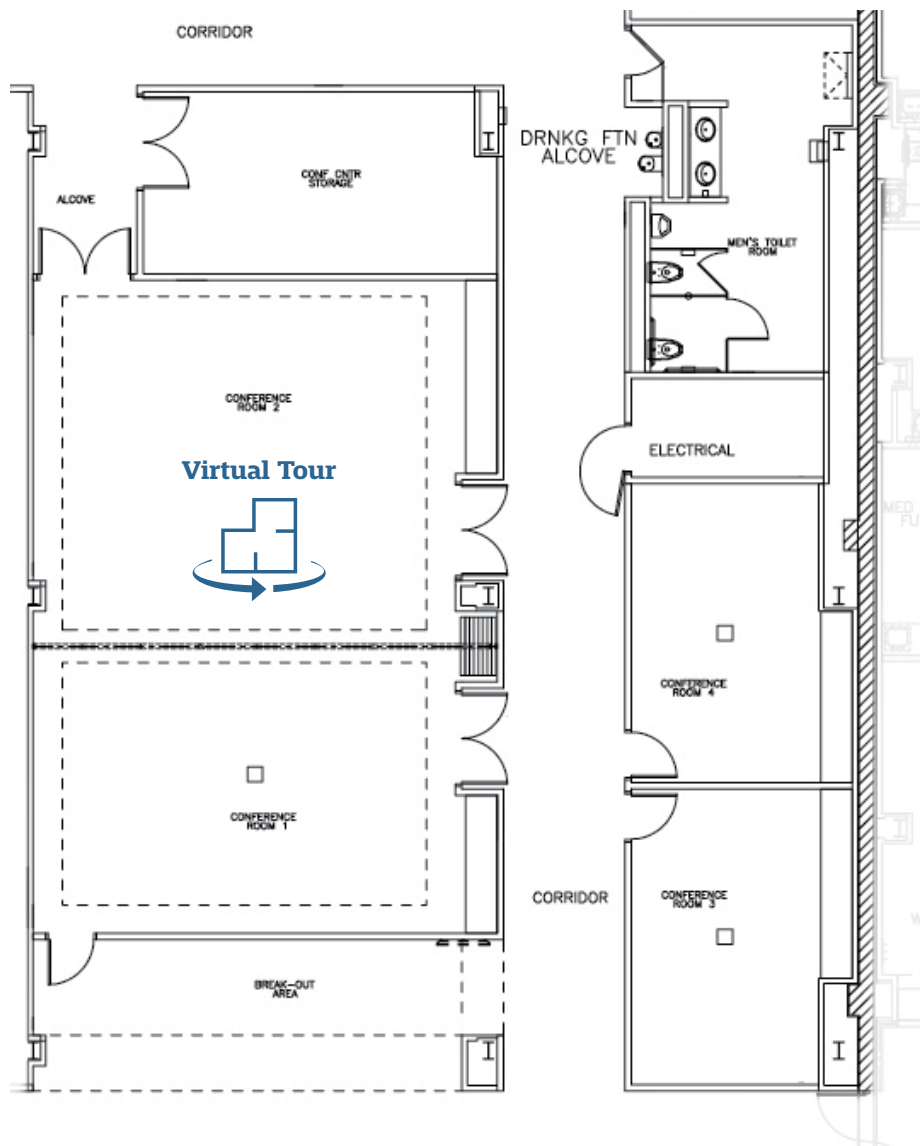
# Virtua Health & Wellness Center – Washington Township

239 Hurffville-Crosskeys Road, Sewell, NJ

## AVAILABLE SPACES

### Second Floor

SUITE	SIZE	DESCRIPTION
Suite 235	2,031 SF	Former conference center



For more information, please contact:

**Dan Moller**

dmoller@geisrealty.com  
215.701.0722

**Tom Hummel**

thummel@geisrealty.com  
215.568.2505

Owned &  
Managed By: **welltower**<sup>®</sup>

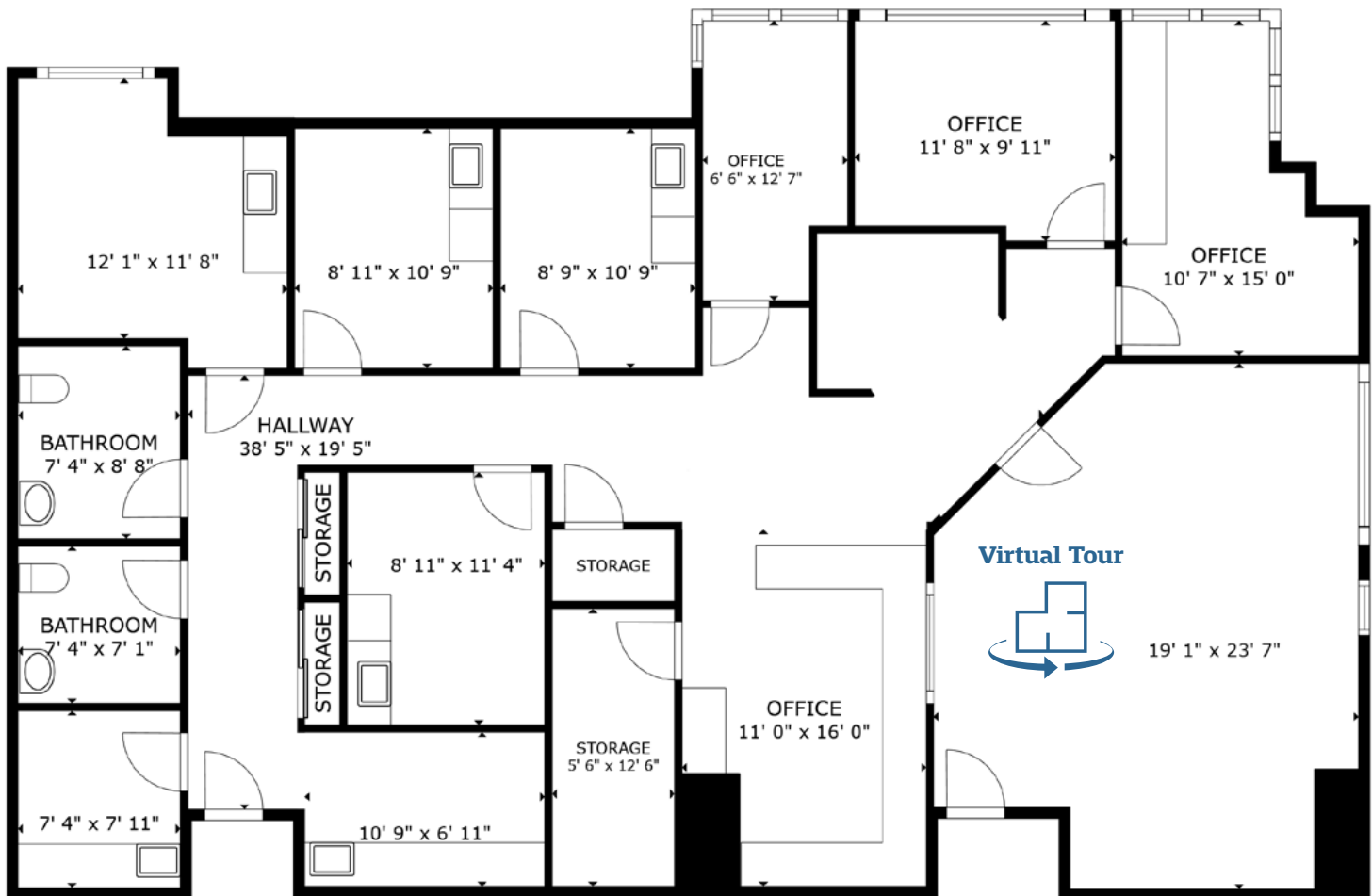
# Virtua Health & Wellness Center – Washington Township

239 Hurffville-Crosskeys Road, Sewell, NJ

## AVAILABLE SPACES

### Second Floor

SUITE	SIZE	DESCRIPTION
Suite 240	2,599 SF	Ready to go medical space



For more information, please contact:

**Dan Moller**  
dmoller@geisrealty.com  
215.701.0722

**Tom Hummel**  
thummel@geisrealty.com  
215.568.2505

Owned & Managed By:

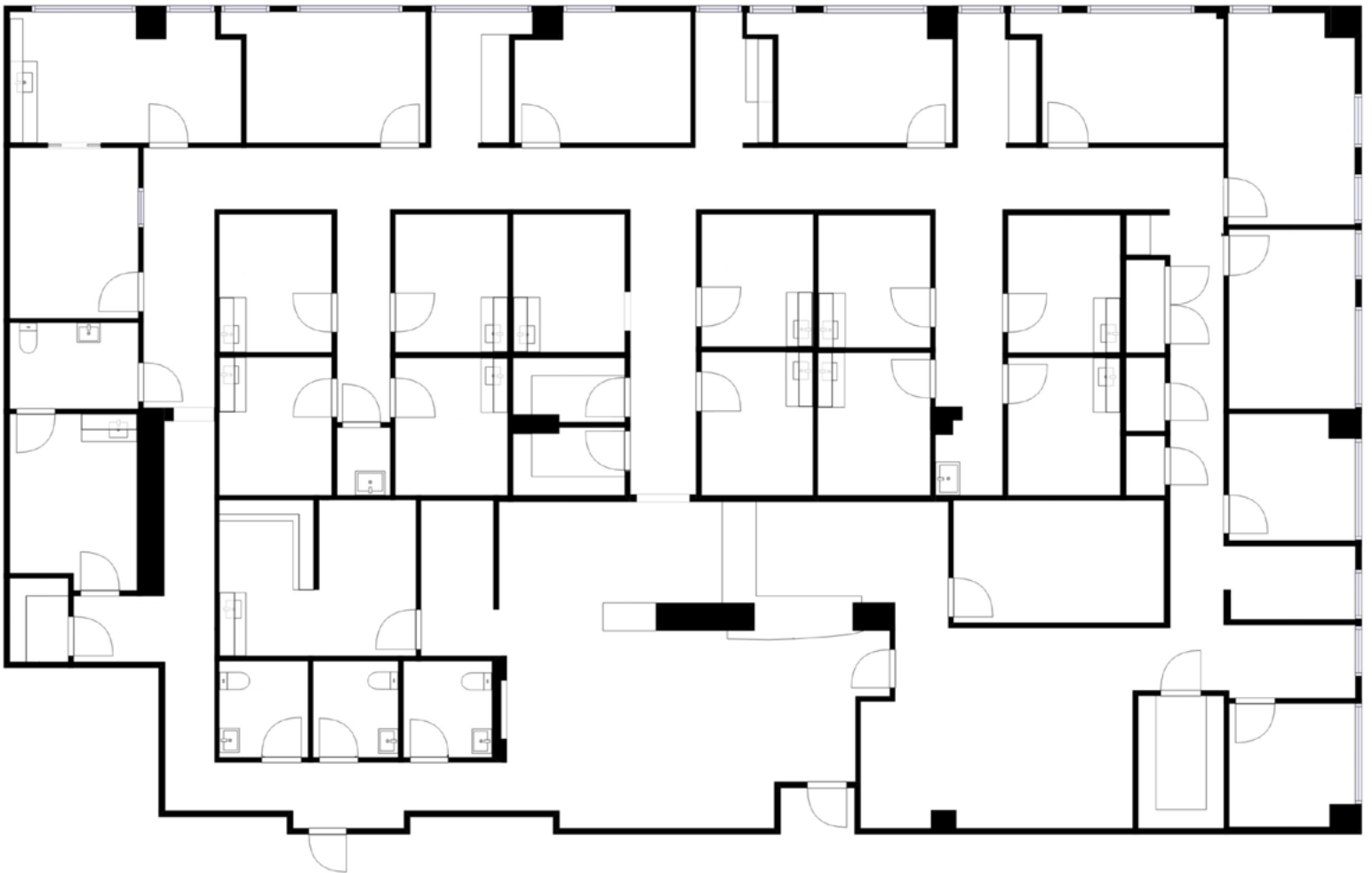
# Virtua Health & Wellness Center – Washington Township

239 Hurffville-Crosskeys Road, Sewell, NJ

## AVAILABLE SPACES

### Second Floor

SUITE	SIZE	DESCRIPTION
Suite 250	7,271 SF	Recently updated clinical space



Virtual Tour



For more information, please contact:

**Dan Moller**

dmoller@geisrealty.com  
215.701.0722

**Tom Hummel**

thummel@geisrealty.com  
215.568.2505

Owned &  
Managed By: **welltower**<sup>®</sup>

No warranty or representation, express or implied, is made as to the accuracy of the information contained herein, and the same is submitted subject to errors, omissions, change of price, rental or other conditions, prior sale, lease or financing, or withdrawal without notice, and of any special listing conditions imposed by our principals no warranties or representations are made as to the condition of the property or any hazards contained therein are any to be implied.



## AVAILABLE SPACES

### Second Floor

SUITE	SIZE	DESCRIPTION
Suite 255	1,163 SF	Fully customizable space. Currently in shell condition.



Virtual Tour



## AVAILABLE SPACES

### Second Floor

SUITE	SIZE	DESCRIPTION
Suite 270	3,887 SF	Fully customizable space. Currently in shell condition.

