

# 777

## Weaver Blvd

Wapello, IA

63,256 SF  
FOR SALE



CBRE



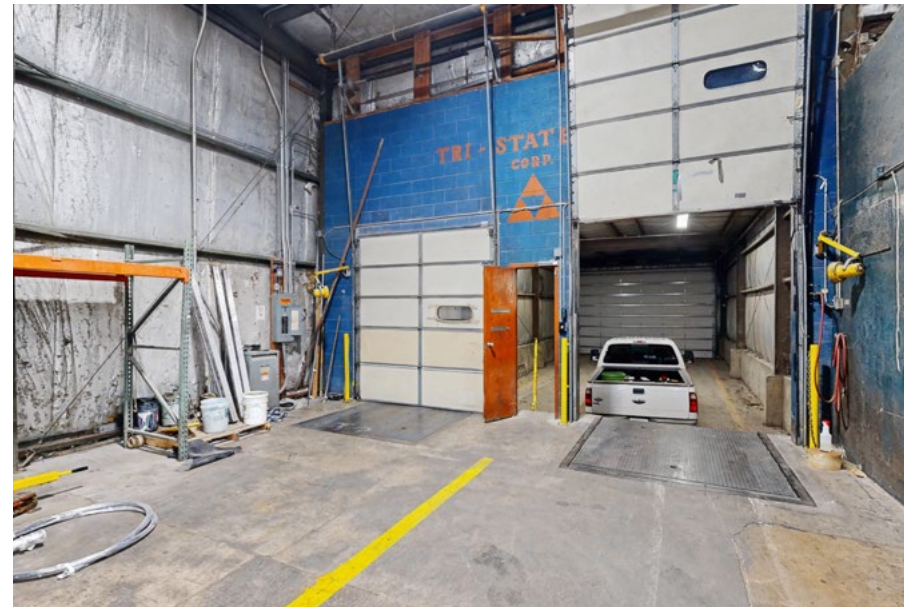
# EXECUTIVE SUMMARY

777 Weaver Blvd is a versatile industrial warehouse and manufacturing facility in Wapello, IA, offering functional space plus additional ground for future expansion. With strong utility infrastructure and convenient regional access, the property is ideal for users looking to grow, reposition, or invest in an area with limited industrial availability.

## PROPERTY OVERVIEW

Sale Price	\$1,900,000
Total SF	63,256 SF
Office SF	1,296 SF
Year Built	1979
Year Expanded:	1986
Clear Height	20' - 22'
Dock Doors	4 <ul style="list-style-type: none"><li>• 2 Interior Docks (9' x 10')</li><li>• 2 Exterior Docks (9' x 10')</li></ul>
Sprinkler	Wet
Heat	Reznor
Power	3 Phase, 480 V 1200 Amps
Column Spacing	25' x 30'
New Roof	2025

# INTERIORS



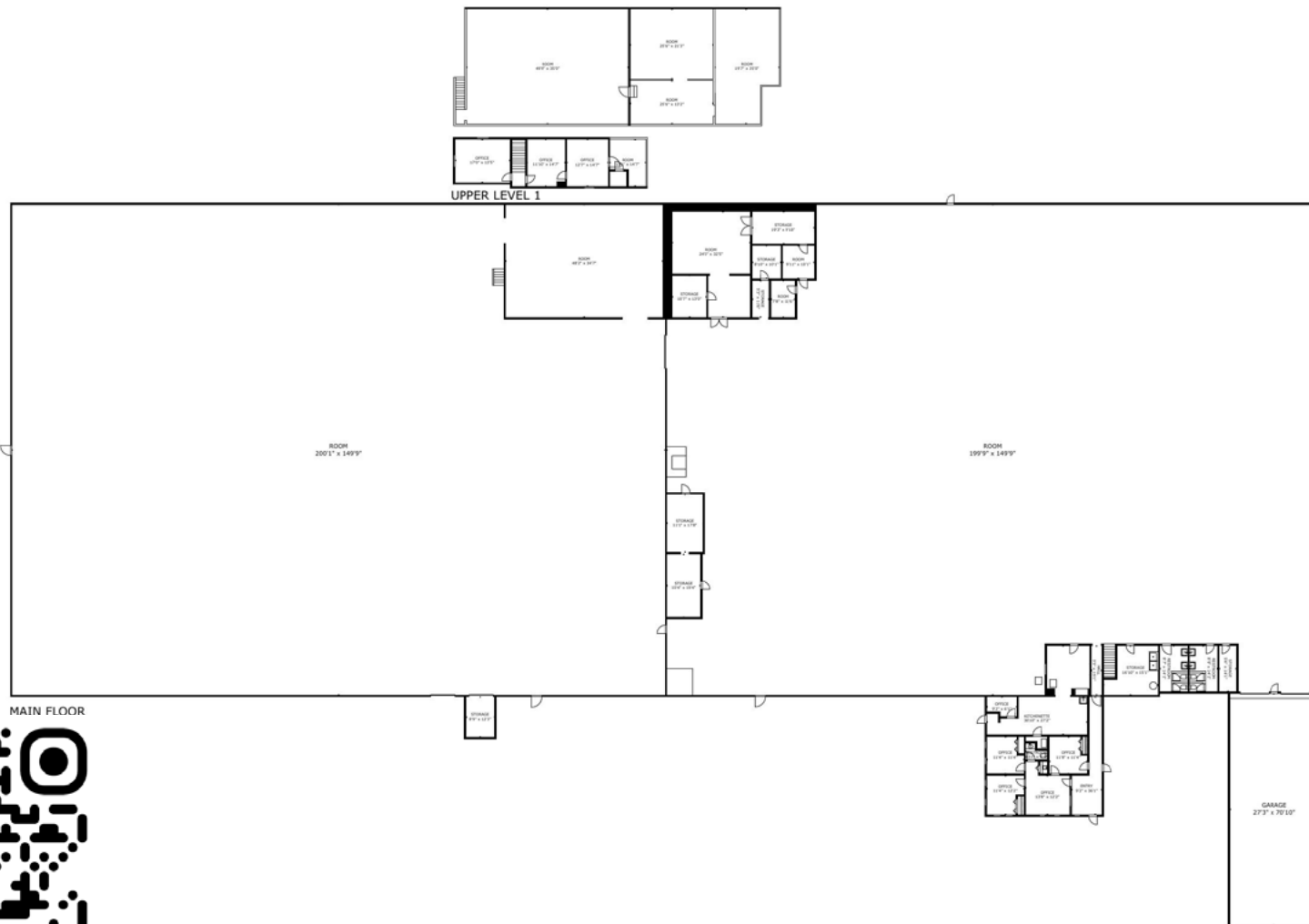
# EXTERIORS



# AERIAL



# FLOOR PLAN



Click for Live Tour



**777**  
Weaver Blvd

Washington

Muscatine

Aledo

Mount Pleasant

Wapello

Oquawka

Burlington

# 777

Weaver Blvd



## Harrison Kruse,SIOR,CCIM

First Vice President

+1 515 556 9168

[harrison.kruse@cbre.com](mailto:harrison.kruse@cbre.com)

Licensed in the State of Iowa

## Ned Turner

Senior Associate

+1 515 371 0499

[ned.turner@cbre.com](mailto:ned.turner@cbre.com)

Licensed in the State of Iowa

© 2026 CBRE, Inc. All rights reserved. This information has been obtained from sources believed reliable but has not been verified for accuracy or completeness. You should conduct a careful, independent investigation of the property and verify all information. Any reliance on this information is solely at your own risk. CBRE and the CBRE logo are service marks of CBRE, Inc. All other marks displayed on this document are the property of their respective owners, and the use of such logos does not imply any affiliation with or endorsement of CBRE. Photos herein are the property of their respective owners. Use of these images without the express written consent of the owner is prohibited.

**CBRE**