



M E R I D I A N

147 S. CHERRY STREET, SUITE 200 | WINSTON-SALEM, NC 27101 | P 336.722.1986 | F 336.723.3173

Development Opportunity

0 Mountain View Road

King, NC 27021



Great opportunity for development in King, NC. This property is conveniently located on Mountain View Road and is across the street from Sheetz.

	1mi	3mi	5mi
	2,382	14,987	25,430
	906	6,215	10,848
	\$67,702	\$63,730	\$64,217

For More Information:

William T. Bartholomew, Jr.

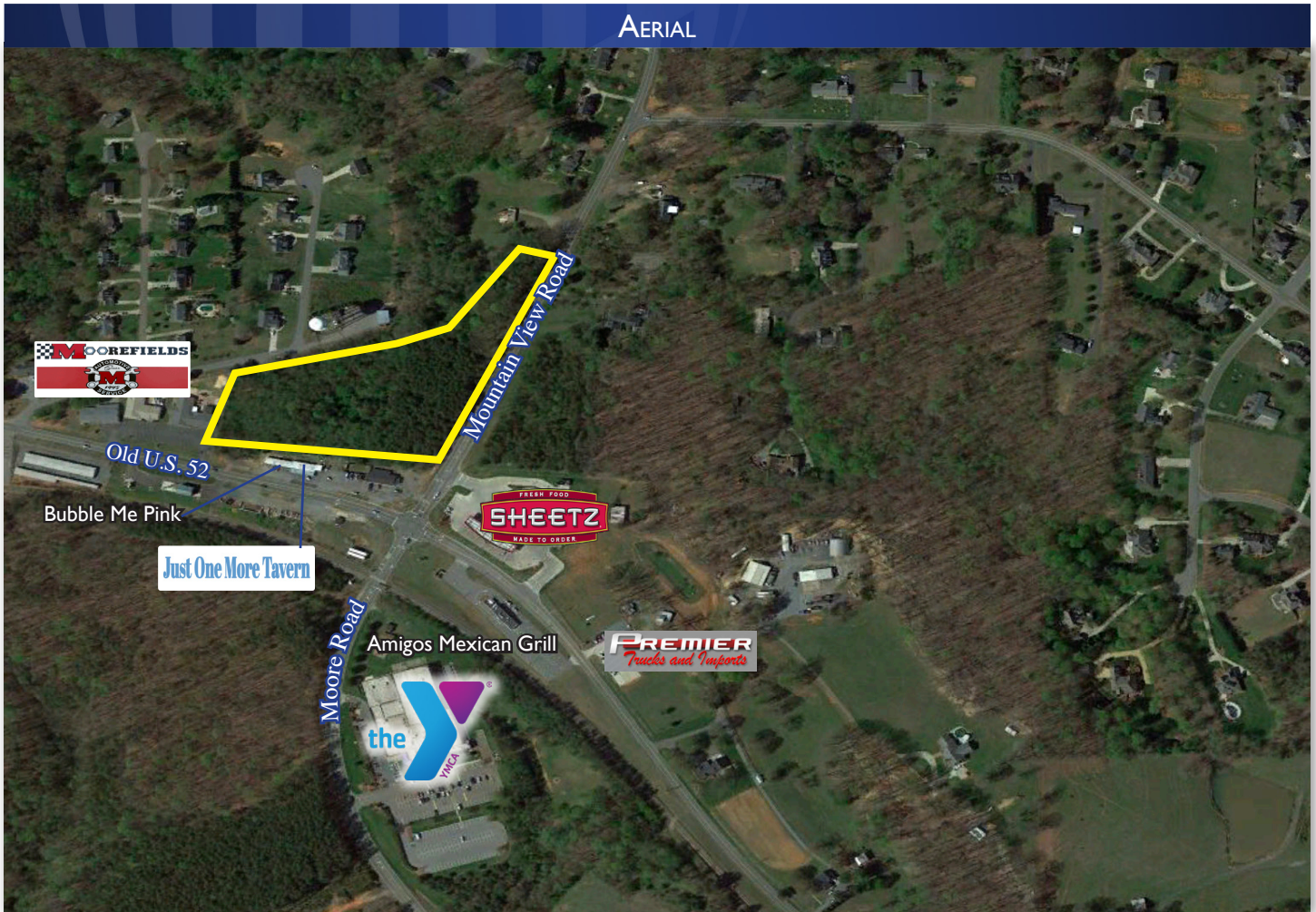
William@meridianrealty.com

336.480.2335

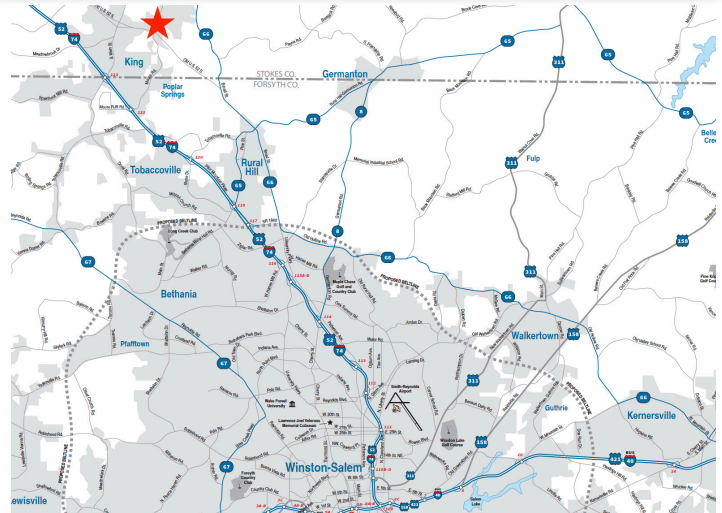
FOR SALE: \$915,000.00

0 Mountain View Road | King, NC 27021

AERIAL



- 7.03± ac
- Development opportunity
- Conveniently located
- Across from Sheetz
- **Sales Price: \$915,000.00**



No warranty or representation (express or implied) is made as to the accuracy or completeness of the information set forth herein. All information is submitted subject to errors, omissions, change of price, prior lease or sale, and withdrawal without notice. All marketing material produced by the Meridian Realty Group is proprietary. Any reproduction is expressly prohibited.



THE MERIDIAN REALTY GROUP | 147 S. CHERRY STREET, SUITE 200 | WINSTON-SALEM, NC 27101
P 336.722.1986 | F 336.723.3173

WWW.MERIDIANREALTY.COM