

6120 LINDSALE STREET  
DETROIT, MICHIGAN

INDUSTRIAL FOR SALE OR LEASE  
68,216 Square Feet Available

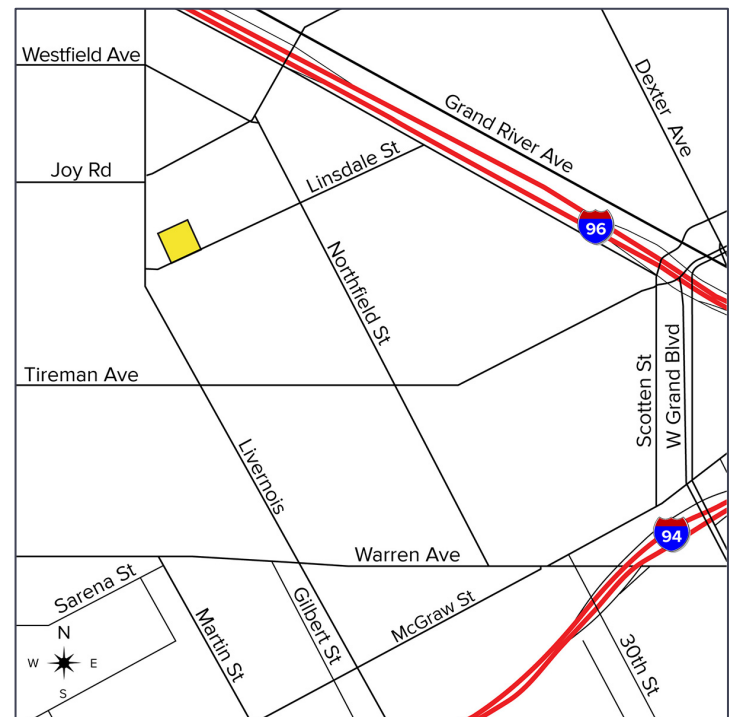


**SIGNATURE  
ASSOCIATES**  
KNOW SIGNATURE | KNOW RESULTS



## PROPERTY FEATURES

- 68,216 square feet available
- Office area to suit
- 18' – 24' clear height
- (4) 12' x 14' grade level doors
- (6) truckwells
- Building secured with electrical fence
- Building lends itself to many potential uses
- Located on 2.876 acres
- Lease Rate: \$3.00/sq. ft. NNN
- Sale Price: \$2,595,000 (\$38.04/sq. ft.)



For more information, please contact:

**JOE STACK**  
(248) 359 0615

[jstack@signatureassociates.com](mailto:jstack@signatureassociates.com)

**CHRIS MONSOUR**  
(248) 948 0107

[cmonsour@signatureassociates.com](mailto:cmonsour@signatureassociates.com)

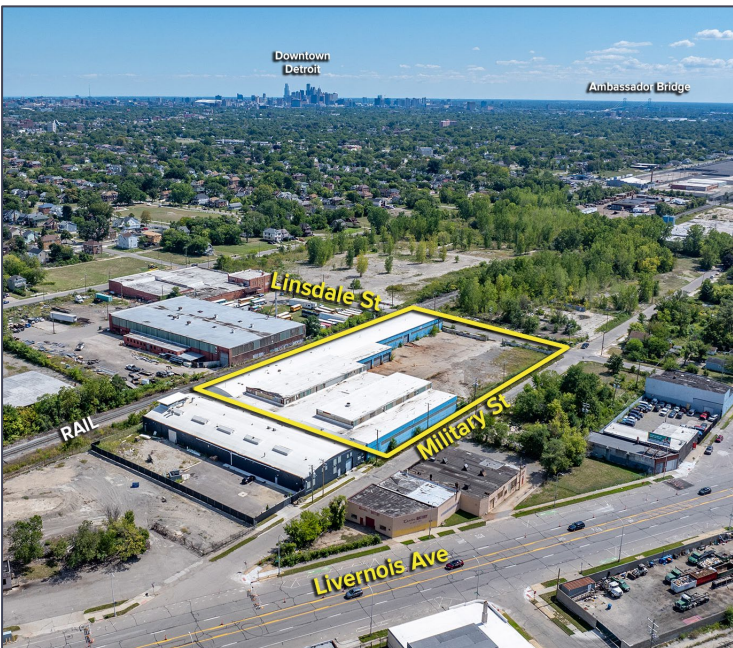
**SIGNATURE ASSOCIATES**  
One Towne Square, Suite 1200  
Southfield, MI 48076  
[www.signatureassociates.com](http://www.signatureassociates.com)

# 6120 Linsdale Street – Detroit, Michigan

Industrial For Sale or Lease

68,216  
Square Feet  
AVAILABLE

## Exterior Photos



For more information, please contact:

**JOE STACK**  
(248) 359 0615

[jstack@signatureassociates.com](mailto:jstack@signatureassociates.com)

**CHRIS MONSOUR**  
(248) 948 0107

[cmonsour@signatureassociates.com](mailto:cmonsour@signatureassociates.com)

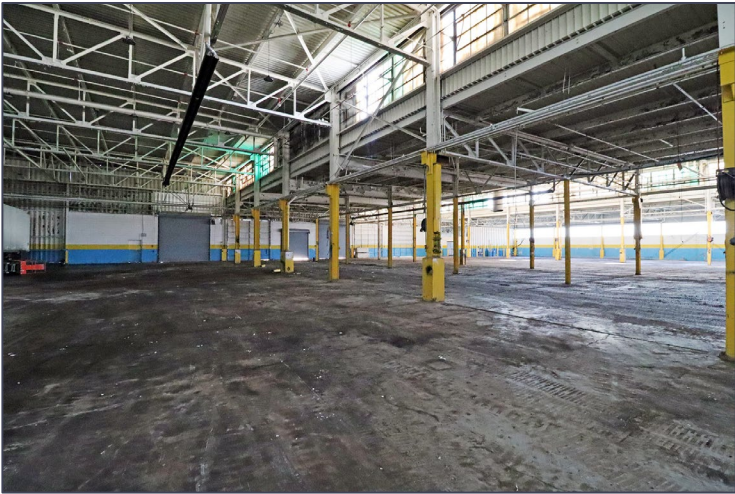
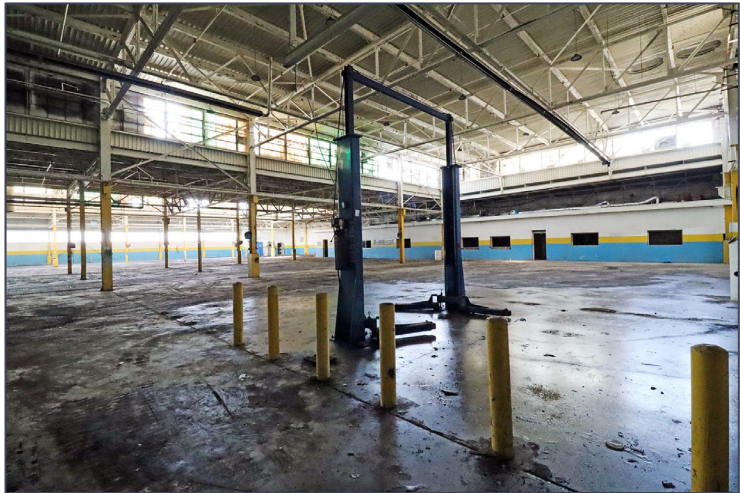
**SIGNATURE ASSOCIATES**  
One Towne Square, Suite 1200  
Southfield, MI 48076  
[www.signatureassociates.com](http://www.signatureassociates.com)

# 6120 Linsdale Street – Detroit, Michigan

Industrial For Sale or Lease

68,216  
Square Feet  
AVAILABLE

## Interior Photos



For more information, please contact:

**JOE STACK**  
(248) 359 0615

[jstack@signatureassociates.com](mailto:jstack@signatureassociates.com)

**CHRIS MONSOUR**  
(248) 948 0107

[cmonsour@signatureassociates.com](mailto:cmonsour@signatureassociates.com)

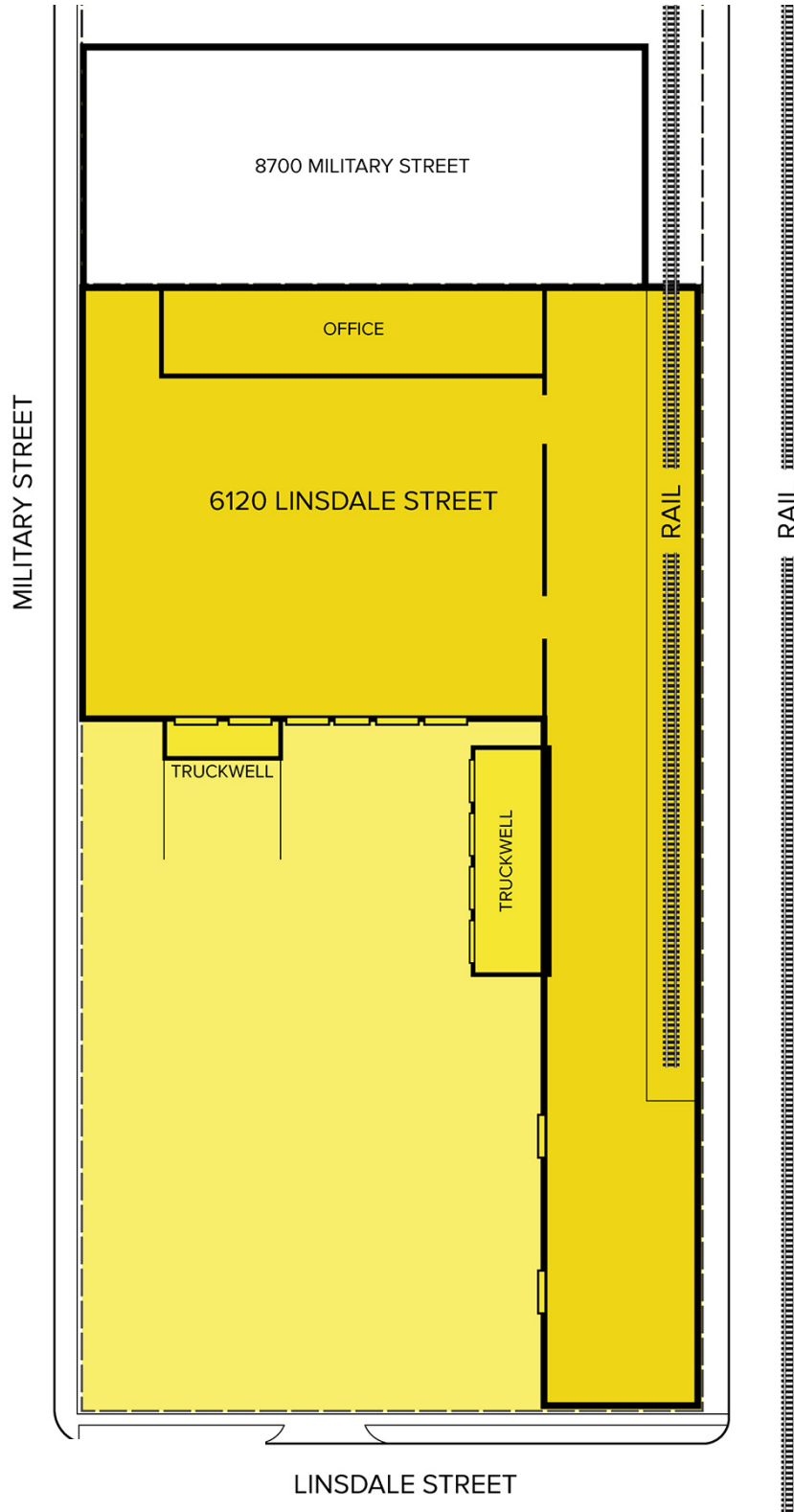
**SIGNATURE ASSOCIATES**  
One Towne Square, Suite 1200  
Southfield, MI 48076  
[www.signatureassociates.com](http://www.signatureassociates.com)

# 6120 Linsdale Street – Detroit, Michigan

Industrial For Sale or Lease

68,216  
Square Feet  
AVAILABLE

## Site Plan



For more information, please contact:

**JOE STACK**  
(248) 359 0615

[jstack@signatureassociates.com](mailto:jstack@signatureassociates.com)

**CHRIS MONSOUR**  
(248) 948 0107

[cmonsour@signatureassociates.com](mailto:cmonsour@signatureassociates.com)

**SIGNATURE ASSOCIATES**  
One Towne Square, Suite 1200  
Southfield, MI 48076  
[www.signatureassociates.com](http://www.signatureassociates.com)

# 6120 Linsdale Street – Detroit, Michigan

Industrial For Sale or Lease

68,216  
Square Feet  
AVAILABLE

Aerial



For more information, please contact:

**JOE STACK**  
(248) 359 0615  
jstack@signatureassociates.com

**CHRIS MONSOUR**  
(248) 948 0107  
cmonsour@signatureassociates.com

**SIGNATURE ASSOCIATES**  
One Towne Square, Suite 1200  
Southfield, MI 48076  
www.signatureassociates.com

Information is subject to verification and no liability for errors or omissions is assumed. Price is subject to change and listing withdrawal.