

CREATIVE SPACE LOCATED IN AMENITY RICH OCEAN PARK

1626

OCEAN PARK
SANTA MONICA | CA



NEWMARK

ANDREW JENNISON

Vice Chairman
t 310-407-6518
andrew.jennison@nrmrk.com
CA RE Lic. #01275687

DANIEL PICKART

Senior Managing Director
t 310-407-6515
daniel.pickart@nrmrk.com
CA RE Lic. #01914551

RENEE NELSON

Transaction Manager
t 310-407-6517
renee.nelson@nrmrk.com
CA RE Lic. #01991249

1626

OCEAN PARK
SANTA MONICA | CA



Suite B: 400 SF
SPACE AVAILABLE



\$5.00 MG
LEASE RATE



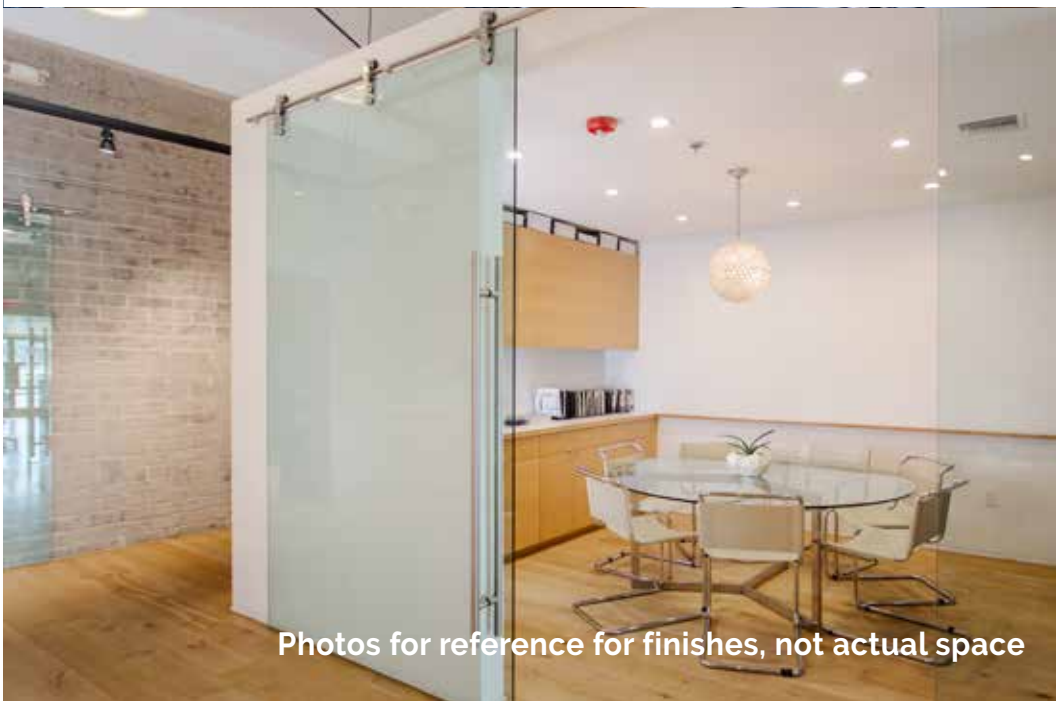
Immediately
AVAILABILITY



3-5 Years
TERM

- 3:1,000 SF at \$150/Month
- Space available off parking in the back (not on Ocean Park)
- Studio Lighting
- Hardwood Floors
- Bow Truss
- Exposed Brick
- Bright and airy open workspace with skylights
- Close proximity to Santa Monica Beach (5-min drive)

PROPERTY INFO & HIGHLIGHTS



Photos for reference for finishes, not actual space

1626

OCEAN PARK
SANTA MONICA | CA

AREA AMENITIES

1626 OCEAN PARK BLVD

Tre Mani / Ghisallo / Jyan Isaac Bread

Layla Bagels

Thyme Cafe

Santa Monica Yoga

Bob's Market

Yoga-urt

Antequera Bakery

Handel's Ice Cream

Love Coffee Bar

Local Kitchen & Wine Bar

Cafe Bolivar



CREATIVE SPACE LOCATED IN AMENITY RICH OCEAN PARK

1626

OCEAN PARK
SANTA MONICA | CA



The distributor of this communication is performing acts for which a real estate license is required. The information contained herein has been obtained from sources deemed reliable but has not been verified and no guarantee, warranty or representation, either express or implied, is made with respect to such information. Terms of sale or lease and availability are subject to change or withdrawal without notice.

Newmark \ 1875 Century Park E, Suite 1380 \ Los Angeles, CA 90067 \ Corporate License #01355491

ANDREW JENNISON
Vice Chairman
t 310-407-6518
andrewjennison@nrmk.com
CA RE Lic. #01275687

DANIEL PICKART
Senior Managing Director
t 310-407-6515
danielpickart@nrmk.com
CA RE Lic. #01914551

RENEE NELSON
Transaction Manager
t 310-407-6517
renee.nelson@nrmk.com
CA RE Lic. #01991249

NEWMARK