

Office | For Lease

CBRE

Laidley Tower

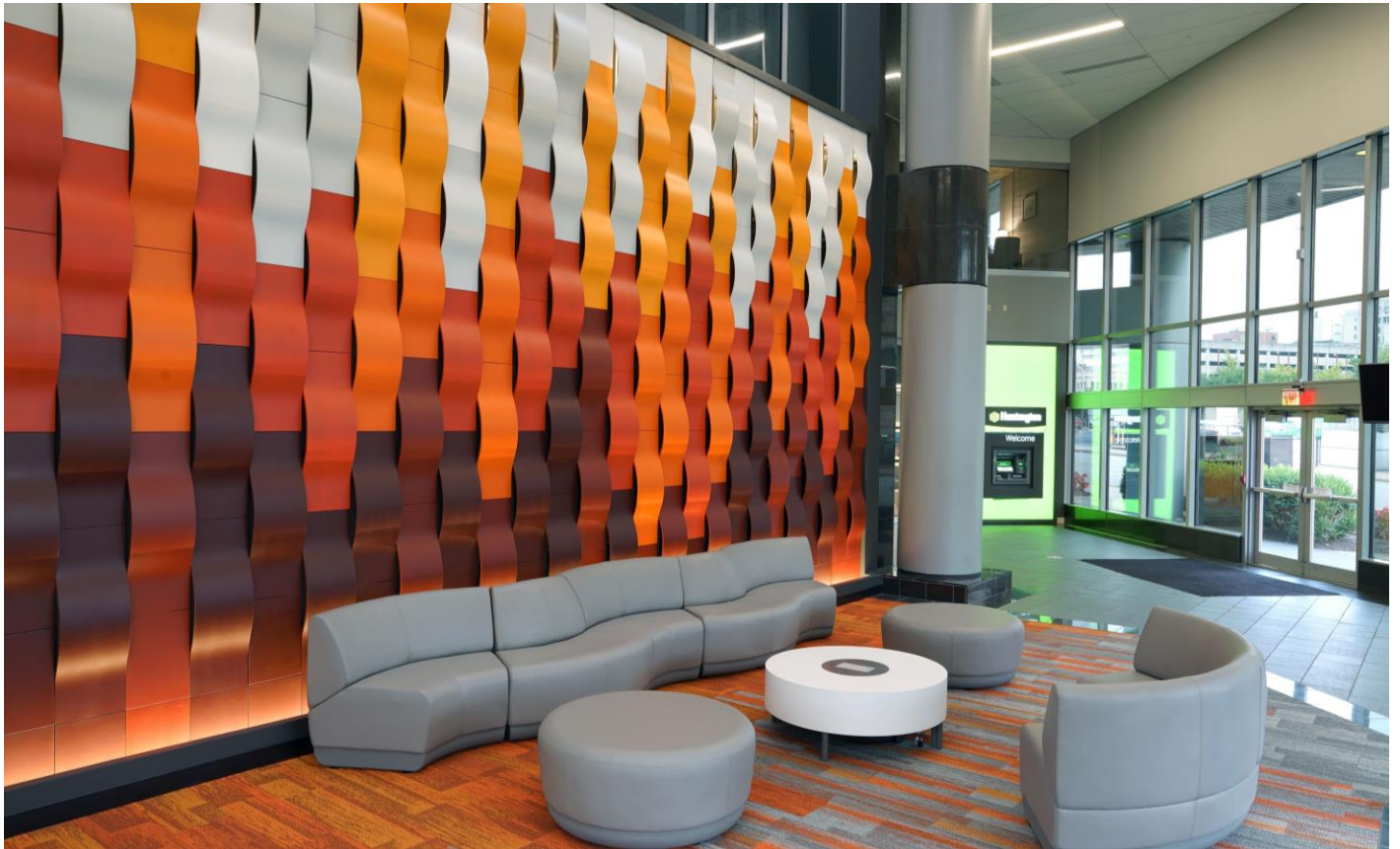
OFFICE SUITES AVAILABLE

500 Lee Street East
Charleston, WV 25301



Laidley Tower

500 Lee Street East, Charleston, WV 25301



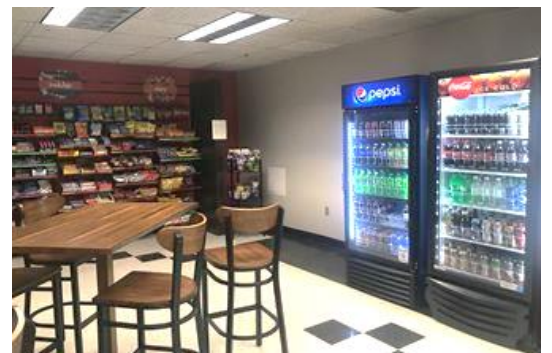
Class A Office Space

Located in Charleston's CBD

Multiple tenancy high rise tower with banking facility on site.

Amenities include:

- High-speed internet access
- 24/7 onsite security & keycard entry system
- Micro market
- 549 space parking facility
- Five modernized high-speed elevators
- Elegant atrium lobby renovated in 2020
- Banking facility on site



18

Stories of Class A Office Space

1984

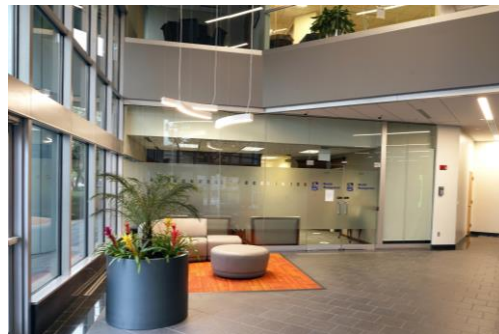
Year Built

2020

Lobby & Market Renovated

Class A Office Suites Available

2 nd Floor	3,051 USF 1,120 USF
4 th Floor, Suite 401	2,196 USF
5 th Floor	12,317 USF
8 th Floor	4,162 USF
9 th Floor, Suite 950	3,145 USF
11 th Floor, Suite 1140	1,394 USF



2023 Demographics	One Mile	Three Miles	Five Miles
Population	6,409	43,455	65,714
Households	3,362	19,852	30,066
Average Household Income	\$74,578	\$93,088	\$92,636
Businesses	1,696	2,960	4,152

Laidley Tower

Class A Suites Available

Available 2nd Floor

3,051 USF

1,120 USF



Available 4th Floor

Suite 401

2,196 USF



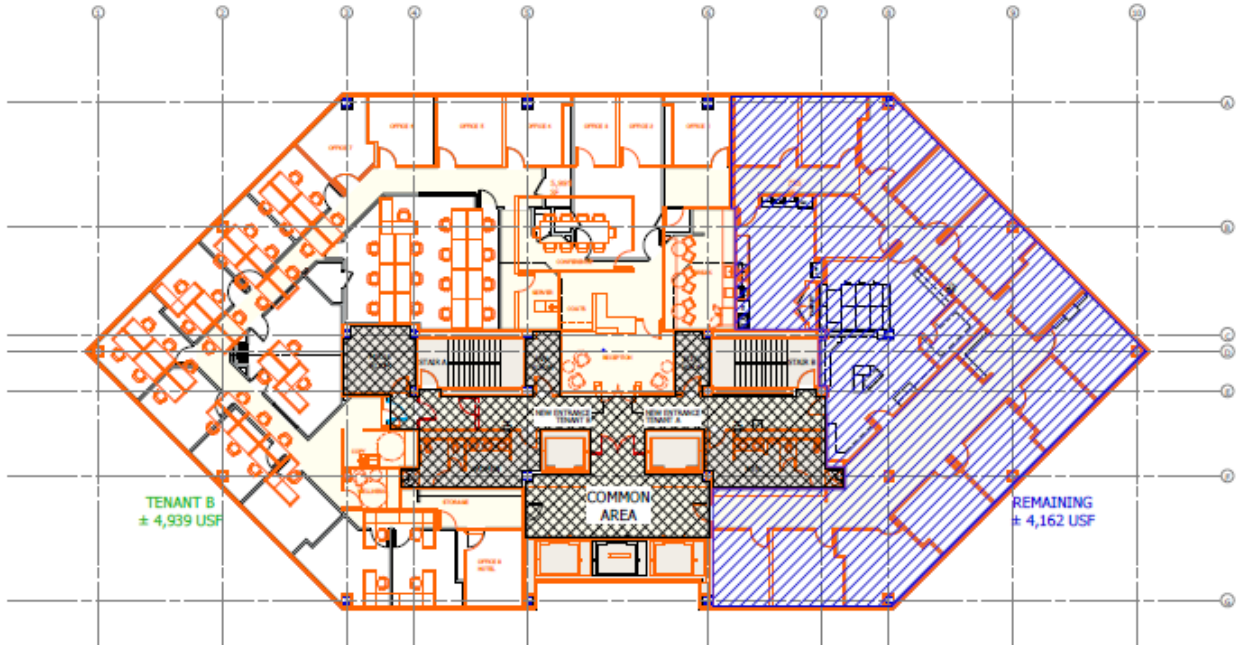
Laidley Tower

Class A Suites Available

Available 5th Floor:
12,317 USF



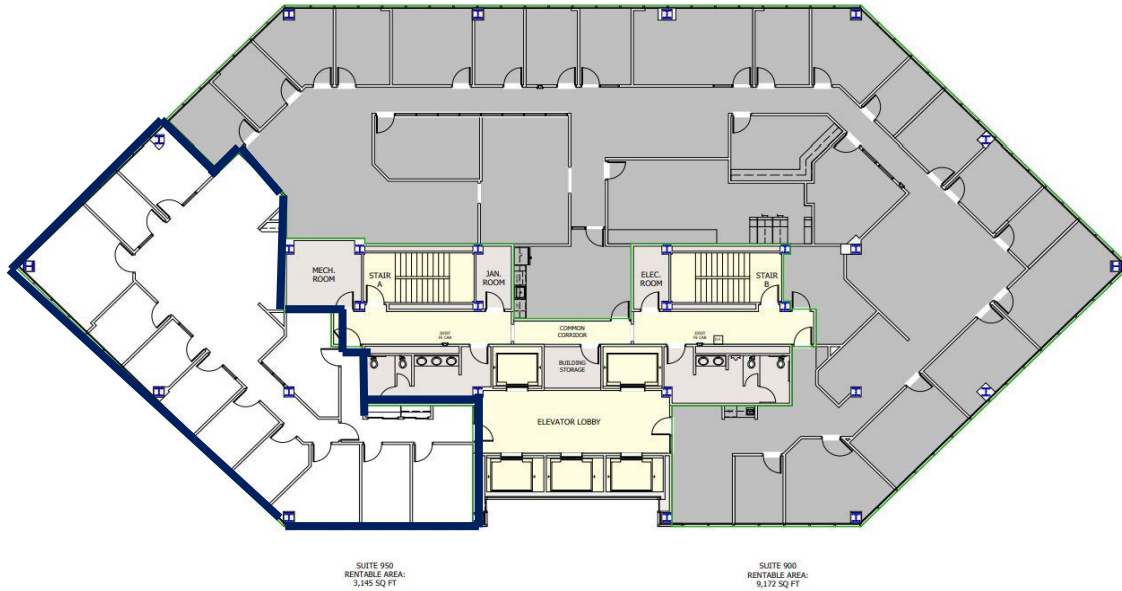
Available 8th Floor:
4,162 USF



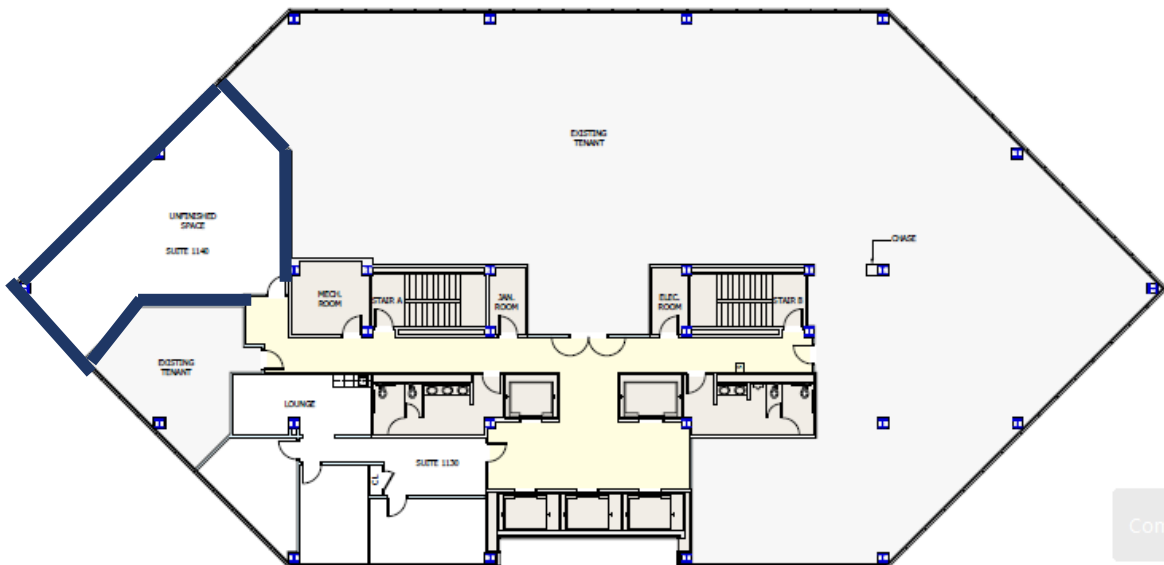
Laidley Tower

Class A Suites Available

Available 9th Floor:
Suite 950 3,145 USF



Available 11th Floor:
Suite # 1140- 1,394 USF (Shell)



Comm

Laidley Tower

Class A Suites Available



© 2023 CBRE, Inc. All rights reserved. This information has been obtained from sources believed reliable but has not been verified for accuracy or completeness. You should conduct a careful, independent investigation of the property and verify all information. Any reliance on this information is solely at your own risk.

Laidley Tower

Class A Suites Available



DeWitt Blundon
Associate Broker
+1 304 546 2581
dewitt.blundon@cbre.com

David Durbin
Broker
+1 304 720 8497
david.durbin@cbre.com
707 Virginia Street East
Charleston, WV 25301

© 2023 CBRE, Inc. All rights reserved. This information has been obtained from sources believed reliable but has not been verified for accuracy or completeness. You should conduct a careful, independent investigation of the property and verify all information. Any reliance on this information is solely at your own risk.