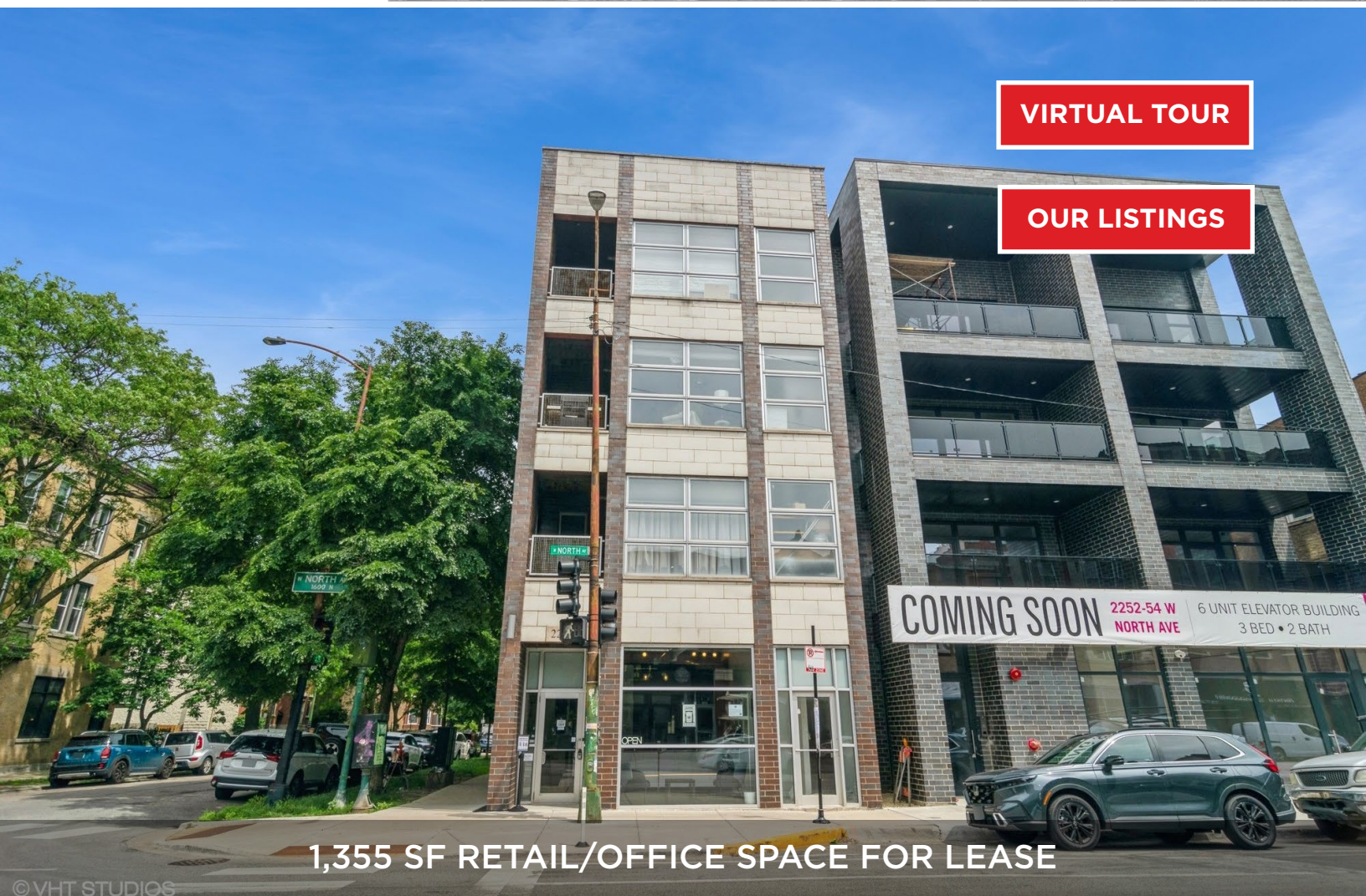


VIRTUAL TOUR

OUR LISTINGS



1,355 SF RETAIL/OFFICE SPACE FOR LEASE

PROPERTY INFORMATION

- +/- 1,355sqft
- Retail/Office Space For Lease in Wicker Park
- Corner Space with high visibility
- Large Bright Windows
- Large restroom
- Private office with large bright window
- 13 Foot Ceilings
- Parking included
- Two Entrances for ease of access
- Right out front of North Ave and Oakley Bus Stop

- Quick access to 606 Trail
- Ample Street parking
- Area Tenants Include: Chipotle, Anytime fitness, Walgreens, AutoZone, Western Union, An abundant list of restaurants, Bucktown Wicker Park Dental, & More!

TOWNSHIP

COOK

ZONED

B3-2

ALDERMAN/WARD

WAGUESPACK, SCOTT/32

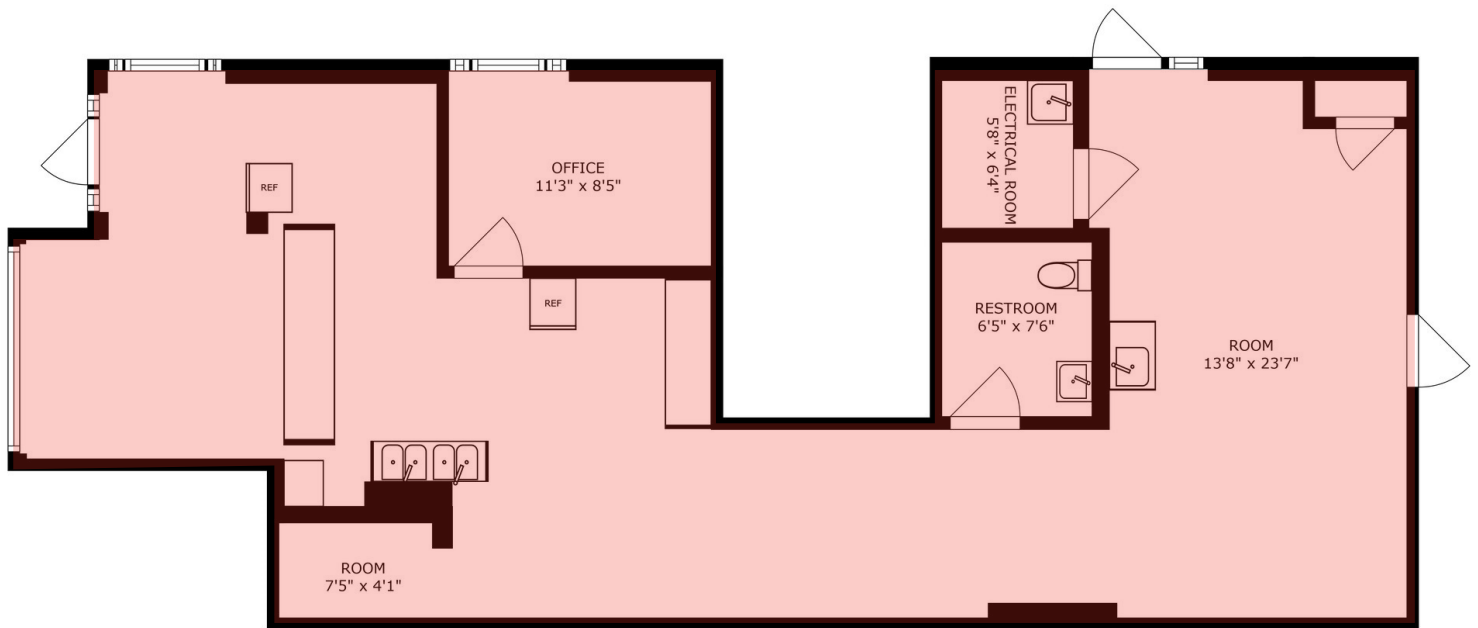
DAKOTA NILSON

312.838.8873

dakotnilson@atproperties.com









WICKER PARK

Residents and businesses flocked to Wicker Park to rebuild after the Great Chicago Fire of 1871. Today, Chicagoans flock to the hip, happening neighborhood for its eateries, arts and entertainment.

Wicker Park boasts an eclectic assortment of cafes, independent stores, dive bars, upscale boutiques, art galleries and city parks including four-acre Wicker Park. The neighborhood is home to some of Chicago's most popular and acclaimed restaurants, elevating pizza and tacos to foodie fare and offering a wide variety of options for drinking and dining pleasure.

Located just south of Bucktown and northwest of The Loop, the neighborhood includes large historic 19th century brick and stone mansions and landmark Victorian homes on tree-lined streets. Modern new construction condominiums and single-family homes along with vintage walk-ups, three-flats and lofts round out the diversity of housing available.

Like neighboring Bucktown, Wicker Park's notable commercial architecture remains - re-imagined, redeveloped and restored. The iconic Flat Iron Arts Building, home to artists who moved to the neighborhood in the 1980s, still houses various art studios and local businesses today.

The CTA Blue Line offers convenient access to The Loop and O'Hare International Airport, while the Kennedy Expressway allows for an easy drive to surrounding neighborhoods and suburbs.



AREA DEMOGRAPHICS

POPULATION ESTIMATE

1 MILE

70,881

3 MILE

548,700

5 MILE

1,272,159

ESTIMATED AVERAGE HOUSEHOLD INCOME

1 MILE

\$180,043

3 MILE

\$163,292

5 MILE

\$138,356