



1740 NW 22nd St

1740 NW 22nd St, Miami, FL 33142



Agustin Palazzo

PX Equities LLC

260 Crandon Blvd, Suite 53, Key Biscayne, FL 33149

agustin.palazzo@pxequities.com

(786) 618-0858

1740 NW 22nd St

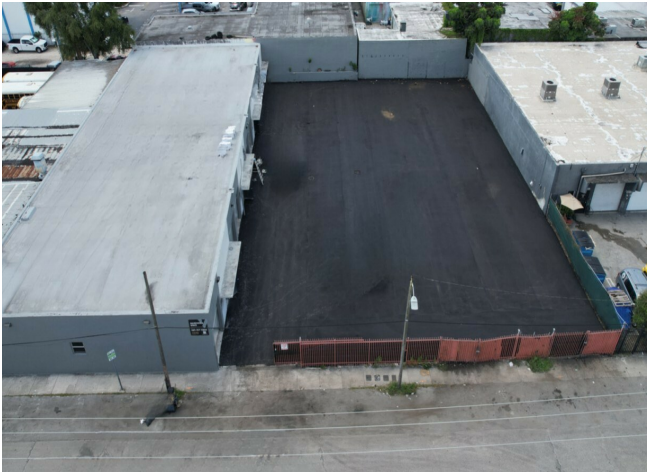
Upon Request

Industrial Parking: An expansive 7,000-square-foot newly paved parking lot available providing unmatched convenience and flexibility for your logistics and operations. Situated in the thriving neighborhood of Allapattah, this property offers excellent connectivity to major highways, ports, and business hubs, making it a strategic choice for your business.

This parking can be rented independently or together with one or more neighboring units at 1724 NW 22nd Street, creating the the perfect solution for your business needs in the heart of Allapattah, Miami. The newly remodeled flex space is ideal for last-mile delivery, warehousing, office, and storage purposes, offering unmatched versatility and convenience. The side property features seven units, each approximately 1,150 square feet, offering both small office spaces and ample warehousing options.

Why...

- Central Hub and conveniently located
- Newly paved
- Gated Lot

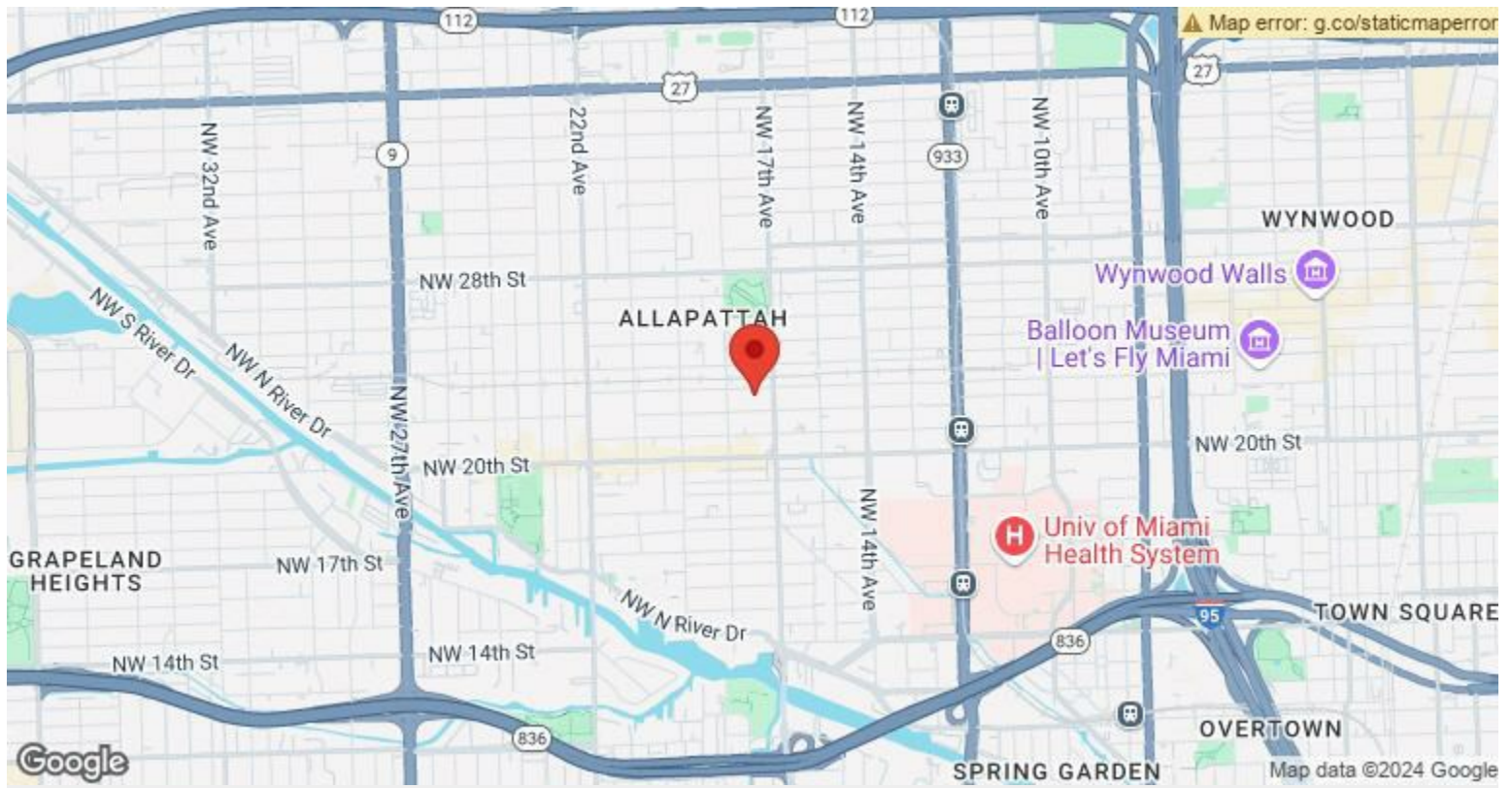


Rental Rate:	Upon Request
Property Type:	Land
Property Subtype:	Commercial
Proposed Use:	Unknown
Rental Rate Mo:	Upon Request

Space 1

Space Available	7,000 SF
Rental Rate	Upon Request
Date Available	Now

Description: We are excited to present a newly paved 7,000 square foot gated industrial parking lot in the heart of Allapattah, Miami. This prime piece of real estate is strategically located at 1740 NW 22nd Street, offering unparalleled convenience and accessibility for a variety of industrial and logistics needs. Why Choose This Location:-
Central Hub: Allapattah is a vibrant industrial zone with a growing demand for logistics and industrial parking. Its central location ensures quick access to Miami's key areas, including the airport, port, and downtown.-
Efficiency: Reduce transit times and fuel costs by parking closer to your service areas. The lot's location minimizes unnecessary driving, enhancing operational efficiency.-
Security and Peace of Mind: The gated and locked facility ensures that your vehicles and equipment are stored safely, providing peace of mind and reducing the risk of theft or vandalism.-
Investment in Infrastructure: The newly paved surface ensures durability and low maintenance, providing a long-term solution for your parking needs. Don't miss out on this exceptional opportunity to secure prime industrial parking in the heart of Miami. Contact us today to schedule a viewing or for more information on how this parking lot can meet your industrial and logistical requirements.



1740 NW 22nd St, Miami, FL 33142

Industrial Parking: An expansive 7,000-square-foot newly paved parking lot available providing unmatched convenience and flexibility for your logistics and operations. Situated in the thriving neighborhood of Allapattah, this property offers excellent connectivity to major highways, ports, and business hubs, making it a strategic choice for your business.

This parking can be rented independently or together with one or more neighboring units at 1724 NW 22nd Street, creating the the perfect solution for your business needs in the heart of Allapattah, Miami. The newly remodeled flex space is ideal for last-mile delivery, warehousing, office, and storage purposes, offering unmatched versatility and convenience. The side property features seven units, each approximately 1,150 square feet, offering both small office spaces and ample warehousing options.

Why Choose This Property? Seize the opportunity to establish your business in a prime location with top-notch facilities. This versatile flex space is designed to adapt to your evolving business needs, offering a strategic advantage in the competitive Miami market.

Contact us today to schedule a tour and secure this exceptional property for your business. Don't miss out on this unique opportunity to enhance your operations and achieve your business goals.