



THOR EQUITIES

14-22 RIVER ROAD

Bogota, New Jersey

*industrial
with rail access
for lease*

Property Specifications

*Located in one of the strongest submarkets in the country with **dedicated rail access including two train stops onsite**, and immediate access to a network of highways.*

142,480

square foot industrial/flex building

10

Loading Docks

16' to 22'

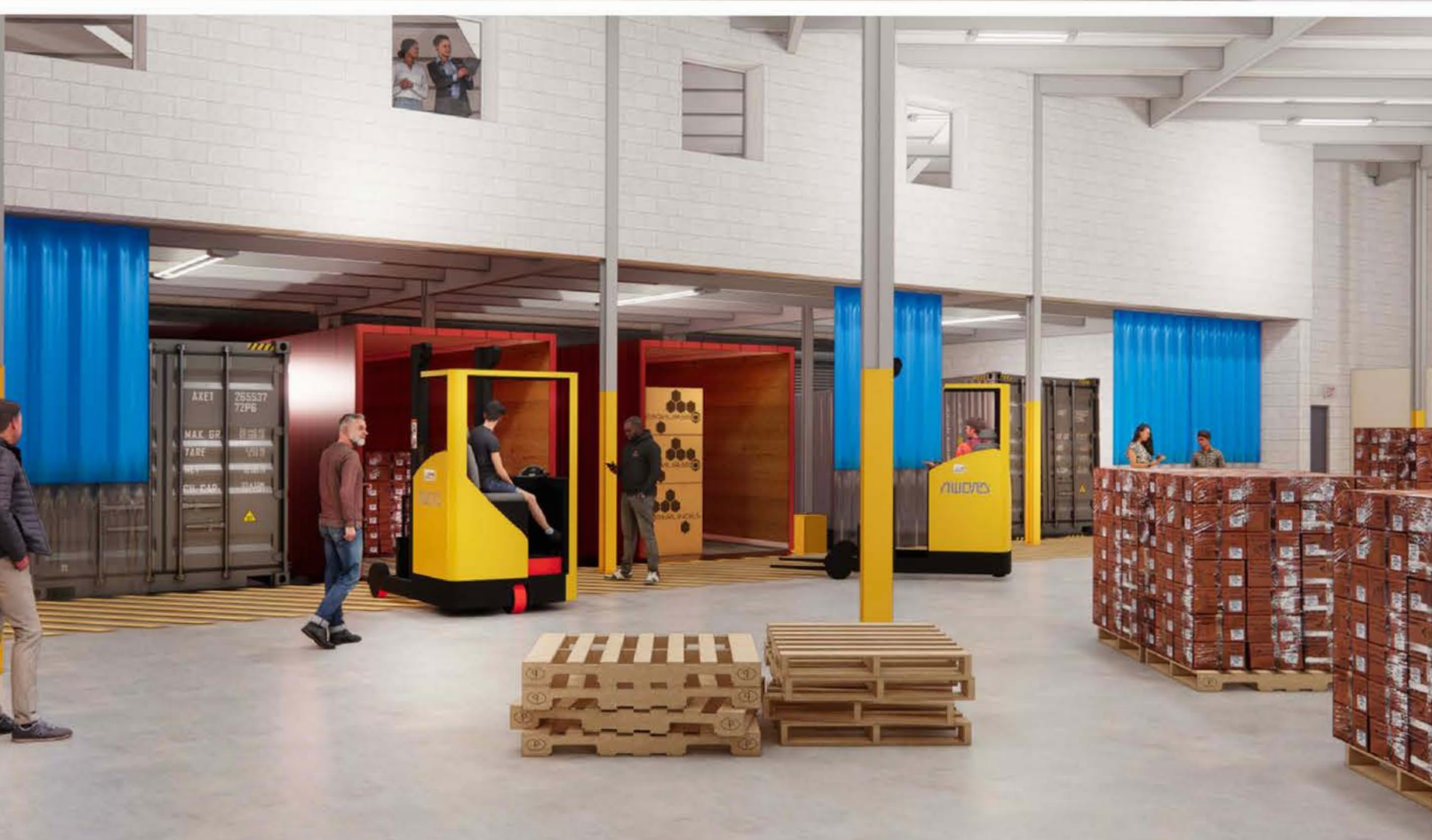
ceiling heights

Distribution users can access

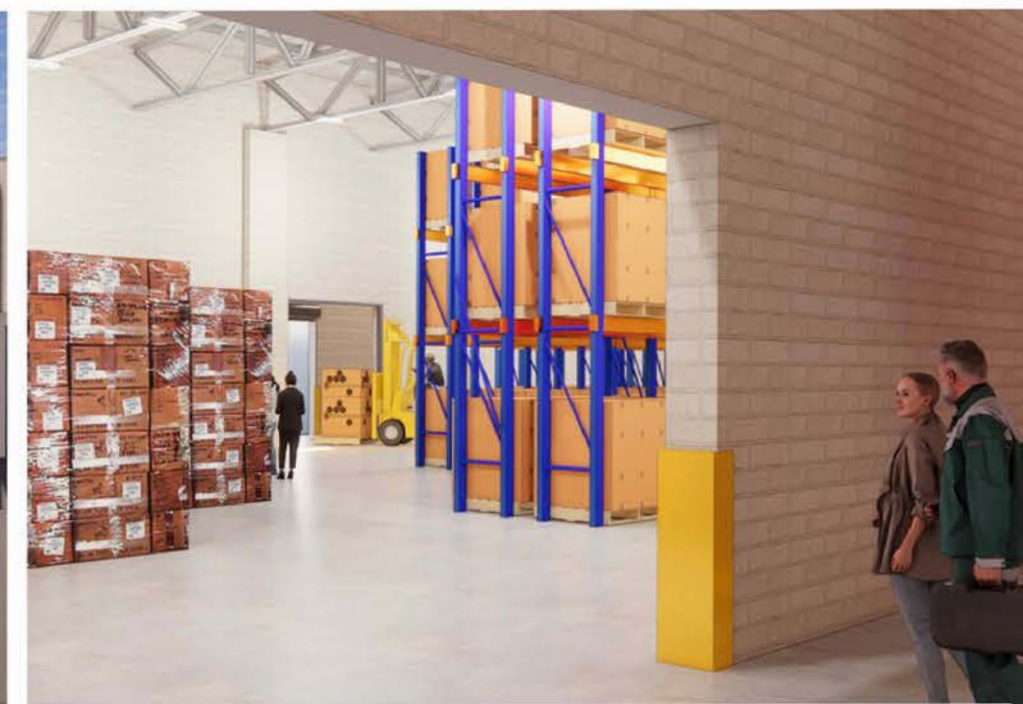
1/3 of US population

- ✓ Up to 142,480 square feet of contiguous space
- ✓ Office space available
- ✓ 157 parking stalls for building
- ✓ One (1) Drive-In, 10 Dock High
- ✓ Sprinklers: Wet
- ✓ Undergoing Renovations: upgrading façade, LED Lighting
- ✓ Minutes from the George Washington Bridge
- ✓ Easy access to I-80, near Routes 17, 4, US-46, I- 95, and Garden State Pkwy
- ✓ Completion date: 8/12/2024

Property Photography



Property Photography



Location Details



14-22
River Road



Site Map

UNIT A-1

49,924 sqft total

3 double dock doors

4 docks

16.5' to 20.8' clear heights
monument signage

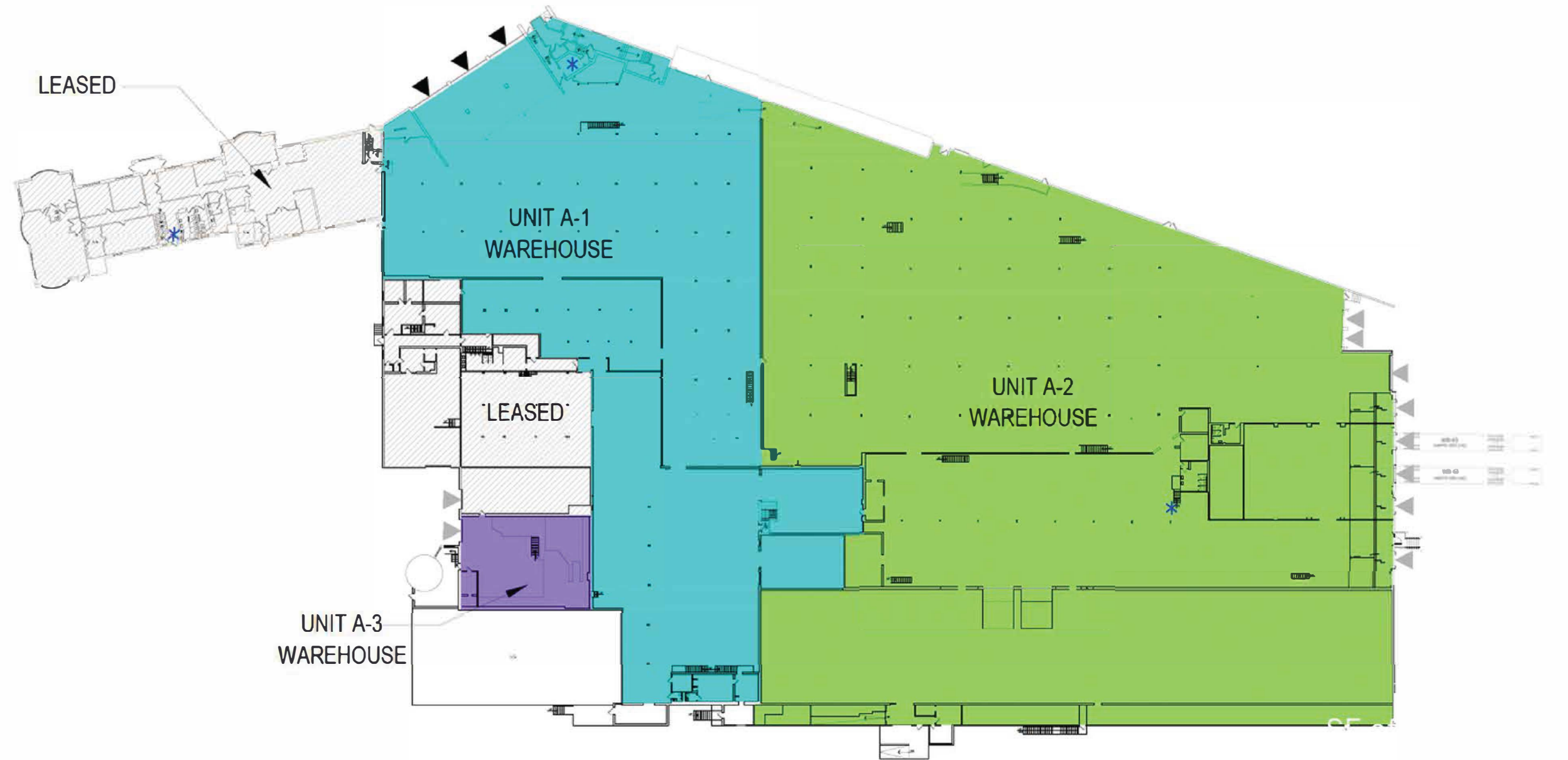
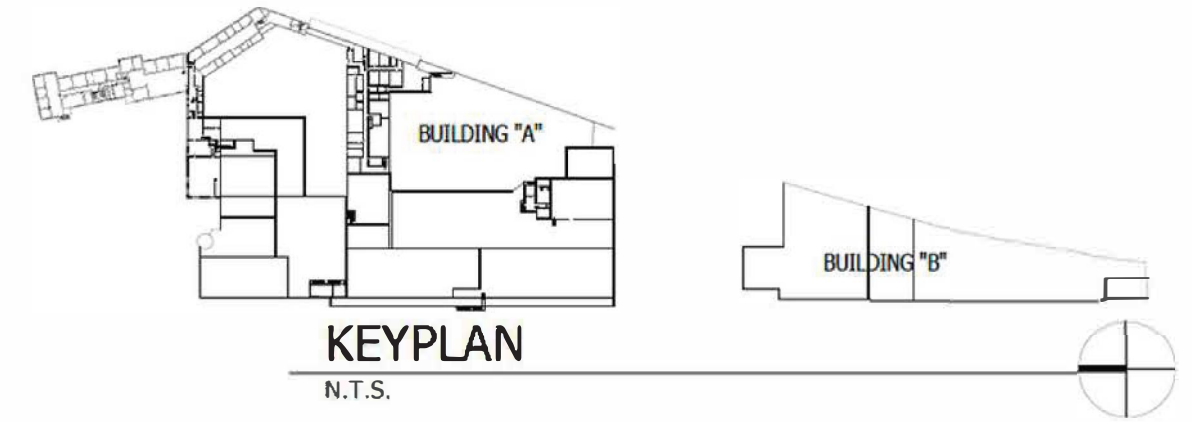
UNIT A-2

92,556 sqft total

8 dock doors

16' to 22' clear heights
signage visible from I-80

Rail access available



BUILDING "A" 1st LEVEL - LEASING PLAN

N.T.S. FOOTPRINT: 157,853 SF

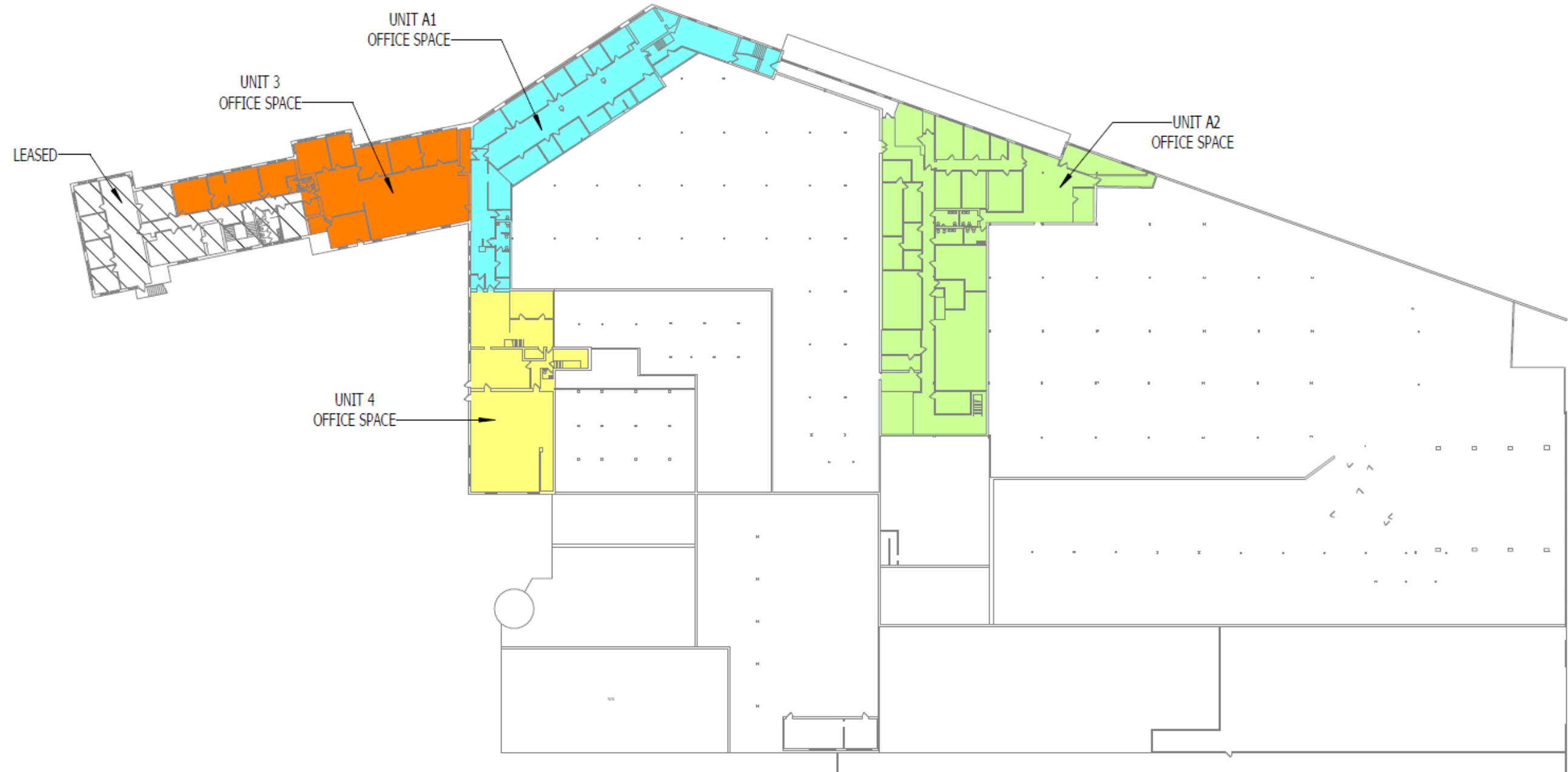
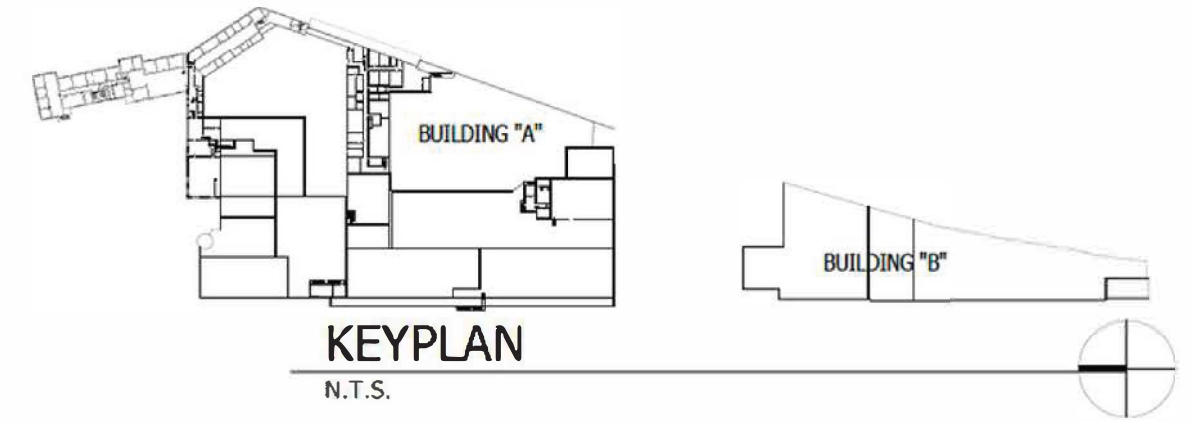
Site Map

UNIT A-1

5,328 sqft office
3 double dock doors
4 docks
16.5' to 20.8' clear height
monument signage

UNIT A-2

9,540 sqft office
8 dock doors
16' to 22' clear heights
signage visible from I-80
Rail access available



BUILDING "A" 2nd LEVEL - LEASING PLAN
N.T.S. FOOTPRINT: 157,853 SF

Site Map

UNIT B-1

40,984 sqft

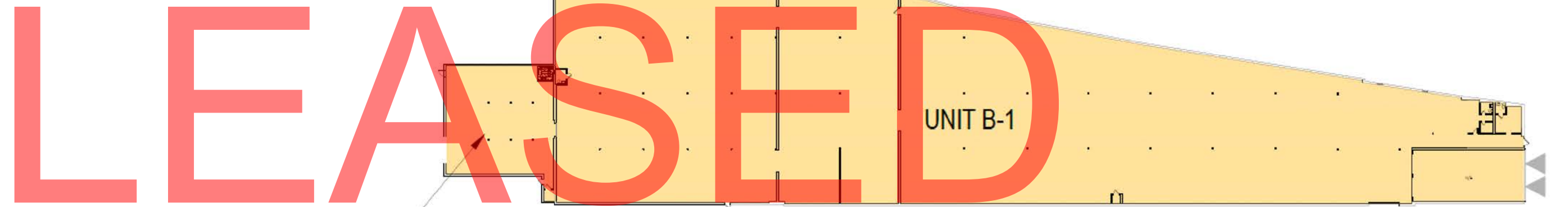
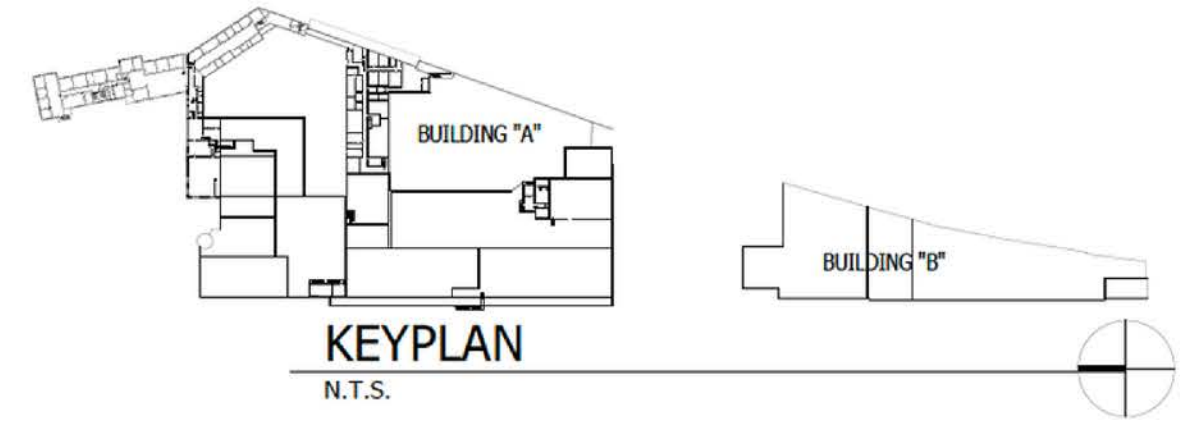
5 dock doors

1 drive in door

17.5 ft to 18.5 ft clear heights

monument signage

rail access available



BUILDING "B" - LEASING PLAN

N.T.S. FOOTPRINT: 40,984 SF



Maine
Central

Contact:
Sam Sabin
212.529.7413
ssabin@thorequities.com



THOR EQUITIES