



TURN-KEY AUTOMOTIVE SHOP

213 S. ROCK GLEN ROAD | BALTIMORE, MARYLAND 21229

FOR
SALE



MACKENZIE

COMMERCIAL REAL ESTATE SERVICES, LLC

PROPERTY OVERVIEW

HIGHLIGHTS:

- 4,200 SF \pm turn-key automotive shop
- Clear span building (15'-17' clear height)
- 6 drive-ins
 - » 10' x 10' x 4
 - » 12' x 12' x 2
- 1 crane; 4 lifts
- 2 gas-fired heaters
- LED lights
- Ceiling fan
- 2 means of ingress/egress
- Easy access to I-695 and I-95
- Close proximity to the Port of Baltimore

BUILDING SIZE:

4,200 SF \pm

LOT SIZE:

.58 ACRES \pm

CLEAR HEIGHT:

15'-17' \pm

DRIVE-INS:

6



AERIAL



DRIVE-IN

0.58 AC ±
TOTAL

S ROCK GLEN RD



GOOGLE STREET VIEW



144

FREDERICK AVE



ADDITIONAL PHOTOS



LOCAL BIRDSEYE



BALTIMORE

MOUNT SAINT JOSEPH
HIGH SCHOOL

BEECHFIELD ELEM./
MIDDLE SCHOOL

SITE

S ROCK GLEN RD

FREDERICK AVE

144

144



TRADE AREA

DRIVING DISTANCE TO:

 1.6 MILES
5 MIN. DRIVE

 2.7 MILES
6 MIN. DRIVE

 2.7 MILES
6 MIN. DRIVE

 10.8 MILES
12 MIN. DRIVE
(FAIRFIELD MARINE TERMINAL)

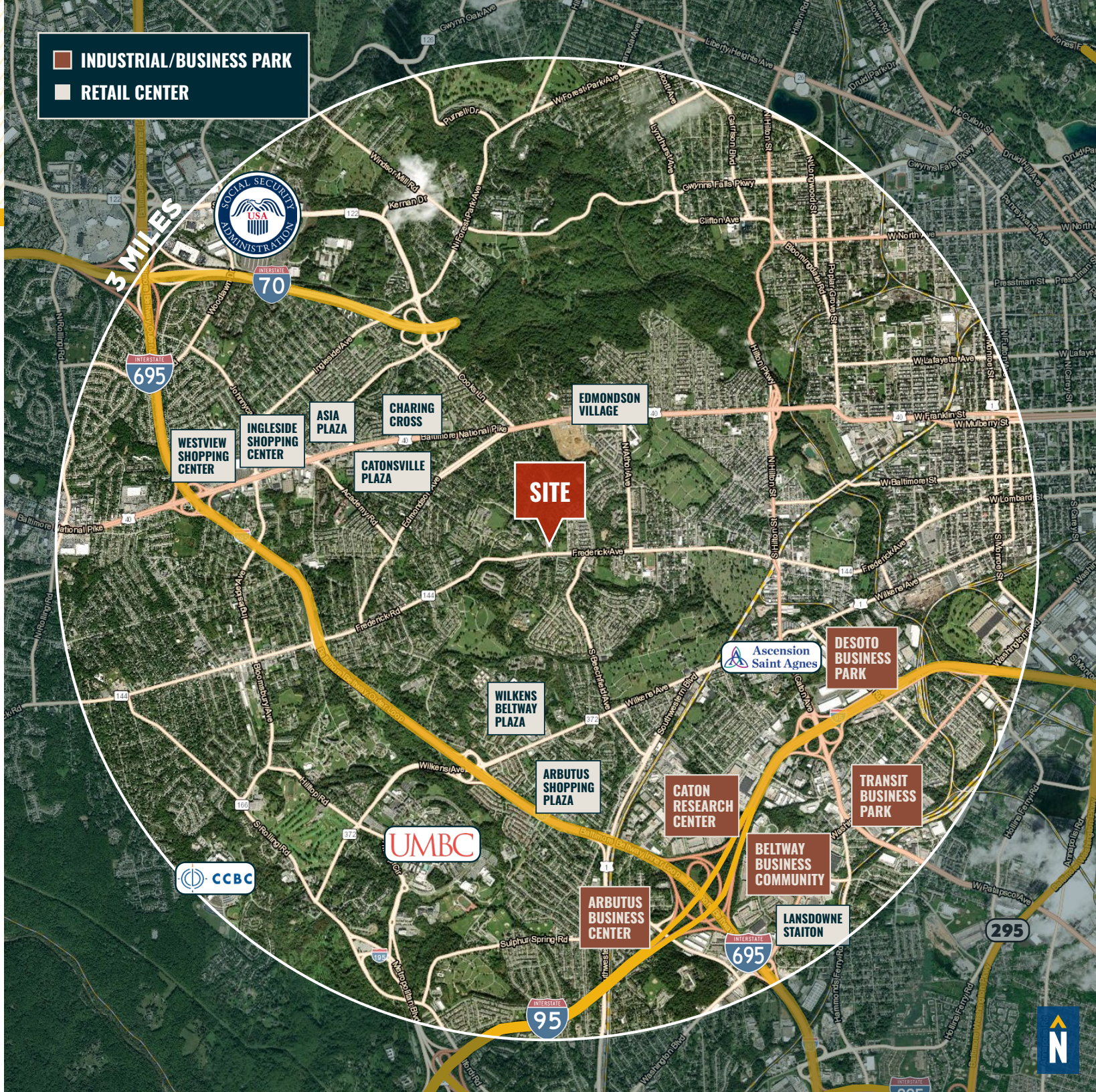
 7.8 MILES
14 MIN. DRIVE

BALTIMORE, MD 5.3 MILES
16 MIN.

WASHINGTON, DC 39.1 MILES
45 MIN.

PHILADELPHIA, PA 109.0 MILES
1 HR. 40 MIN.

RICHMOND, VA 153.0 MILES
2 HRS. 20 MIN.



FOR MORE INFO **CONTACT:**



ALTON CURRY

REAL ESTATE ADVISOR

443.841.9780

ACURRY@mackenziecommercial.com



MATTHEW CURRAN, SIOR

SENIOR VICE PRESIDENT & PRINCIPAL

443.573.3203

MCURRAN@mackenziecommercial.com



ANDREW MEEDER, SIOR

SENIOR VICE PRESIDENT & PRINCIPAL

410.494.4881

AMEEDER@mackenziecommercial.com



VISIT **PROPERTY PAGE** FOR MORE INFORMATION.



MACKENZIE

COMMERCIAL REAL ESTATE SERVICES, LLC

443-573-3200

111 S. Calvert Street
Baltimore, MD 21202

OFFICES IN: ANNAPOLIS, MD **BALTIMORE, MD** BEL AIR, MD COLUMBIA, MD LUTHERVILLE, MD CHARLOTTESVILLE, VA

www.MACKENZIECOMMERCIAL.com

No warranty or representation, expressed or implied, is made as to the accuracy of the information contained herein, and same is submitted subject to errors, omissions, change of price, rental or other conditions, withdrawal without notice, and to any specific listing conditions imposed by our principals.