

Helenberg Rd. -2 parcels

04.24.24

FOR SALE

0 Helenberg Rd.
Covington, LA 70433

Brent Cordell
KPG Realty- Cordell Eustis Group
Cordell Eustis Group
(985) 373-6417
brent@cordelleustis.com
Lic: 995690890

Jessica Keating
KPG Realty
Commercial Broker
(985) 789-4315
jessica.cordelleustis@gmail.com
Lic: 995707926



OFFERING SUMMARY

ADDRESS	0 Helenberg Rd. Covington LA 70433
ZONING	NC1 Professional Office
MARKET	New Orleans
SUBMARKET	Northshore
PRICE	\$550,000

DEMOGRAPHICS

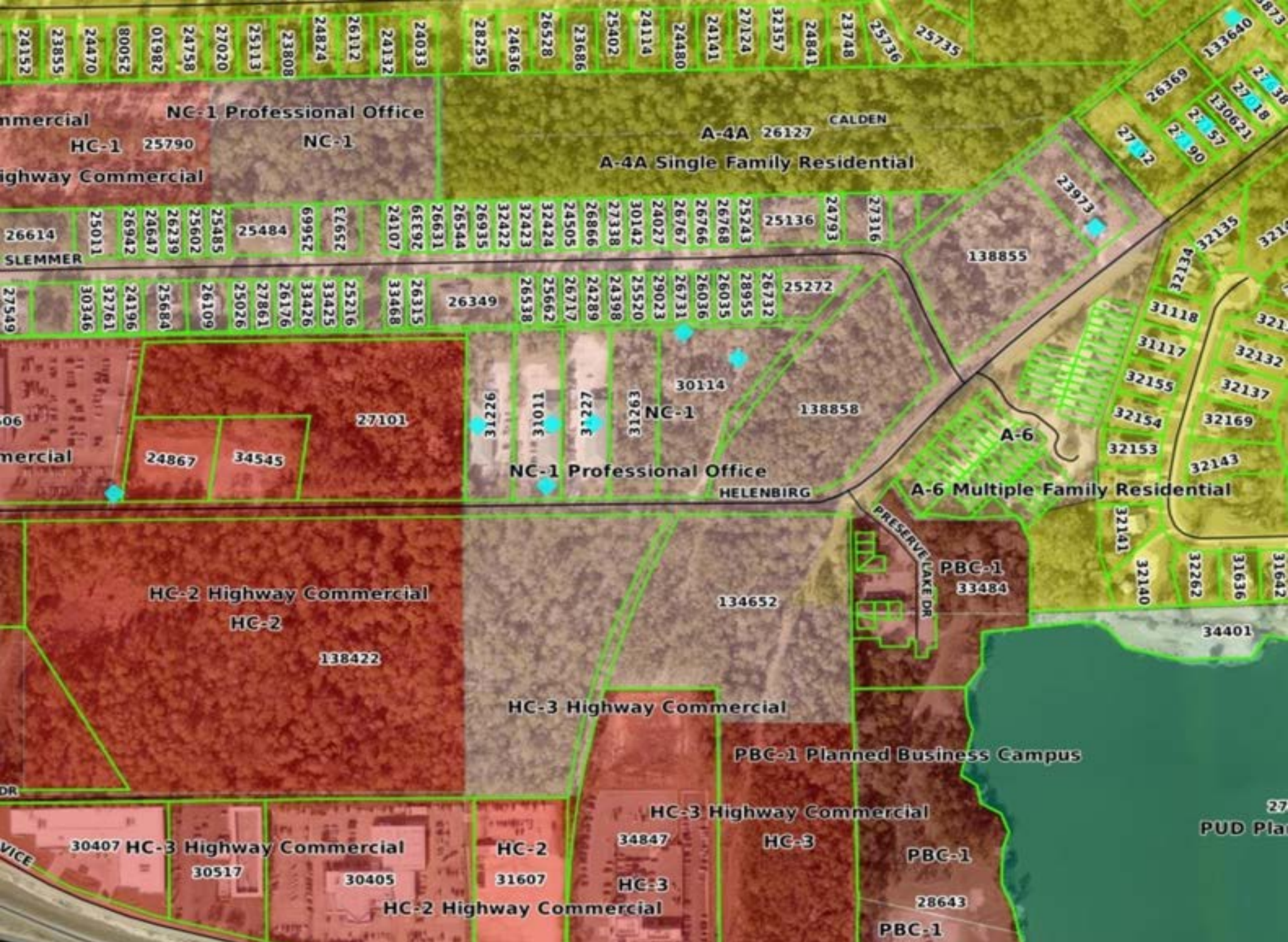
	1 MILE	3 MILE	5 MILE
2023 Population	4,883	31,724	88,641
2023 Median HH Income	\$54,811	\$73,822	\$76,122
2023 Average HH Income	\$76,103	\$115,308	\$121,290

	1 MILE	3 MILE	5 MILE
2023 Population	4,883	31,724	88,641
2023 Median HH Income	\$54,811	\$73,822	\$76,122
2023 Average HH Income	\$76,103	\$115,308	\$121,290

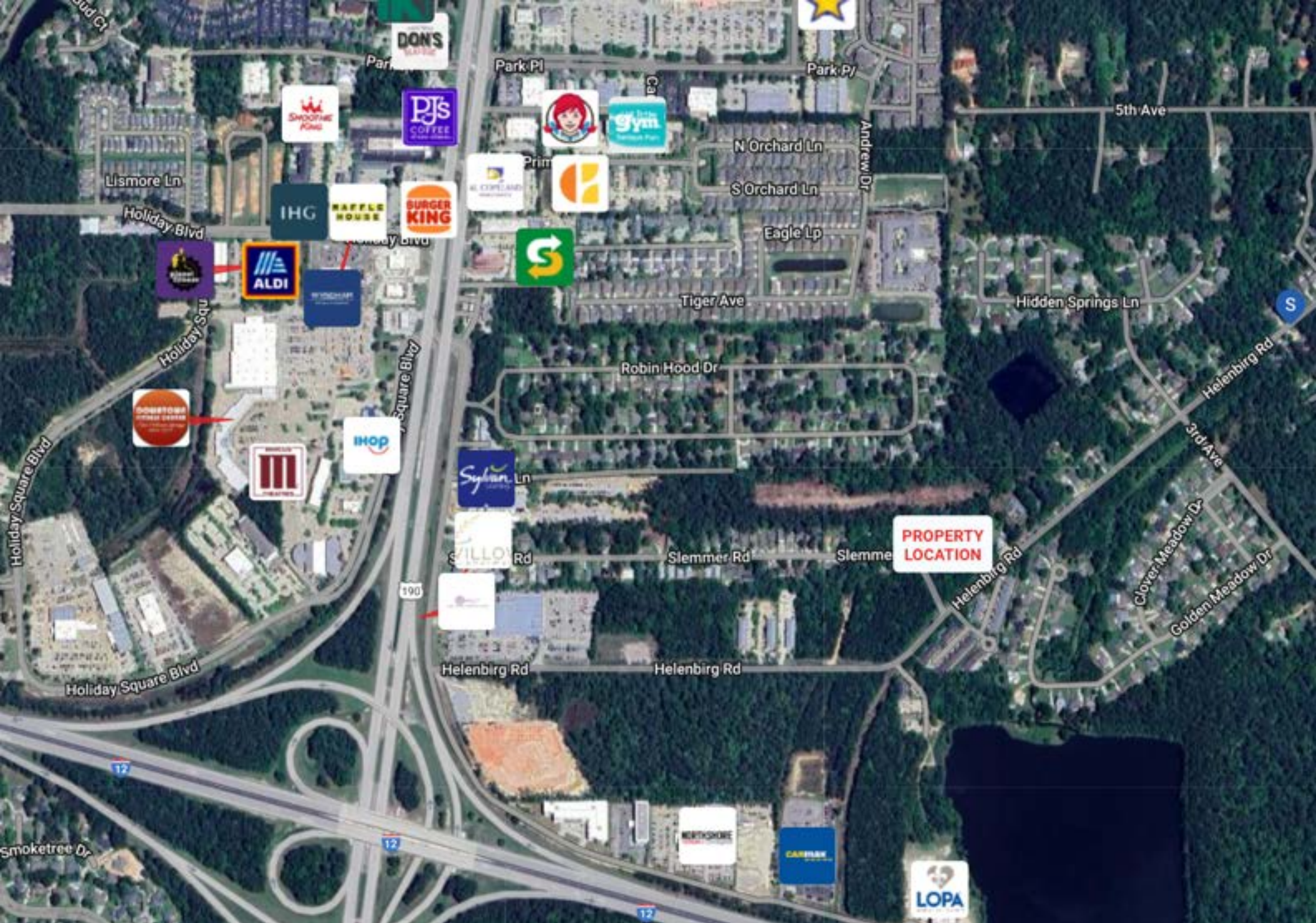
VACANT LAND FOR SALE

- 2 Parcels available on Helenberg Rd. across from the Preserve waterfront Office park and multi family apartments.
- 2.41 Acres for \$225,000
- 3.37 Acres for \$550,000
- NC-1 Zoning. Property consists of existing lots of record and could be used for residential development.
- Site has existing water and sewer through Tammany Utilities.

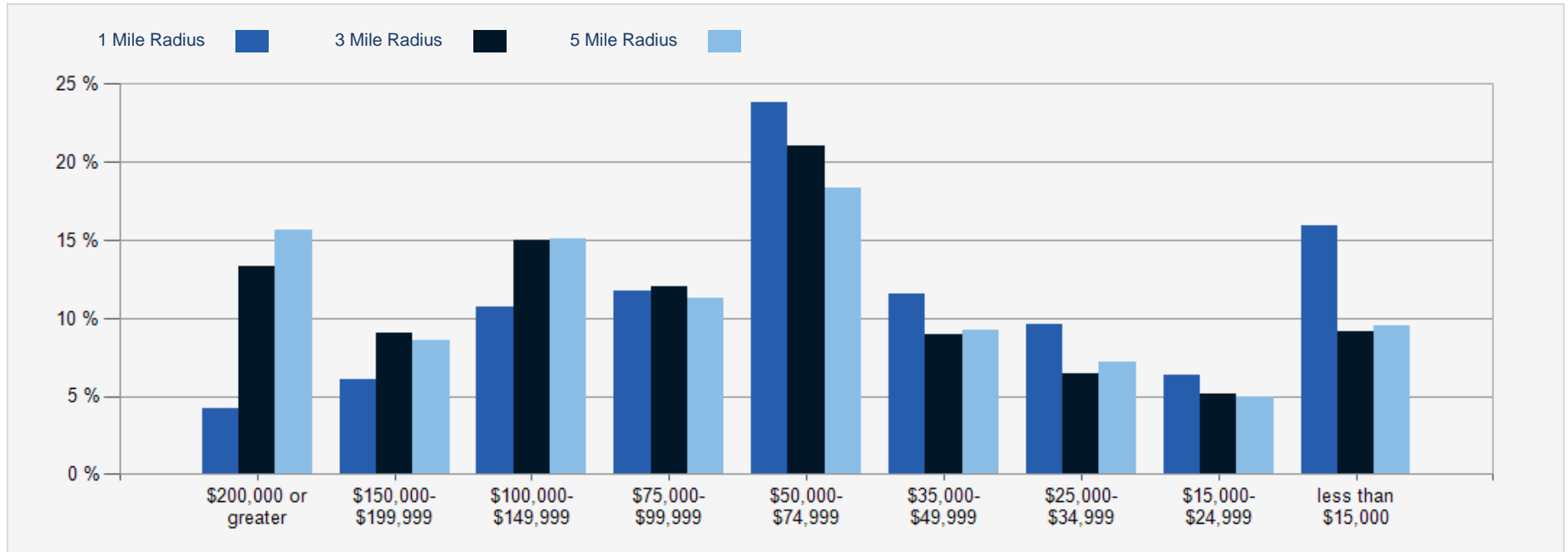




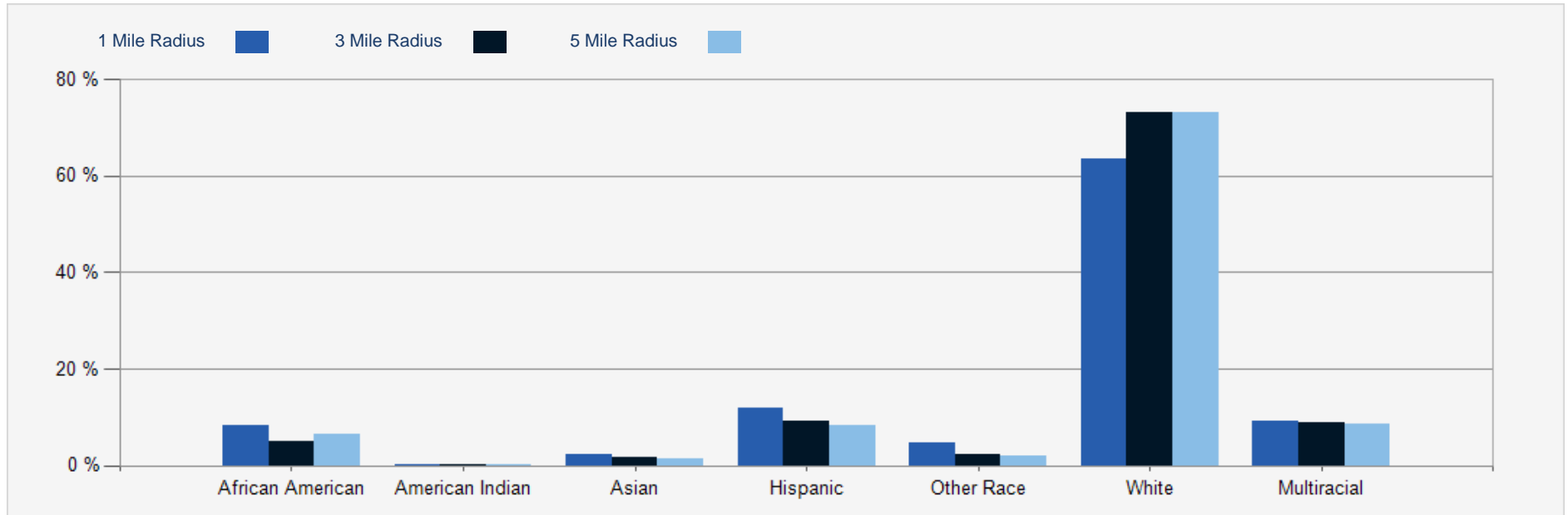




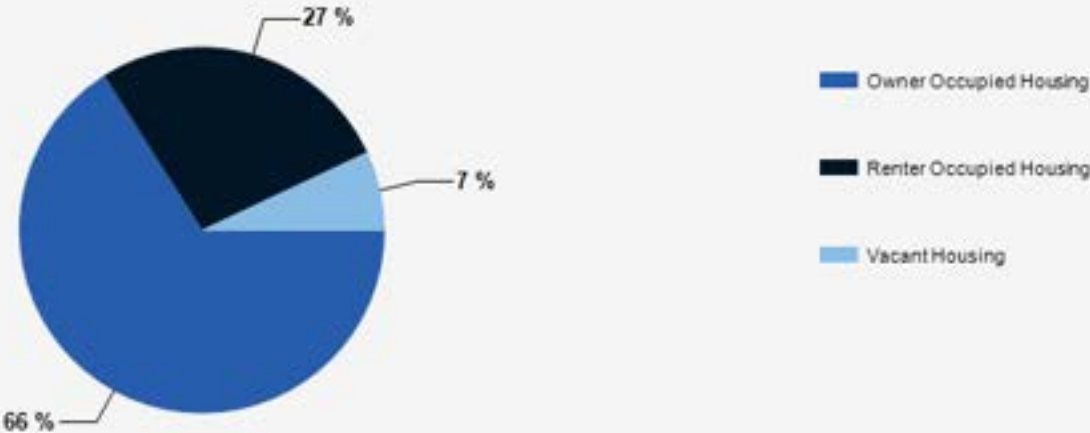
2023 Household Income



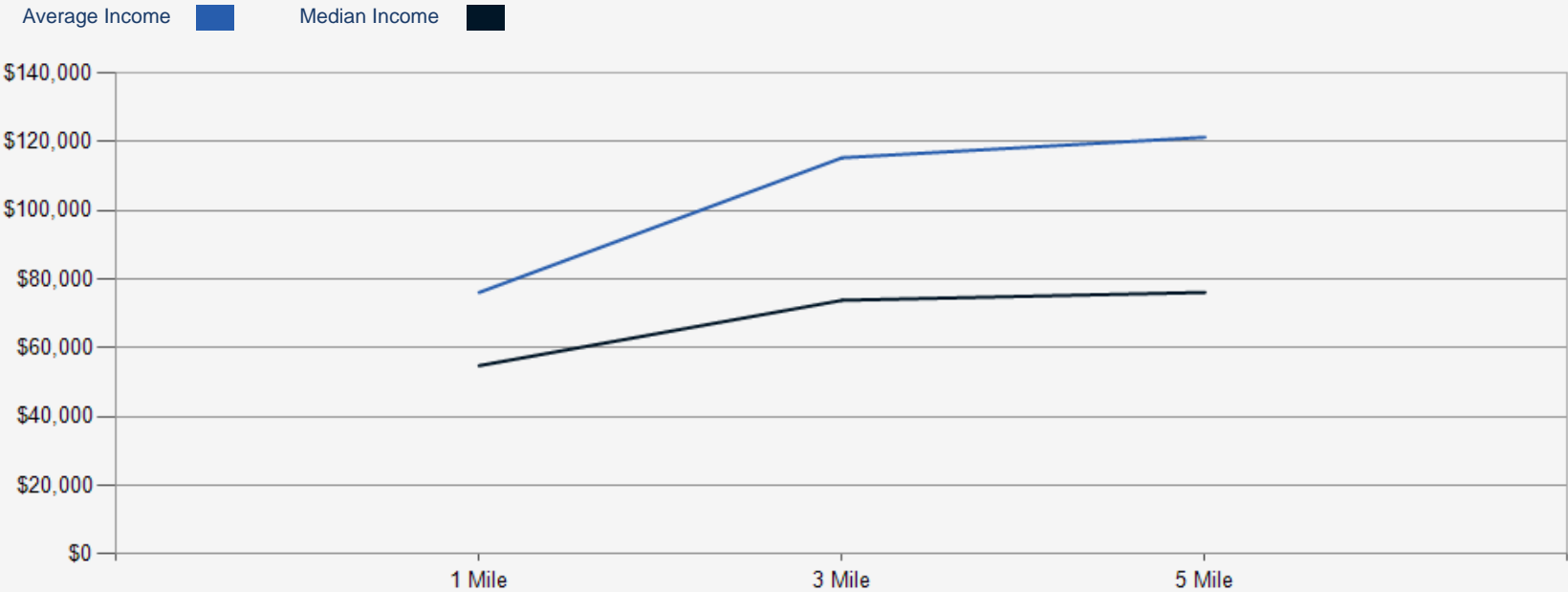
2023 Population by Race



2023 Household Occupancy - 1 Mile Radius



2023 Household Income Average and Median



Helenberg Rd. -2 parcels

CONFIDENTIALITY and DISCLAIMER

The information contained in the following offering memorandum is proprietary and strictly confidential. It is intended to be reviewed only by the party receiving it from KPG Realty- Cordell Eustis Group and it should not be made available to any other person or entity without the written consent of KPG Realty- Cordell Eustis Group.

By taking possession of and reviewing the information contained herein the recipient agrees to hold and treat all such information in the strictest confidence. The recipient further agrees that recipient will not photocopy or duplicate any part of the offering memorandum. If you have no interest in the subject property, please promptly return this offering memorandum to KPG Realty- Cordell Eustis Group. This offering memorandum has been prepared to provide summary, unverified financial and physical information to prospective purchasers, and to establish only a preliminary level of interest in the subject property.

The information contained herein is not a substitute for a thorough due diligence investigation. KPG Realty- Cordell Eustis Group has not made any investigation, and makes no warranty or representation with respect to the income or expenses for the subject property, the future projected financial performance of the property, the size and square footage of the property and improvements, the presence or absence of contaminating substances, PCBs or asbestos, the compliance with local, state and federal regulations, the physical condition of the improvements thereon, or financial condition or business prospects of any tenant, or any tenant's plans or intentions to continue its occupancy of the subject property.

The information contained in this offering memorandum has been obtained from sources we believe reliable; however, KPG Realty- Cordell Eustis Group has not verified, and will not verify, any of the information contained herein, nor has KPG Realty- Cordell Eustis Group conducted any investigation regarding these matters and makes no warranty or representation whatsoever regarding the accuracy or completeness of the information provided. All potential buyers must take appropriate measures to verify all of the information set forth herein. Prospective buyers shall be responsible for their costs and expenses of investigating the subject property.

Exclusively Marketed by:



Brent Cordell

KPG Realty- Cordell Eustis Group
Cordell Eustis Group
(985) 373-6417
brent@cordelleustis.com
Lic: 995690890



Jessica Keating

KPG Realty
Commercial Broker
(985) 789-4315
jessica.cordelleustis@gmail.com
Lic: 995707926



www.cordelleustis.com

1427 W. Causeway Approach, Mandeville, LA 70471