

Retail Space for Lease

44 W 24th Street

Flatiron District, New York, NY

Location:

Between Fifth Avenue & Sixth Avenue

Retail Space:

Total: 12,690 SF

Ground Floor: 6,530 SF

Mezzanine Floor: 1,060 SF

Lower Level: 5,100 SF

Frontage:

75 FT on West 24th Street

Ceiling Heights:

Ground Floor: 15 FT

Mezzanine Floor: 8 FT

Lower Level: 10 FT

Price:

Upon request

Highlights:

- Landlord can deliver a custom build-out for Tenant
- Down the block from Madison Square Park
- 23rd Street F, M & PATH - 1 minute walking distance
- 23rd Street N, Q, R, & W - 2 minutes walking distance



Local Attractions:

TRADER JOE'S

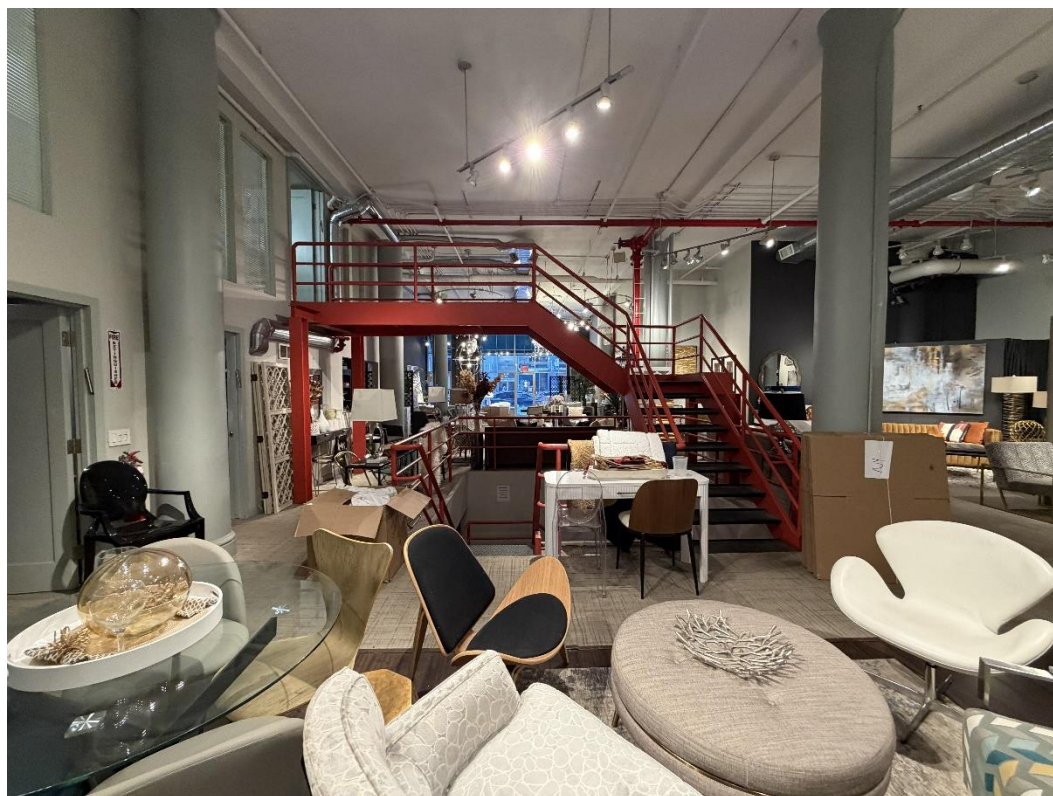
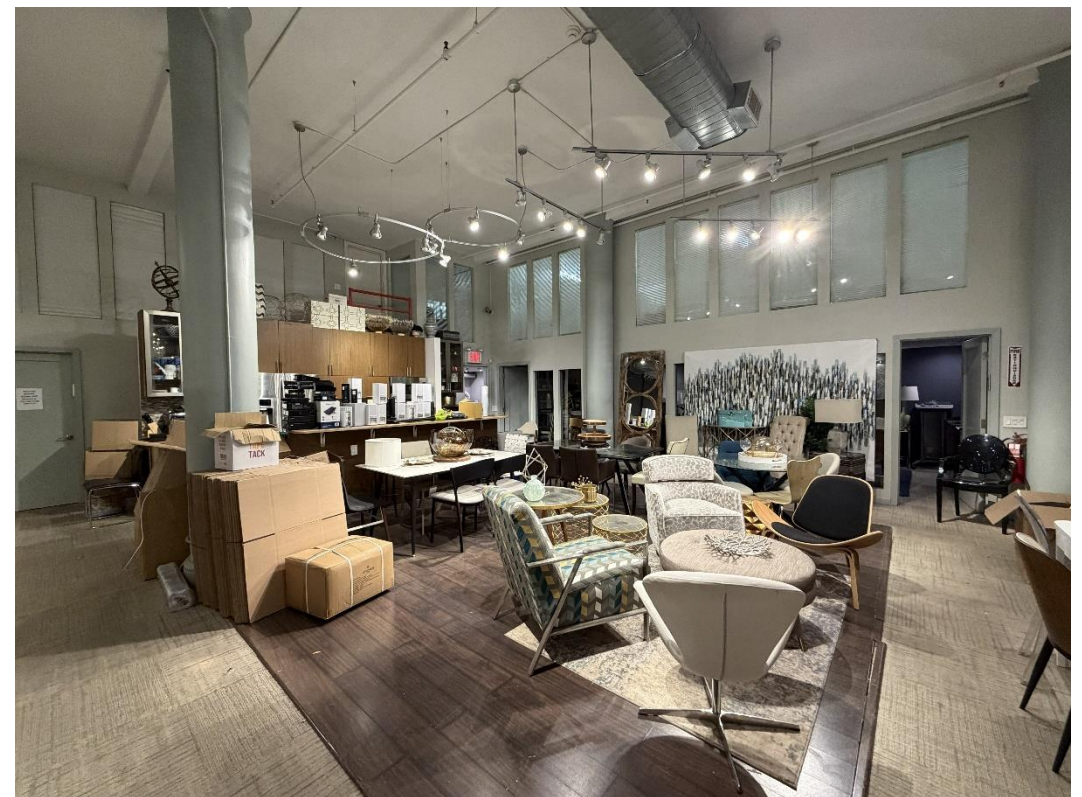


**Call/Text:
516 350 2621**

44 W 24th Street

Flatiron District, New York, NY

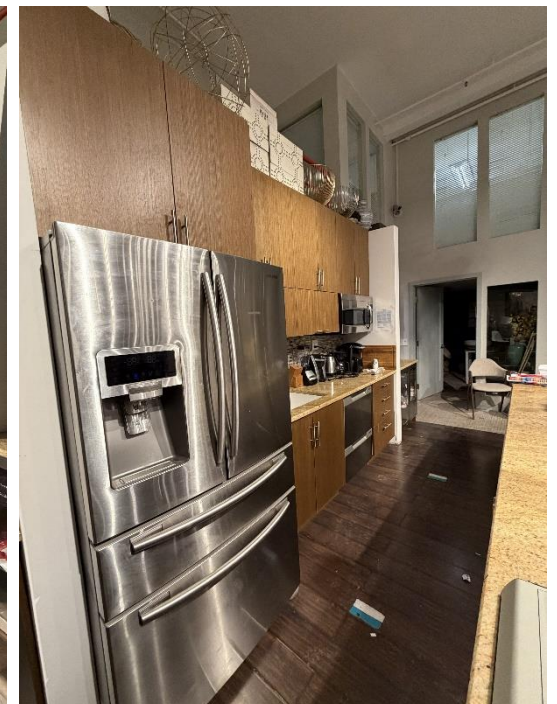
Ground Floor Photos



44 W 24th Street

Flatiron District, New York, NY

Ground Floor Photos



44 W 24th Street

Mezzanine & Lower Level Photos

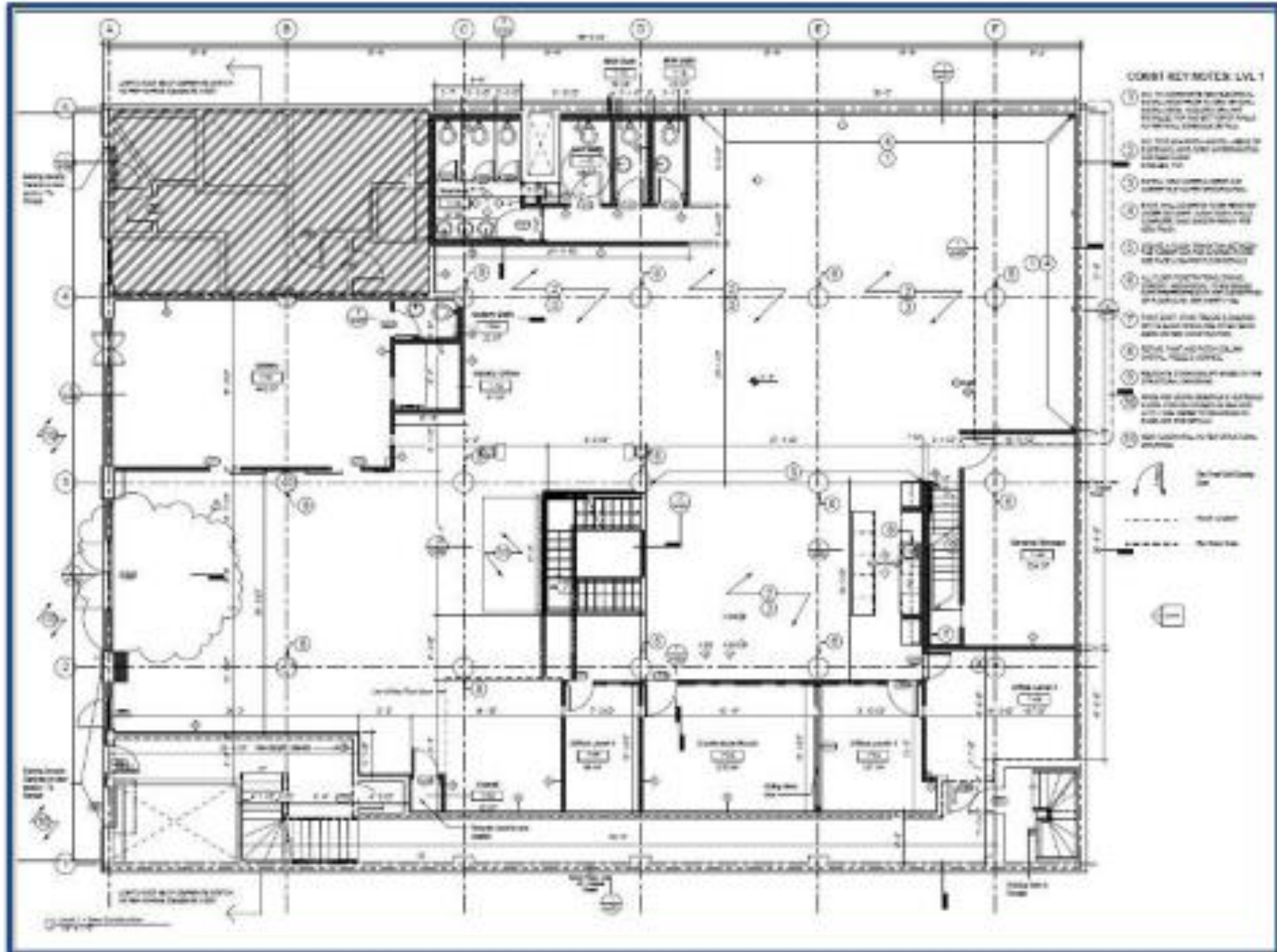
Flatiron District, New York, NY



44 W 24th Street

Flatiron District, New York, NY

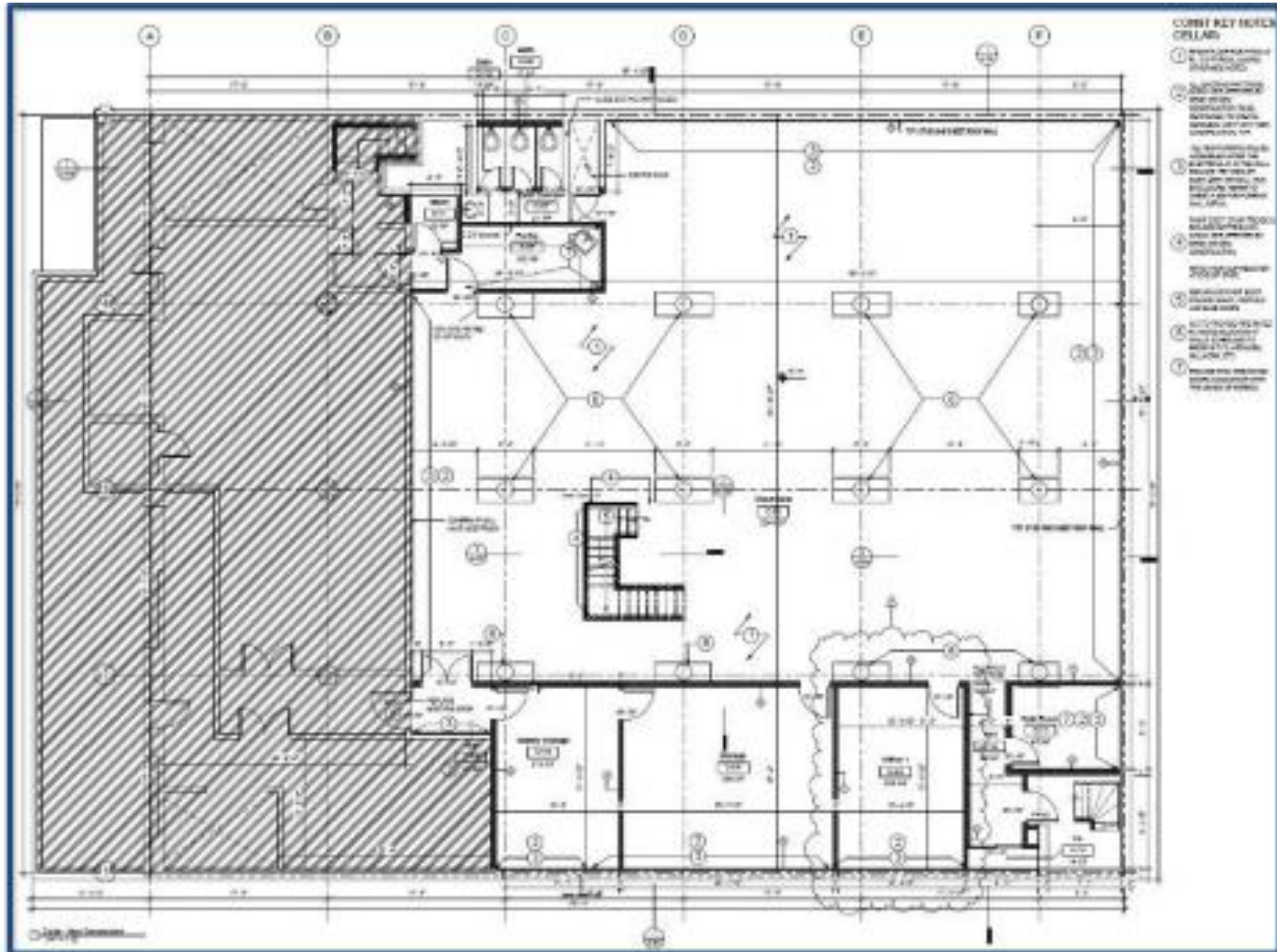
Ground Floor Floorplan



44 W 24th Street

Flatiron District, New York, NY

Lower Level Floorplan



CONTACT

JOSH SLOAN

516-350-2621

JS@SLOAN-RE.COM