



# Chesapeake Station

7863-7955 BAYSIDE ROAD, CHESAPEAKE BEACH, MD 20732

## OVERVIEW

Situated near the shores of the Chesapeake Bay, the Chesapeake Station shopping center is the dominant grocery-anchored center in the community.

### SPACE AVAILABLE

2,000 – 2,440 sq. ft.

### CENTER TYPE

Neighborhood

### GROSS LEASABLE AREA

42,130 sq. ft.

### COUNTY

Calvert

### TRAFFIC COUNT

Bayside Road – 14,511 VPD

## CURRENT RETAILERS



## CHESAPEAKE STATION

7863-7955 BAYSIDE ROAD, CHESAPEAKE BEACH, MD 20732

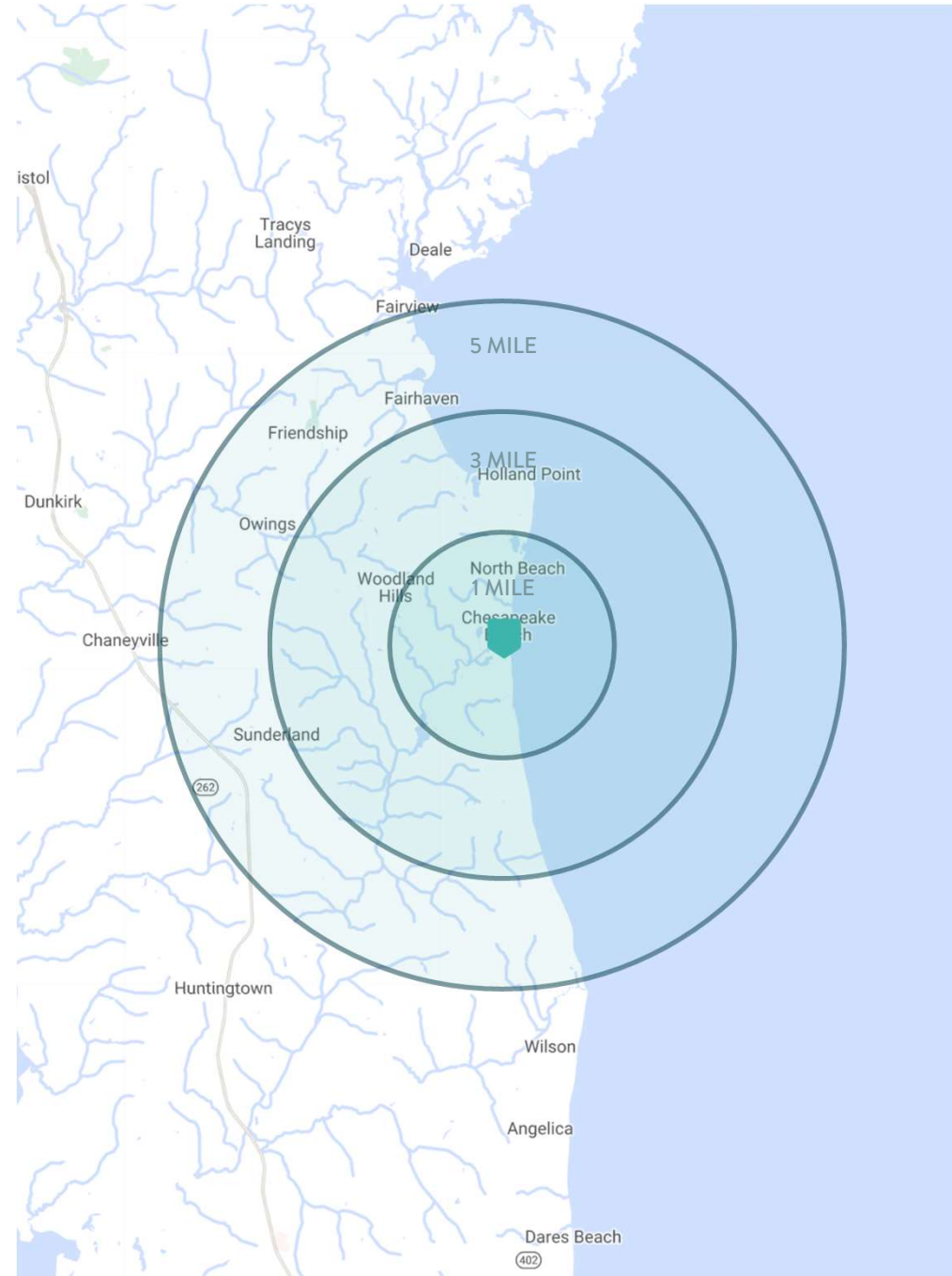
## CONTACT US

301.657.7330

[leasing@willardretail.com](mailto:leasing@willardretail.com)

[willardretail.com](http://willardretail.com)





## DEMOGRAPHICS

1, 3, 5-MILE RADIUS



RADIUS



HH INCOME



MEDIAN AGE



HOUSEHOLDS



POPULATION

RADIUS	HH INCOME	MEDIAN AGE	HOUSEHOLDS	POPULATION
1 Mile	\$120,951	37.6	2,085	5,459
3 Mile	\$121,966	39.0	6,155	16,377
5 Mile	\$134,224	41.4	9,227	25,386

# CHESAPEAKE STATION

7863-7955 BAYSIDE ROAD, CHESAPEAKE BEACH, MD 20732

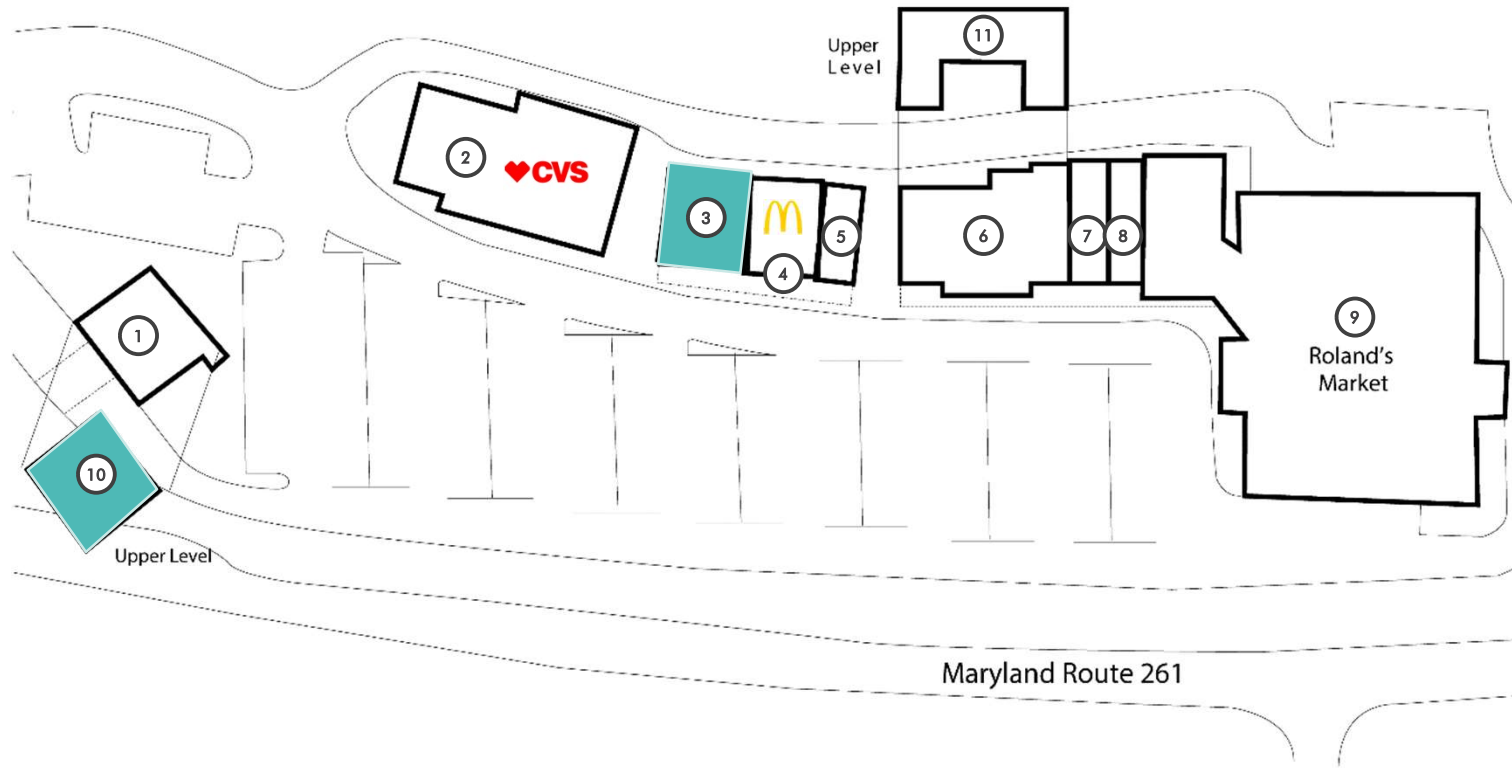
## CONTACT US

301.657.7330  
[leasing@willardretail.com](mailto:leasing@willardretail.com)  
[willardretail.com](http://willardretail.com)



# CHESAPEAKE STATION

## SITE PLAN



SUITE	TENANT	SF
1	PNC BANK	2,362 SF
2	CVS	6,646 SF
3	AVAILABLE	2,000 SF
4	MCDONALD'S	2,000 SF
5	SUBWAY	1,000 SF
6	POST OFFICE	4,555 SF
7	DOMINOS	1,314 SF
8	LITTLE PANDA	1,314 SF
9	ROLAND'S SUPERMARKET	16,675 SF
10	AVAILABLE	2,440 SF
11	CNC PRODUCTIONS	1,974 SF

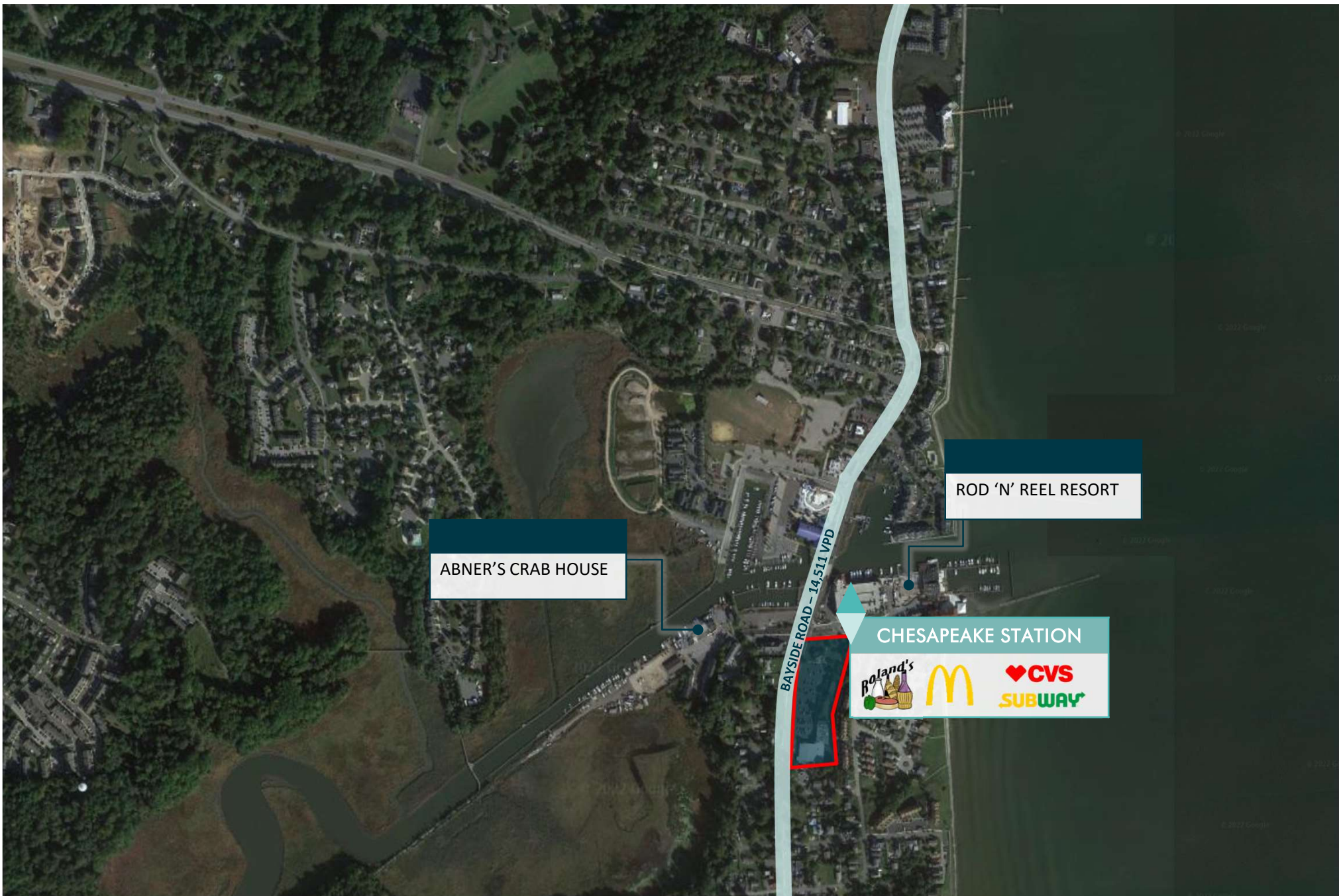
# CHESAPEAKE STATION

7863-7955 BAYSIDE ROAD, CHESAPEAKE BEACH, MD 20732

## CONTACT US

301.657.7330  
[leasing@willardretail.com](mailto:leasing@willardretail.com)  
[willardretail.com](http://willardretail.com)





# CHESAPEAKE STATION

7863-7955 BAYSIDE ROAD, CHESAPEAKE BEACH, MD 20732

## CONTACT US

301.657.7330  
leasing@willardretail.com  
willardretail.com





**WILLARD**

**WILLARDRETAIL.COM**

4800 Hampden Lane | Suite 800 | Bethesda, MD 20814

**301.657.7330**