

±10.1 AC RETAIL DEVELOPMENT

7855-7915 BOYNTON BEACH BLVD, BOYNTON BEACH, FL 3343
(PALM BEACH COUNTY)

FOR LEASE



AVAILABLE SPACE

OP-1	±1.50 AC (proposed gas/c-store)
OP-2	±1.00 AC (proposed bank/QSR)
OP-3	±4.24 AC (proposed retail/hotel)
OP-4	±3.27 AC (proposed self-storage)

PROPERTY HIGHLIGHTS

- ☐ ±10.1 AC retail development
- ☐ Traffic lighted intersection at the NWC of Boynton Beach Blvd & Orchid Grove Trail
- ☐ Across from Target & Bethesda Community Health
- ☐ New Whole Foods development located just east
- ☐ Heavily travelled corridor in close proximity to FL Turnpike

TRAFFIC COUNTS

54,500 AADT on Boynton Beach Blvd
94,700 AADT on Florida's Turnpike

DEMOGRAPHICS

	1 Mile	3 Mile	5 mile
Population	7,613	73,655	176,608
Households	3,444	30,496	75,340
Avg HH Income	\$103,661	\$111,384	\$104,908

TENANTS IN IMMEDIATE AREA



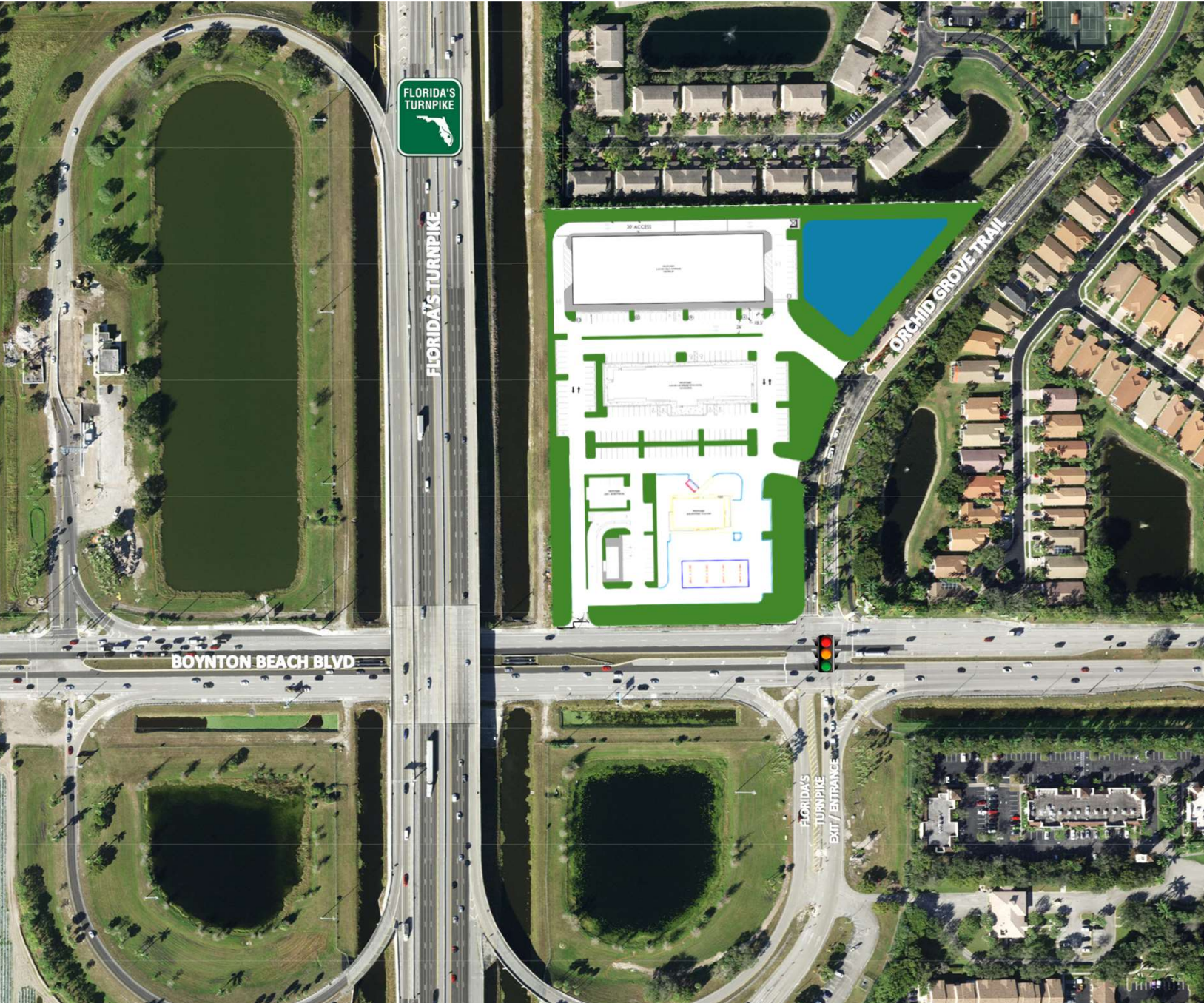
SOUTHEAST RETAIL ADVISORS

CONTACT INFO
LINDSEY MEYERS, Principal | Broker
✉ Lindsey@sracre.com
☎ 404.556.4960

851 Broken Sound Parkway NW, Suite 160, Boca Raton, FL 33487 | www.sracre.com

*The information herein was obtained from third parties. Any and all interested parties should have their choice of experts inspect the property and verify all information. Southeast Retail Advisors, Inc. makes no warranties or guarantees as to the information given to any prospective Buyer or Tenant.

AERIAL SITE PLAN – PROPOSED

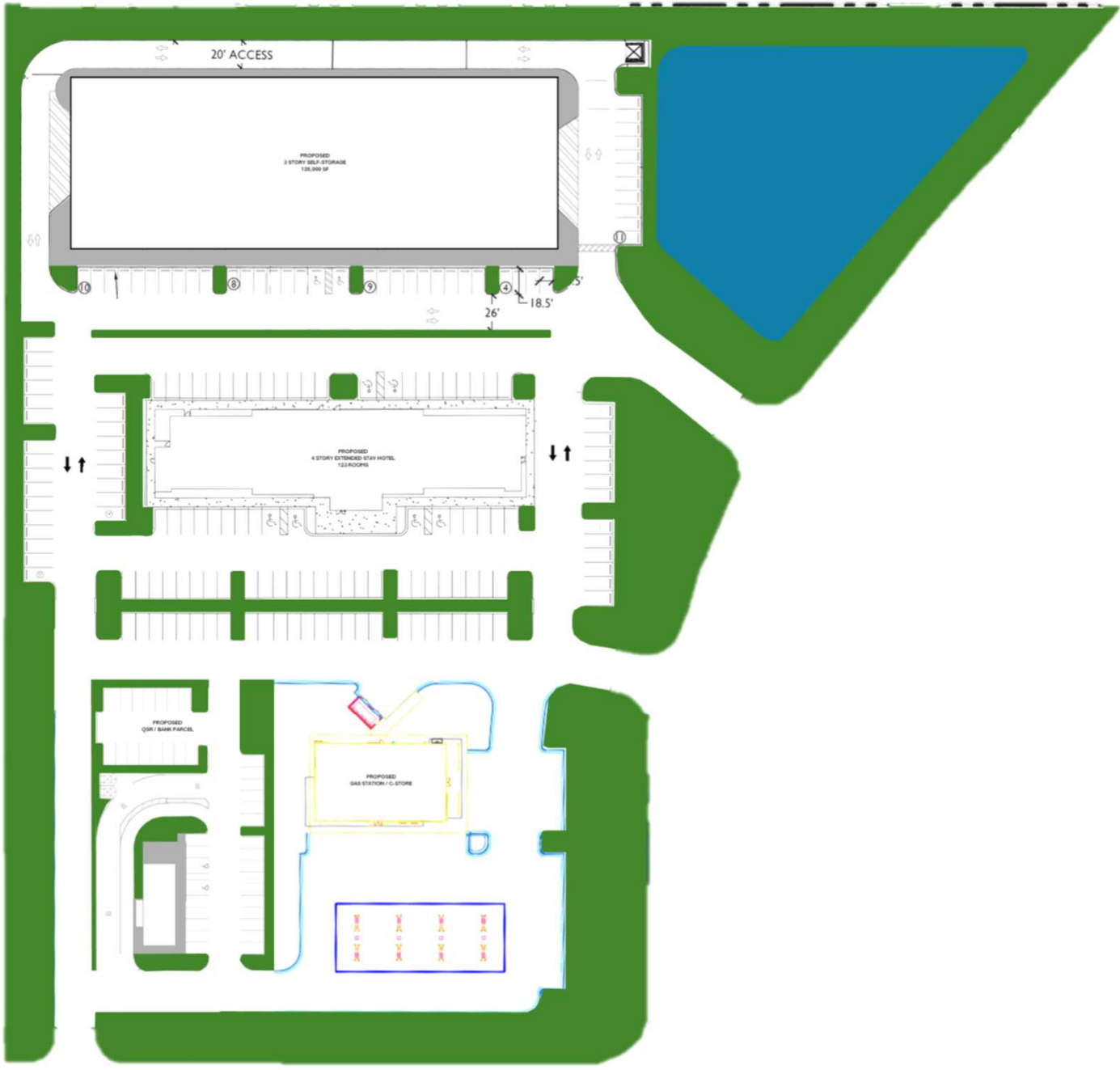


**SOUTHEAST
RETAIL ADVISORS**

CONTACT INFO
LINDSEY MEYERS, Principal | Broker
✉ Lindsey@sracre.com
☎ 404.556.4960

851 Broken Sound Parkway NW, Suite 160, Boca Raton, FL 33487 | www.sracre.com
*The information herein was obtained from third parties. Any and all interested parties should have their choice of experts inspect the property and verify all information. Southeast Retail Advisors, Inc. makes no warranties or guarantees as to the information given to any prospective Buyer or Tenant.

SITE PLAN – PROPOSED



AERIAL

