



**Lease Rate:**  
**\$20.00 SF nnn**

**FOR LEASE**

**2250 Southgate Boulevard (Unit D)**  
**Murfreesboro, TN 37128**

**Jerry Miele, MBA, SIOR**  
Principal & Executive V.P.  
Dir. 615 850 2735  
[jerry.miele@colliers.com](mailto:jerry.miele@colliers.com)

**Ben Maude**  
Associate  
Mobile 781 534 8068  
[ben.maude@colliers.com](mailto:ben.maude@colliers.com)

**Colliers Nashville**  
615 3rd Avenue South  
Suite 500  
Nashville, TN 37210  
Main: 615 850 2700  
[colliers.com](http://colliers.com)



1,000 SF total



425 SF office space



Climate-controlled warehouse



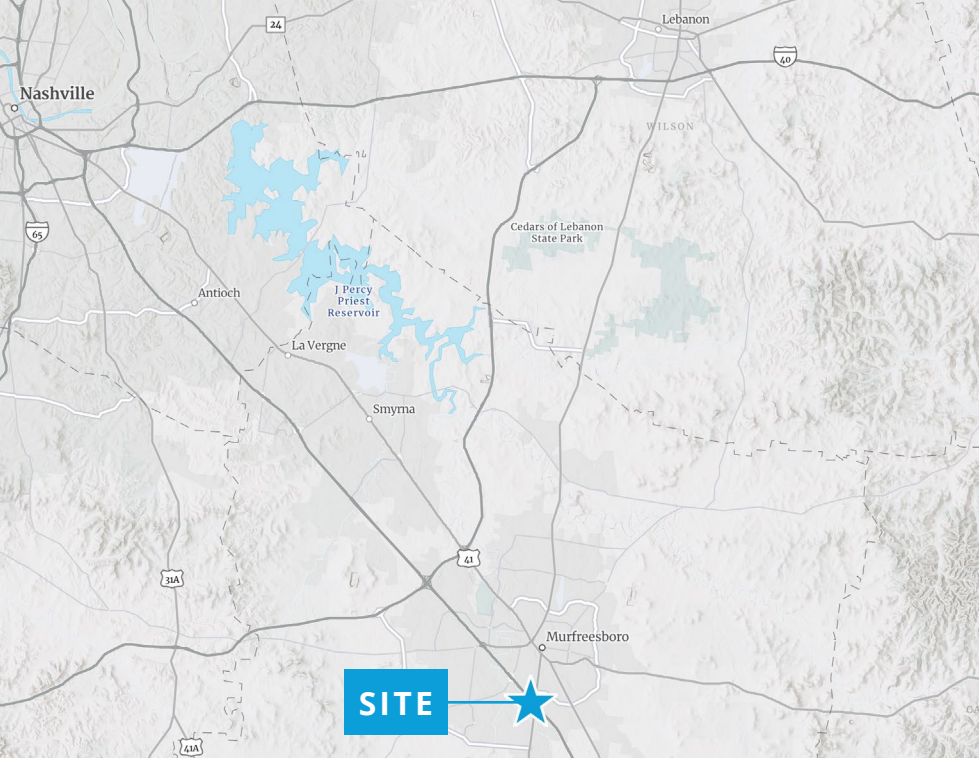
12'-13' clear height



10' x 10' drive-in door

This document has been prepared by Colliers for advertising and general information only. Colliers makes no guarantees, representations or warranties of any kind, expressed or implied, regarding the information including, but not limited to, warranties of content, accuracy and reliability. Any interested party should undertake their own inquiries as to the accuracy of the information. Colliers excludes unequivocally all inferred or implied terms, conditions and warranties arising out of this document and excludes all liability for loss and damages arising there from. This publication is the copyrighted property of Colliers and /or its licensor(s). © 2025. All rights reserved. Colliers Nashville, LLC





**2250 Southgate Blvd  
Murfreesboro, TN**

#### CONTACT US

##### **Jerry Miele, MBA, SIOR**

Principal & Executive V.P.  
Dir. 615 850 2735  
[jerry.miele@colliers.com](mailto:jerry.miele@colliers.com)

##### **Ben Maude**

Associate  
Mobile 781 534 8068  
[ben.maude@colliers.com](mailto:ben.maude@colliers.com)

**Colliers Nashville**  
615 3rd Avenue South  
Suite 500  
Nashville, TN 37210  
Main: 615 850 2700  
[colliers.com](http://colliers.com)



Accelerating success.