

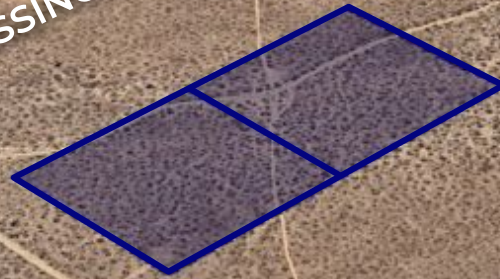


RESIDENTIAL LAND FOR SALE



VICTOR ST

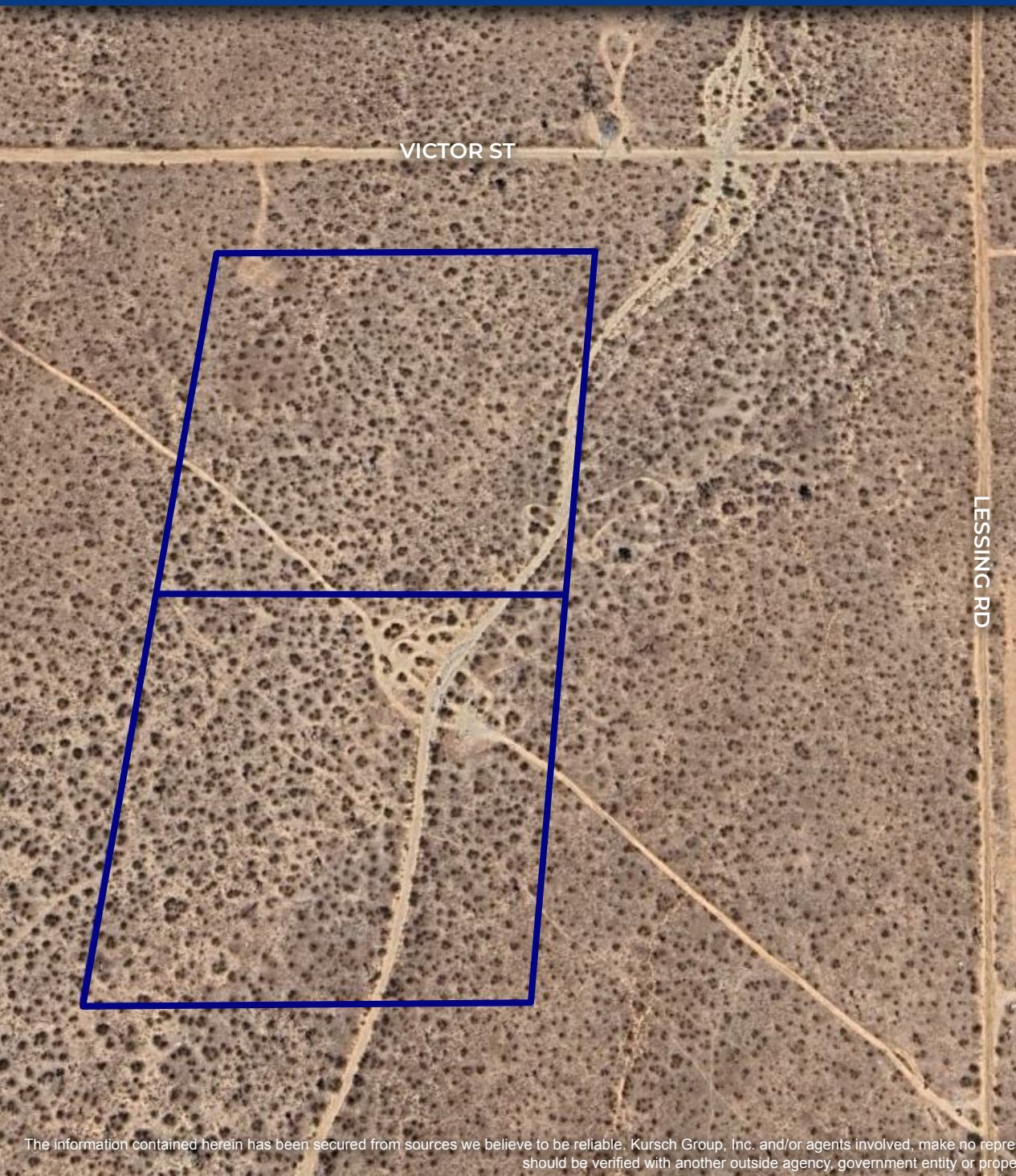
LESSING RD



±20 AC Lessing Rd.
Phelan, CA

SITE OVERVIEW

±20 Acres | Lessing Road

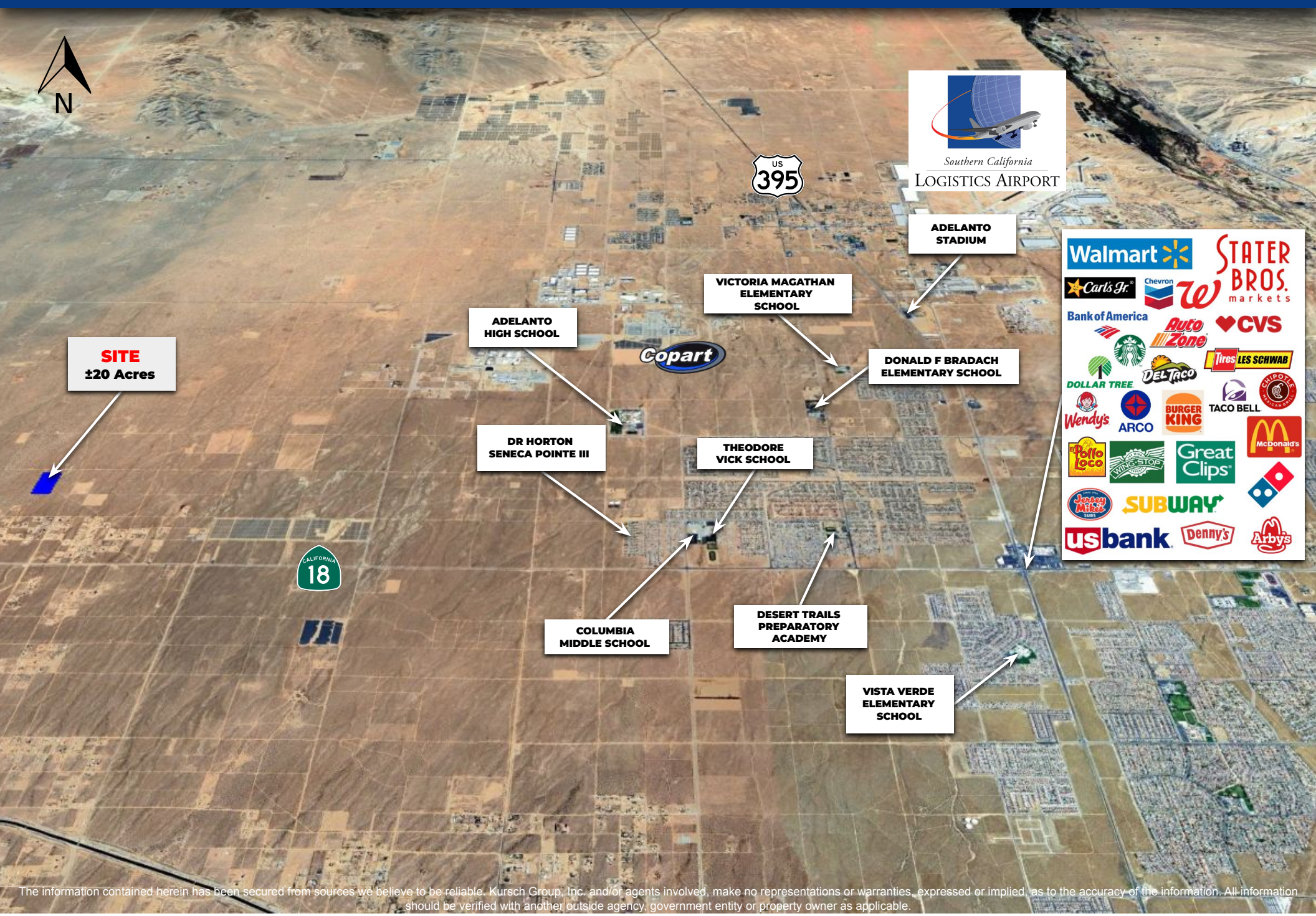


Site Attributes

- APNs 3102-071-03 & 08
- Zoned PH/RL-5 - Phelan/Pinon Hills Rural Living (5-Acre Minimum)
- Two contiguous parcels totalling approximately ±20 Acres (±871,200 sf)
- Water and power lines approximately ±1,340 feet to the south; buyer to verify
- Relatively flat topography
- Situated approximately $\frac{3}{4}$ mile from CA-18/Palmdale Rd., providing easy access to shopping and dining amenities at the intersection of CA-18 and US-395.
- Asking \$95,000.00

AREA OVERVIEW

±20 Acres | Lessing Road



PLAT MAP

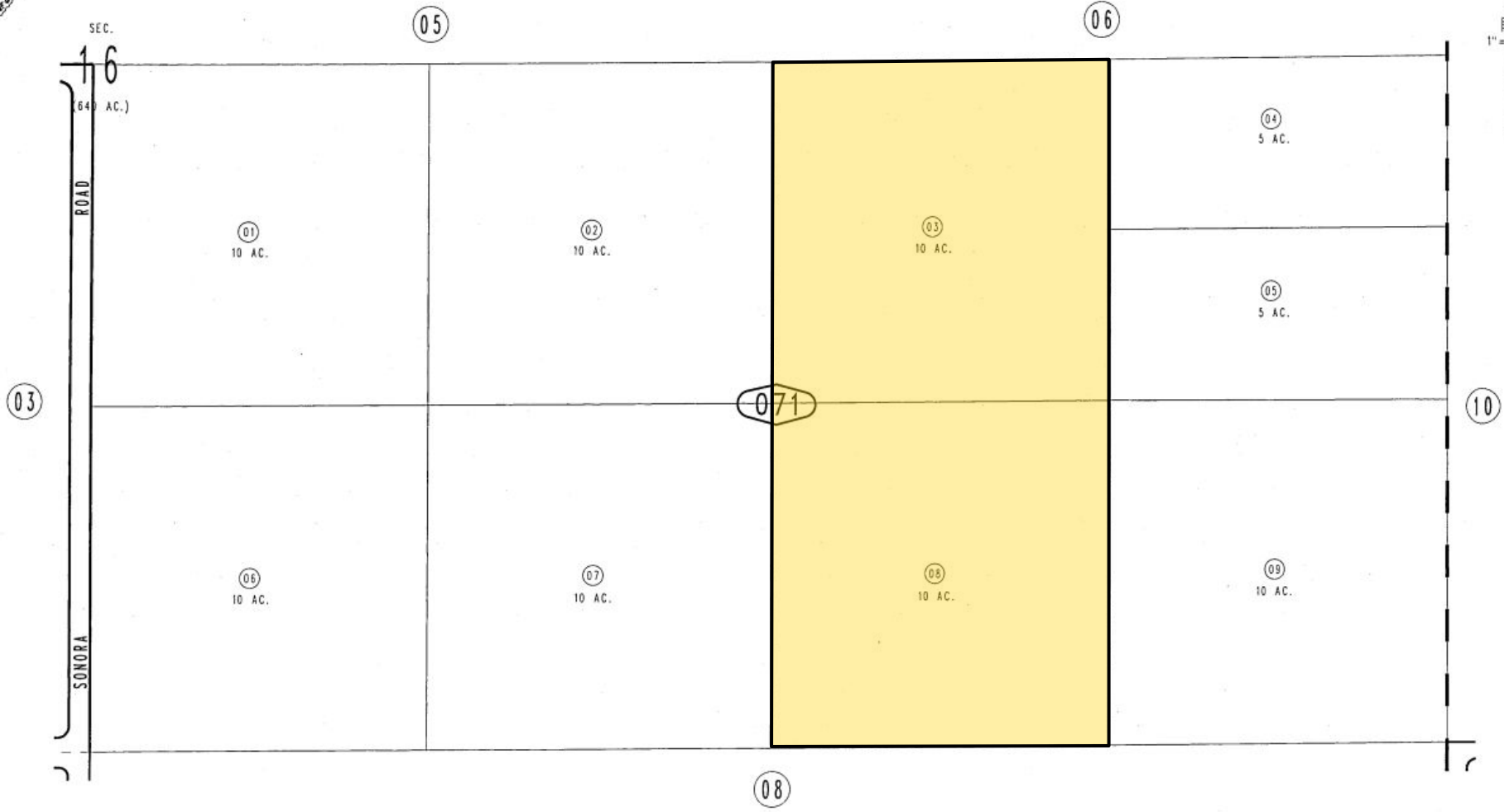
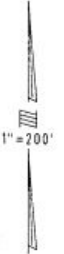
±20 Acres | Lessing Road

THIS MAP IS FOR THE PURPOSE
OF AD VALOREM TAXATION ONLY.

N. 1/2, S.E. 1/4, Sec. 16, T.5N., R.6W., S.B.M.

Adelanto Out
Tax Rate Area
51010

3102 - 07



OCT. 1987

Assessor's Map
Book 3102 Page 07
San Bernardino County

REVISED
03/11/10 LH



12180 Ridgecrest Rd. Ste. 232
Victorville, CA 92395
760.983.2383 | www.kurschgroup.com

Aiden Schmidt
Sales Associate

aschmidt@kurschgroup.com
Direct: 760.983.2592
DRE # 02201573