



CLARION PARTNERS

For Lease or For Sale

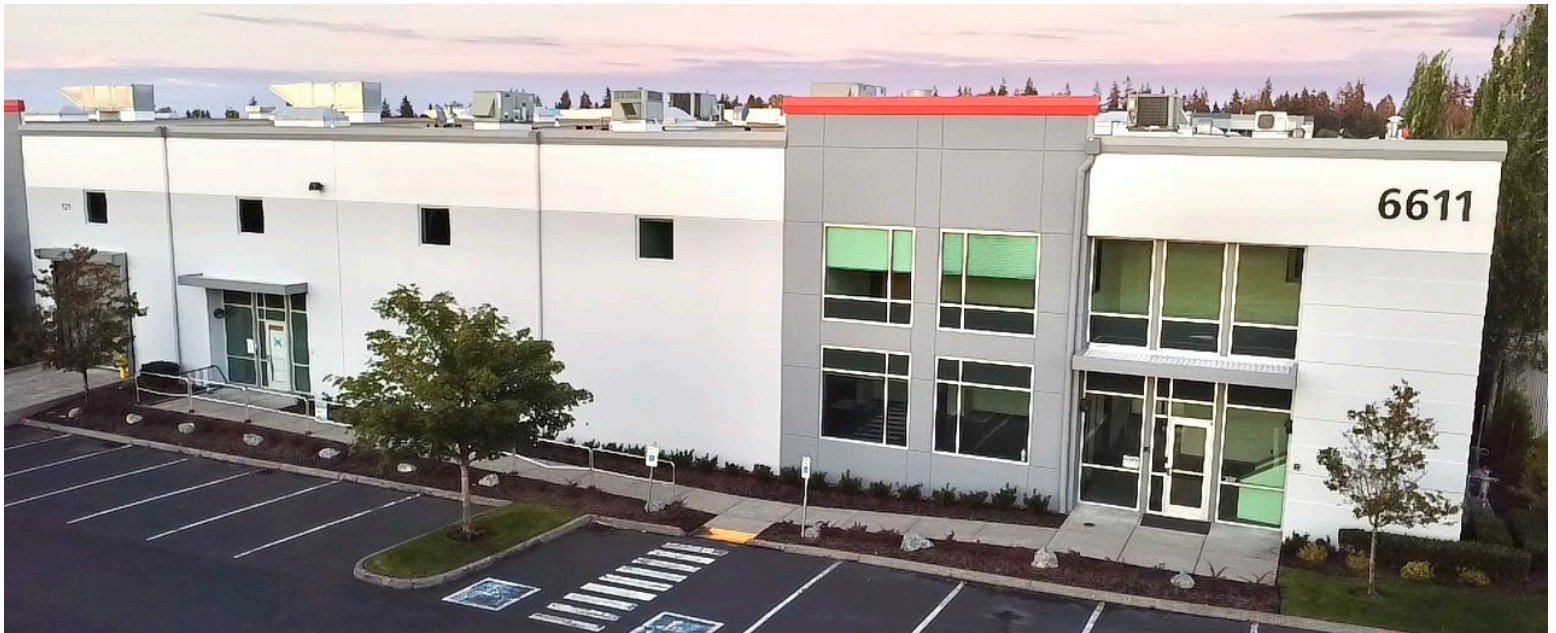
Exclusively listed by:

Colliers

Everett Commerce Center – Building A

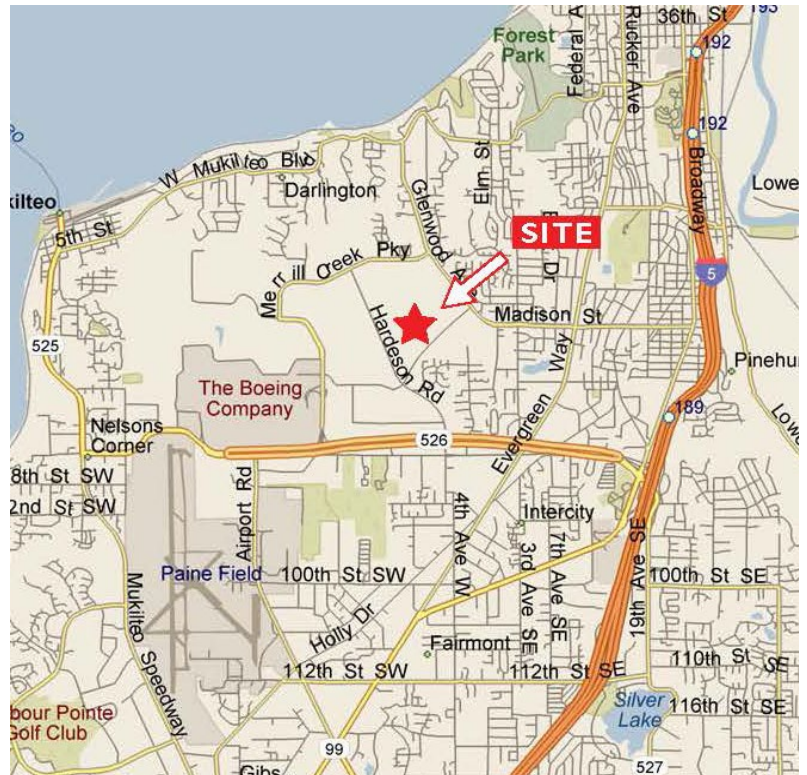
6611 Associated Blvd.
Everett, WA 98203z

New Market Ready Improvements to the Office & Warehouse Areas



BUILDING HIGHLIGHTS

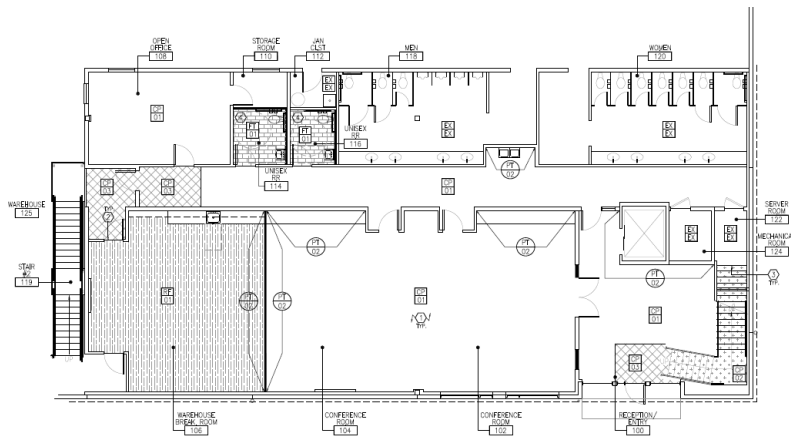
- 91,544 SF total
 - 9,760 SF office / 81,784 SF warehouse
- See page 2 for Virtual Tours of office space
- 24' clear height
- Sprinklered
- 17 dock high doors
- 7 grade-level doors (each 12'x14')
- 480 volts/1200 amps 3 phase service
- Fully temperature-controlled warehouse area
- 47' x 50' typical column spacing
- 1.67 parking stalls per 1,000 SF
- Available immediately
- Contact brokers for rates





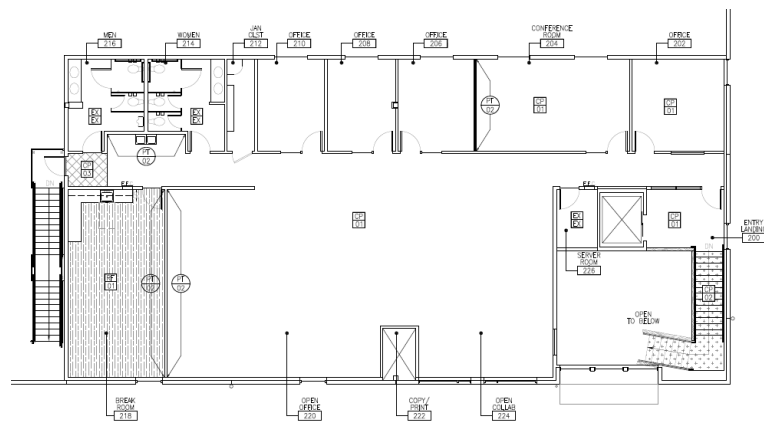
CLARION PARTNERS

Everett Commerce Center – Building A



First Floor Office

[View Virtual Tour](#)



Second Floor Office

[View Virtual Tour](#)



CLARION PARTNERS

Everett Commerce Center – Building A



This information contained herein was obtained from sources deemed reliable and is believed to be true. It has not been verified and as such, cannot be warranted nor form any part of any future contract.



CLARION PARTNERS

Everett Commerce Center – Building A



PROPERTY HIGHLIGHTS

- Located in the popular Seaway Business Center next to Boeing's Everett facility
- Convenient access to SR 526, I-5, and many nearby amenities
- Business friendly City of Everett
- Within 10 minutes of Paine Field Airport
- Corporate neighbors include Boeing, Amazon, Seattle Genetics, Helion, Food Services of America, Aviation Technical Services and Fluke

Derek Heed
425.453.3133
derek.heed@colliers.com

Gregg Riva
206.595.1525
gregg.riva@colliers.com

Talor Okada
425.492.5145
talor.okada@colliers.com

