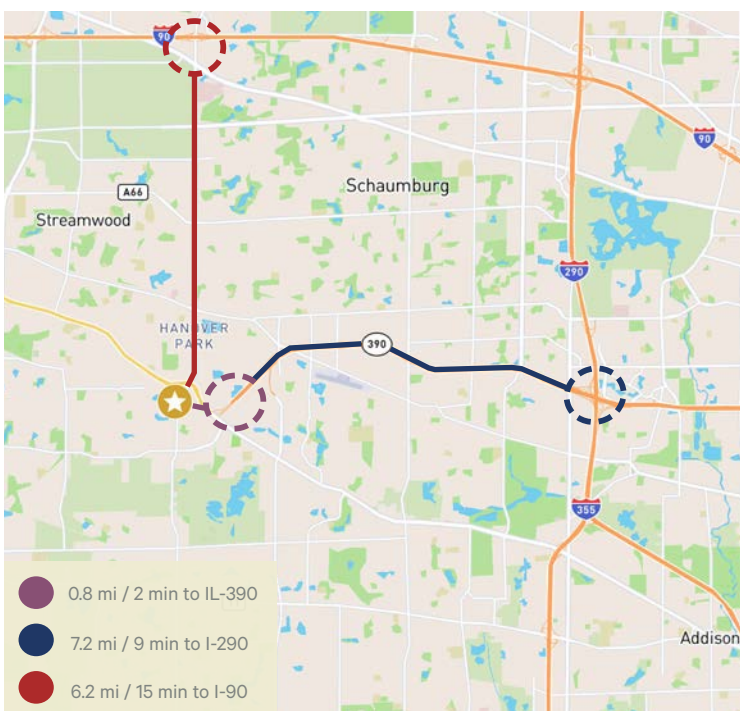


# 6250 Church Road Hanover Park, IL

30,043 SF Available in DuPage County



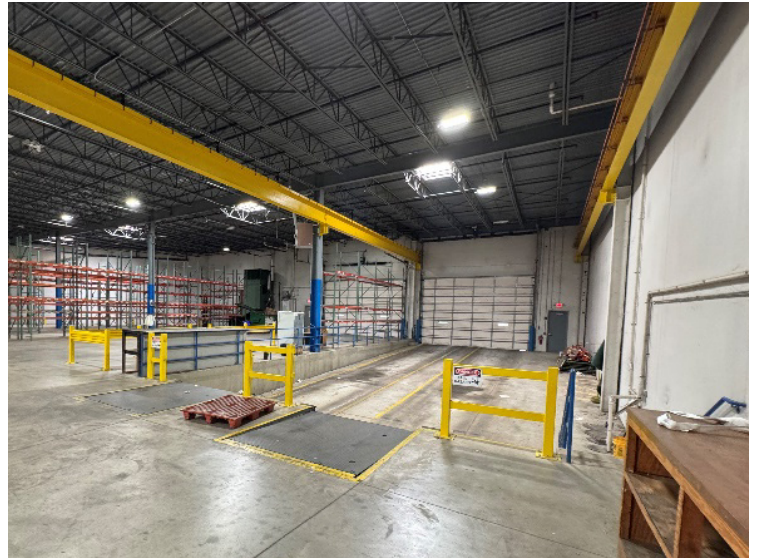
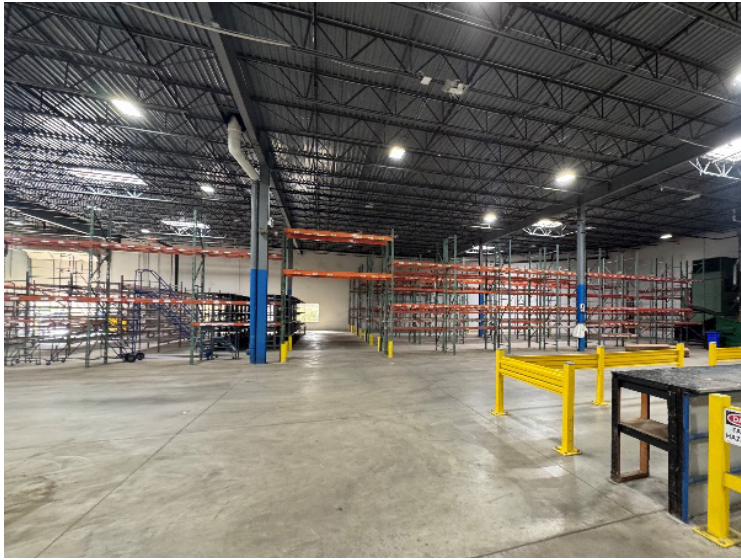
## Property Specifications

Total Building Size:	30,043 SF
Available Size:	30,043 SF
Office Size:	TBD
Ceiling Height:	22' clear
Loading:	2 Interior docks 2 Drive-in doors
Car Parking:	±25 spaces
Sublease Term Through:	September 14, 2027
Date Available:	Immediately
Asking Sublease Rate:	\$12.00 Gross (PSF)



## Highlights

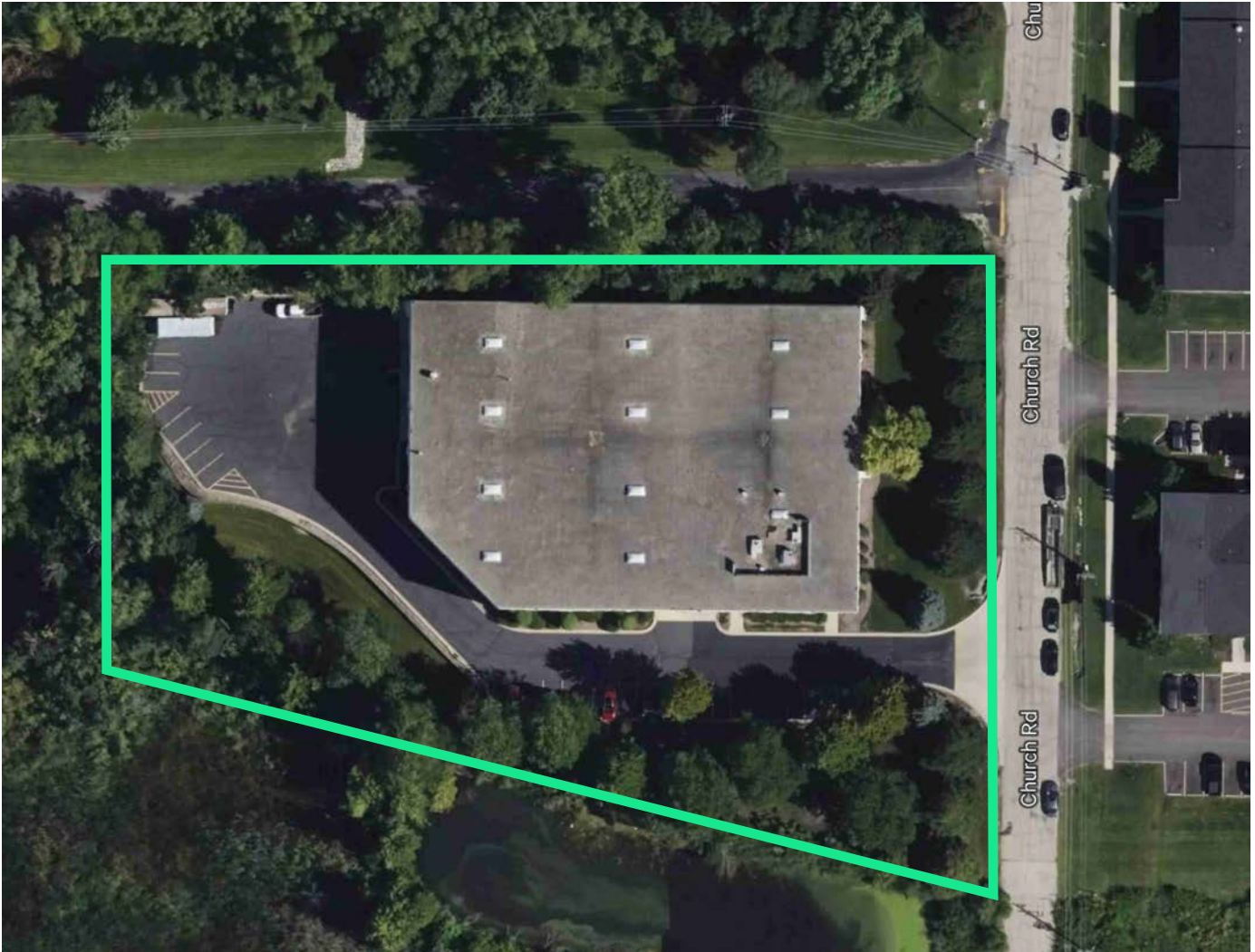
- + Free-standing, single-tenant building
- + Outside storage potential
- + 2-ton crane over interior dock bays
- + Quick access to IL-Route 390 and IL- Route 59





6250 Church Road  
Hanover Park, IL

For Sublease



## Contact Us

**Kevin Segerson**

*Executive Vice President*  
+1 847 890 0614  
kevin.segerson@cbre.com

**Genna Ohrn**

*Transaction Manager*  
+1 708 415 5350  
genna.ohrn@cbre.com

**Clayton Thorson**

*Associate*  
+1 630 344 2560  
clayton.thorson@cbre.com

© 2024 CBRE, Inc. All rights reserved. This information has been obtained from sources believed reliable, but has not been verified for accuracy or completeness. You should conduct a careful, independent investigation of the property and verify all information. Any reliance on this information is solely at your own risk. CBRE and the CBRE logo are service marks of CBRE, Inc. All other marks displayed on this document are the property of their respective owners, and the use of such logos does not imply any affiliation with or endorsement of CBRE. Photos herein are the property of their respective owners. Use of these images without the express written consent of the owner is prohibited.

