



**HOKANSON
COMPANIES INC.**
INVESTMENT & CORPORATE REAL ESTATE

FOR LEASE

MIAMI MEDICAL PLAZA 315 W. OLD KEY DRIVE, PERU, IN 46970



AVAILABLE SPACE

- Suite 130: 1,670 RSF
- Suite 160: 1,000 - 4,000 RSF

SPACE HIGHLIGHTS

- Join high quality tenants including:
 - Optum - Primary Care
 - Ascension St. Vincent Health & Hospital
 - Fort Wayne Medical Oncology and Hematology
- Property is locally owned and professionally managed
- Strategically located on US 24 in Peru, Indiana near Wabash County Hospital



CURRENT TENANTS INCLUDE



FOR MORE INFORMATION

Stephen J. Adams
Executive Vice President
(317) 633-8063
sja@hokansoninc.com

William Simon
Associate Broker
(812) 457-2320
william.simon@hokansoninc.com



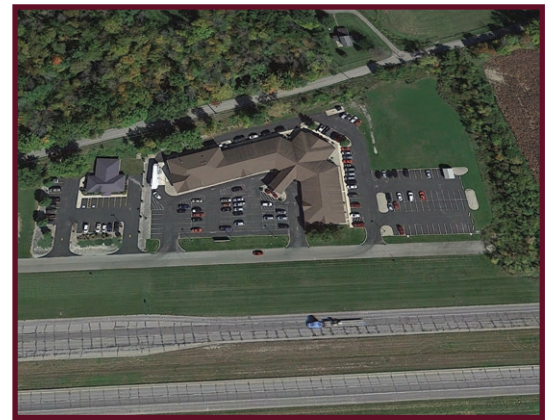
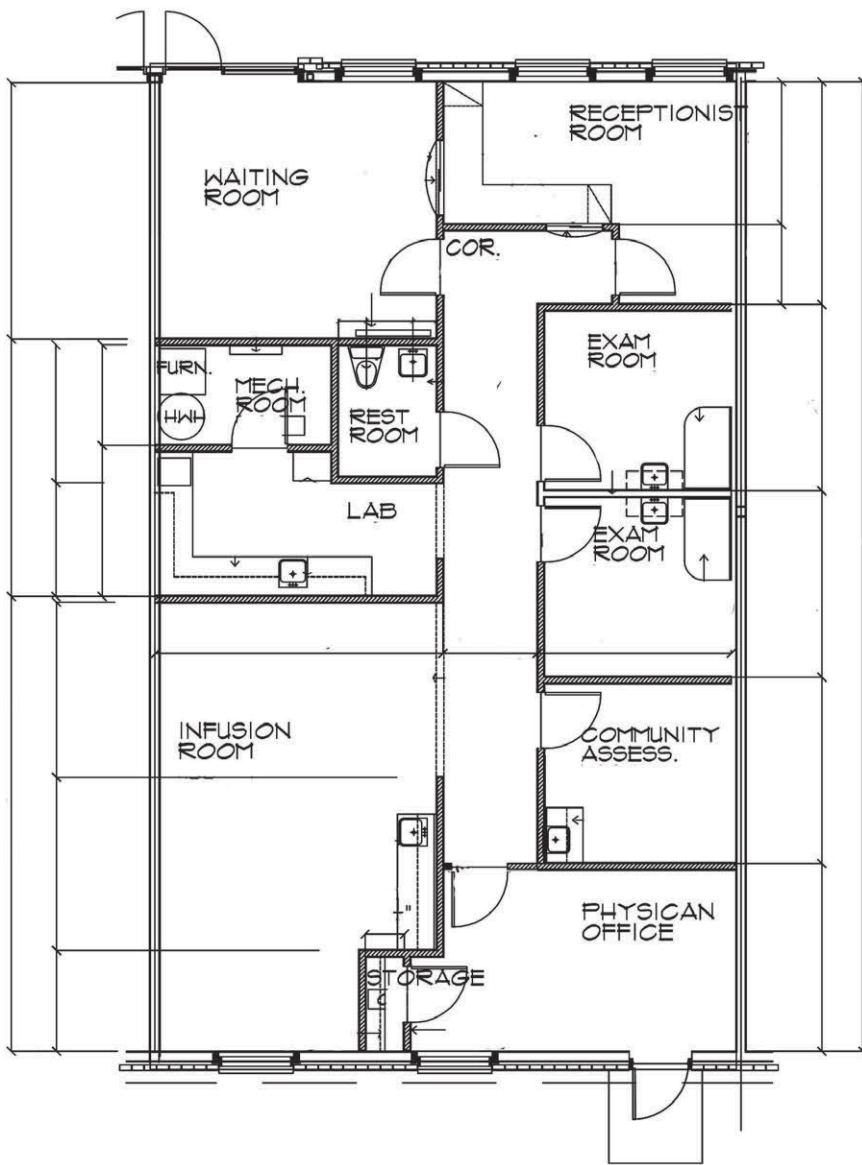
**HOKANSON
COMPANIES INC.**

Hokanson Companies, Inc.
10201 N. Illinois Street, Suite 350
Carmel, Indiana 46290
www.hokansoninc.com

The information obtained herein was obtained from sources we consider reliable. We cannot be responsible, however, for error, omission, prior sale, withdrawal from the market, or change in price. Broker makes no representation to the environmental condition of the property and recommends purchaser's independent investigation.

Suite 130

1,670 SF
(Available
March 2026)





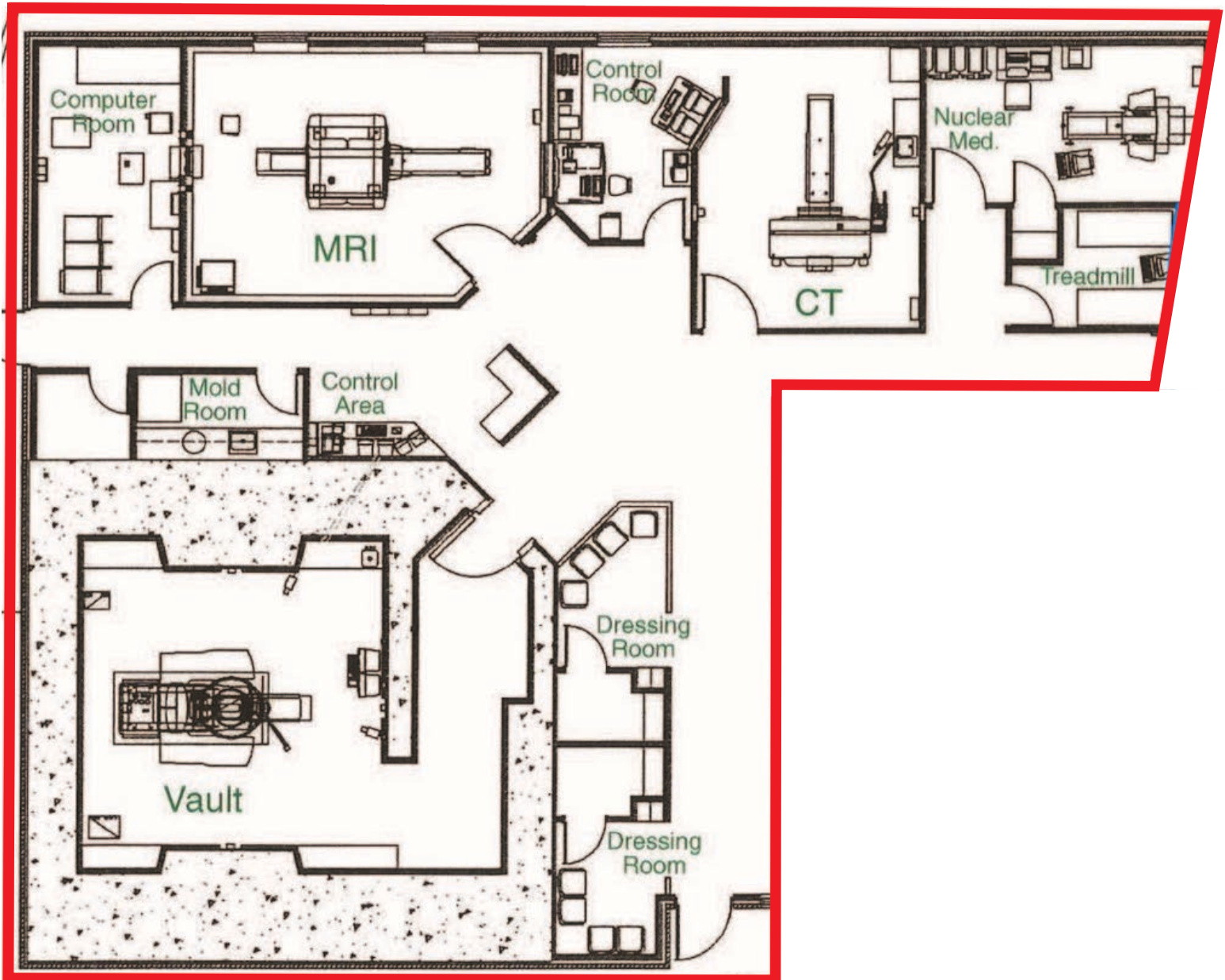
**HOKANSON
COMPANIES INC.**
INVESTMENT & CORPORATE REAL ESTATE

FOR LEASE

MIAMI MEDICAL PLAZA
315 W. OLD KEY DRIVE, PERU, IN 46970

Suite 160

1,000 - 4,000 SF



FOR MORE INFORMATION

Stephen J. Adams
Executive Vice President
(317) 633-8063
sja@hokansoninc.com

William Simon
Associate Broker
(812) 457-2320
william.simon@hokansoninc.com



**HOKANSON
COMPANIES INC.**

Hokanson Companies, Inc.
10201 N. Illinois Street, Suite 350
Carmel, Indiana 46290
www.hokansoninc.com

The information obtained herein was obtained from sources we consider reliable. We cannot be responsible, however, for error, omission, prior sale, withdrawal from the market, or change in price. Broker makes no representation to the environmental condition of the property and recommends purchaser's independent investigation.