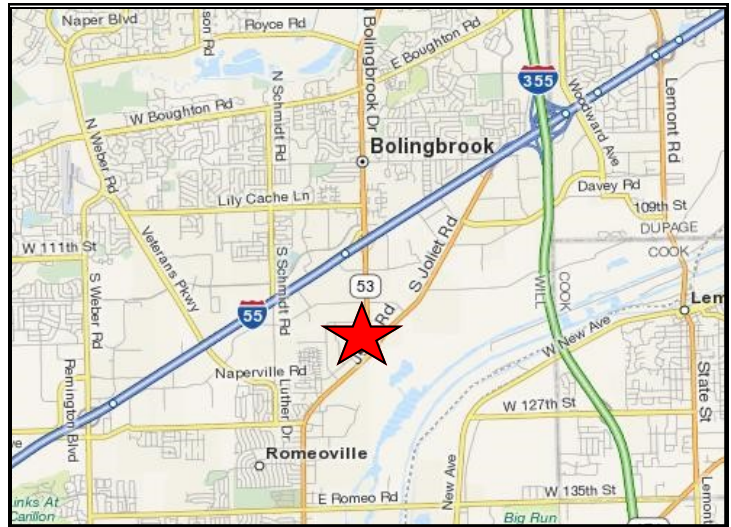


FOR LEASE

9,000 S.F. Industrial Space

1277 Naperville Dr., Unit D - Romeoville, IL

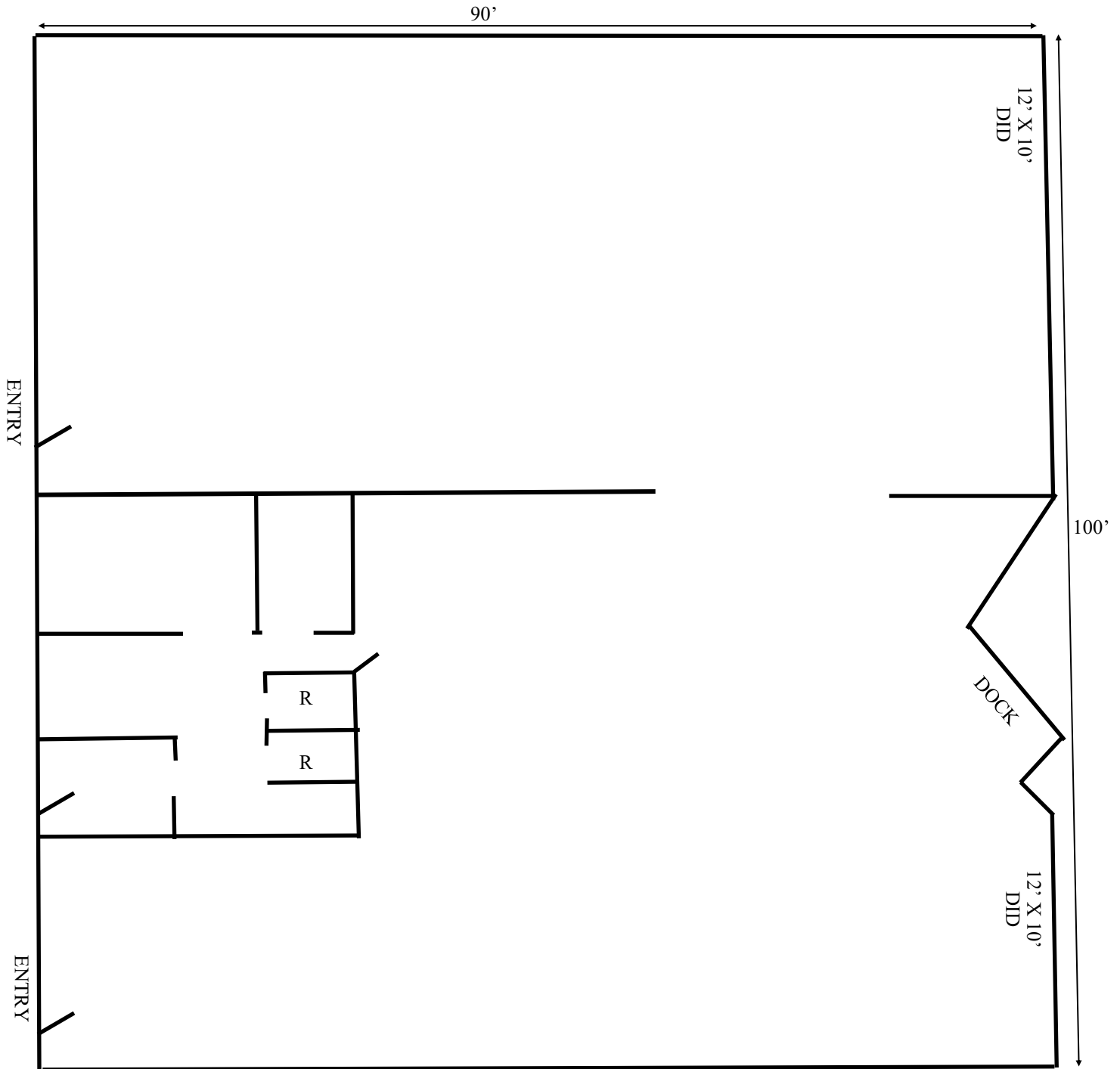
- 612 s.f. office space w/ central HVAC
- 16' ceiling height
- Fully sprinklered
- 200 AMP, three-phase electric
- Loading: Two 12' x 10' drive-in doors
One exterior dock w/leveler
- Warehouse skylights
- 1990 masonry construction
- Part of a larger 27,000 s.f. multi-tenant building
- Separately metered utilities
- Minutes to I-55 @ Route 53
- Ample parking
- Lease rate: \$9.25 psf gross



Exclusively Offered by:
Daniel Chopp
(708) 387-2640
dan@choppcommercial.com

All information herein is from sources deemed reliable but not guaranteed accurate.
Subject to errors, omissions, and to change of price and terms, prior sale or lease, all without notice.

1277 Naperville Dr., Unit D - Romeoville, IL



NOTE: THIS DRAWING NOT TO SCALE.

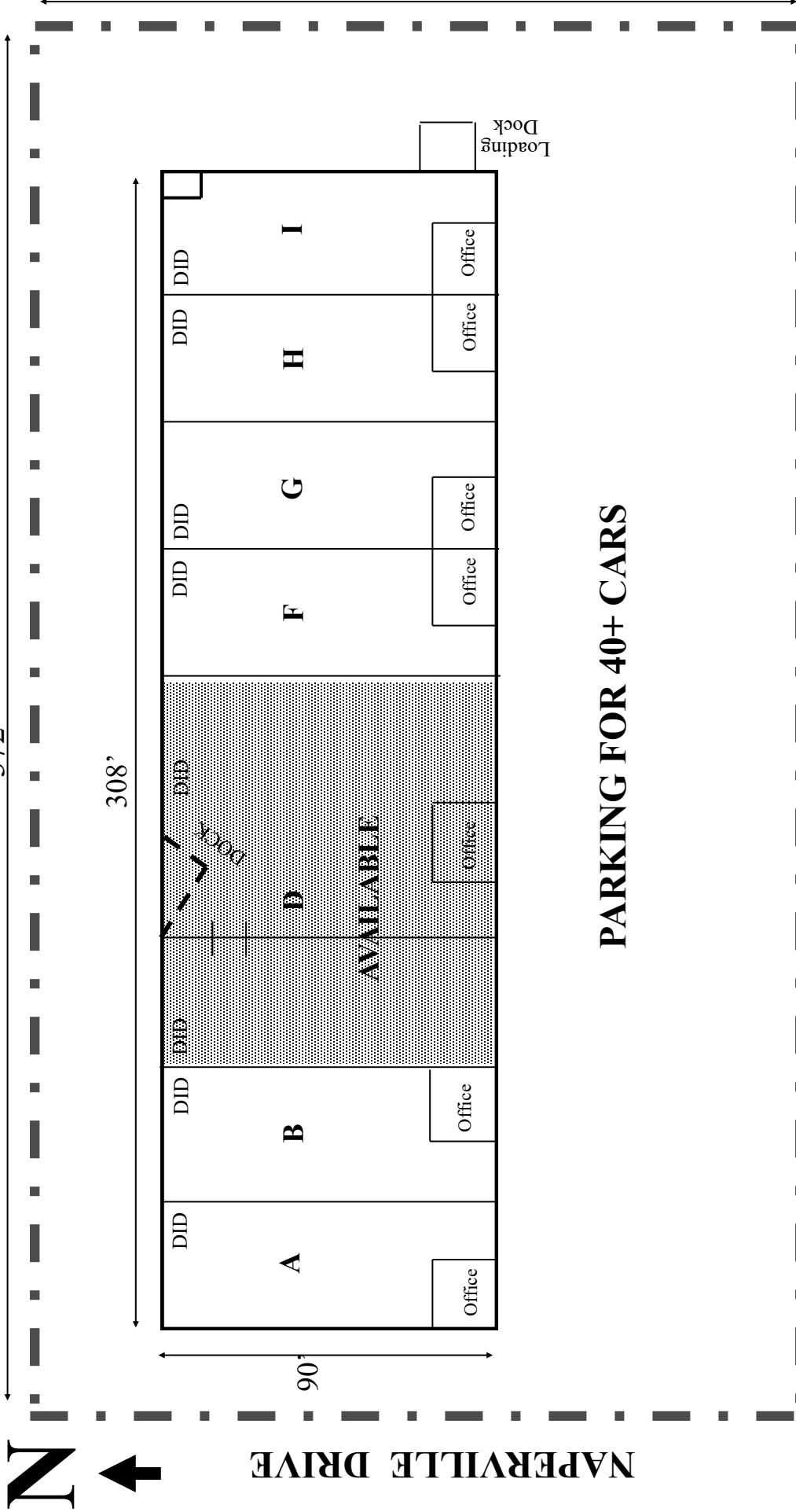


Exclusively Offered by:
Daniel Chopp
(708) 387-2640
dan@choppcommercial.com

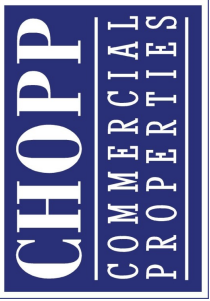
All information herein is from sources deemed reliable but not guaranteed accurate.
Subject to errors, omissions, and to change of price and terms, prior sale or lease, all without notice.

**Marquette Industrial Center
1277 Naperville Drive, Romeoville, IL**

372'



PARKING FOR 40+ CARS



Exclusively Offered by:
Daniel Chopp
(708) 387-2640
dan@choppcommercial.com

NOTE: THIS DRAWING NOT TO SCALE.

All information herein is from sources deemed reliable but not guaranteed accurate. Subject to errors, omissions, and to change of price and terms, prior sale or lease, all without notice.