



Macro Aerial

5154 E Skelly Dr. | Tulsa, OK 74165

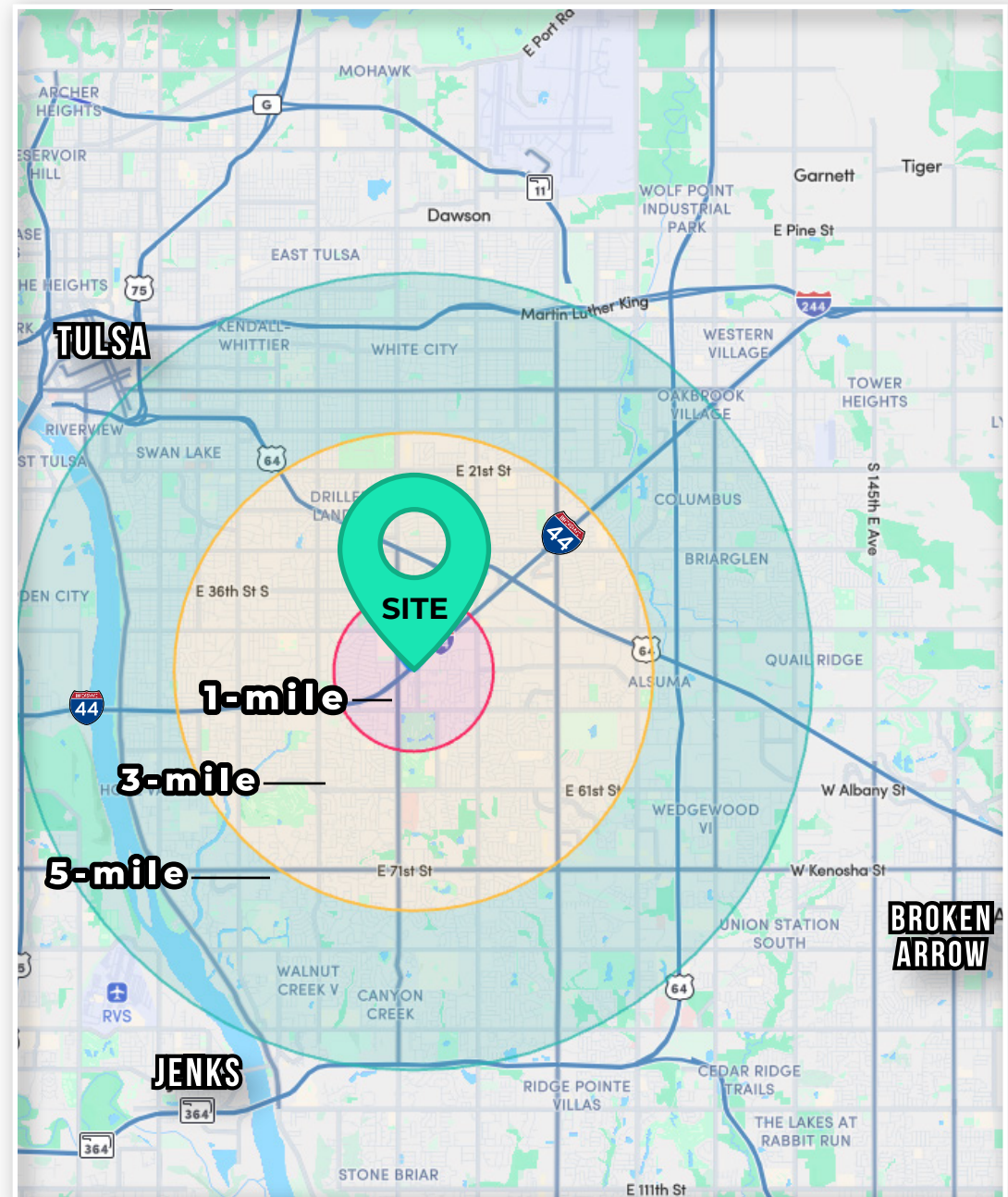
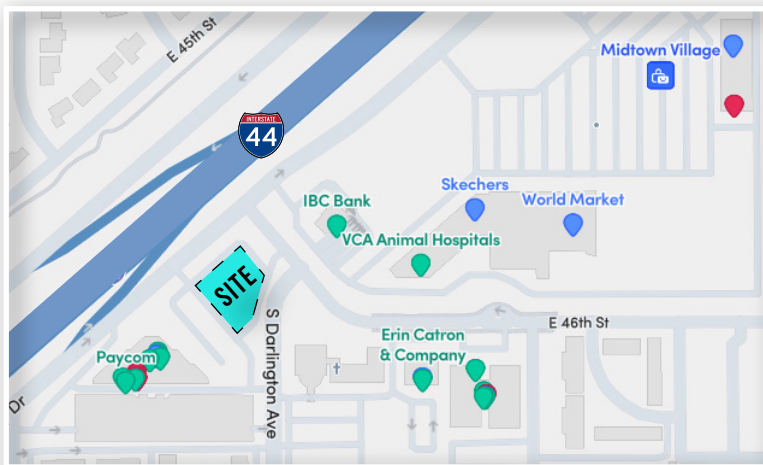


Summary

- Lease Rate: Call for Pricing
- Building Size: 20,000 SF
- Available For Lease:
 - 1st Floor: 1,000-10,000 SF
 - 2nd Floor: Fully Leased
- Completion Date: Q3 2025

Property Overview

- Rare mixed-use availability in Tulsa's historic office corridor
- Ground floor retail, medical office, and traditional office use available
- Excellent visibility and frontage to I-44 (90,000+ VPD)
- Warm gray shell to include RTU set



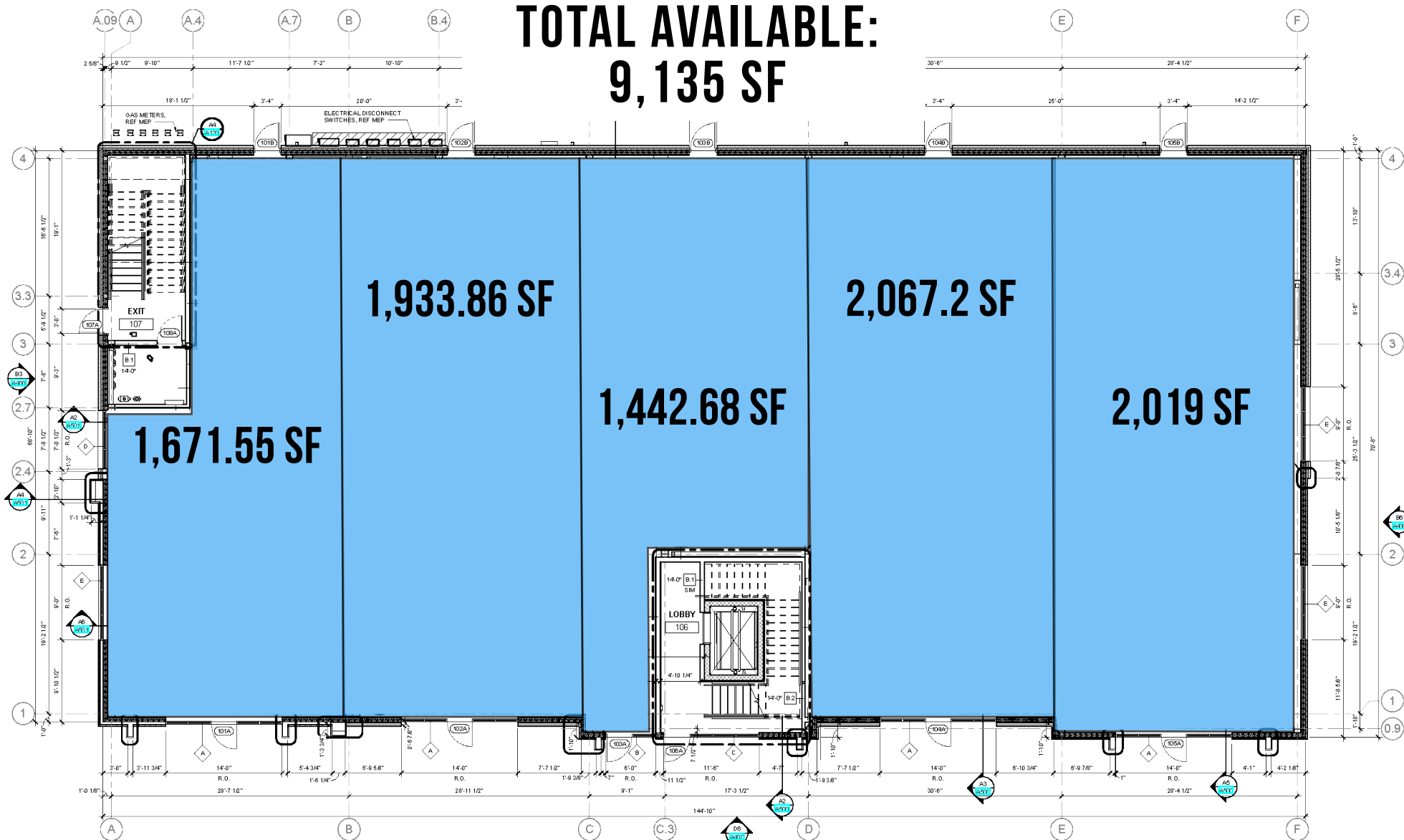
5154 E Skelly Dr. | Tulsa, OK 74165



Floor Plan - First Floor

5154 E Skelly Dr. | Tulsa, OK 74165

**TOTAL AVAILABLE:
9,135 SF**



Renderings

5154 E Skelly Dr. | Tulsa, OK 74165

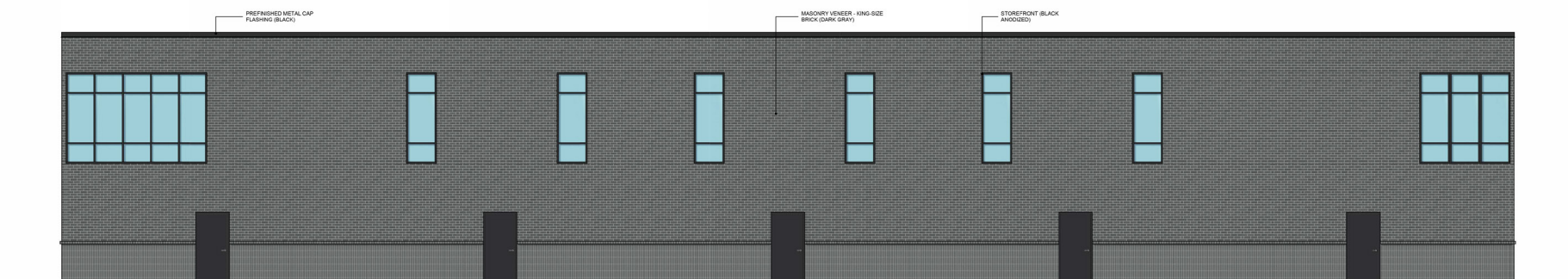


NORTH ELEVATION



EAST ELEVATION

WEST ELEVATION





Jacob Ryan
Director Retail Leasing

O: +1 (405) 300-4003
P: +1 (405) 830-4957
E: jacobryan@ashtongray.com



Jack Geurkink
Director Healthcare Leasing

O: +1 (405) 300-4003
P: +1 (405) 249-0890
E: jackgeurkink@ashtongray.com

