

— FOR LEASE —

# PHYSICIANS CENTRE

505 Louis Henna Blvd., Round Rock, TX 78728

1,719 SF Available

BREAST & BODY CENTER | SNYDER DERMATOLOGY

505

# PHYSICIANS CENTRE

505 Louis Henna Blvd., Round Rock, TX 78728

**Physicians Centre** is a Class A medical office building located in Round Rock, Texas, near the intersection of I-35 and SH 45. The Property is within close proximity to several neighborhoods and major employers, in addition to numerous shopping, entertainment, and food options. Physicians Centre's excellent location provides great visibility and ease of access from any location throughout the growing Round Rock and Austin submarkets.

## LEASE TERMS

- ▶ Asking Rate: Call Broker
- ▶ 2025 OpEx (est.): \$23.50/SF
- ▶ Parking: 5 per 1000 parking ratio
- ▶ Allowance: Call Broker

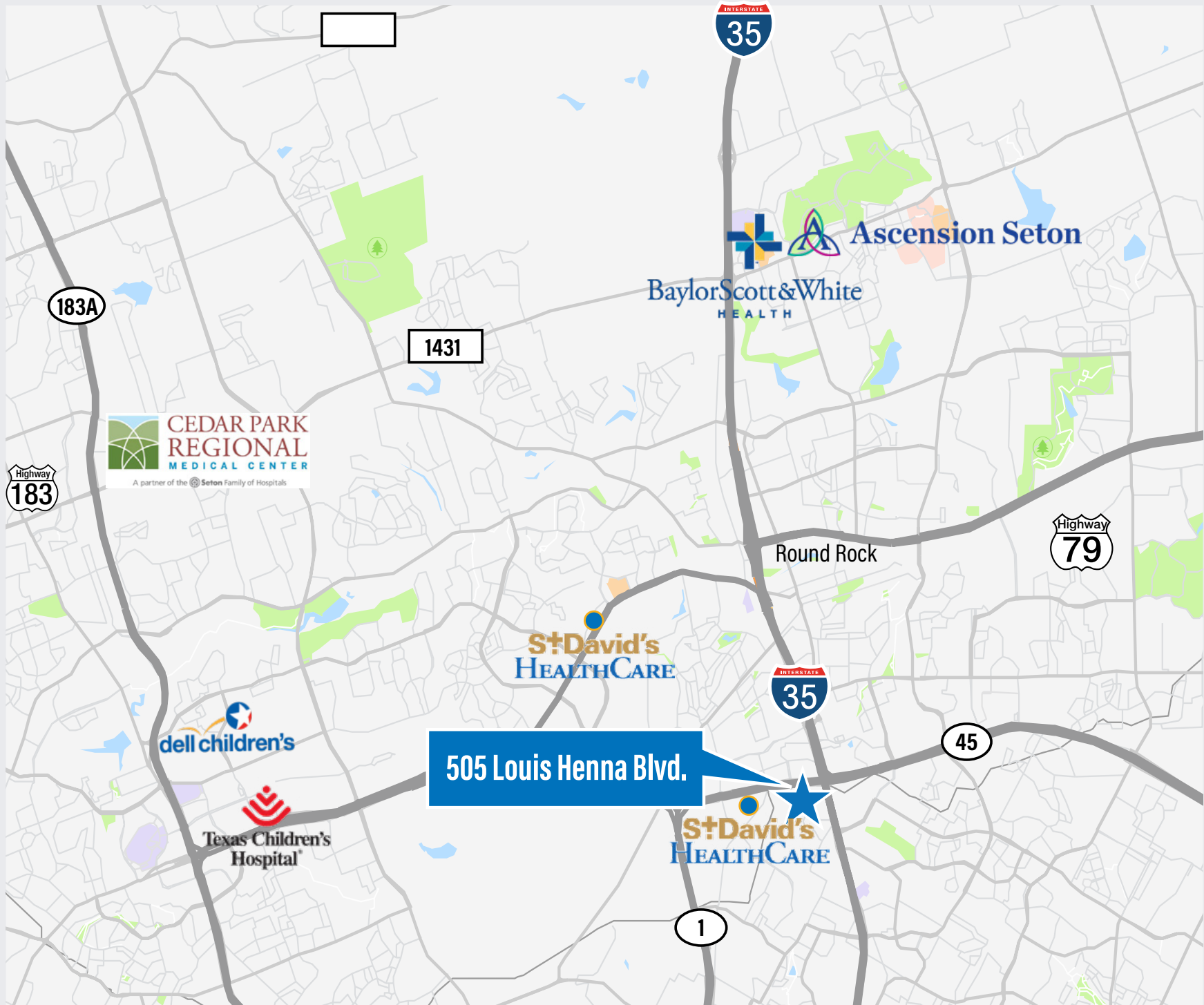
## AVAILABILITY

- ▶ Suite 230 • 1,719 SF (*Shell space condition*)
- ▶ [View the Space](#)

## BUILDING HIGHLIGHTS

- ▶ Great visibility and easy ingress/egress to project
- ▶ Excellent access to I-35 and SH Toll 45.
- ▶ Near abundant retail, restaurants and hotels
- ▶ Pylon signage available

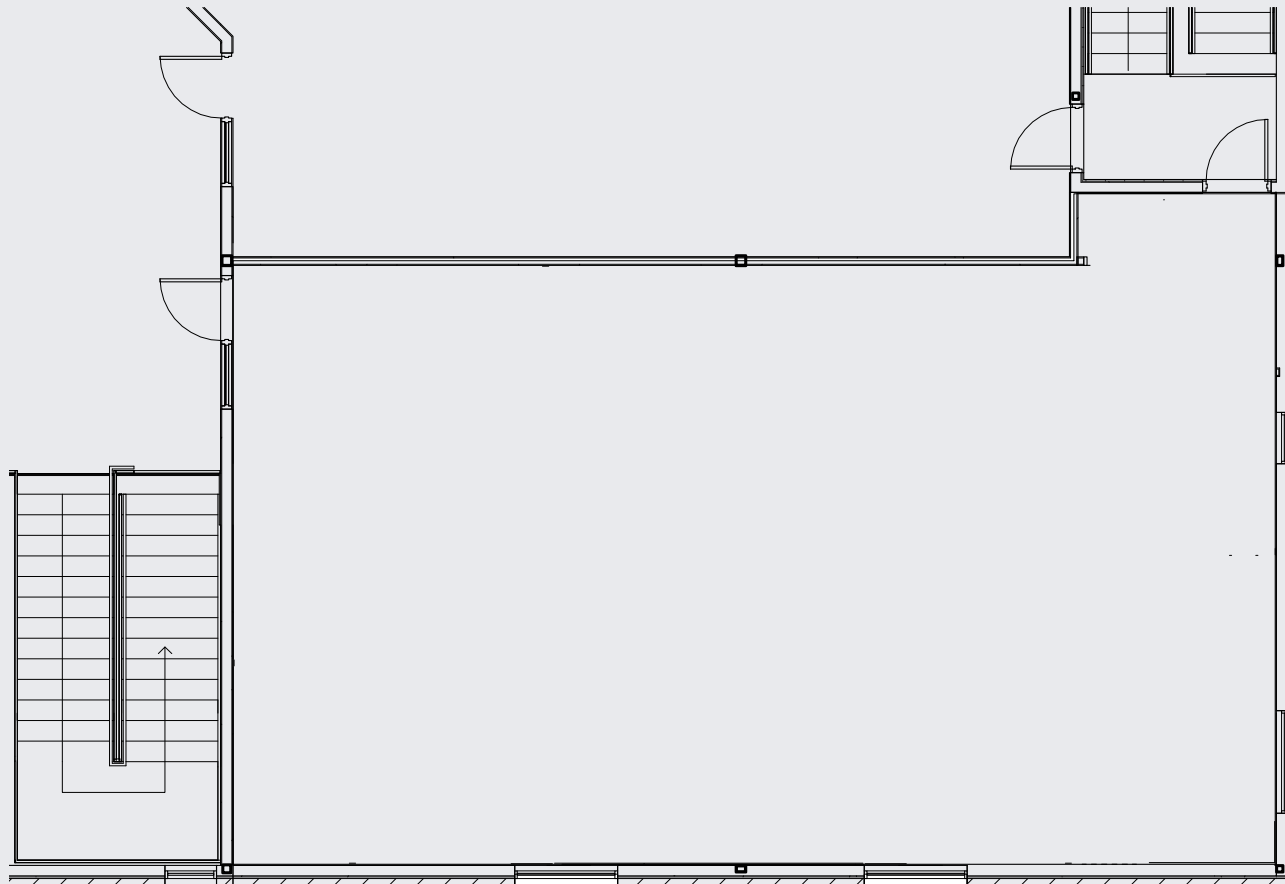
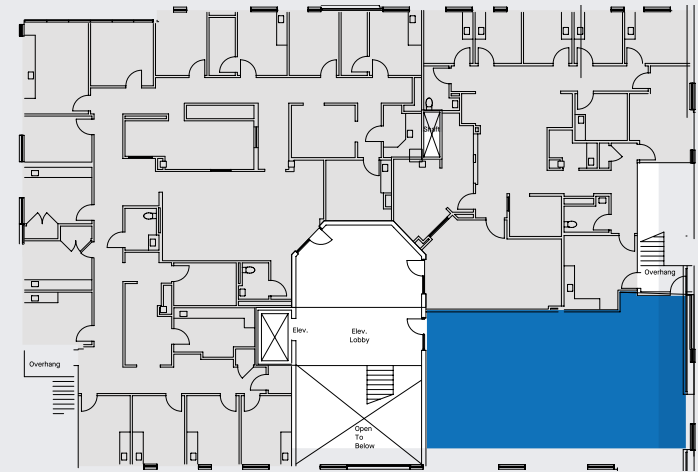




# PHYSICIANS CENTRE

505 Louis Henna Blvd.  
Round Rock, TX 78728

Suite 230 • 1,719 SF

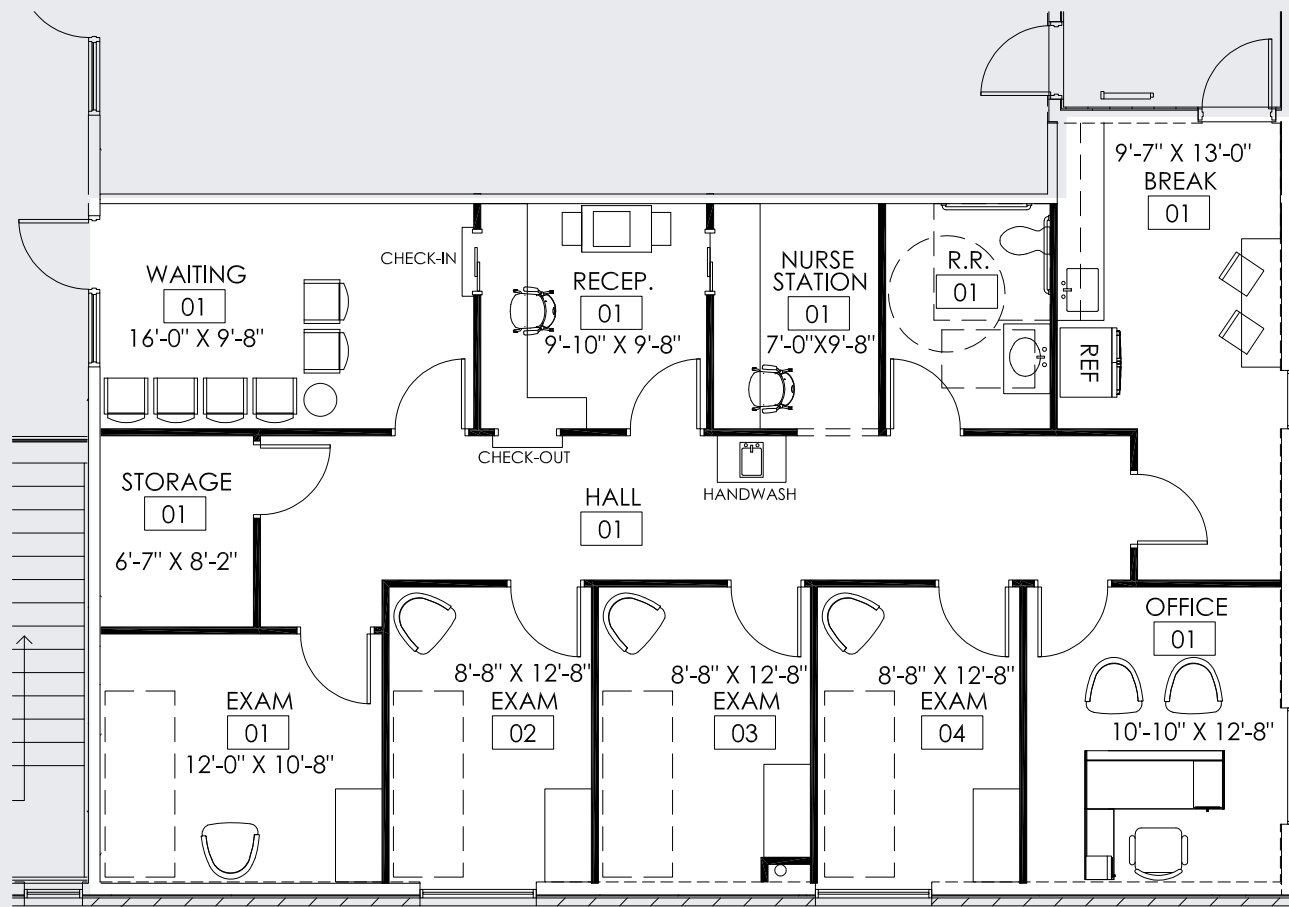


# PHYSICIANS CENTRE

505 Louis Henna Blvd.  
Round Rock, TX 78728

## Suite 230 • 1,719 SF

CONCEPT PLAN

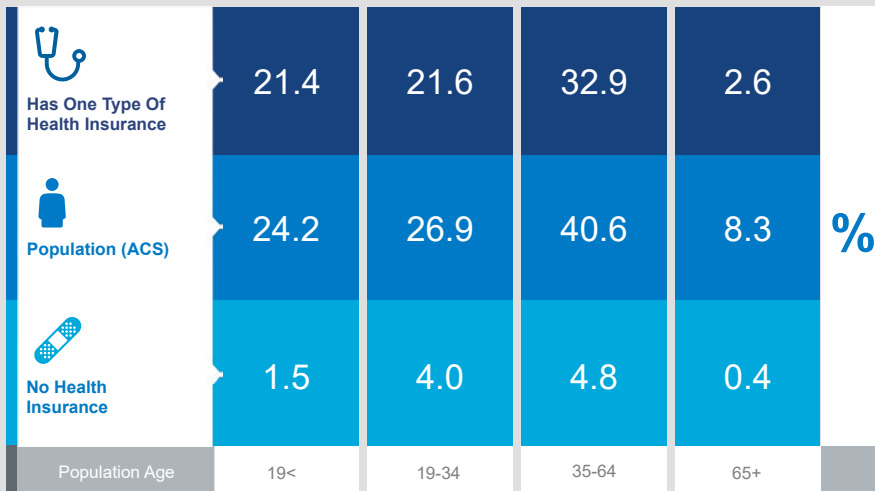


# PHYSICIANS CENTRE

505 Louis Henna Blvd.  
Round Rock, TX 78728

## Demographic Healthcare Data

Healthcare & insurance statistics for the population within a 10 minute drive time from **505 Louis Henna Blvd.**



### Population



233,280

Civilian Noninstitutionalized Population (ACS)



This infographic contains data provided by American Community Survey (ACS), Esri and Bureau of Labor Statistics, Esri and GIK MRI. The vintage of the data is 2015-2019, 2021.  
© 2022 Esri

### Exercise (Percent of Adults)



31.6%

Exercise at home 2+ times per week



18.2%

Exercise at club 2+ times per week

### Health Care Expenditure



\$4,180

Annual Health Insurance Expenditures



\$2,151

Medical Care



Medicare:  
Population 65+

4,954

Medicare Only

2,771

Direct-Purch & Medicare

3,767

Employer & Medicare

1,551

Medicare & Medicaid

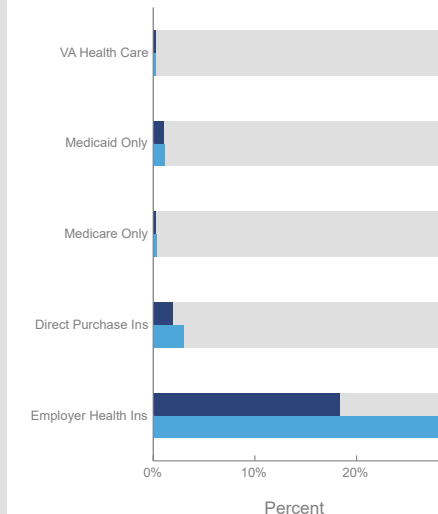
### Health Care (Consumer Spending)

Annual Expenditure

Blue Cross/Blue Shield	\$1,124.8
Medicare Payments	\$698.6
Physician Services	\$272.9
Dental Services	\$415.0
Eyecare Services	\$72.3
Lab Tests/X-rays	\$72.1
Hospital Room & Hospital Service	\$229.9
Convalescent/Nursing Home Care	\$33.5

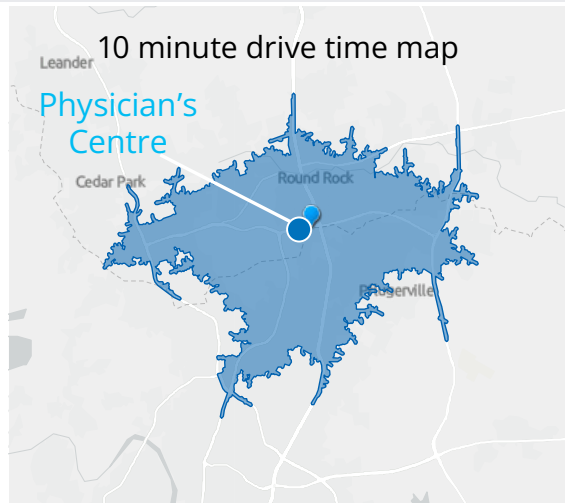
### Health Insurance Coverage (ACS)

● Pop 19-34 ● Pop 35-64



# PHYSICIANS CENTRE

505 Louis Henna Blvd.  
Round Rock, TX 78728

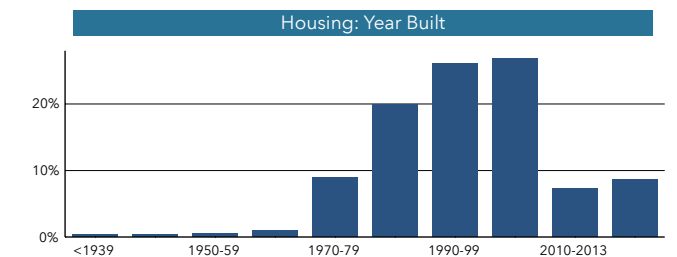
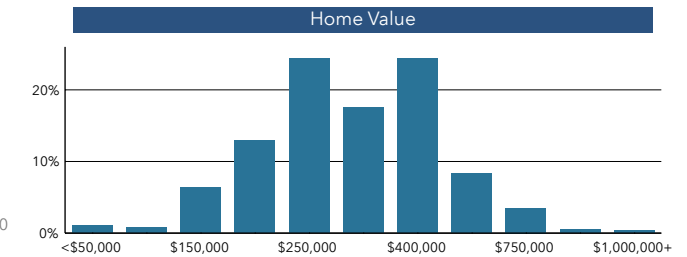
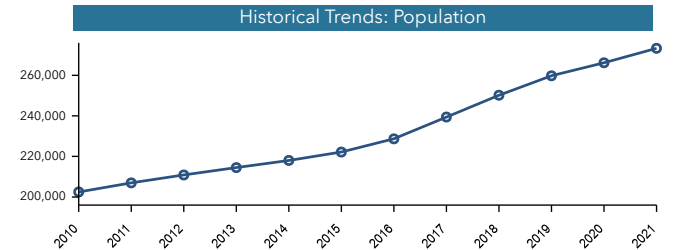
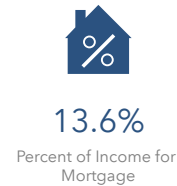
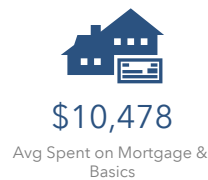


## POPULATION TRENDS AND KEY INDICATORS

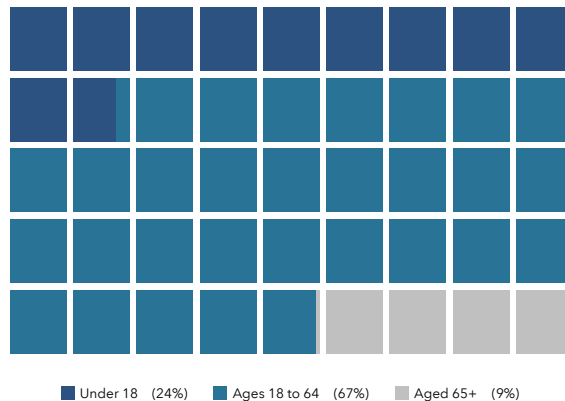
### Population within a 10 minute drive time from Physician's Centre

273,312	110,844	2.46	34.1	\$81,095	\$263,101	87	141	78
Population	Households	Avg Size Household	Median Age	Median Household Income	Median Home Value	Wealth Index	Housing Affordability	Diversity Index

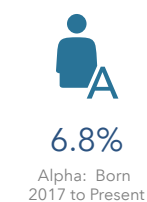
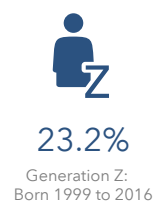
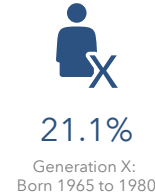
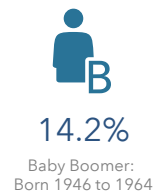
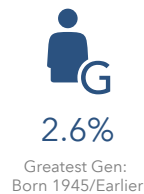
### MORTGAGE INDICATORS



### POPULATION BY AGE



### POPULATION BY GENERATION



Source: ACS, Esri,  
2019, 2021, 2026.