

# WINDSOR CROSSING PREMIUM OUTLET MALL

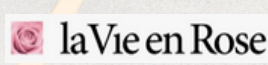
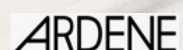
1555 TALBOT ROAD, WINDSOR, ON



**VARIOUS RETAIL SPACES FOR LEASE  
UP TO 19,350 SF AVAILABLE**



**JOIN US**



[WWW.PIVOTALCOMMERCIALREALTY.COM](http://WWW.PIVOTALCOMMERCIALREALTY.COM)



# PROPERTY HIGHLIGHTS

Welcome to **Windsor Crossing Premium Outlet Mall**, a spectacular open-air retail plaza located in a high traffic area in Windsor, Ontario.

This premium outlet mall is located in the commercial corridor of Windsor, ON and is stacked with premium national retailers that include: Tommy Hilfiger, Guess, Roots, Banana Republic, La Vie En Rose, Levi's, Puma, Dollarama, Columbia, Gap, Reitmans and many more.

Also, we have some excellent QSR's, which include: Domino's, Subway (Opening Soon), Church's Chicken (Opening Soon).

- Easy access to Highway 401
- Minutes away from St. Clair College Campus
- Minutes away from St. Académie Ste-Cécile International High School

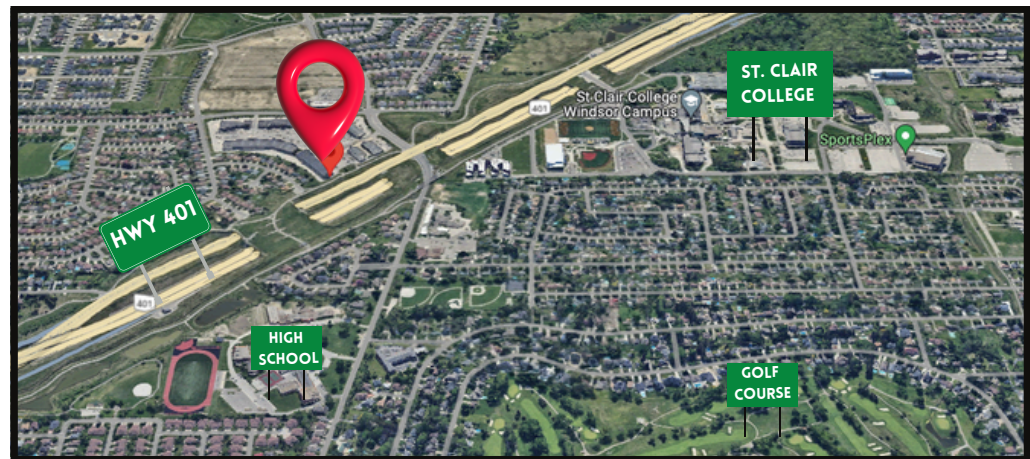
We have various retail spaces **For Lease** that are positioned well for your business to succeed.

## Available Retail Units:

- Unit 120: 2,702 SF (adjacent to Roots)
- Unit 502a: 1,502 SF (adjacent to Columbia)
- Unit 503: 2,897 SF (adjacent to Children's Place)
- Unit 640: 2,850 SF (adjacent to Aldo)
- Unit 650/660 SF: 16,500 SF, can be demised, (adjacent to Dollarama)

**Net Rent:** Call Agent/ Broker

**TMI:** \$9.50 PSF (2024)



# SITE PLAN

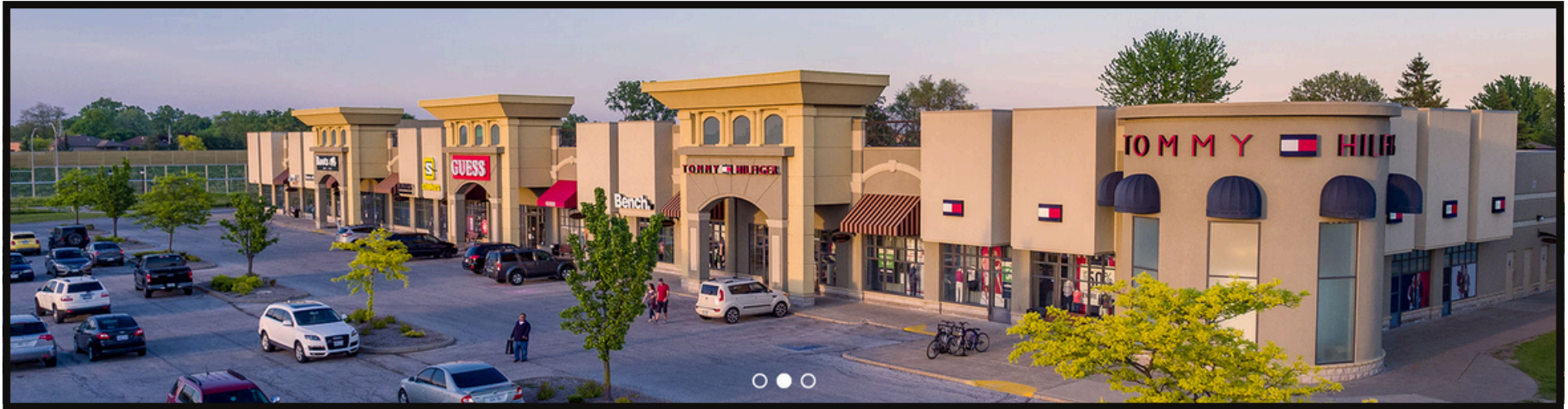


JOIN US

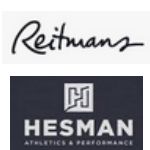




# GALLERY



Join Us



TOMMY HILFGER



ARDENE



ALDO



THE CHILDREN'S PLACE





# CONTACT INFORMATION

## WINDSOR CROSSING PREMIUM OUTLET MALL



**VARIOUS RETAIL SPACES FOR LEASE**

### CONTACT INFO:

**Shawn Abramovitz, BA**

Broker of Record & CEO

416.900.3878 Ext: 102

[shawn@pivotalcommercialrealty.com](mailto:shawn@pivotalcommercialrealty.com)



**JOIN US**

[WWW.PIVOTALCOMMERCIALREALTY.COM](http://WWW.PIVOTALCOMMERCIALREALTY.COM)