

6828-52 Silverheel

Shawnee, Kansas

Property Features

- 3,000 SF dental office with cabinetry - \$24/SF NNN
- 3,544 SF open office with private restrooms - \$16/SF NNN
- Located within a growing area of Shawnee, at the SEC of K-7 and Shawnee Mission Pkwy
- Abundant Parking at 5/1,000 SF
- Building signage with autonomous building entrances for each suite

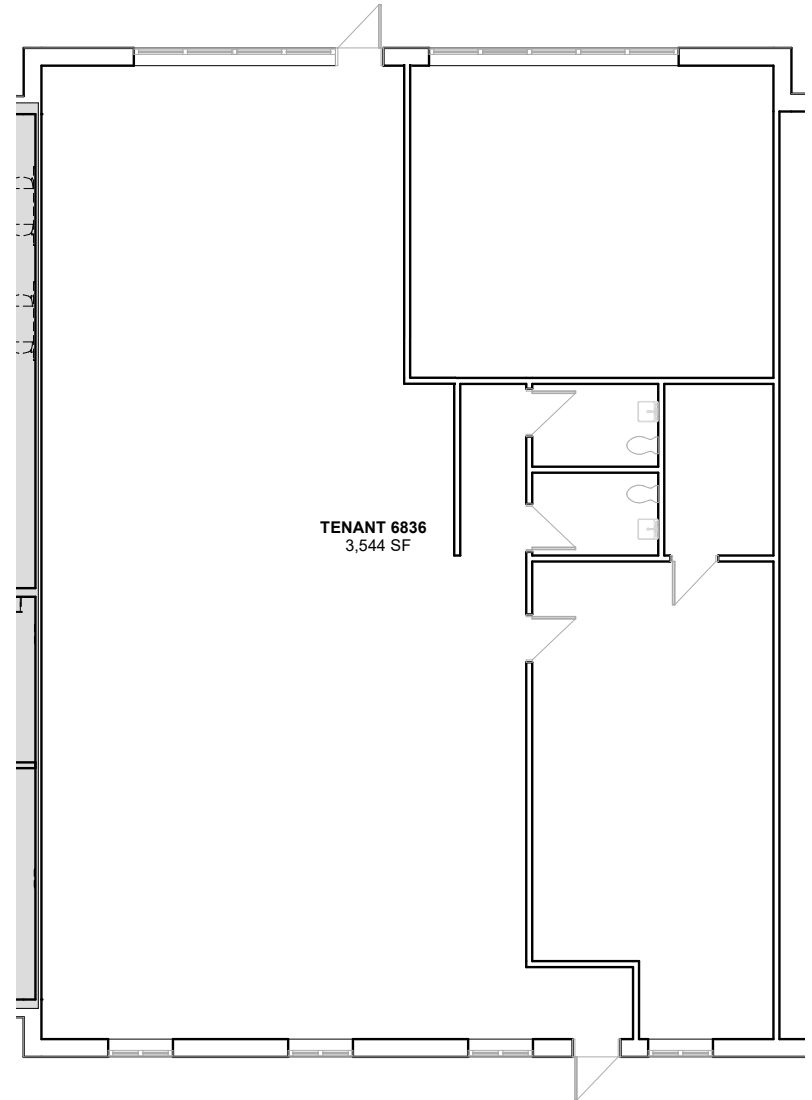
For more information:

Brandon LaSala

+1 913 956 5815 • brandon@nai-heartland.com

Open Office Suite

- 3,544 SF open office with private restrooms
- Private outdoor patio area
- High-end finishes
- Lease Rate: \$16/SF NNN



For more information:

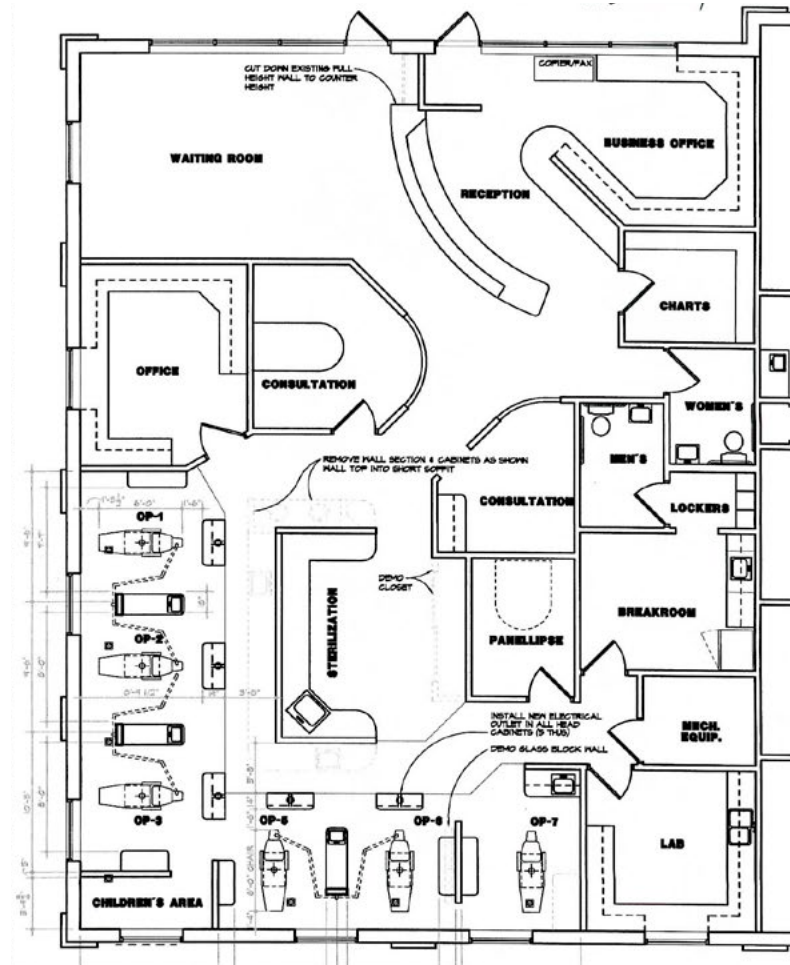
Brandon LaSala

+1 913 956 5815 • brandon@nai-heartland.com



Corner Dental Office Visible to K-7

- 3,000 SF Dental office with ideal configuration in place
- Higher end medical buildout with dental cabinetry in place
- 2 private restrooms, consult room, built in reception desk/work areas in place
- Building signage available
- \$24/SF NNN



For more information:
Brandon LaSala

+1 913 956 5815 • brandon@nai-heartland.com



- STORTROPOLIS SELF STORAGE
- DON HUMMER TRUCKING
- JEM INTERNATIONAL
- INSCO INDUSTRIES
- GREEN LAWN, INC
- P. B. HOIDALE CO., INC
- FRESH KC WATER
- ALLEN LITTLE TEDX
- STRIKE ZONE
- MAX ENGINEERING

- JENKINS DENTISTRY FOR KIDS
- CANTERBURY ACADEMY
- PRIMROSE SCHOOL OF SHAWNEE
- THE OTHER PLACE SHAWNEE
- GOODCENTS
- SUTERA'S ITALIAN RESTAURANT

	DEMOGRAPHICS		
	1 MILE	3 MILES	5 MILES
Est. Population:	5,159	30,132	66,299
Median HH Income:	\$103,022	\$129,640	\$110,446
Daytime Population:	3,479	25,452	60,256

For more information:

Brandon LaSala

+1 913 956 5815 • brandon@nai-heartland.com