



35

SPROUL ROAD

MALVERN, PA

9,000 SF
OFFICE BUILDING
FOR SALE OR LEASE



(484) 887-8202

www.PillarRealEstateAdvisors.com

PROPERTY HIGHLIGHTS

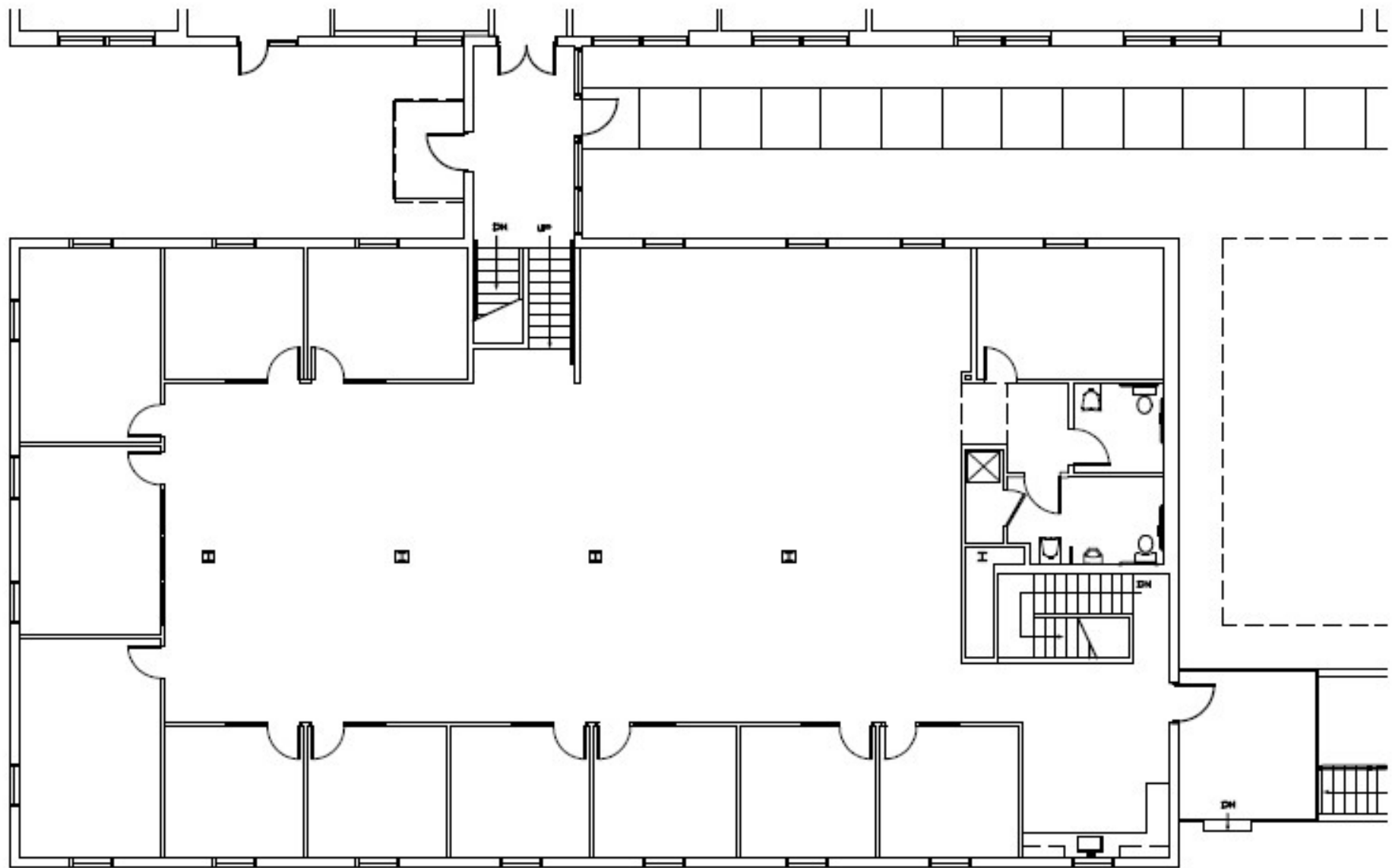
- +/- 4,600 SF to 9,200 SF
- Stand Alone Office Building
- Mix of Private Offices and Bullpen Area
- Flexible Zoning allows for many uses including: Veterinarian, Florist, R&D, Radio, etc.
- Abundant Natural Light
- 4 per 1,000 SF Ratio Common Parking Lot
- Signage and Visibility on Sproul Road
- Recently Renovated Entrance Way
- Convenient access to Route 30, Route 202, and PA Turnpike I-76

SALE PRICE: \$1,150,000

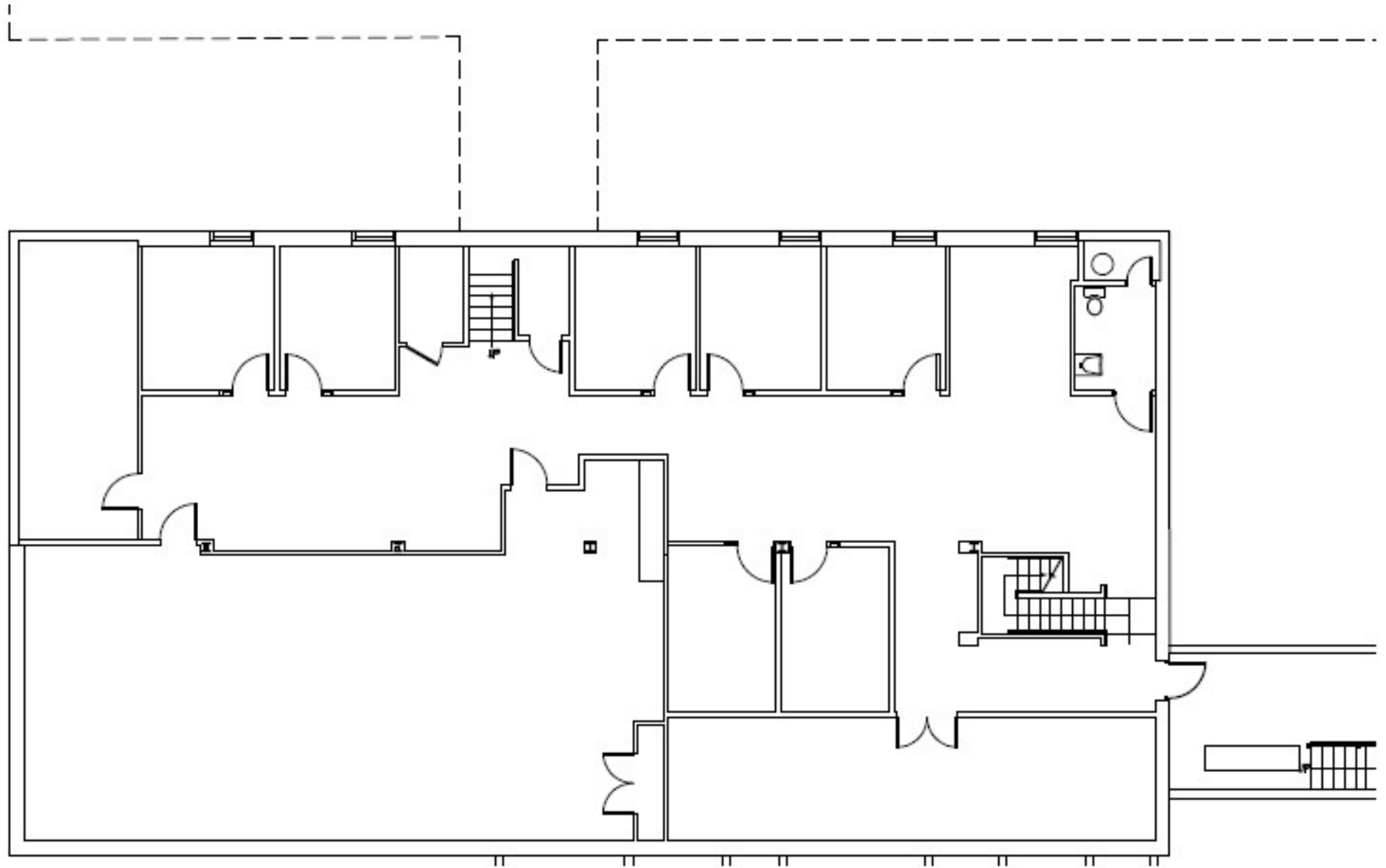
**LEASE PRICE: \$15/SF
PLUS ELECTRIC AND JANITORIAL**



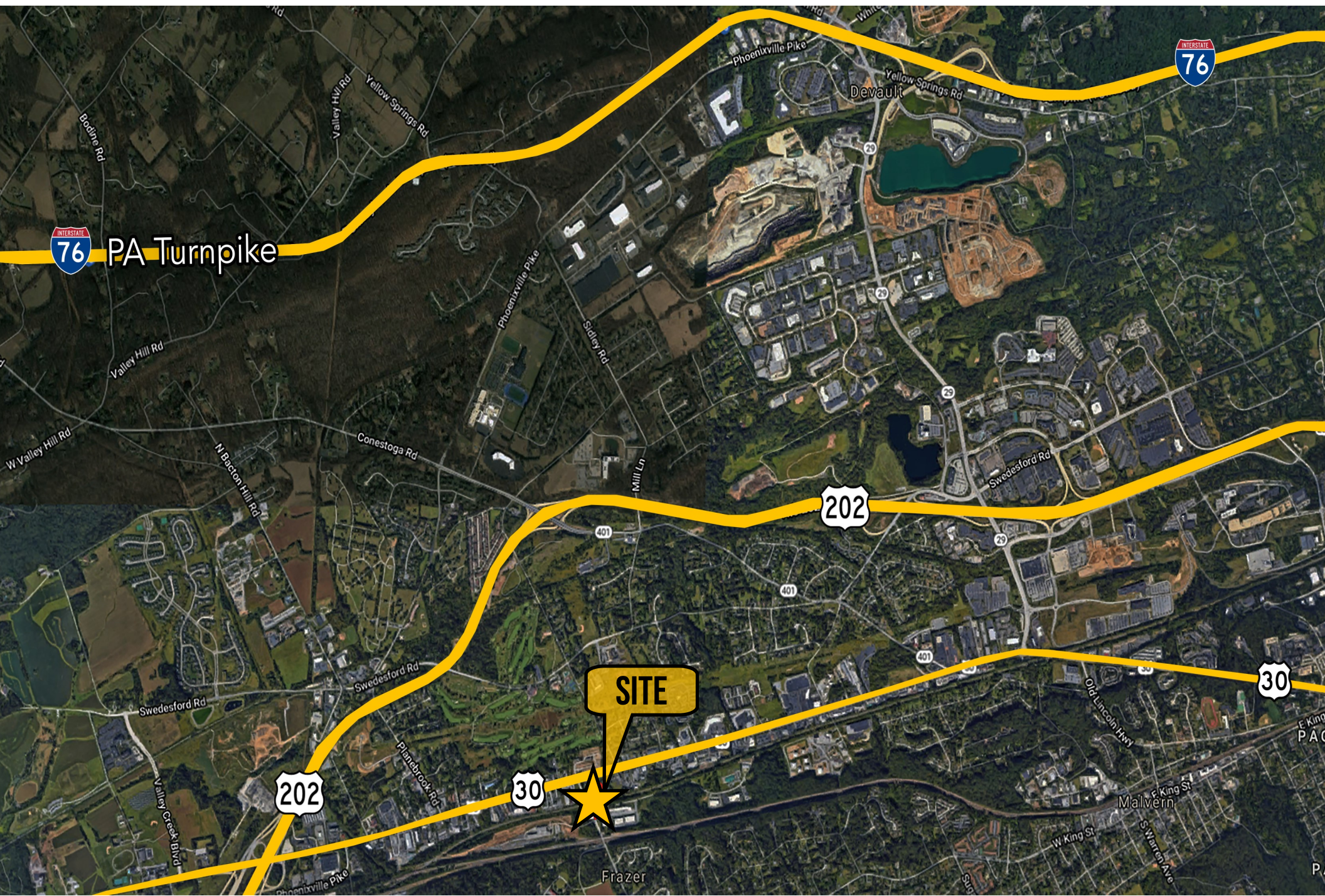
FIRST FLOOR LAYOUT



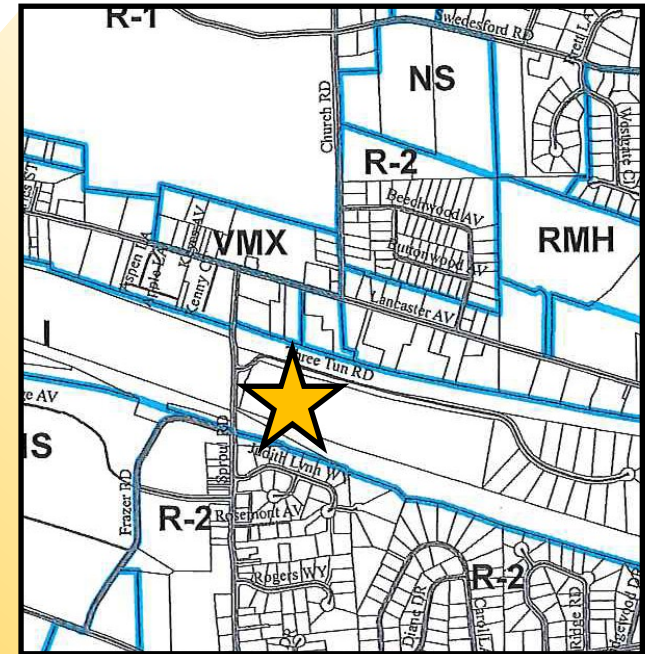
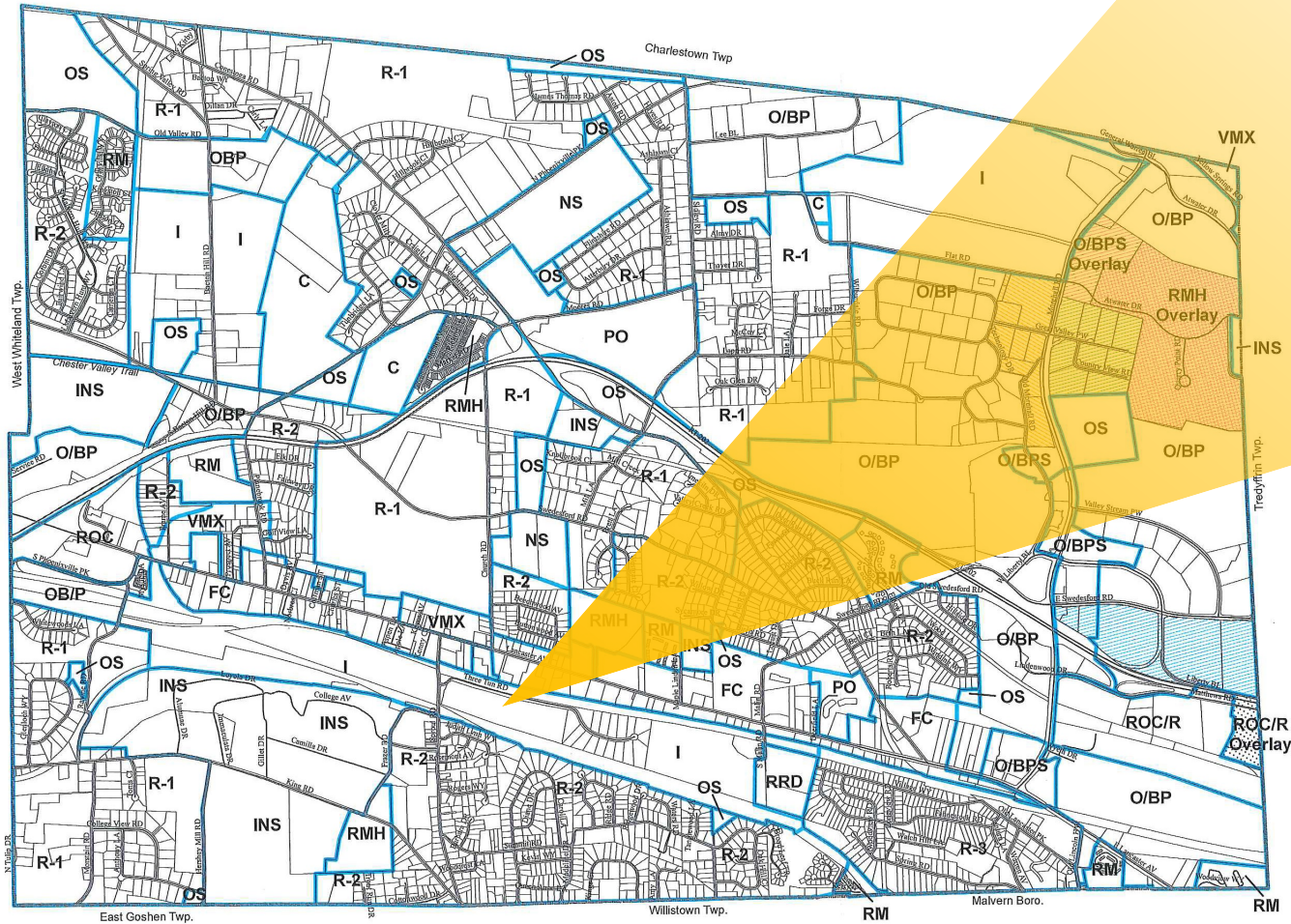
SECOND FLOOR LAYOUT



NEARBY ROADWAYS



ZONING MAP



East Whiteland Township
Zoning Map
I - Industrial

**All zoning information should be independently verified with governing municipality

ZONING INFO

Table of Permitted Uses for Industrial Districts
Township of East Whiteland
[Amended 1-13-2010 by Ord. No. 2010]

Use Classifications	Districts I
Manufacturing of products from aluminum, brass, bronze, copper, iron, steel, tin, zinc or other metals; and from bone, glass, leather, paper, plastic, rubber, shell, wire or wood; or similar in kind uses; or casting of such products	P
Fabrication of carpeting, clothing and clothing accessories, electric and electronic products, flooring, instruments, medical and testing equipment and similar in kind uses	P
Processing of food and beverages, medicine and personal care products (excluding soap), and similar in kind uses	P
Printing of paper, plastic and metal	P
Research, development and testing of new products, laboratories	P
Warehousing and distributing, including storage for personal household use	P
Cinema, radio and television stations or studios	P
Transit stations	P
Public utility facilities	P
Commercial greenhouse, nursery and wholesale florist	P
Sales of burial monuments and burial vaults	P
Accessory office uses	P
Public garage, motor-vehicle sales, service or repair shop, and gasoline service station	SE
Auto body shop	SE
Junkyard	SE
Dry cleaning and dyeing facilities	SE
Animal hospital, veterinarian, or kennel	SE
Sales, repair and service of business, office and household and garden machines, equipment and devices	SE
Wireless communication facilities	SE
Nonaccessory antennas	SE
Adult uses	CU
Truck terminal or bus depot	SE
Any use of the same general character as any other use permitted in the I Industrial District and which use is not specifically provided for herein	SE

P = Permitted
SE = Special exception
CU = Conditional use

**All zoning information should be independently verified with governing municipality



ANDREW CARLINO

ACarlino@PillarRealEstateAdvisors.com
484-887-8202 | Ext. 103

ERIC KUHN

EKuhn@PillarRealEstateAdvisors.com
484-887-8202 | Ext. 101

ANDREW TURNER

ATurner@PillarRealEstateAdvisors.com
484-887-8202 | Ext. 102

"The information contained in this document has been obtained from sources believed reliable. While Pillar Real Estate Advisors, LLC does not doubt its accuracy, Pillar Real Estate Advisors, LLC. has not verified it and makes no guarantee, warranty or representation about it. It is your responsibility to independently confirm its accuracy and completeness. Any projections, opinions, assumptions or estimates used are for example only and do not represent the current or future performance of the property. The value of this transaction to you depends on several factors which should be evaluated by your tax, financial and legal advisors to determine to your satisfaction the suitability of the property for your needs.

Photos herein are the property of their respective owners and use of these images without the express written consent of the owner is prohibited."