

# OFFICE FOR SUBLEASE

2381 ROSECRANS AVENUE | EL SEGUNDO, CALIFORNIA 90245



## Property Highlights

- » Available: Suite 425 - ±1,620 Sq Ft

---

- » Rate \$3.00 / SF Full Service Gross

---

- » Term Negotiable

---

- » High Image, Double Door Lobby Identity

---

- » Reception, 3 Private Offices, Conference Room, Bullpen, and Shared Access to Kitchen & Multiple Conference Rooms

---

- » Fully Furnished Office Space

---

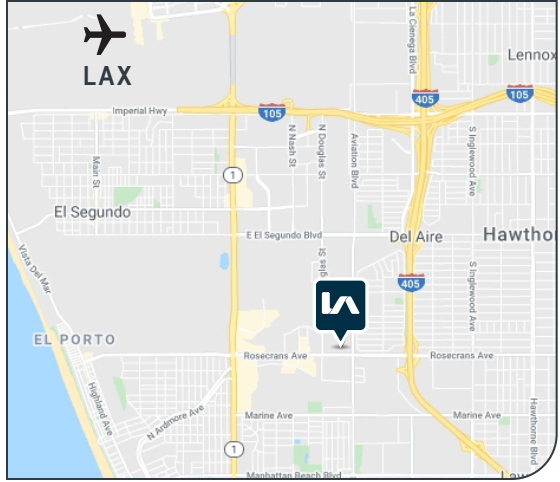
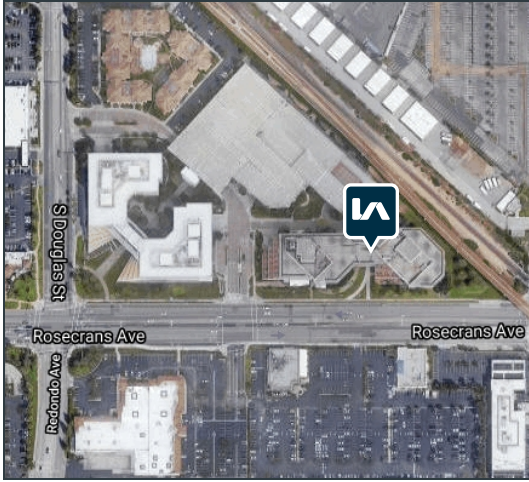
- » Ample Parking - 5 Stalls Available

---

- » Minutes Away From LAX and 405 Freeway

---

- » Call For More Information!



DISCLAIMER: The information contained herein has been obtained from the property owner or other third party and is provided to you without verification as to accuracy. We (Lee & Associates, its brokers, employees, agents, principals, officers, directors and affiliates) make no warranty or representation regarding the information, property, or transaction. You and your attorneys, advisors and consultants should conduct your own investigation of the property and transaction. 9.24.20

Local Expertise. International Reach. World Class.



**JESSE A. LAIKIN, SIOR**  
Principal | LIC ID#: 00781096

T : 310.965.1765  
E: jlaikin@leelalb.com

**BRANDON NEIBEL**  
Associate | LIC ID#: 02078405

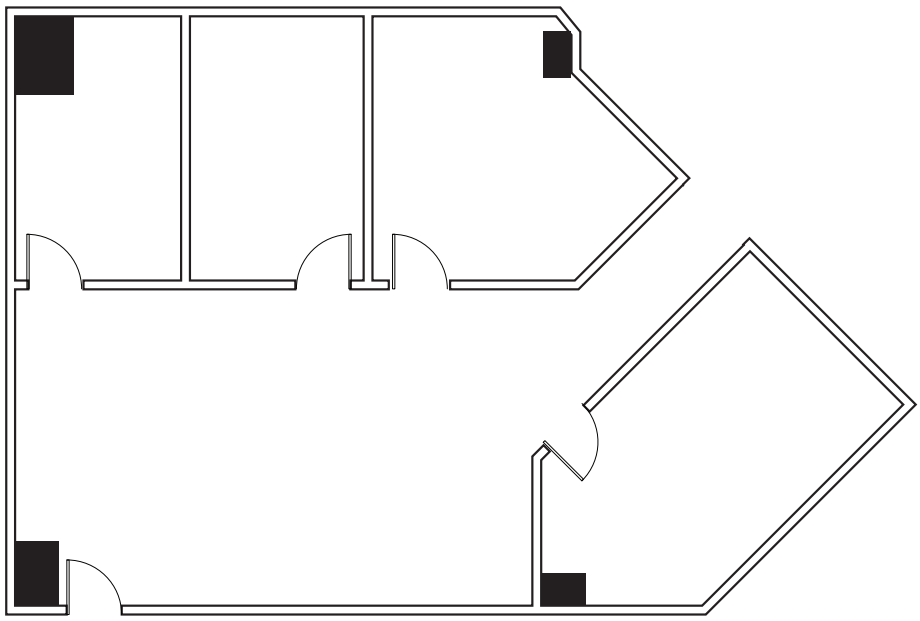
T : 310.965.1751  
E: bneibel@leelalb.com

# OFFICE FOR SUBLEASE

2381 ROSECRANS AVENUE | EL SEGUNDO, CALIFORNIA 90245



## Suite 425 - Floor Plan (Not To Scale)



DISCLAIMER: The information contained herein has been obtained from the property owner or other third party and is provided to you without verification as to accuracy. We (Lee & Associates, its brokers, employees, agents, principals, officers, directors and affiliates) make no warranty or representation regarding the information, property, or transaction. You and your attorneys, advisors and consultants should conduct your own investigation of the property and transaction. 9.24.20

Local Expertise. International Reach. World Class.



**JESSE A. LAIKIN, SIOR**  
Principal | LIC ID#: 00781096

T: : 310.965.1765  
E: jlaikin@leelalb.com

**BRANDON NEIBEL**  
Associate | LIC ID#: 02078405

T: : 310.965.1751  
E: bneibel@leelalb.com