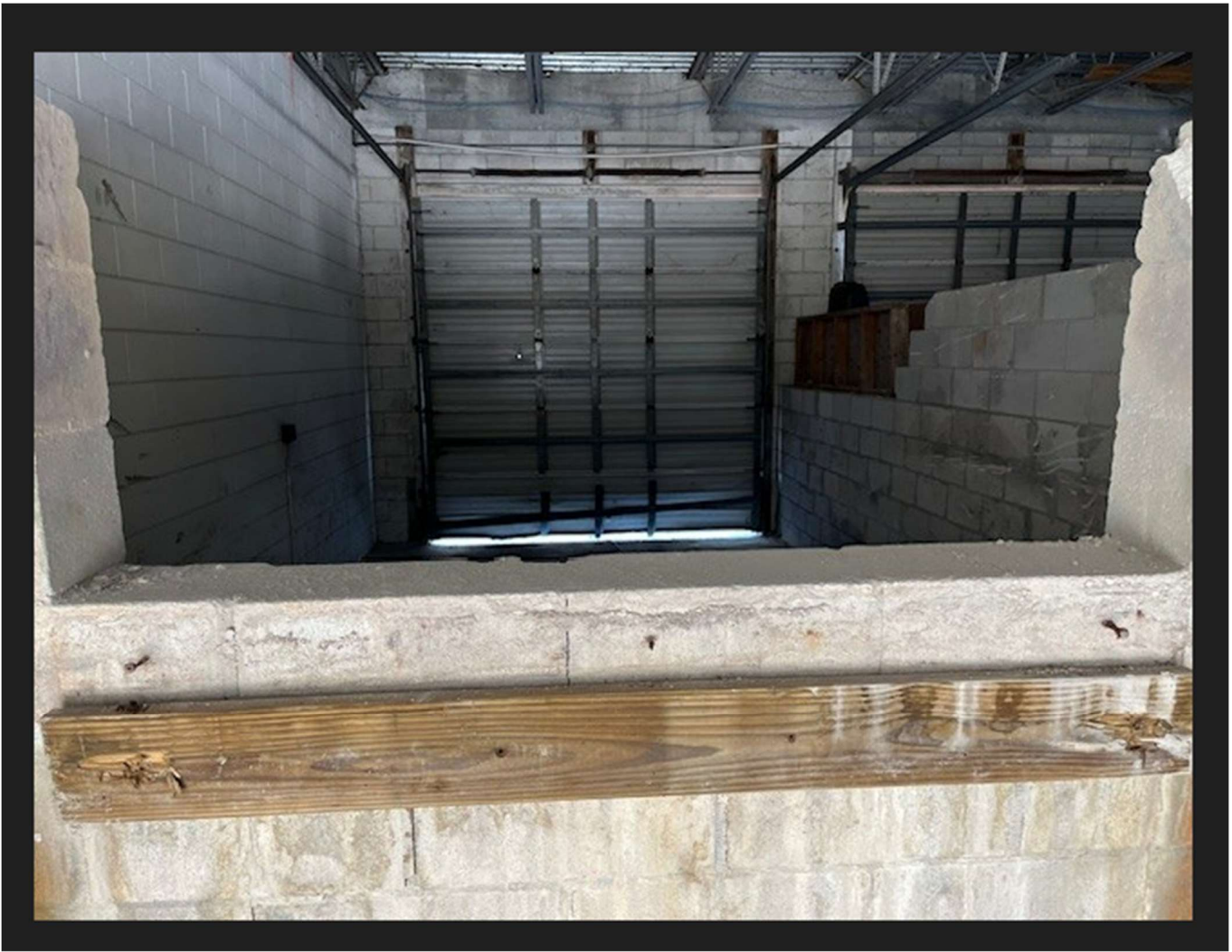




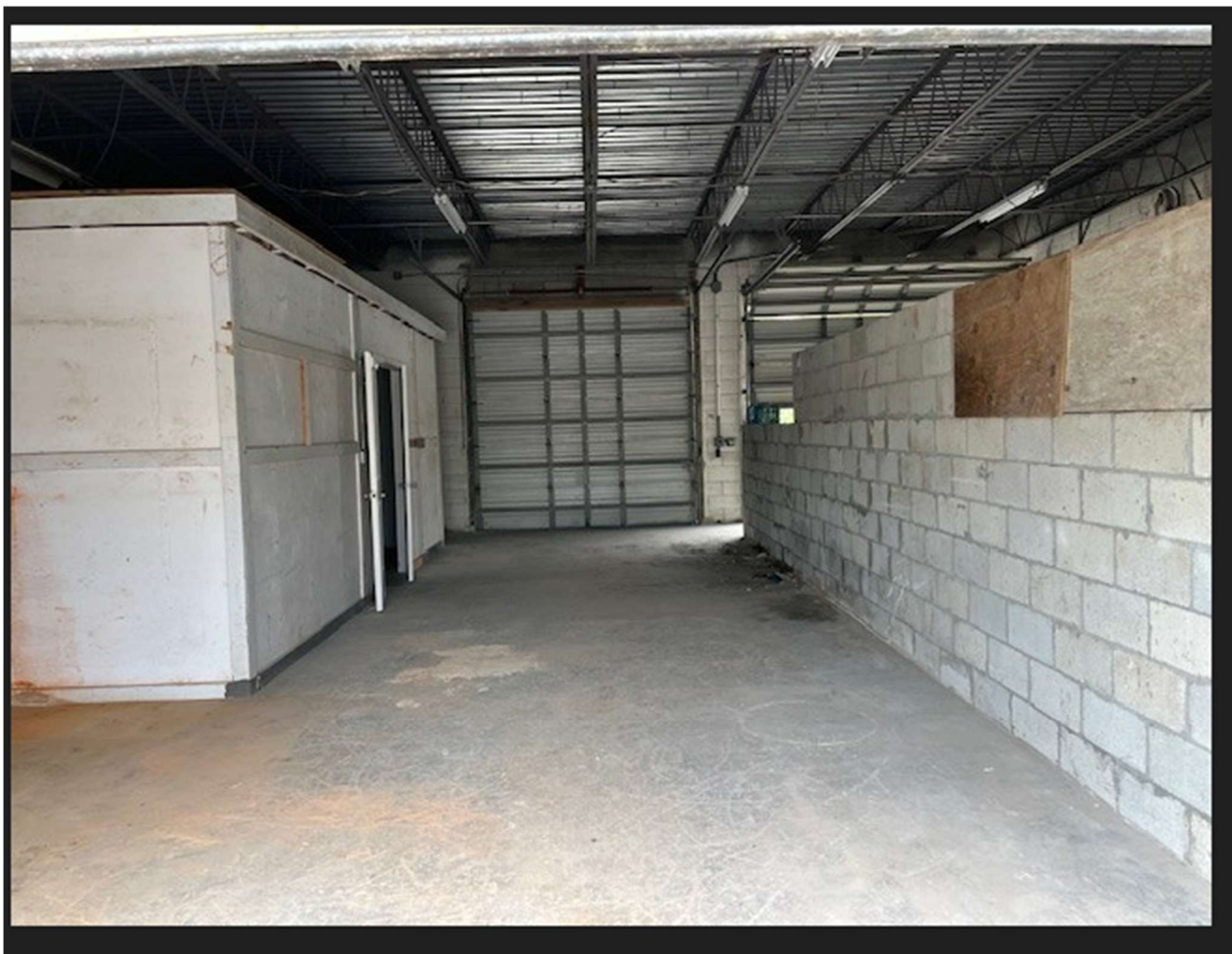
This is the South side of a divided section of the warehouse.

Approximately 12.2'w x 14' 10" l.



This is the North side section of the divided containment wall.

This section is approximately 12'x22' & is rented to Chris Kelly.



This is the East bay (#4). As you can see, a storage room (approximately 19.5'l x 13'w) extends into it, cutting down the width.  
(The right side of the picture is the 2 sections in the previous 2 pictures.)

This bay area is approximately 37.9'l x 12.2'w.

+++++

There is an additional "office area" attached to the storage room.  
It is approximately 8.5'w x 12.5'l.

***This room has the modem for our cameras so we would need access anytime cameras are out.***