



HAMILTON
REAL ESTATE GROUP

55th Street



18th Avenue

PRIME DEVELOPMENT LOTS FOR SALE

IN NORTHWEST ROCHESTER, MN

Property Description:

- Be a part of the fastest growing area in Rochester!
- Key retail, commercial, multifamily lots available.
- Lots will be shovel ready for your project fall of 2024.
- Don't miss the opportunity to join this amazing development!

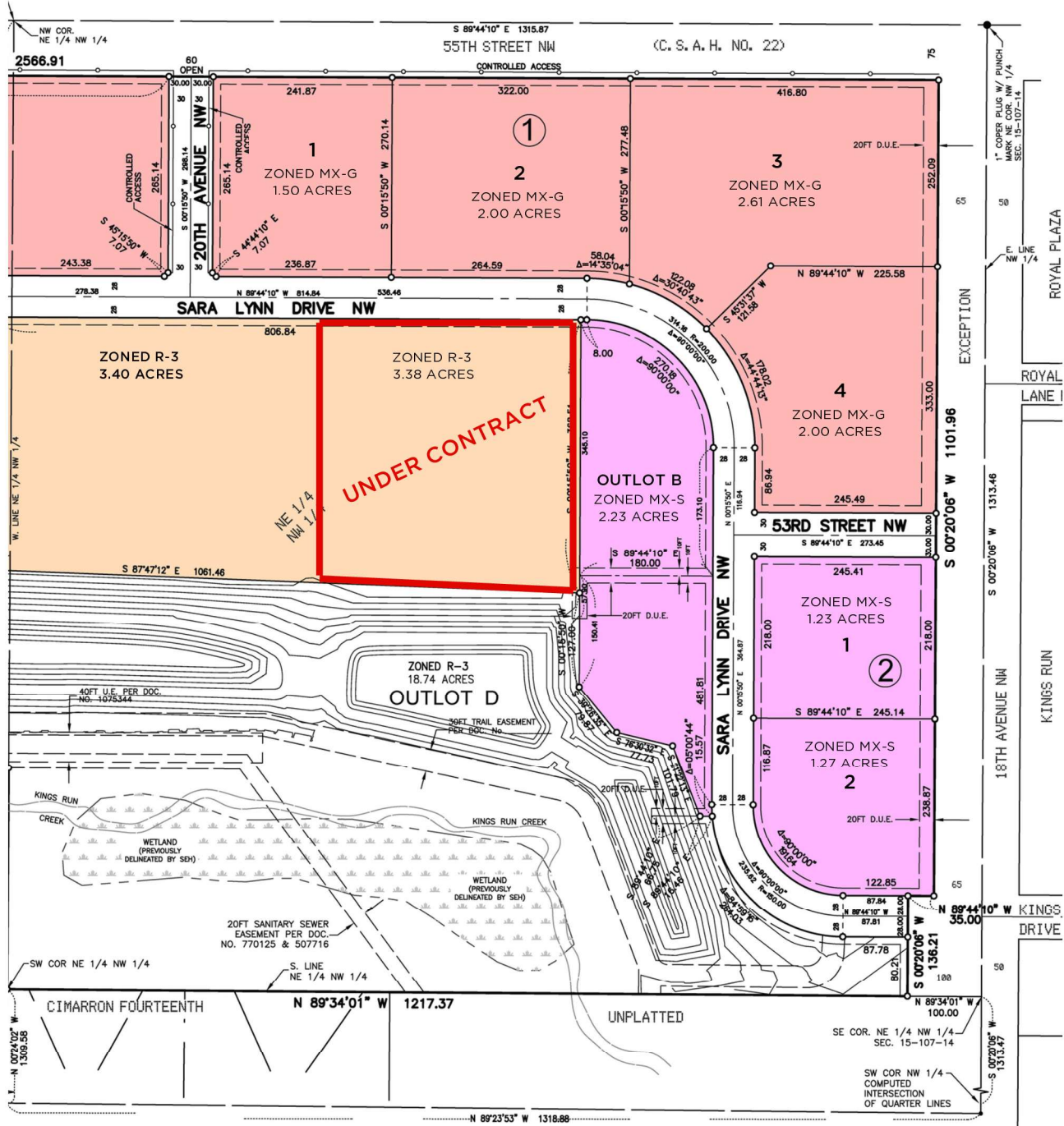
**PRICE:
CALL FOR PRICING**

FOR MORE INFORMATION:

[VISIT OUR WEBSITE](#)

CONTACT

Ryan Nolander | Principal
ryan@hamiltonmnre.com
O: 507-281-1002 ext 111 | M: 507-383-1820
www.hamiltonmnre.com

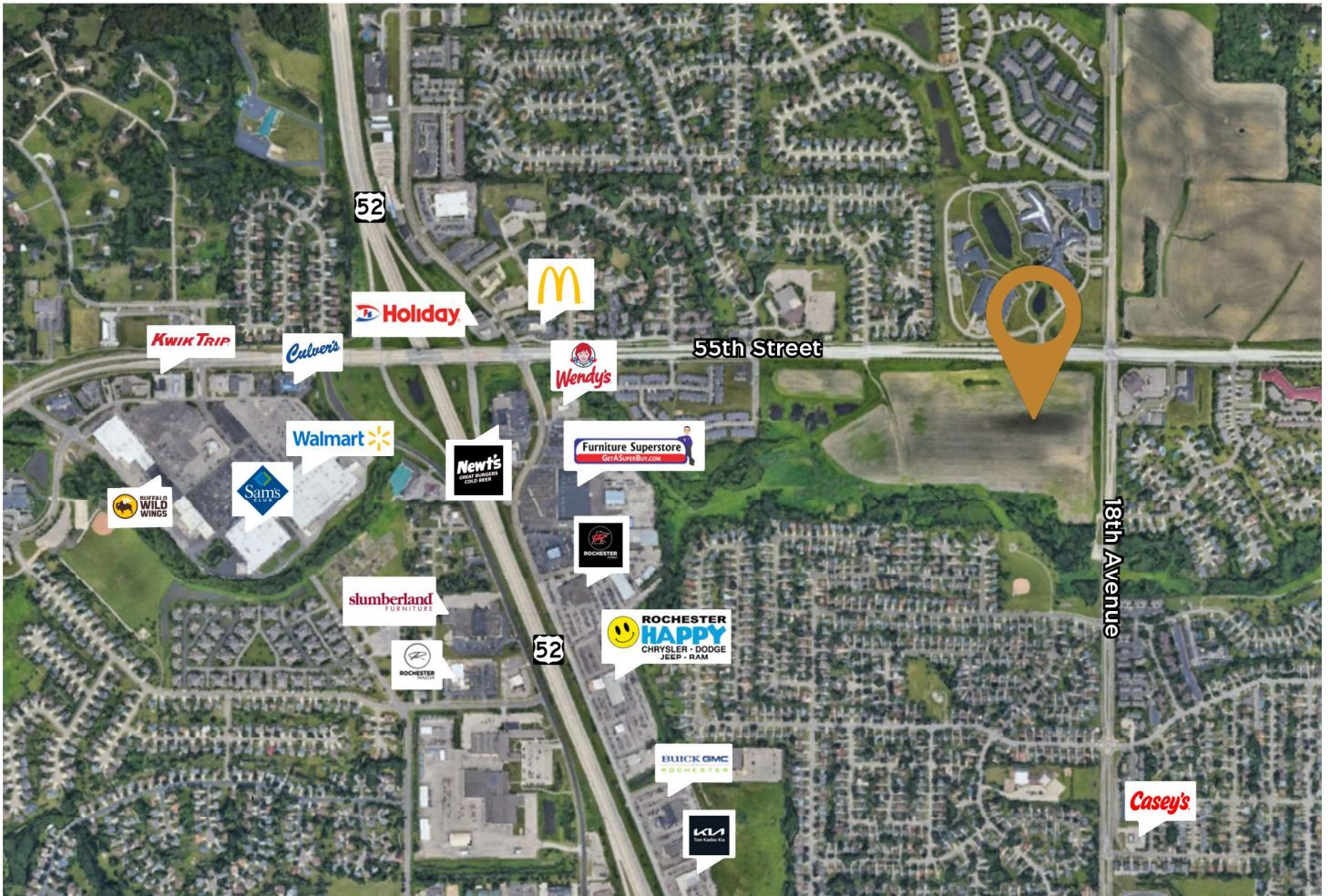


ZONING LEGEND

- MX-G - Mid to high-intensity commercial
- R-3 - Multifamily residential
- MX-S - Low to mid-intensity commercial

CONTACT

Ryan Nolander | Principal
 ryan@hamiltonmre.com
 O: 507-281-1002 ext 111 | M: 507-383-1820
 www.hamiltonmre.com



Traffic Counts:
55th Street - 18,200 CPD
HWY 52 - 52,227 CPD

CONTACT

Ryan Nolander | Principal
ryan@hamiltonmre.com
O: 507-281-1002 ext 111 | M: 507-383-1820
www.hamiltonmre.com