



Keegan & Coppin
COMPANY, INC.

SALE/LEASE

13400 HIGHWAY 101
HOPLAND, CA

HOPLAND MARKET & POST OFFICE SITE



Go beyond broker.

PRESENTED BY:

MARSHALL KELLY, BROKER ASSOCIATE
LIC # 00801883 (707) 528-1400, EXT 277
MKELLY@KEEGANCOPPIN.COM



CONTENTS



13400 S HIGHWAY 101
HOPLAND, CA

**HOPLAND MARKET
& POST OFFICE SITE
FOR SALE OR LEASE**

EXECUTIVE SUMMARY 3

PROPERTY DESCRIPTION 4

FINANCIAL OVERVIEW

 INCOME & EXPENSES 5

PROPERTY PHOTOS 6-7

AREA DESCRIPTION 8

AERIAL MAP 9

MARKET SUMMARY 10

ABOUT KEEGAN & COPPIN 11

DISCLAIMER 12



EXECUTIVE SUMMARY

This is a totally remodeled building for a combined convenience market with an adjacent post office.

- Newly renovated building
- New electric
- New plumbing
- Down from Hopland Taproom
- Excellent street visibility
- High traffic counts

LEASE TERMS

Total RSF: 6,800+/-

- Market: 6,000+/- SF
- Post Office: 797+/- SF

Lease Rate

Negotiable

SALE OFFERING

Sale Price **\$2,350,000**
 Price PSF **\$345+/-**
 Annual NOI **\$149,017**
 Cap Rate **6.34%**

DEMOGRAPHICS

	1 MILE	3 MILES	5 MILES
Est. Avg. HH Income	\$83,859	\$86,417	\$93,233



13400 S HIGHWAY 101
HOPLAND, CA

**HOPLAND MARKET
& POST OFFICE SITE
FOR SALE OR LEASE**



PRESENTED BY:

MARSHALL KELLY, BROKER ASSOCIATE
KEEGAN & COPPIN CO., INC.
LIC # 00801883 (707) 528-1400, EXT 277
MKELLY@KEEGANCOPPIN.COM

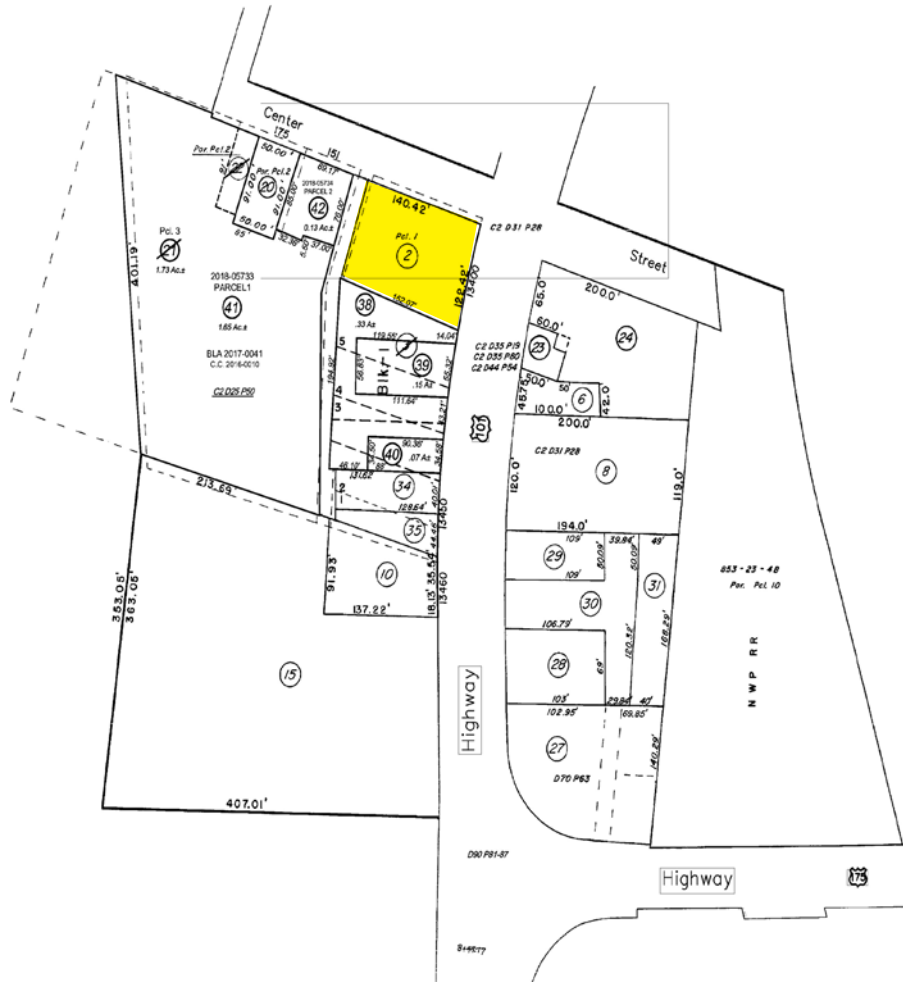


PROPERTY DESCRIPTION



13400 S HIGHWAY 101
HOPLAND, CA

**HOPLAND MARKET
& POST OFFICE SITE
FOR SALE OR LEASE**



BUILDING SIZE/LEASE SPACE

6,800+/- SF

Market: 6,000+/- SF

Post Office: 797+/- SF

LOT SIZE

0.35+/- Acres

APN

048-300-0200

TOTAL BUILDING S.F.

6,800+/- SF

STORIES

1

PARKING

Side of building and street side

TRAFFIC

Triple counts

Average daily count 30,700+/-

PRESENTED BY:

MARSHALL KELLY, BROKER ASSOCIATE
KEEGAN & COPPIN CO., INC.
LIC # 00801883 (707) 528-1400, EXT 277
MKELLY@KEEGANCOPPIN.COM



FINANCIAL OVERVIEW: INCOME AND EXPENSES



13400 S HIGHWAY 101
HOPLAND, CA

**HOPLAND MARKET
& POST OFFICE SITE
FOR SALE OR LEASE**

PROJECTED INCOME SUMMARY		EXPENSE SUMMARY ESTIMATE		FINANCIAL SUMMARY	
Projected Gross Income	\$153,625	Property Taxes	\$29,375	Sales Price	\$2,350,000
Expense Reimbursements	\$29,375	Insurance	Tenant Pays	Cap Rate	6.34%
Adjusted Gross Income	\$183,000	Water / Sewer	Tenant Pays	possible down payment (35%)	\$822,500
Less Vacancy 3%	\$4,608	Utilities	Tenant Pays	loan amount (65%)	\$1,527,500
Less Expenses	\$29,375	Garbage	Tenant Pays	Net operating Income	\$149,017
Net Operating Income	\$149,017			Debt Service	\$129,552
				Cash Flow	\$19,465
				Cash on Cash	2.34%
*Projected market rent @ \$1.80 psf / \$129,600 annually includes all FF&E. Post office rental rate at \$1.99 psf / \$24,375 annual.				*Loan assumption: 25 year fully amortized at 7%	
		Total Expenses	\$29,375		

PRESENTED BY:

MARSHALL KELLY, BROKER ASSOCIATE
KEEGAN & COPPIN CO., INC.
 LIC # 00801883 (707) 528-1400, EXT 277
 MKELLY@KEEGANCOPPIN.COM

Keegan & Coppin Company, Inc.

The above information, while not guaranteed, has been secured from sources we believe to be reliable. Submitted subject to error, change or withdrawal. An interested party should verify the status of the property and the information herein.



PROPERTY PHOTOS



13400 S HIGHWAY 101
HOPLAND, CA

**HOPLAND MARKET
& POST OFFICE SITE
FOR SALE OR LEASE**



PRESENTED BY: MARSHALL KELLY, BROKER ASSOCIATE
KEEGAN & COPPIN CO., INC.
LIC # 00801883 (707) 528-1400, EXT 277
MKELLY@KEEGANCOPPIN.COM



PROPERTY PHOTOS



13400 S HIGHWAY 101
HOPLAND, CA

**HOPLAND MARKET
& POST OFFICE SITE
FOR SALE OR LEASE**



PRESENTED BY: MARSHALL KELLY, BROKER ASSOCIATE
KEEGAN & COPPIN CO., INC.
LIC # 00801883 (707) 528-1400, EXT 277
MKELLY@KEEGANCOPPIN.COM



AREA DESCRIPTION



13400 S HIGHWAY 101
HOPLAND, CA

**HOPLAND MARKET
& POST OFFICE SITE
FOR SALE OR LEASE**

DESCRIPTION OF AREA

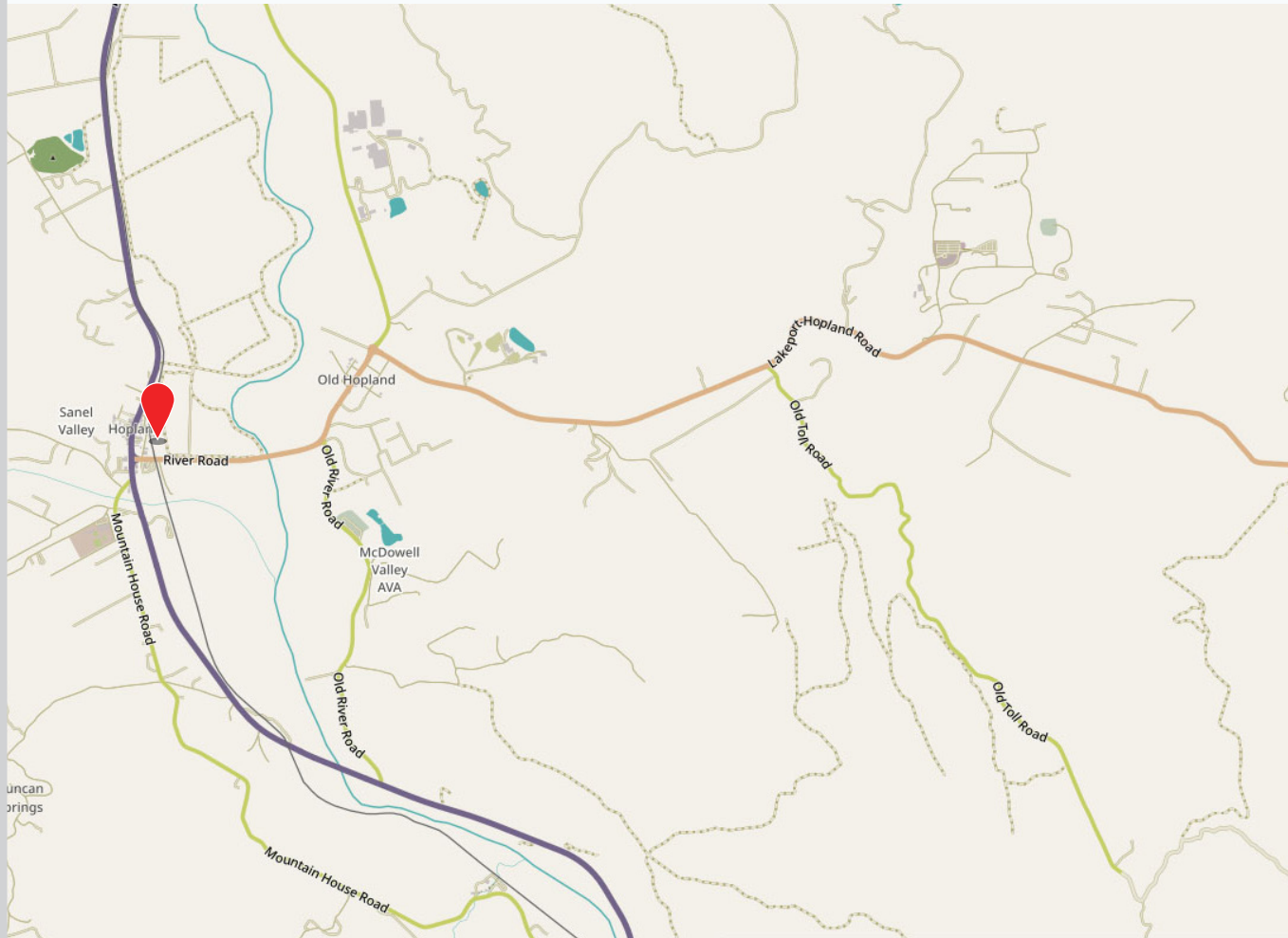
Hopland is a great spot if you're looking to enjoy a laid-back atmosphere with plenty of opportunities to experience local flavors and natural beauty.

NEARBY AMENITIES

- The area is home to several wineries and tasting rooms and Hopland Taproom, a local favorite for craft beers and a relaxed atmosphere.
- Mendocino County Museum
- Russian River
- Lake Mendocino

TRANSPORTATION ACCESS

- Conveniently off Highway 101



PRESENTED BY: MARSHALL KELLY, BROKER ASSOCIATE
 KEEGAN & COPPIN CO., INC.
 LIC # 00801883 (707) 528-1400, EXT 277
 MKELLY@KEEGANCOPPIN.COM



AERIAL MAP



13400 S HIGHWAY 101
HOPLAND, CA

**HOPLAND MARKET
& POST OFFICE SITE
FOR SALE OR LEASE**



PRESENTED BY: MARSHALL KELLY, BROKER ASSOCIATE
KEEGAN & COPPIN CO., INC.
LIC # 00801883 (707) 528-1400, EXT 277
MKELLY@KEEGANCOPPIN.COM

The above information, while not guaranteed, has been secured from sources we believe to be reliable. Submitted subject to error, change or withdrawal. An interested party should verify the status of the property and the information herein.

Map created using ArcGIS® software by Esri. ArcGIS® is the intellectual property of Esri and is used herein under license. Copyright © Esri.



MARKET SUMMARY



13400 S HIGHWAY 101
HOPLAND, CA

**HOPLAND MARKET
& POST OFFICE SITE
FOR SALE OR LEASE**

HOPLAND, CA

Hopland, California, nestled in Mendocino County, is a delightful small town celebrated for its picturesque landscapes and vibrant local culture. It's the perfect destination if you're seeking a relaxed vibe with ample opportunities to savor local flavors and immerse yourself in natural beauty.

The region boasts several excellent wineries and tasting rooms. Don't miss Jeriko Estate for some of the finest local wines. For craft beer enthusiasts, Hopland Taproom offers a welcoming atmosphere and a great selection of brews. The town also hosts annual events such as wine festivals, farmers' markets, and community gatherings.

Just a short drive away, the Mendocino County Museum in Willits provides a fascinating glimpse into the area's history, with exhibits on Native American heritage and early settler life.

For outdoor enthusiasts, the Russian River is perfect for fishing, kayaking, or enjoying a peaceful picnic. Lake Mendocino, with its stunning views, offers excellent opportunities for boating, fishing, and hiking.

Stroll through downtown Hopland to discover charming shops with unique gifts and local products. Dining options range from cozy cafes to restaurants serving delicious farm-to-table cuisine.

MENDOCINO COUNTY

Mendocino County is situated on the northern coast of California, along the Pacific Ocean. It is part of the North Coast region and is known for its rugged coastline, redwood forests, and diverse landscapes. The county seat is the city of Ukiah. The county encompasses a wide range of geographical features, including coastal cliffs, redwood forests, rolling hills, and vineyard-covered valleys.

The economy of Mendocino County is diverse. Agriculture, including wine production, timber, and tourism, plays a significant role. The region is known for its wine industry, and there are numerous vineyards and wineries producing high-quality wines.

Mendocino County is a popular destination for tourists seeking natural beauty and outdoor activities. Visitors are drawn to the coastal scenery, state parks, and recreational opportunities. There is also a vibrant arts community, with numerous galleries, art festivals, and cultural events. Various events and festivals take place throughout the year, celebrating the local culture, food, and art.

PRESENTED BY:

**MARSHALL KELLY, BROKER ASSOCIATE
KEEGAN & COPPIN CO., INC.
LIC # 00801883 (707) 528-1400, EXT 277
MKELLY@KEEGANCOPPIN.COM**

Keegan & Coppin Company, Inc.

The above information, while not guaranteed, has been secured from sources we believe to be reliable. Submitted subject to error, change or withdrawal. An interested party should verify the status of the property and the information herein.



ABOUT KEEGAN & COPPIN



13400 S HIGHWAY 101
HOPLAND, CA

**HOPLAND MARKET
& POST OFFICE SITE
FOR SALE OR LEASE**



Your partner in commercial real estate in the North Bay & beyond since 1976.

Keegan & Coppin Company, Inc. has served our communities in the North Bay for well over 40 years. But our unmatched local experience is only part of what makes us the area's most trusted name in commercial real estate. At Keegan & Coppin, we bring together a range of services that go beyond traditional brokerage. That depth of knowledge and diverse skillset allows us to clarify and streamline all aspects of your transaction, giving you the confidence of knowing that we can help with anything that comes up through all phases of a project.

Keegan & Coppin Company, Inc.

The above information, while not guaranteed, has been secured from sources we believe to be reliable. Submitted subject to error, change or withdrawal. An interested party should verify the status of the property and the information herein.



DISCLAIMER



13400 S HIGHWAY 101
HOPLAND, CA

**HOPLAND MARKET
& POST OFFICE SITE
FOR SALE OR LEASE**

DISCLAIMER

This property is being offered on an as-is basis. While the Broker believes the information in this brochure to be accurate, no warranty or representation is made as to its accuracy or completeness. Interested parties should conduct independent investigations and reach conclusions without reliance on materials contained in this brochure.

This property owner requests that you do not disturb the Tenants, as the property will only be shown in coordination with the Listing Agent.

This brochure is presented under the terms and conditions of the Confidentiality Agreement. As such, the material contained in this brochure is confidential and is provided solely for the purpose of considering the purchase of the property described herein. Offers should be presented to the agent for the property owner. Prospective buyers are encouraged to provide buyer's background, source of funds and any other information that would indicate their ability to complete the transaction smoothly.

Keegan & Coppin Co., Inc.
1355 N Dutton Ave.
Santa Rosa, CA 95401
www.keegancoppin.com
(707) 528-1400

The above information, while not guaranteed, has been secured from sources we believe to be reliable. Submitted subject to error, change or withdrawal. An interested party should verify the status of the property and the information herein.

PRESENTED BY:

MARSHALL KELLY, BROKER ASSOCIATE
LIC # 00801883 (707) 528-1400, EXT 277
MKELLY@KEEGANCOPPIN.COM